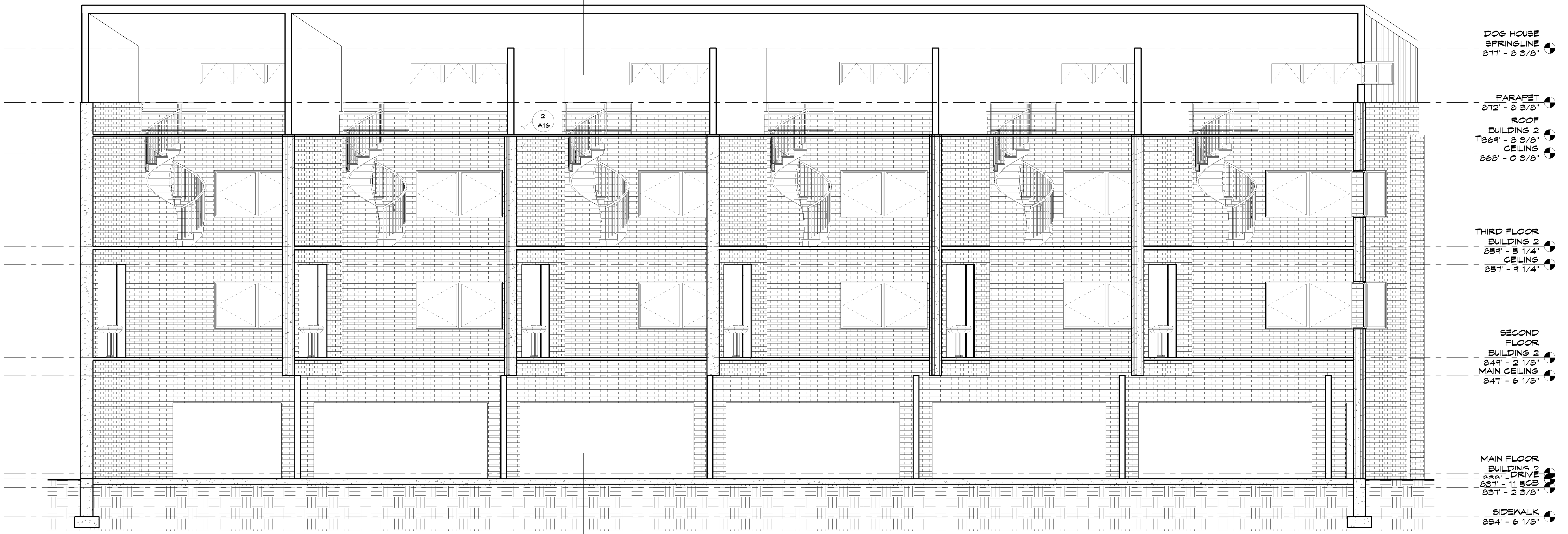
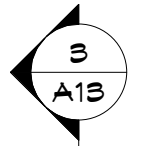


- DOG HOUSE SPRINGLINE 877' - 8 3/8"
- PARAPET 872' - 8 3/8"
- ROOF BUILDING 2 869' - 8 3/8"
- THIRD FLOOR CEILING 868' - 0 3/8"
- THIRD FLOOR BUILDING 2 859' - 5 1/4"
- SECOND FLOOR CEILING 857' - 9 1/4"
- SECOND FLOOR BUILDING 2 849' - 2 1/8"
- MAIN CEILING 847' - 6 1/8"
- MAIN FLOOR BUILDING 2 838' - 6 1/8"
- SARAGE 838' - 0 1/8"
- SIDEWALK 834' - 6 1/8"

1 BUILDING SECTION-BLDG3  
 1/4" = 1'-0"



- DOG HOUSE SPRINGLINE 877' - 8 3/8"
- PARAPET 872' - 8 3/8"
- ROOF BUILDING 2 869' - 8 3/8"
- THIRD FLOOR CEILING 868' - 0 3/8"
- THIRD FLOOR BUILDING 2 859' - 5 1/4"
- SECOND FLOOR CEILING 857' - 9 1/4"
- SECOND FLOOR BUILDING 2 849' - 2 1/8"
- MAIN CEILING 847' - 6 1/8"
- MAIN FLOOR BUILDING 2 838' - 6 1/8"
- DRIVE 837' - 11 5/8"
- SIDEWALK 834' - 6 1/8"

2 BUILDING SECTION AT DOGHOUSE-BLDG2  
 1/4" = 1'-0"