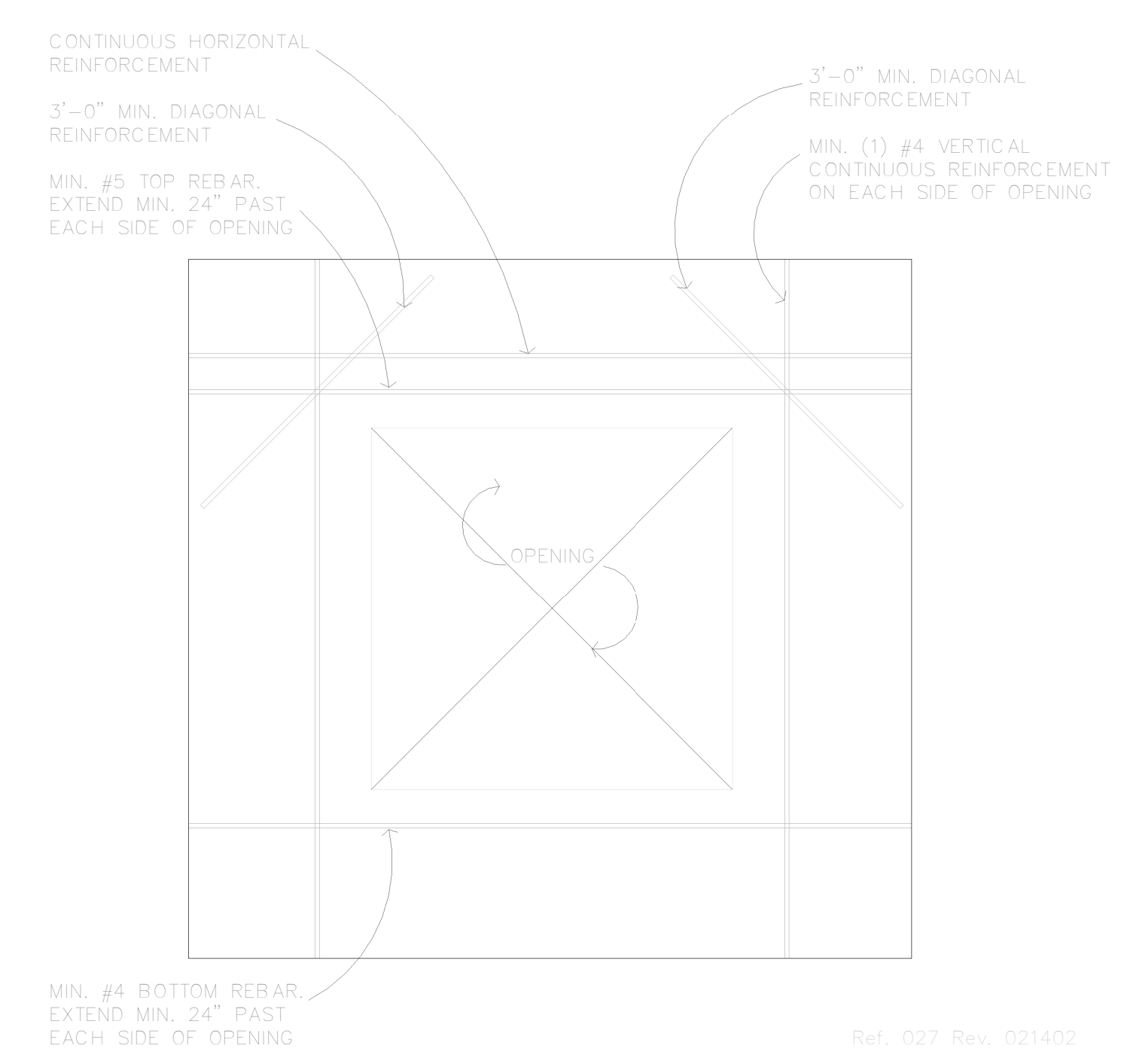
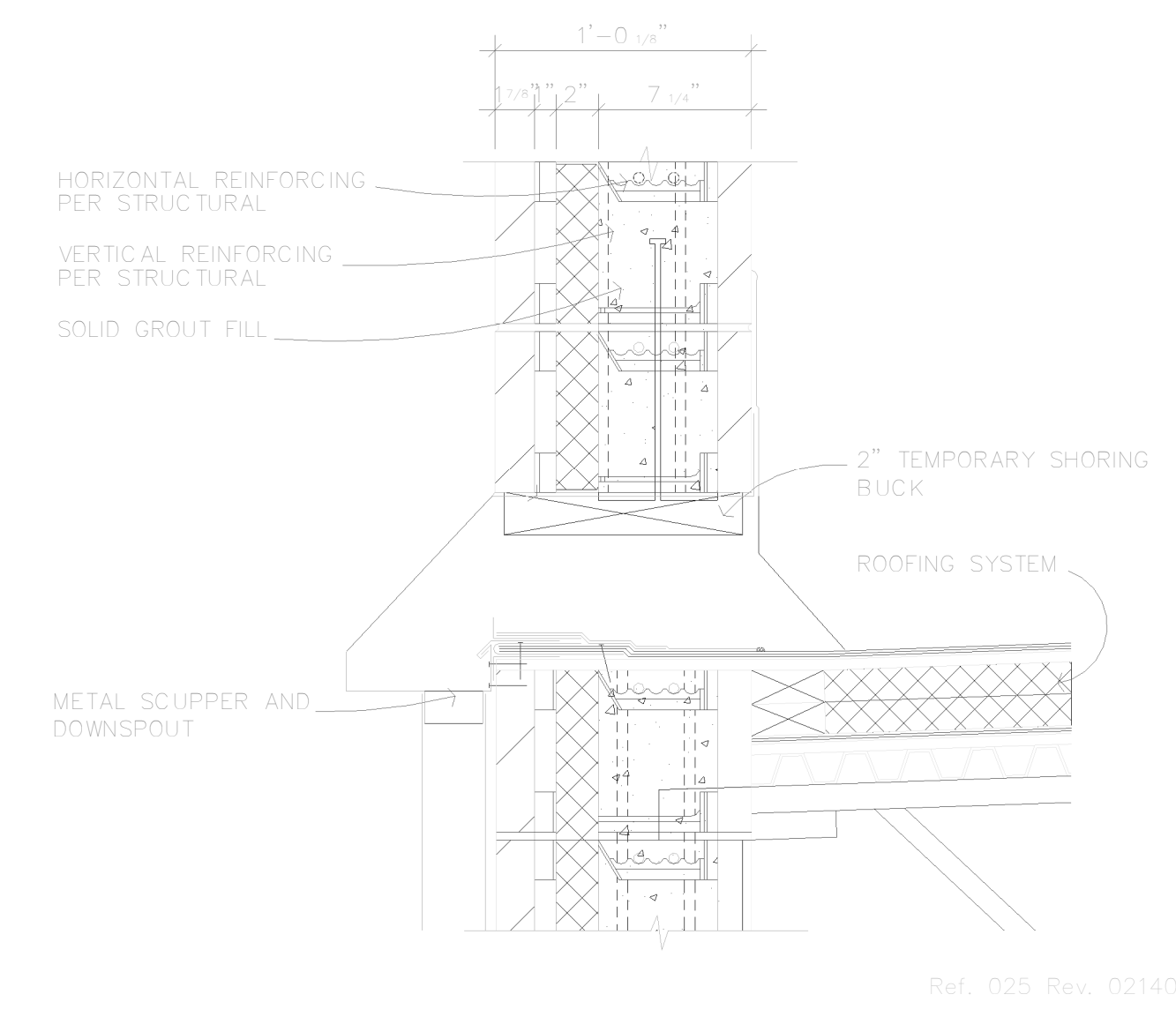


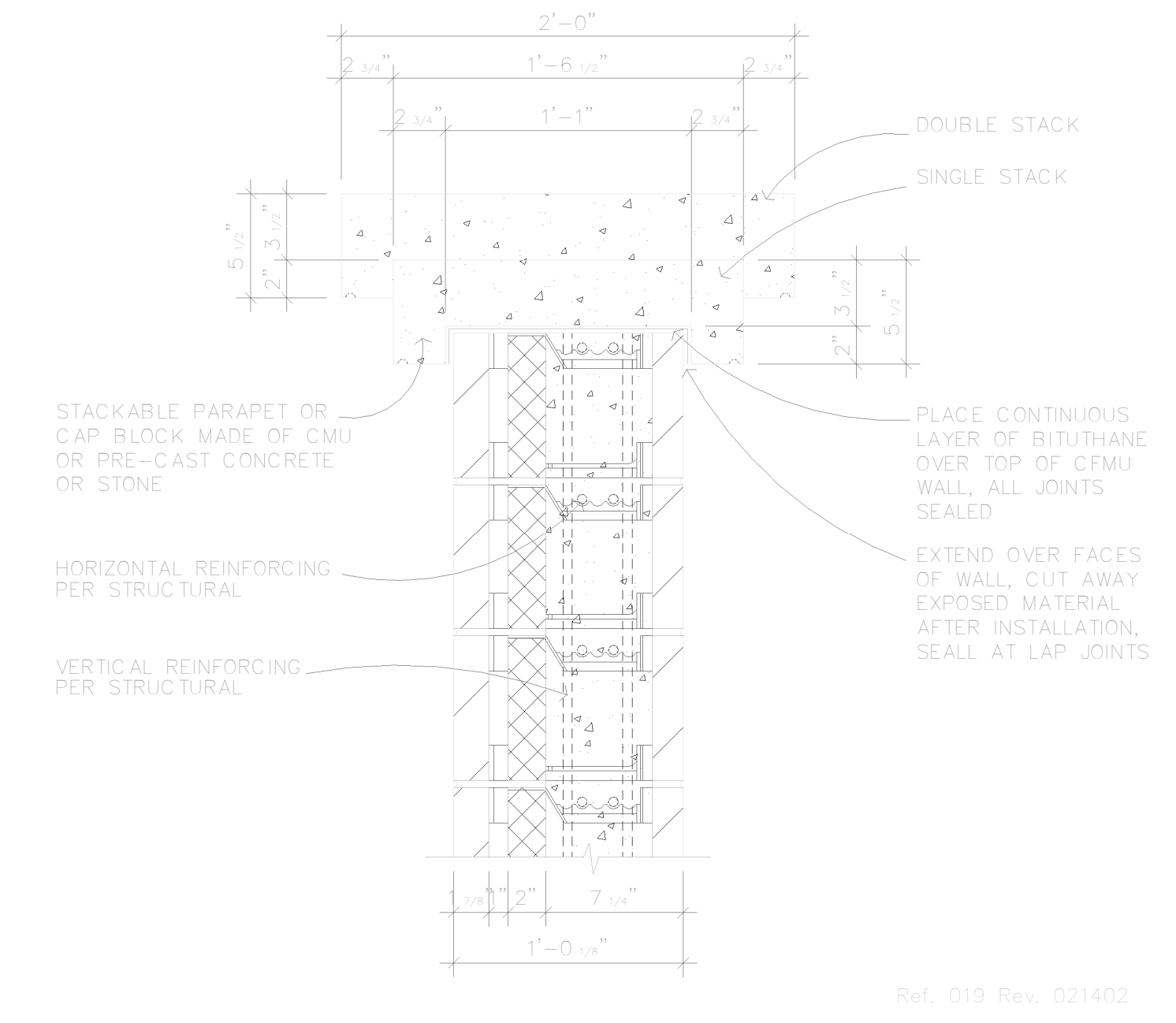
1 FLASHING DETAIL
 A15 3'-0" = 1'-0"



2 REINFORCING AT OPENINGS
 A15 3/4" = 1'-0"

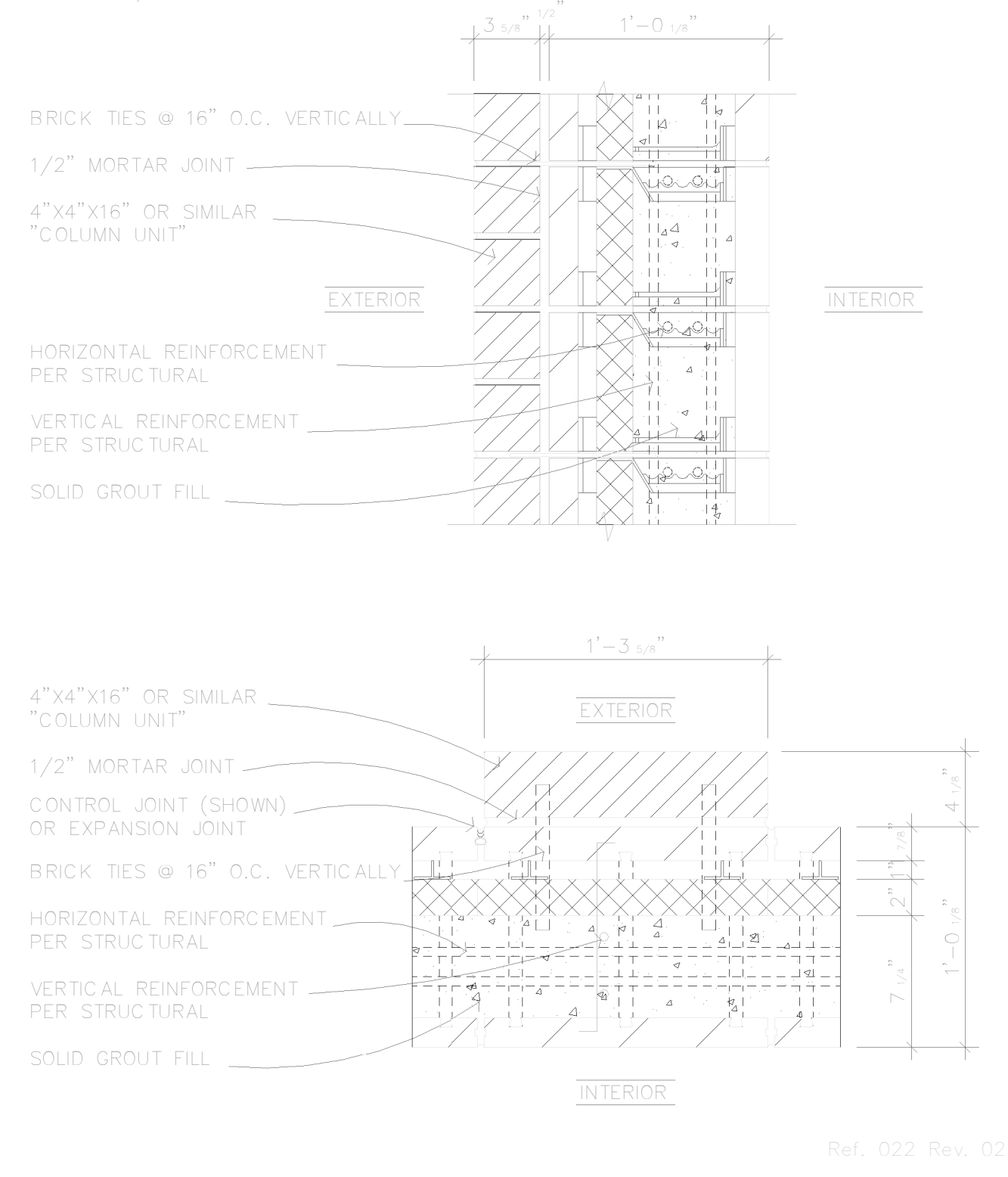


3 SCUPPER & DOWNSPOUT DETAIL
 A15 1 1/2" = 1'-0"

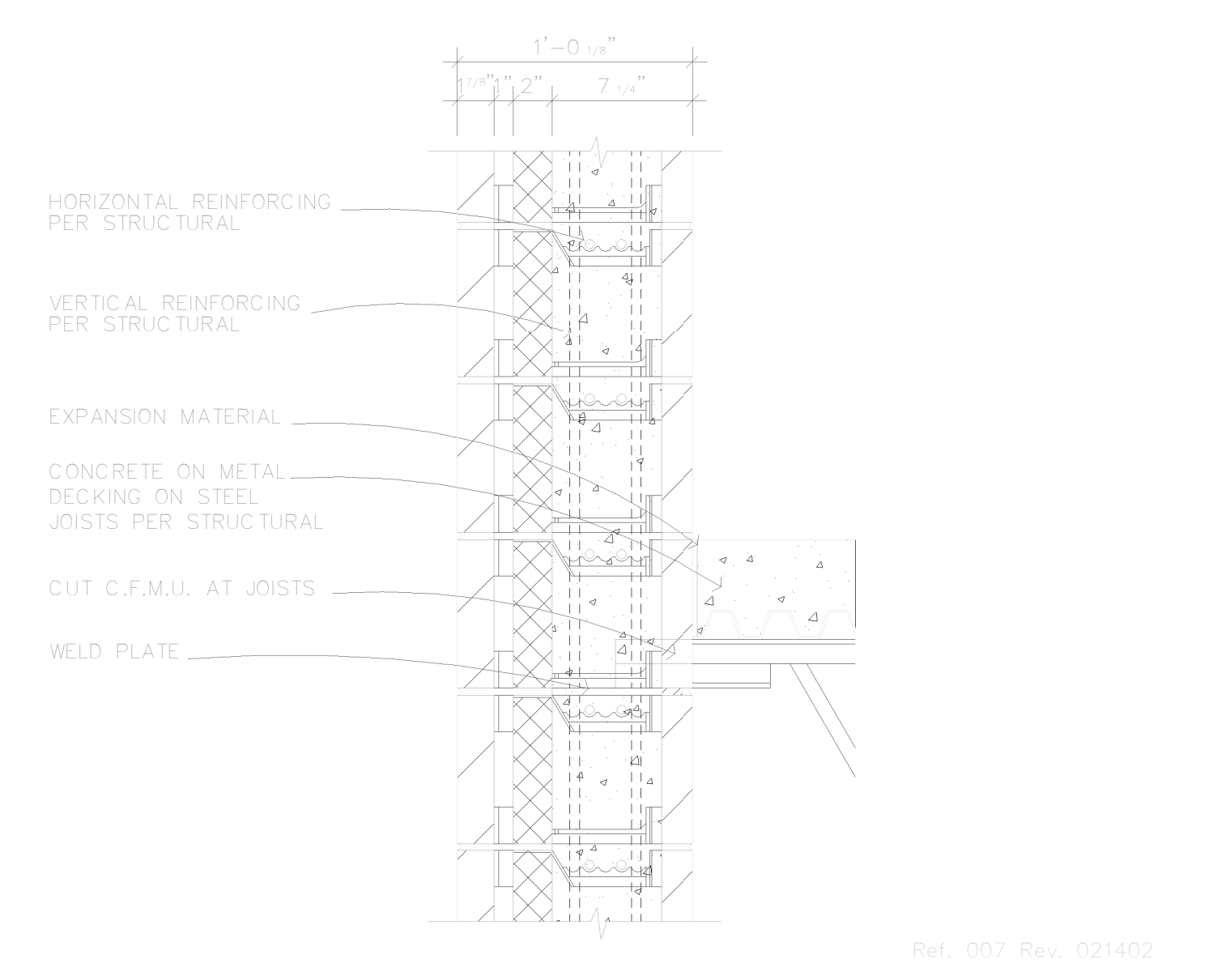


4 STACKABLE PARAPET DETAIL
 A15 1 1/2" = 1'-0"

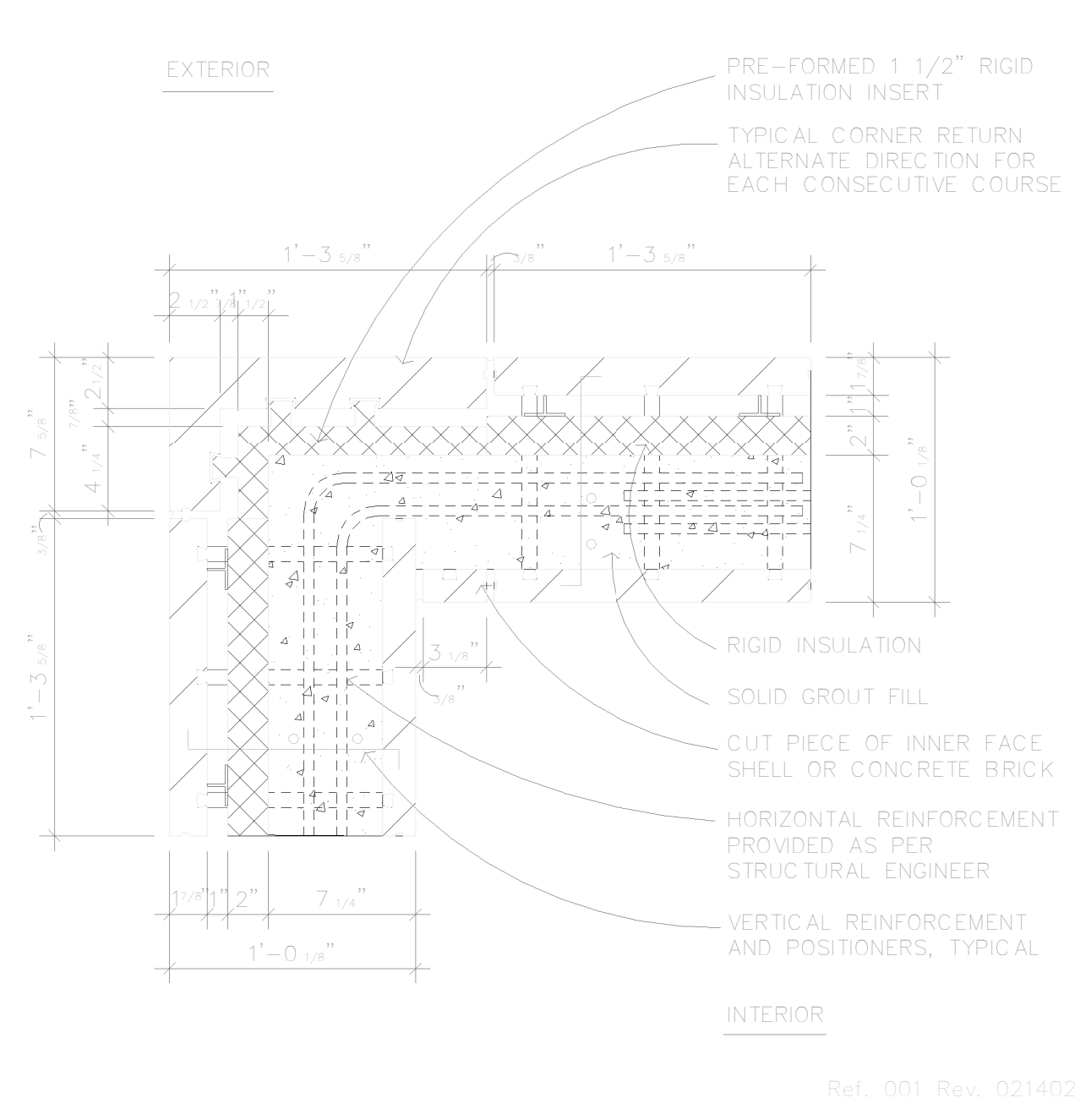
NOTE:
 "FALSE COLUMNS" ARE VENEER UNITS LAYED UP AS COLUMNS AGAINST THE CFMU WALL. THESE ARE FOR AESTHETICS ONLY AND ARE NOT STRUCTURAL AND ARE THEREFORE BOUND TO THE CFMU WALL WITH COMMON BRICK TIES AND MORTAR. "FALSE COLUMNS" ARE MORE COMMON AS EXTERIOR ENHANCEMENTS, BUT CAN BE USED ON THE INTERIOR AS WELL. THEY CAN ALSO BE USED TO HIDE TRANSITIONAL CHANGES IN THE WALL COLOR OR TEXTURE AND CAN ALSO EFFECTIVELY CONCEAL CONTROL JOINTS. UNITS USED AS "FALSE COLUMNS" CAN BE BRICK, BLOCK OR STONE AND CAN BE LAYED IN A VARIETY OF LENGTHS AND WIDTHS.



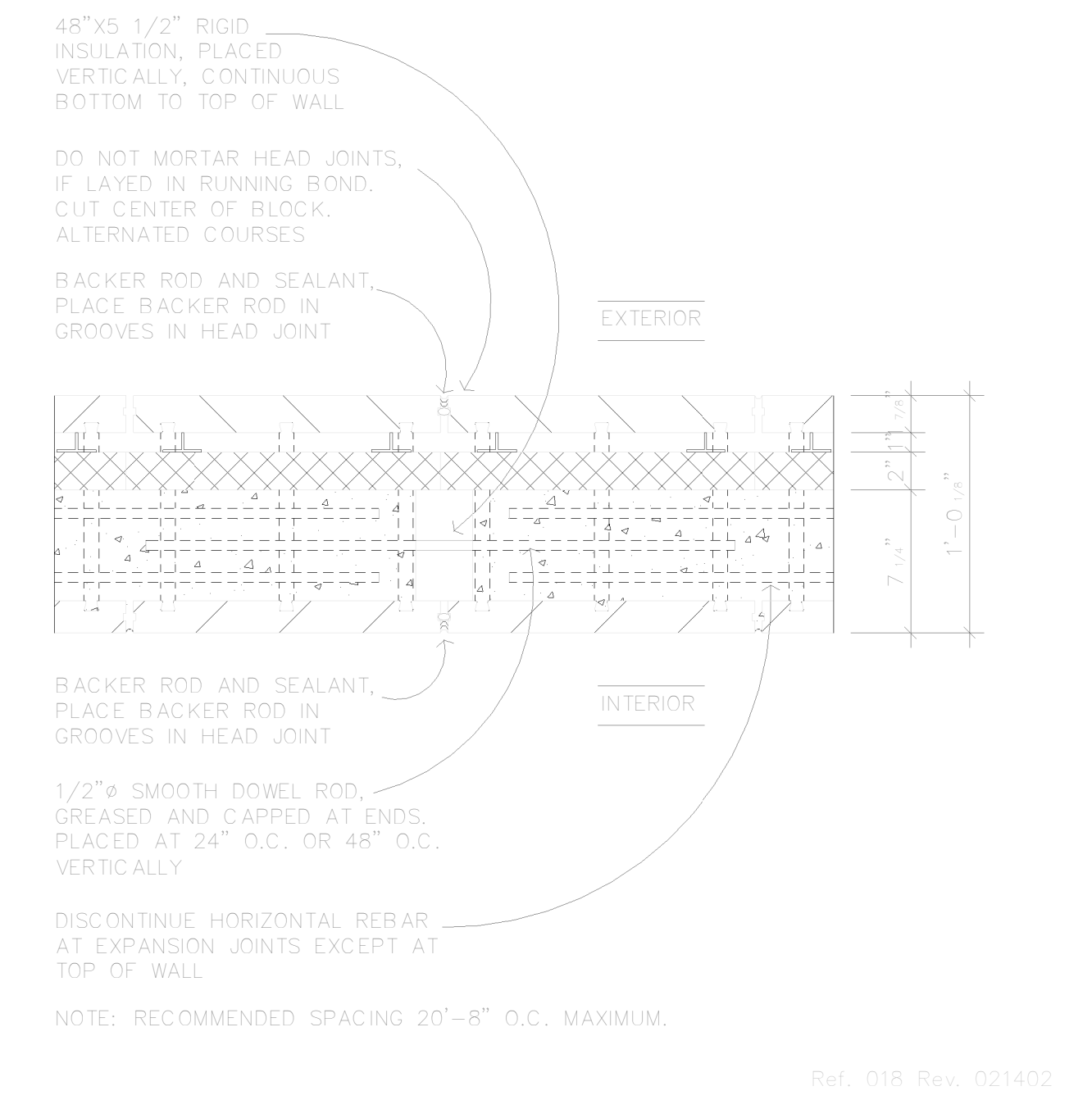
5 CFMU "FALSE" COLUMN DETAIL
 A15 1 1/2" = 1'-0"



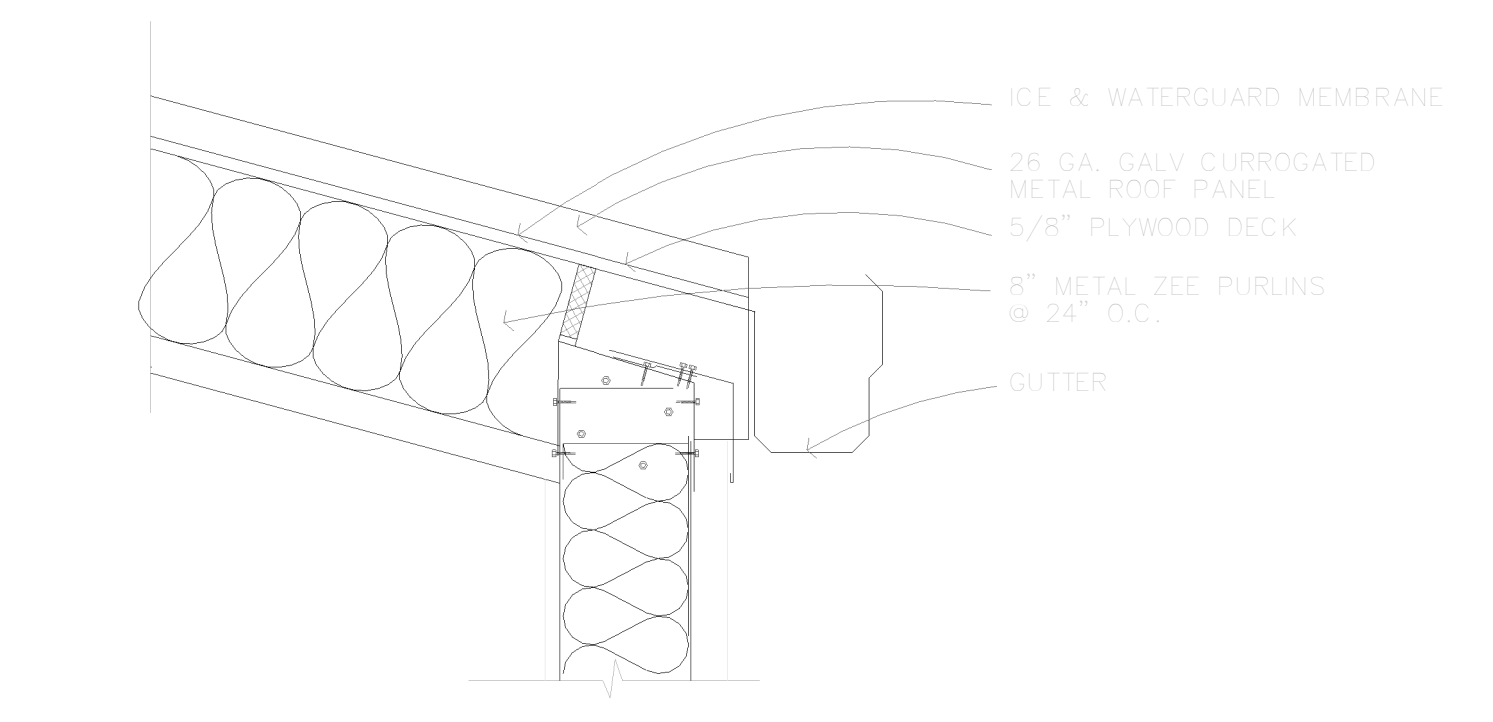
6 INTERMEDIATE FLOOR OR ROOF DECK CONNECTION - STEEL JOIST
 A15 1 1/2" = 1'-0"



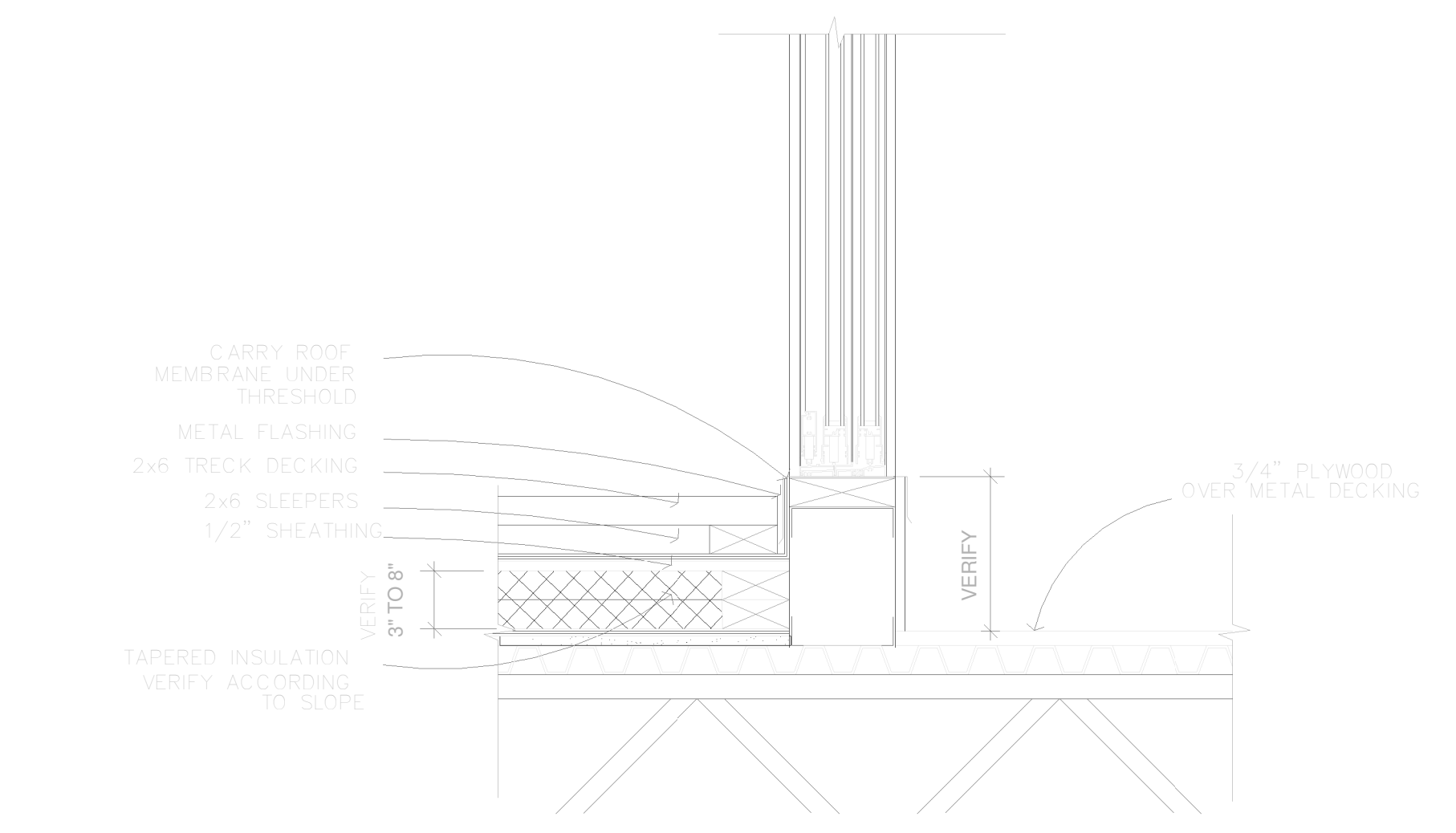
7 OUTSIDE CORNER PLAN DETAIL
 A15 1 1/2" = 1'-0"



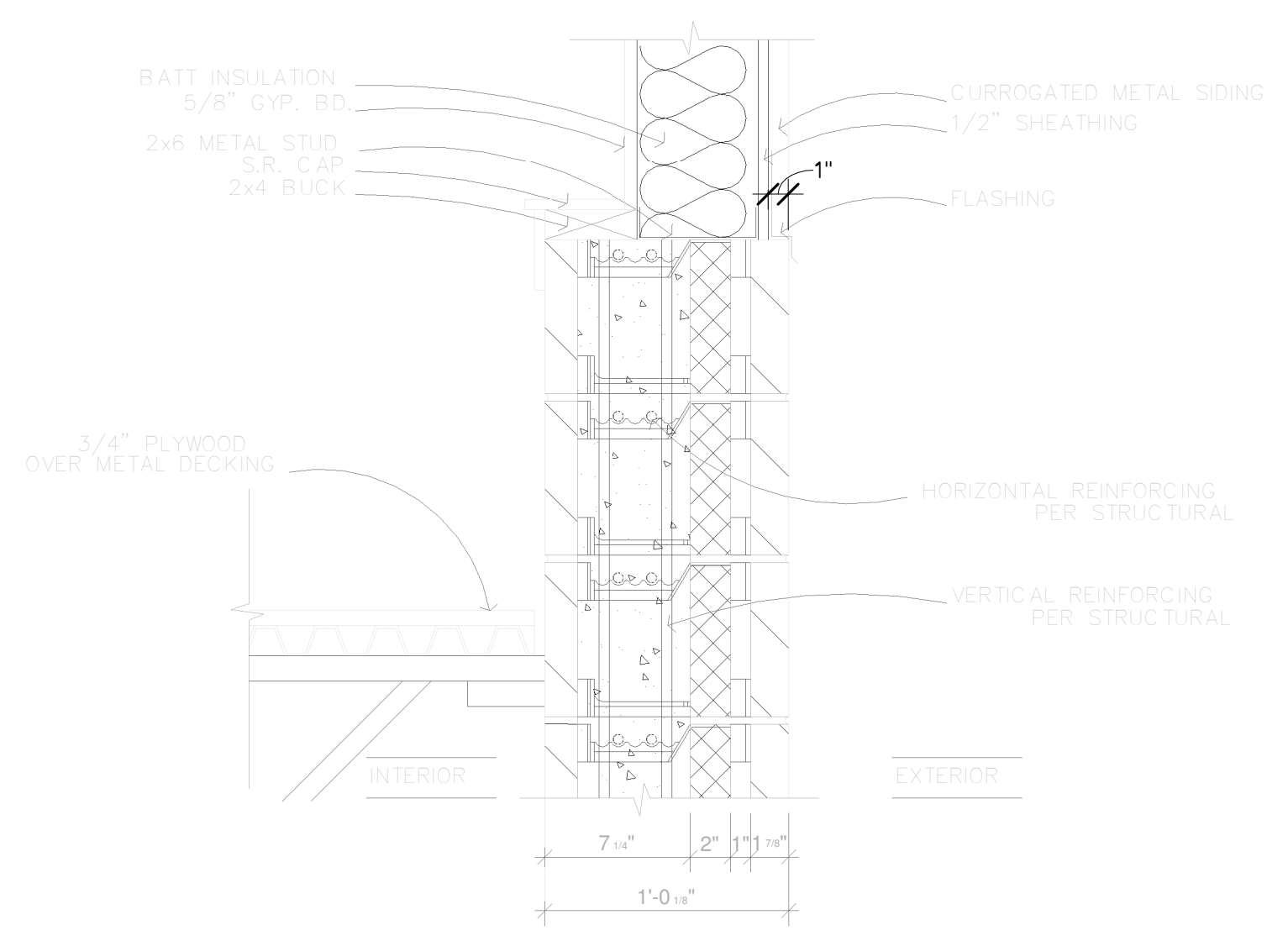
8 THROUGH-WALL EXPANSION JOINT
 A15 1 1/2" = 1'-0"



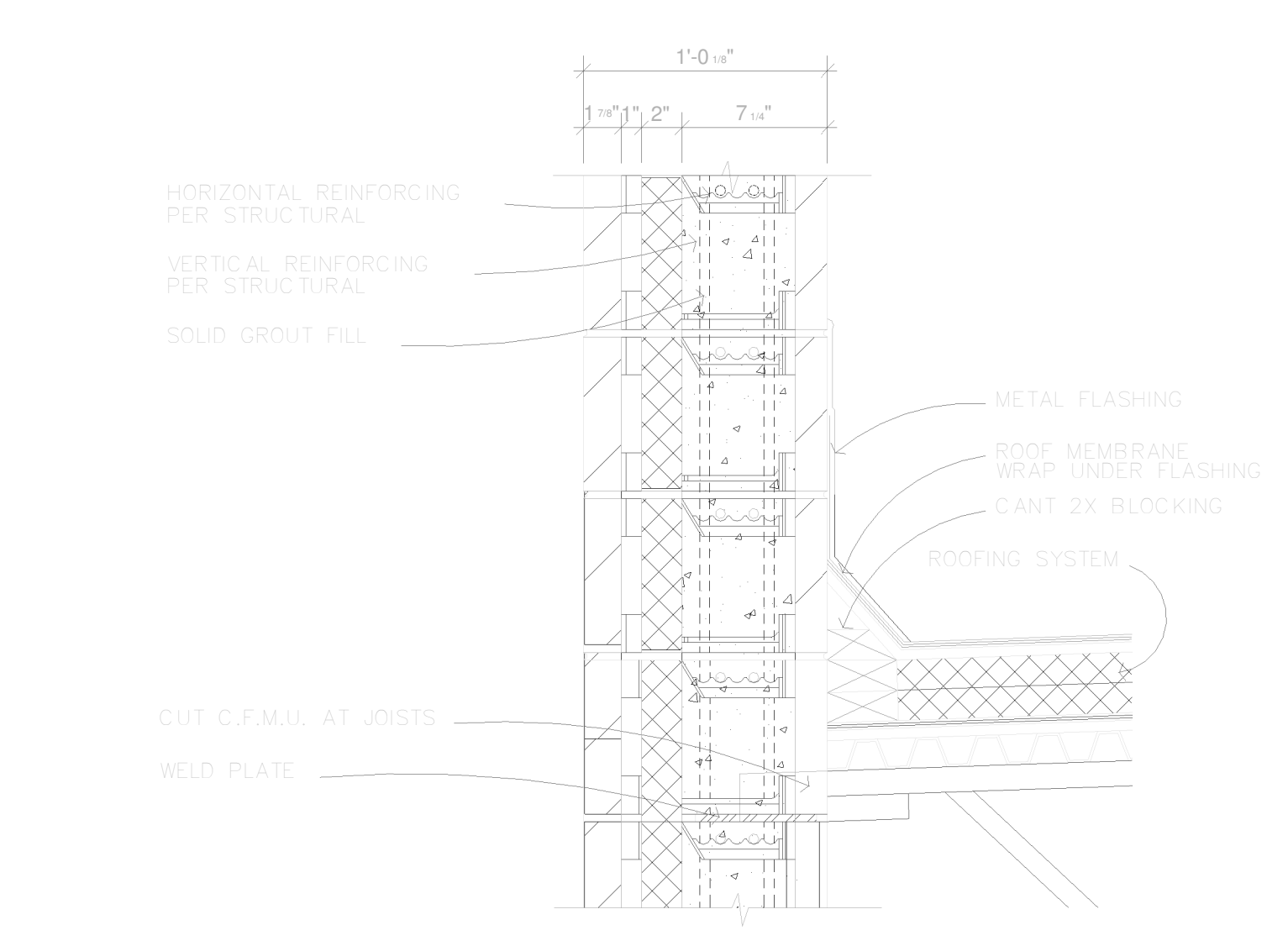
9 DOGHOUSE EAVE
 A15 1 1/2" = 1'-0"



10 DOGHOUSE DOOR SILL & ROOF JOINT
 A15 1 1/2" = 1'-0"



11 DOGHOUSE/PARAPET INTERSECTION
 A15 1 1/2" = 1'-0"



12 CANT DETAIL AT ROOF EDGE
 A15 1 1/2" = 1'-0"

BRUCE KNUTSON
 ARCHITECT
 530 NORTH 3RD ST. SUITE 530
 MINNEAPOLIS, MN 55401
 PHONE: 612.338.2804
 WWW.KNUTSON-ARCHITECTS.COM

DATE: I HEREBY CERTIFY THAT THIS REPORT WAS PREPARED BY ME OR UNDER MY CLOSE PERSONAL SUPERVISION AND THAT I AM A REGISTERED ARCHITECT IN THE STATE OF MINNESOTA.
 REGISTRATION NO. 11789

42ND STREET PHASE 2
 3422 42ND STREET EAST AND DIGHT AVE.
 MINNEAPOLIS

JOB NO: 0309

SHEET NO:
A15
 SECTION DETAILS