

1 MAIN FLOOR AND RETAIL
 A2 1/4" = 1'-0"

Parking Schedule	
Count	Level
30	
Grand total: 30	

DATE: JUNE 2006
 REVISIONS:
 REVIEW 10-24-06



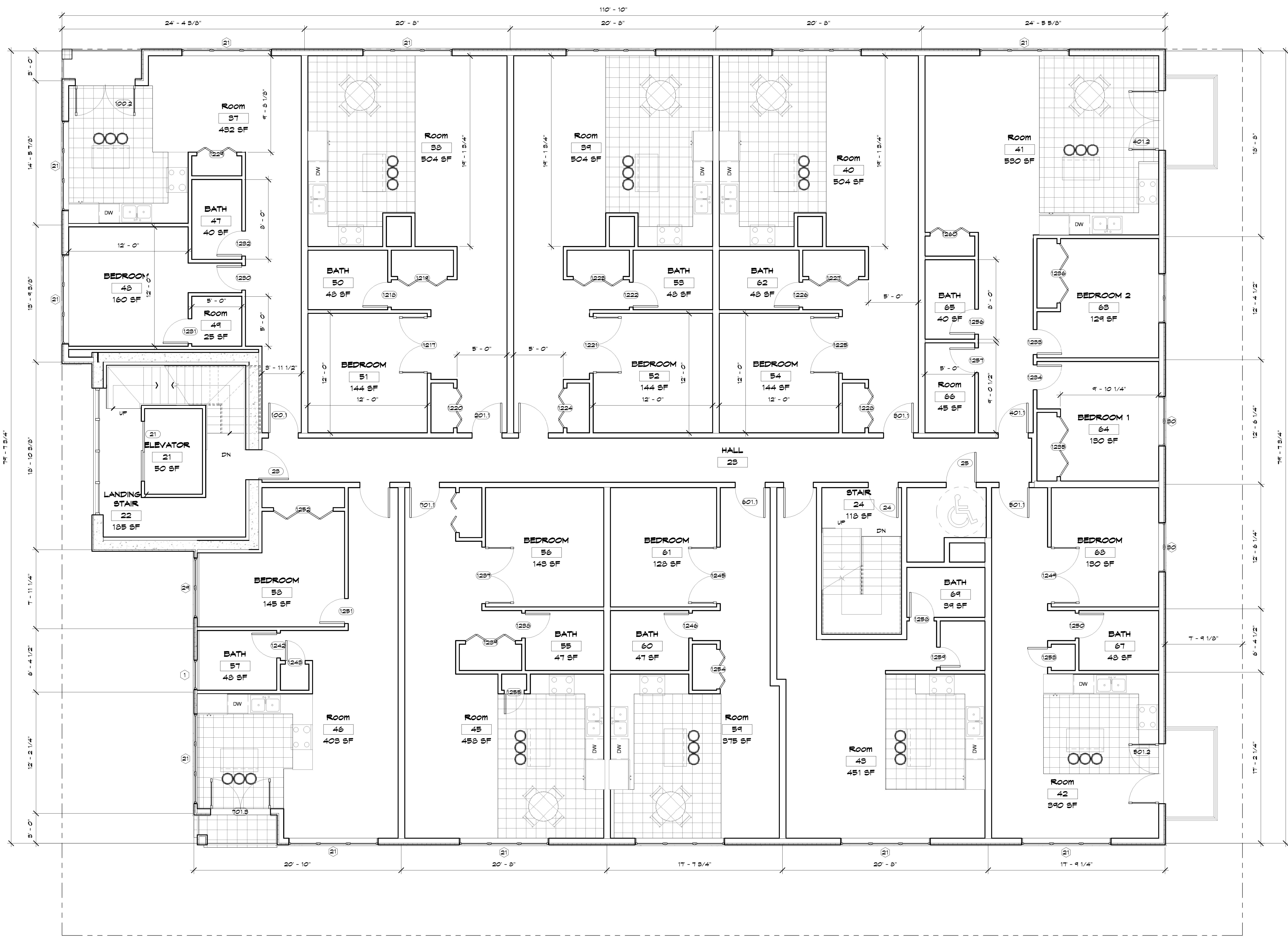
DATE: I HEREBY CERTIFY THAT THIS PORT WAS PREPARED BY ME OR UNDER MY CLOSE PERSONAL SUPERVISION AND THAT I AM A REGISTERED ARCHITECT UNDER THE LAWS OF THE STATE OF MINNESOTA.
 REGISTRATION NO. 17789

4701 NICOLLET AV. APTS.
 4701 NICOLLET AV SO
 MINNEAPOLIS, MN.

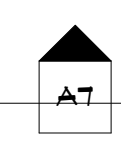
JOB NO: 4701

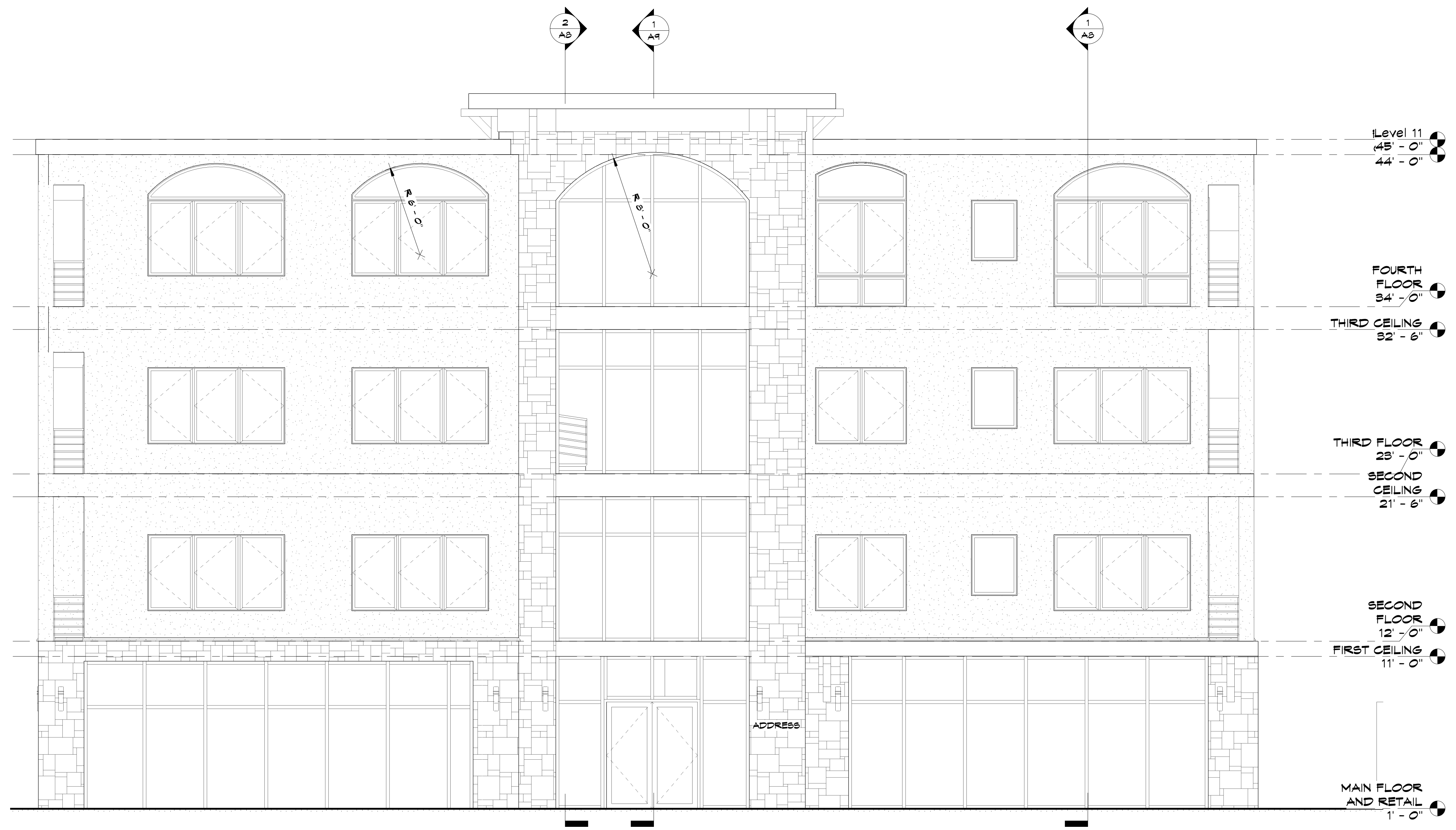
SHEET NO:
A2
 MAIN FLOOR -
 RETAIL

12/1/2008 2:10:44 PM

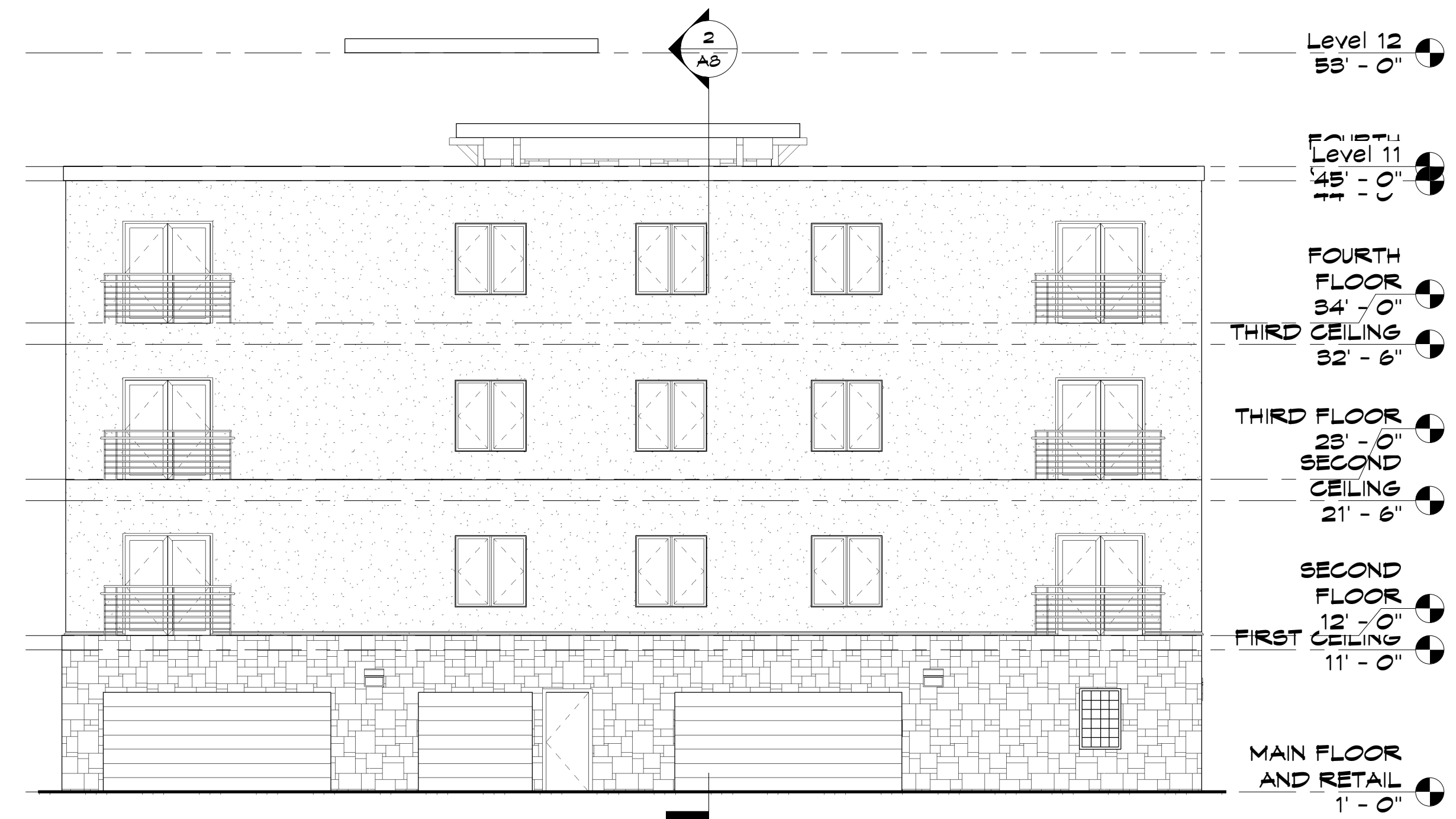


1 SECOND FLOOR
AS 1/4" = 1'-0"





1 WEST
A6 1/4" = 1'-0"



4 EAST
A6 1/2" = 1'-0"



1 SOUTH
AT 1/4" = 1'-0"



2 NORTH
AT 1/4" = 1'-0"

DATE: JUNE 2006
REVISIONS:
REVIEW 10-24-06

**BRUCE
KNUTSON**
ARCHITECTS
530 NORTH 3RD ST. SUITE 530
MINNEAPOLIS, MN 55401
PHONE: 612.338.1111
WWW.KNUTSON-ARCHITECTS.COM

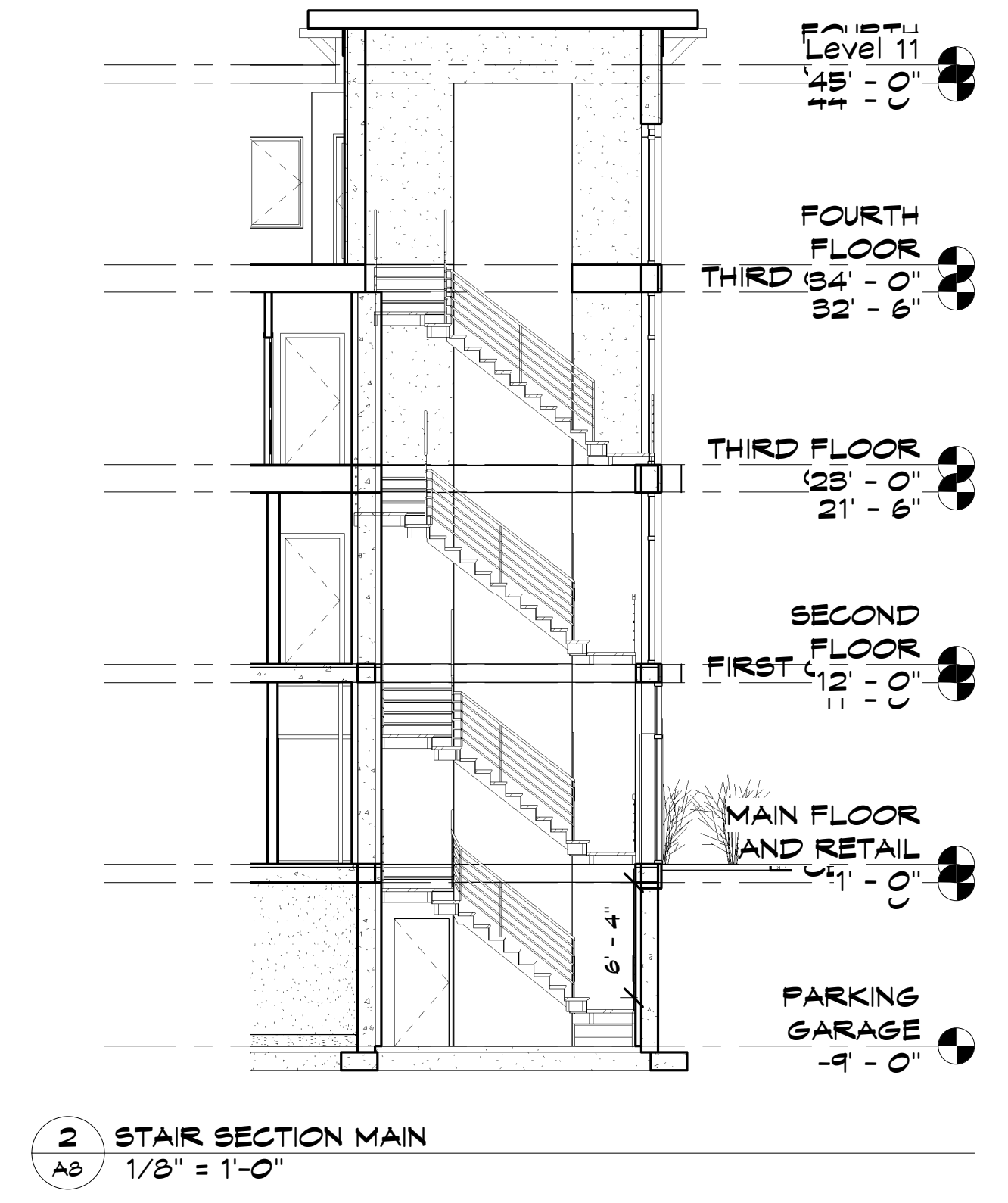
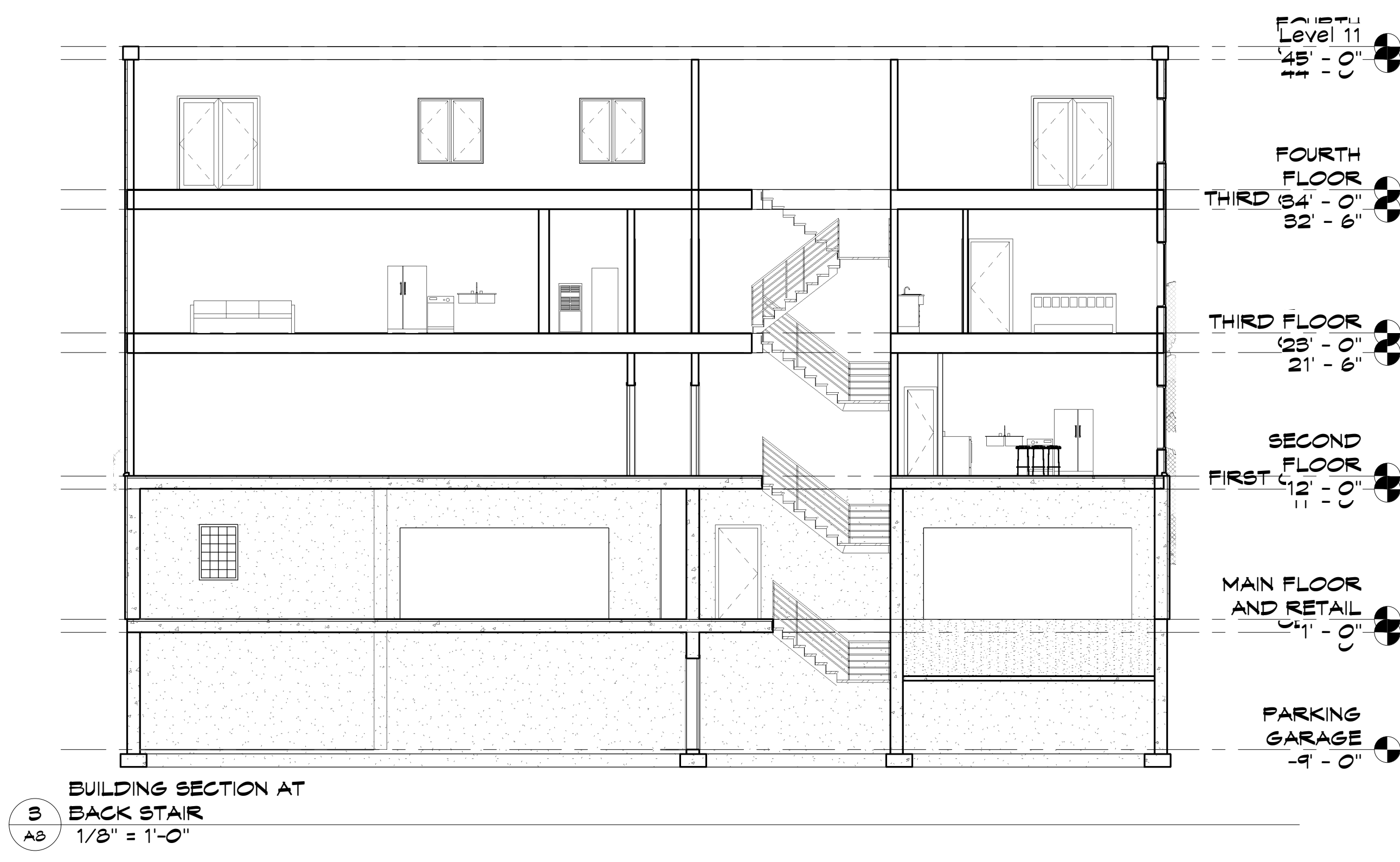
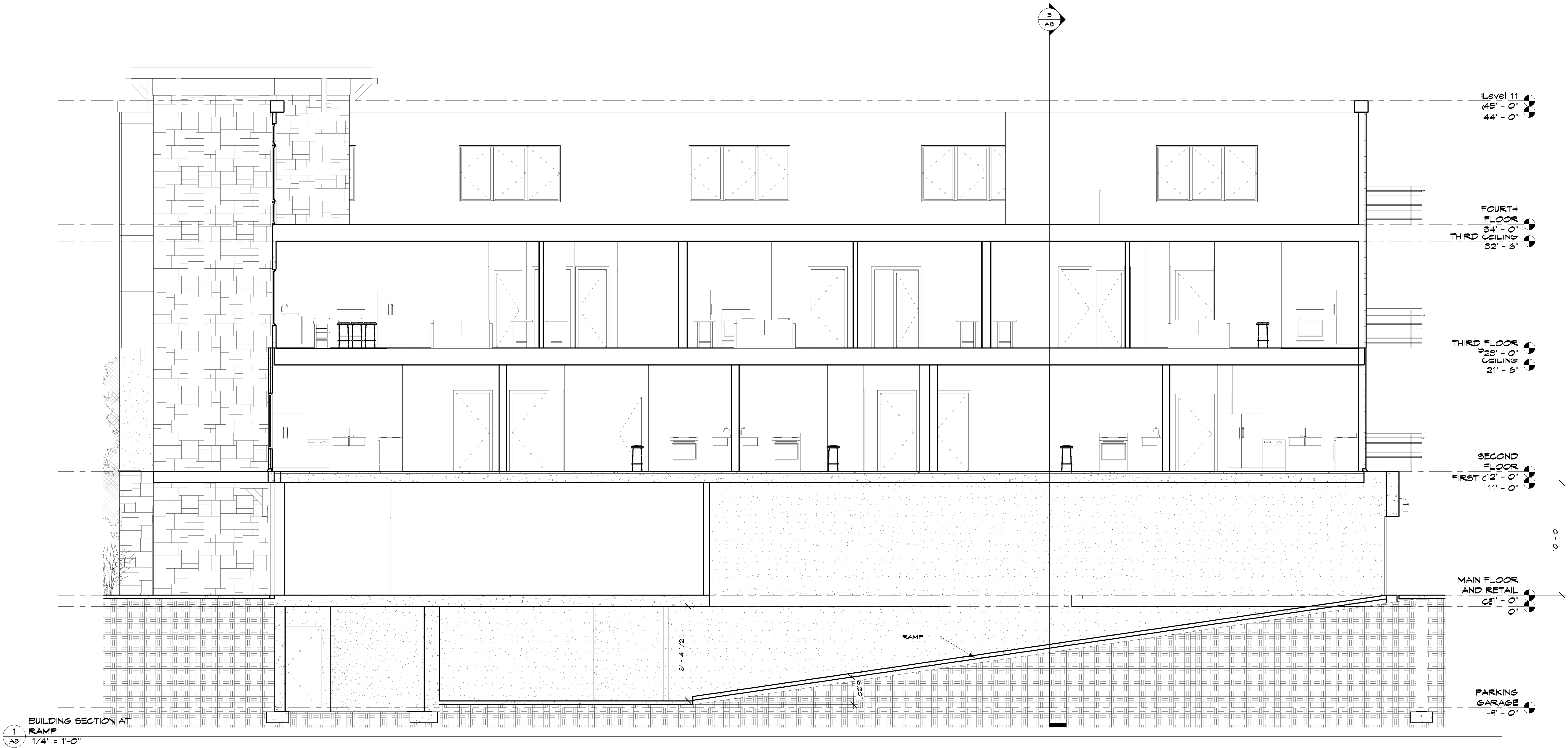
DATE: I HEREBY CERTIFY THAT THIS PORT WAS PREPARED BY ME OR UNDER MY CLOSE PERSONAL SUPERVISION AND THAT I AM A REGISTERED ARCHITECT IN THE STATE OF MINNESOTA.
REGISTRATION NO. 11789

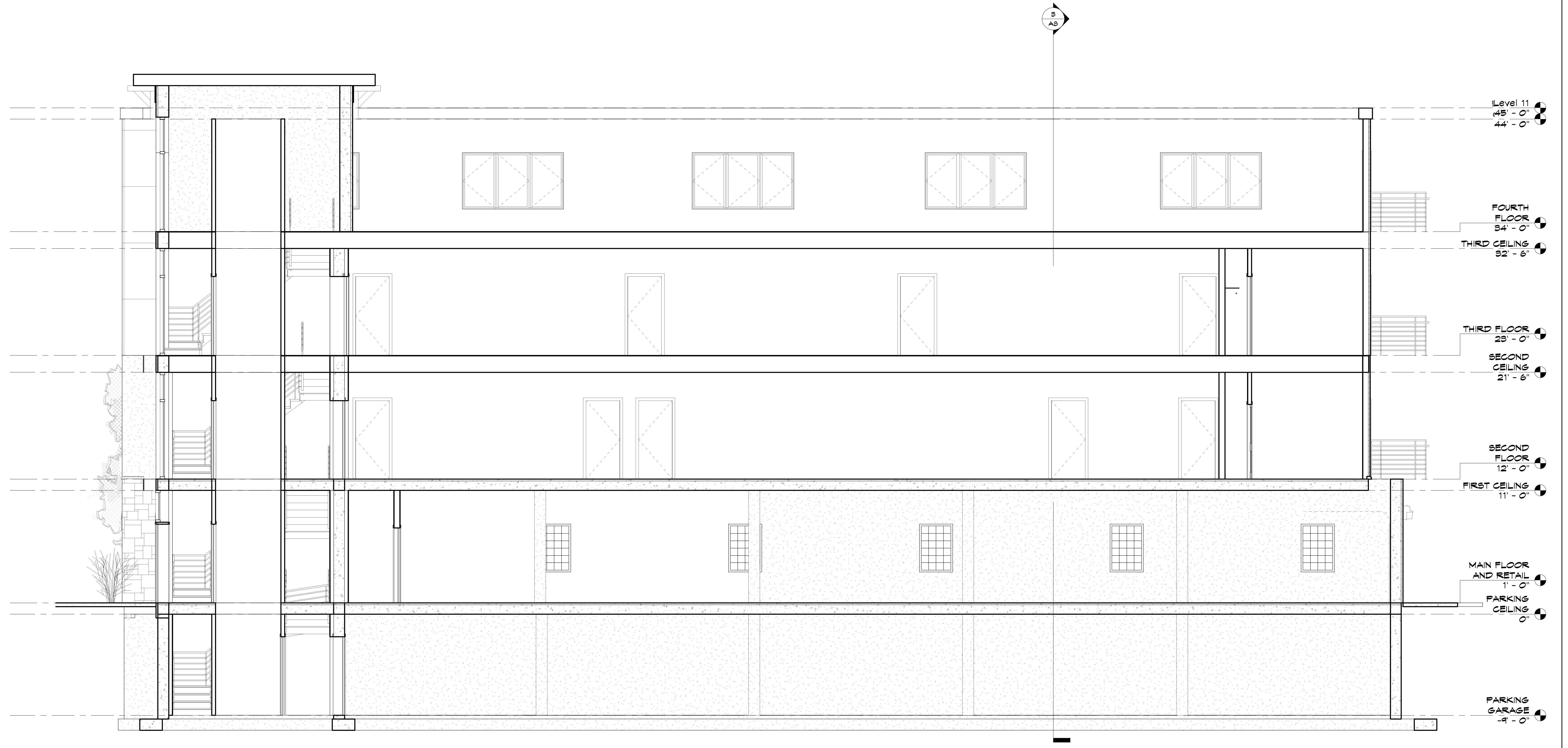
4701 NICOLLET AV. APTS.

JOB NO: 4701

SHEET NO:
A7
ELEVATIONS

12/17/2008 2:12:25 PM





1
A9 BUILDING SECTION AT
ELEVATOR
1/4" = 1'-0"

DATE: JUNE 2006

REVISIONS:

REVIEW 10-24-06

**BRUCE
KNUTSON**
ARCHITECTS
530 NORTH 3RD ST. SUITE 530
MINNEAPOLIS, MN 55401
PHONE: 612.338.1111
WWW.KNUTSON-ARCHITECTS.COM

DATE: I HEREBY CERTIFY THAT THIS PORT WAS PREPARED BY ME OR UNDER MY CLOSE PERSONAL SUPERVISION AND THAT I AM A REGISTERED ARCHITECT IN THE STATE OF MINNESOTA.
REGISTRATION NO: 17789

4701 NICOLLET AV. APTS.

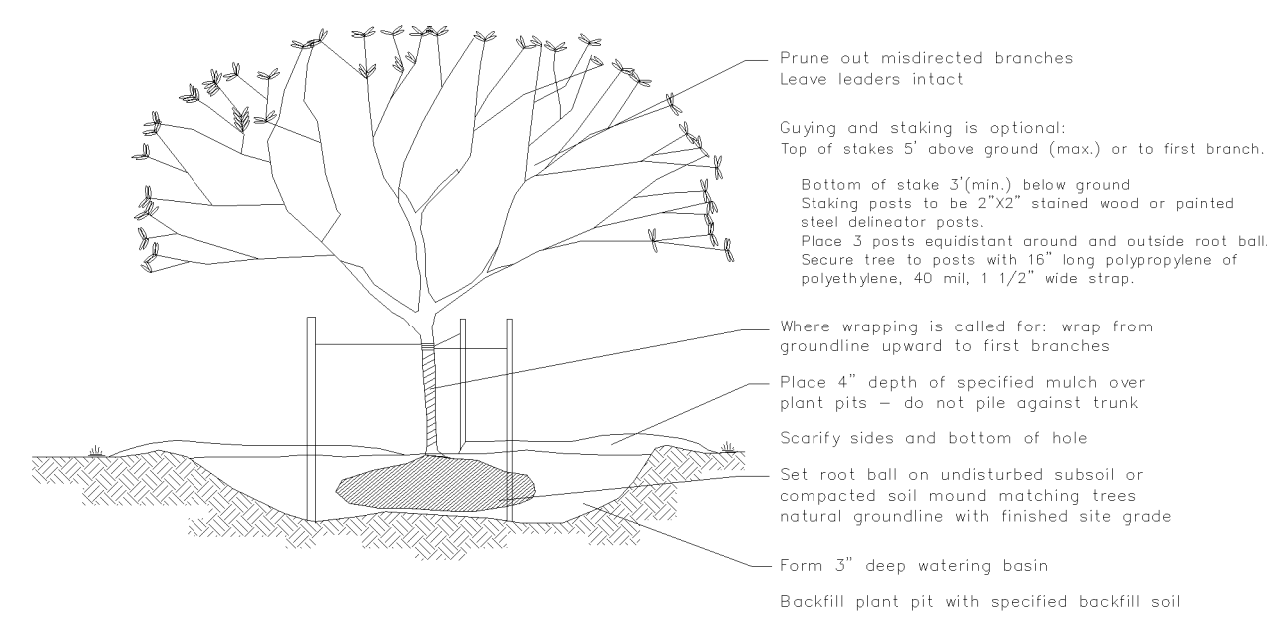
4701 NICOLLET AV SO
MINNEAPOLIS, MN.

JOB NO: 4701

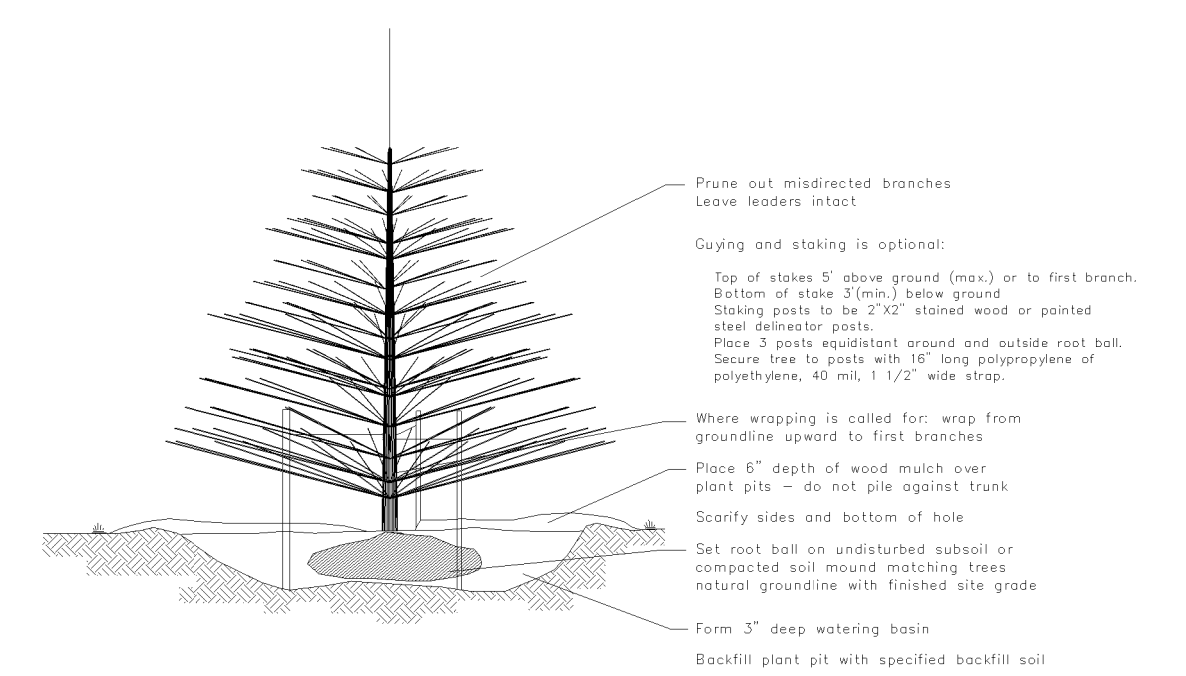
SHEET NO:

A9

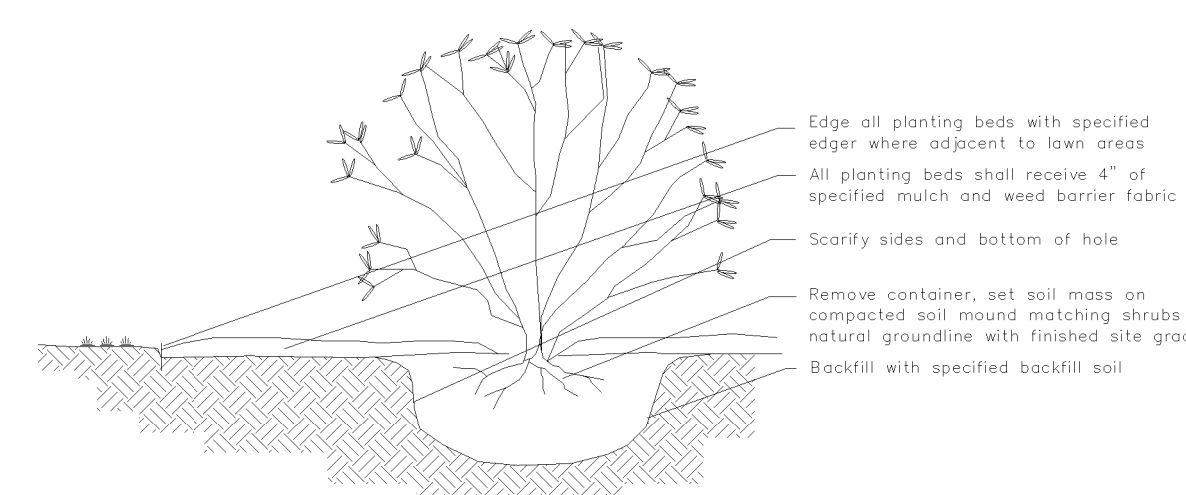
SECTION



TREE DETAIL



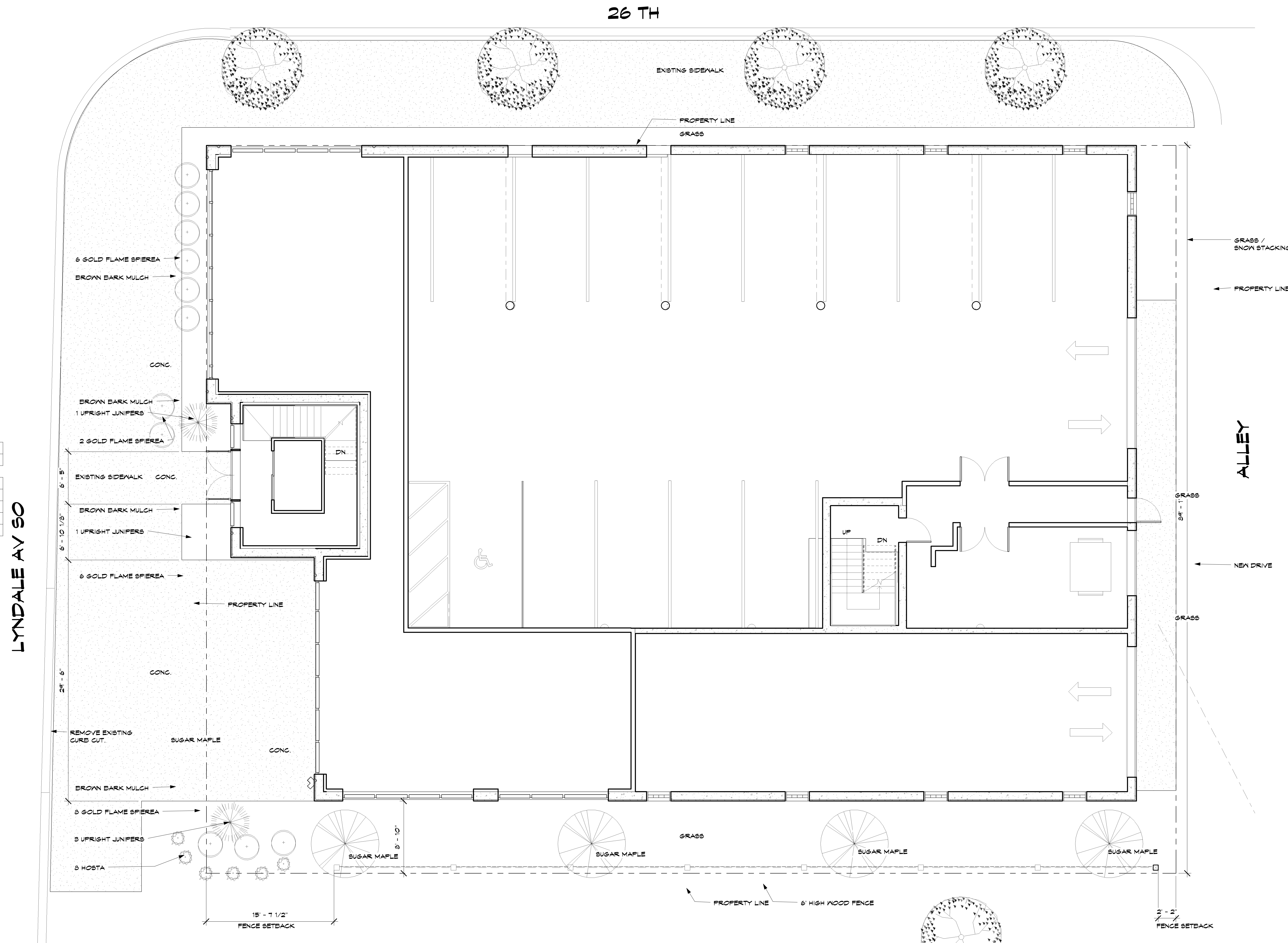
EVERGREEN DETAIL



SHRUB DETAIL

DEVELOPMENT DATA

Planting Schedule			
Count	Description	Model	Comments
11			
11	GOLD FLAME SPIEREA	6" POT	
4	MAPLE/SUGAR-ACER SACCHARUM	2.5' BB	
2	UPRIGHT JUNIFER	12" POT	
6	VARIGATED HASTA	6" POT	



1 LANDSCAPE PLAN
L1 5/16" = 1'-0"

DATE: JUNE 2006

REVISIONS:

REVIEW 10-24-06

BRUCE KNUTSON
ARCHITECTS
530 NORTH 3RD ST, SUITE 530
MINNEAPOLIS, MN 55401
PHONE: 612.338.7884
WWW.KNUTSON-ARCHITECTS.COM

DATE: I HEREBY CERTIFY THAT THIS REPORT WAS PREPARED BY ME OR UNDER MY SUPERVISION AND THAT I AM A REGISTERED ARCHITECT IN THE STATE OF MINNESOTA. REGISTRATION NO. 17789

4701 NICOLLET AV. APTS.

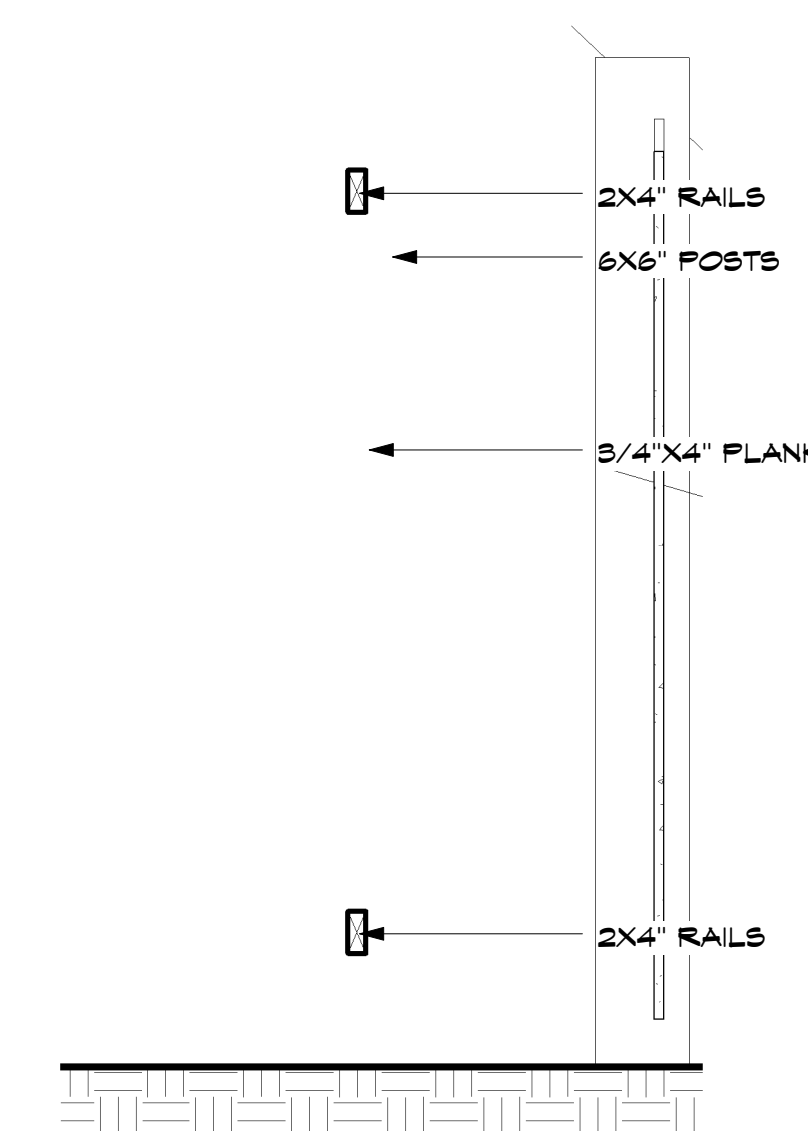
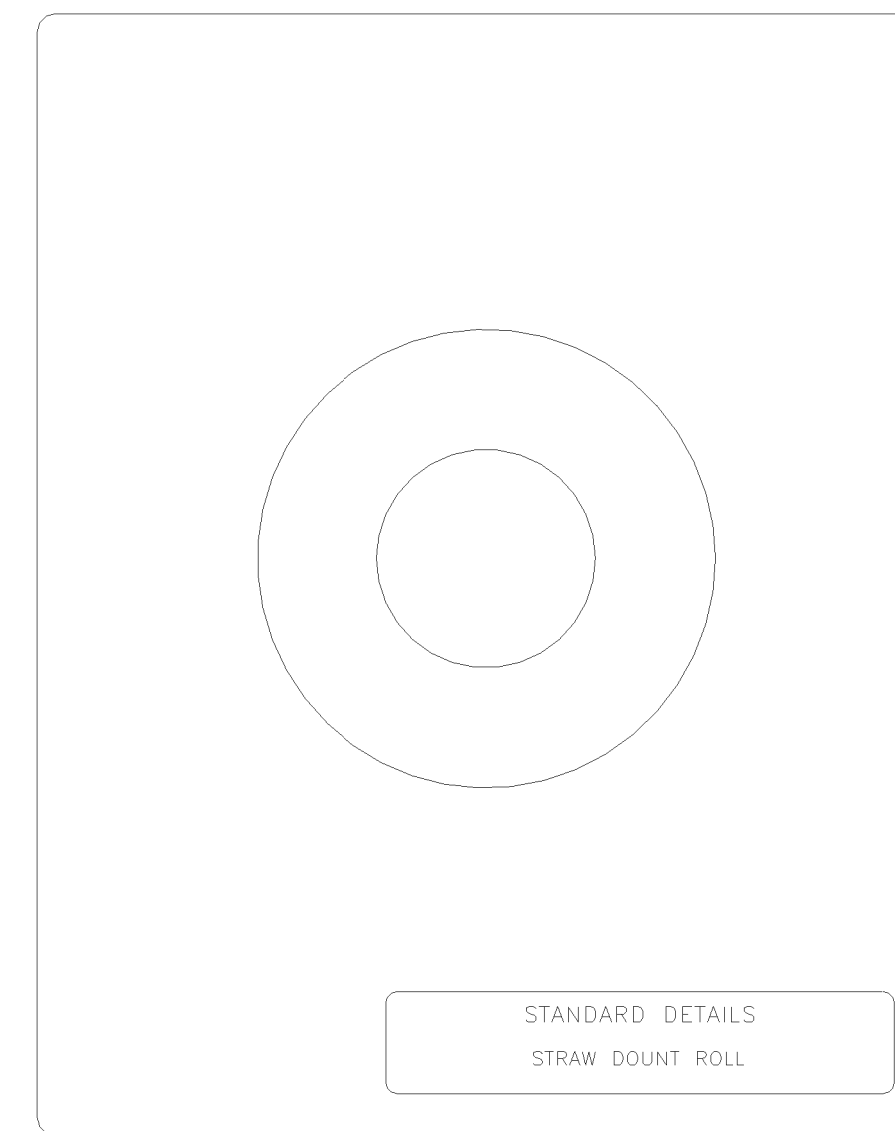
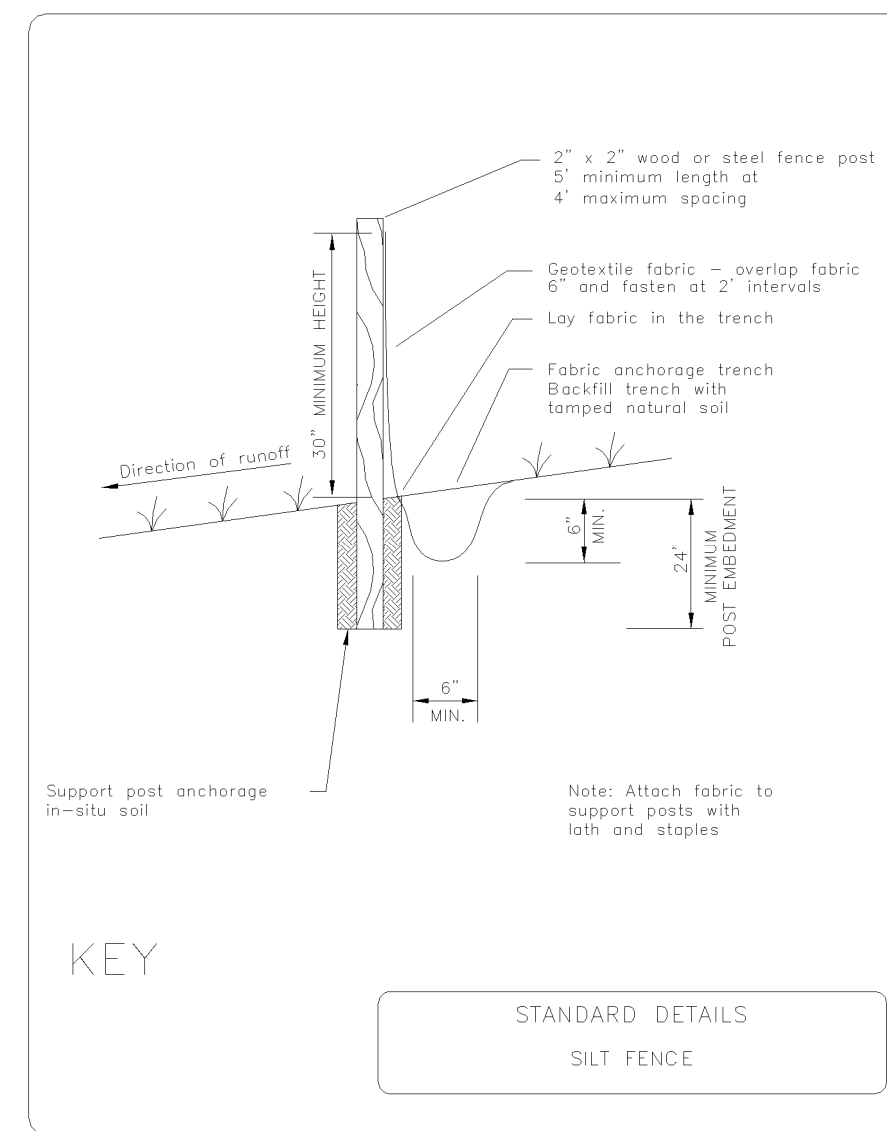
4701 NICOLLET AV SO
MINNEAPOLIS, MN.

JOB NO: 4701

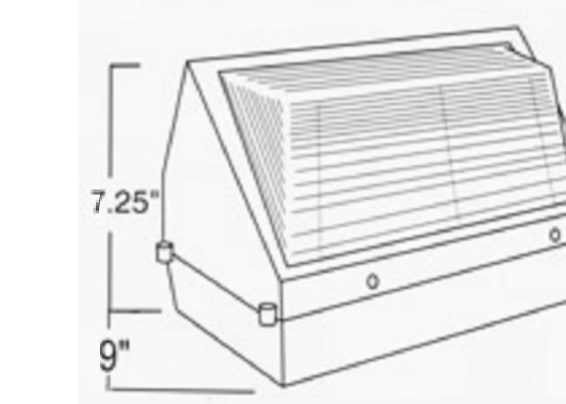
SHEET NO:

L1

LANDSCAPE



DIMENSIONS



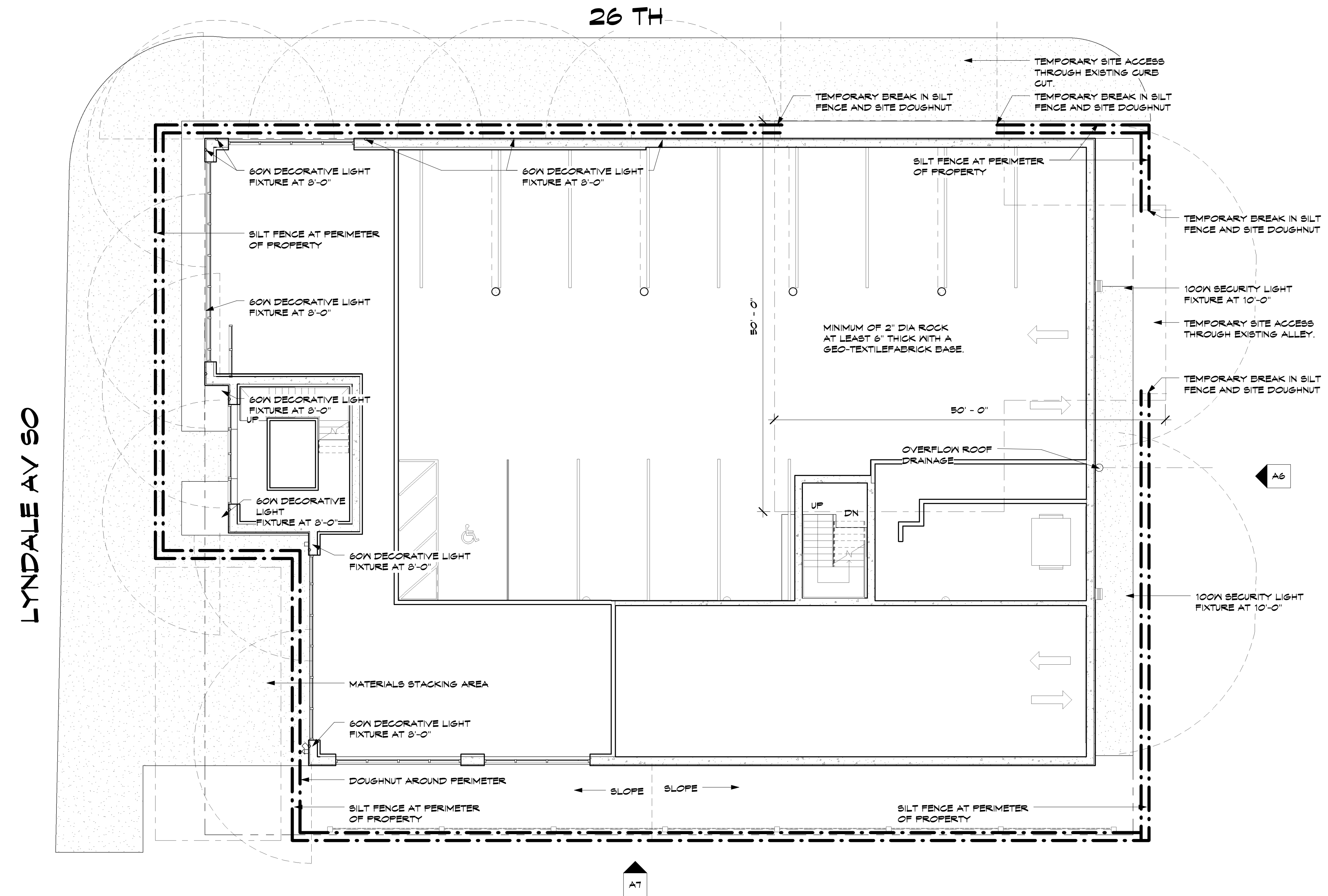
TECHLIGHTING MNPB2A

100 WATT METAL HALIDE LAMP
BRONZE POWDER COAT FINISH
8" HIGH
1 1/2" WIDE
9,200 LUMENS



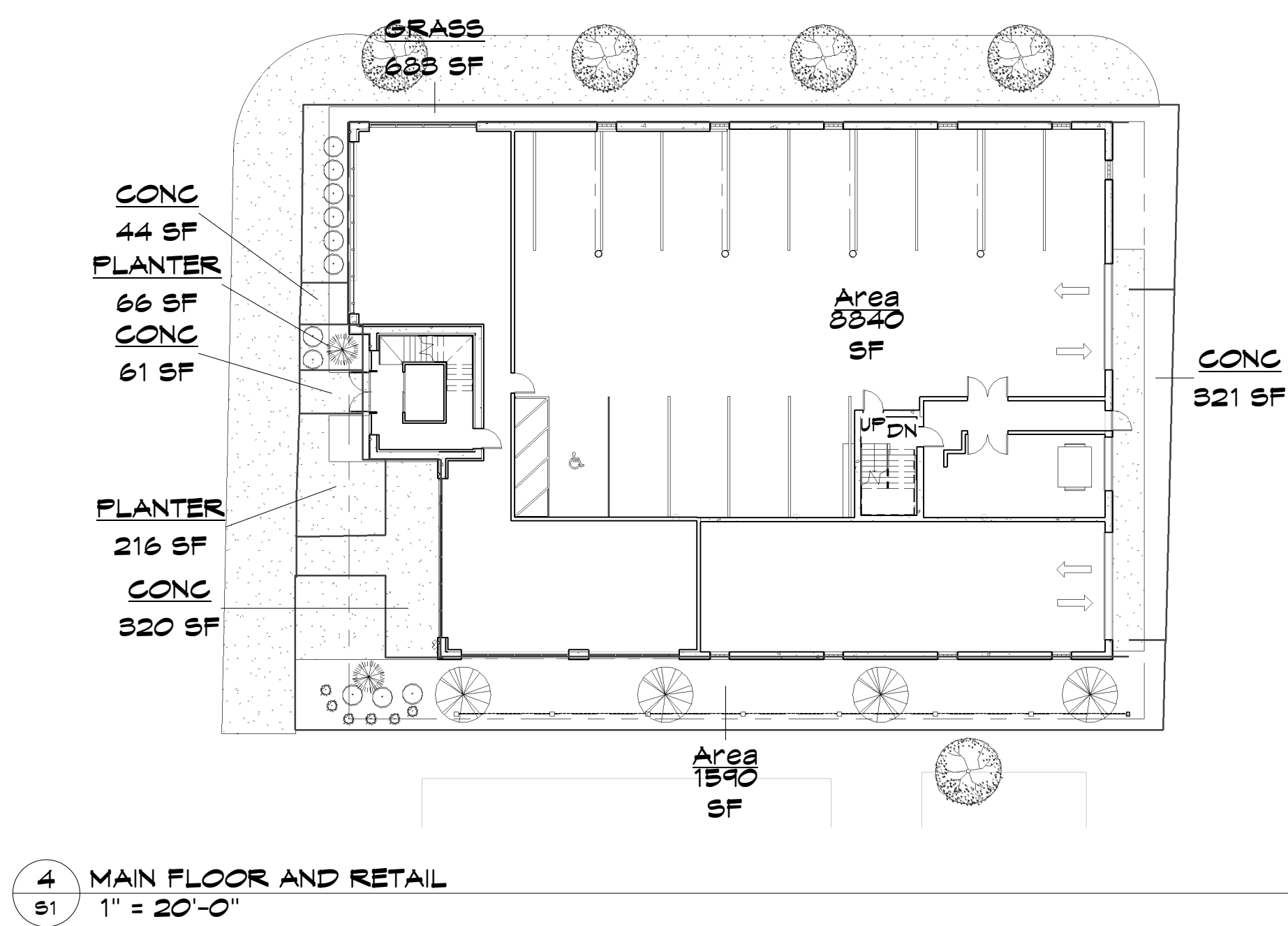
HOLLYWOOD HILLS COLLECTION

60 WATT BULB
SILVER FINISH
18" HIGH
5 1/2" WIDE
1 1/2" FROM WALL
710 LUMENS



1
L2 UTILITY, LIGHTING AND LOGISTICS PLAN
1/8" = 1'-0"

2701 NICOLLET AV APTS.



DATE: JUNE 2006

REVISIONS:

REVIEW 10-24-06

**BRUCE
KNUTSON**
ARCHITECTS
530 NORTH 3RD ST. SUITE 530
MINNEAPOLIS, MN 55401
PHONE: 612.338.7864
WWW.KNUTSON-ARCHITECTS.COM

DATE: I HEREBY CERTIFY THAT THIS PORT WAS PREPARED BY ME OR UNDER MY CLOSE PERSONAL SUPERVISION AND THAT I AM A REGISTERED ARCHITECT IN THE STATE OF MINNESOTA.
REGISTRATION NO. 17789

4701 NICOLLET AV. APTS.

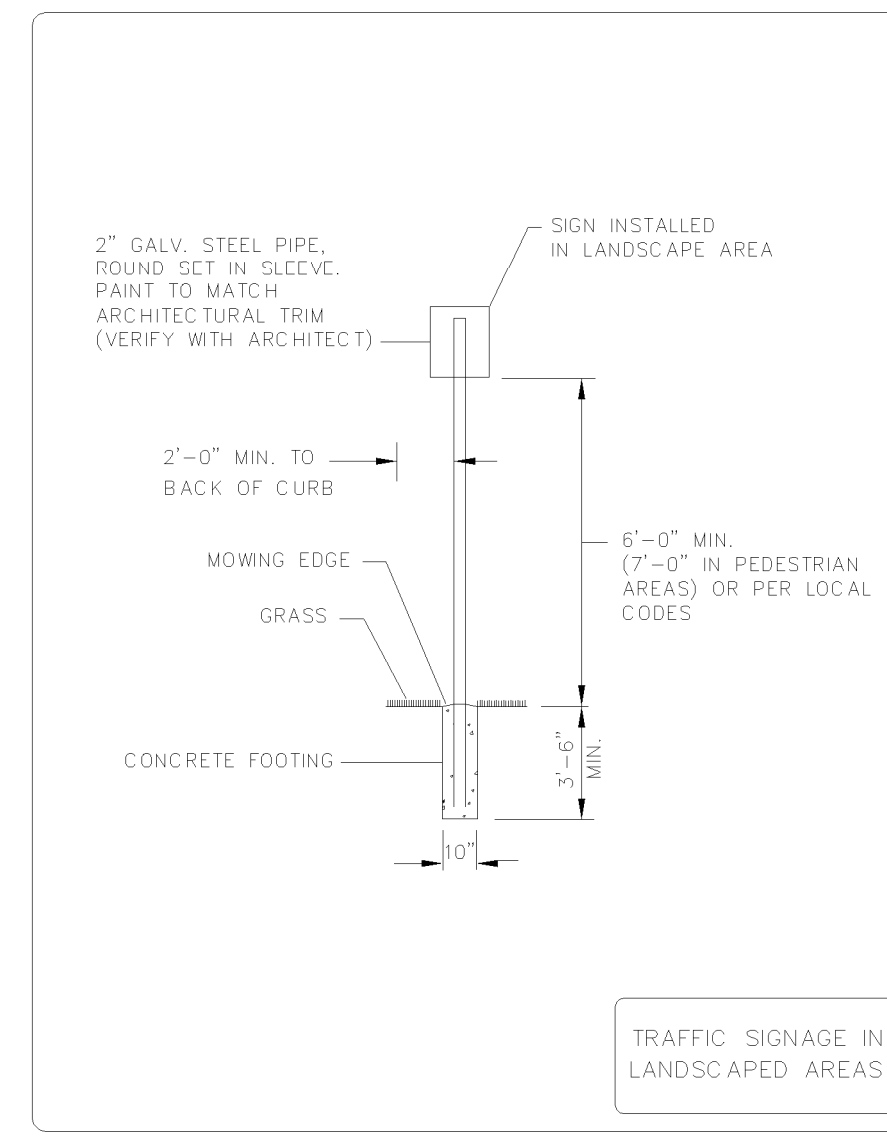
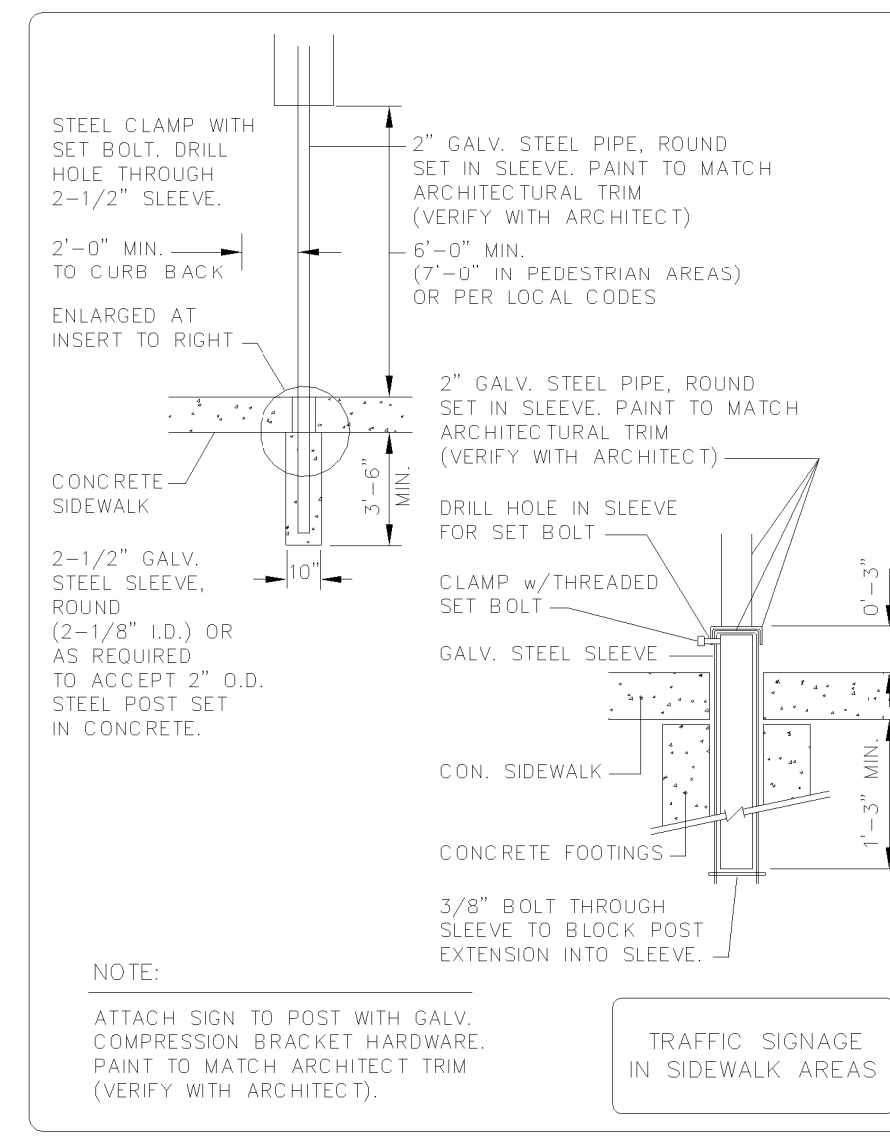
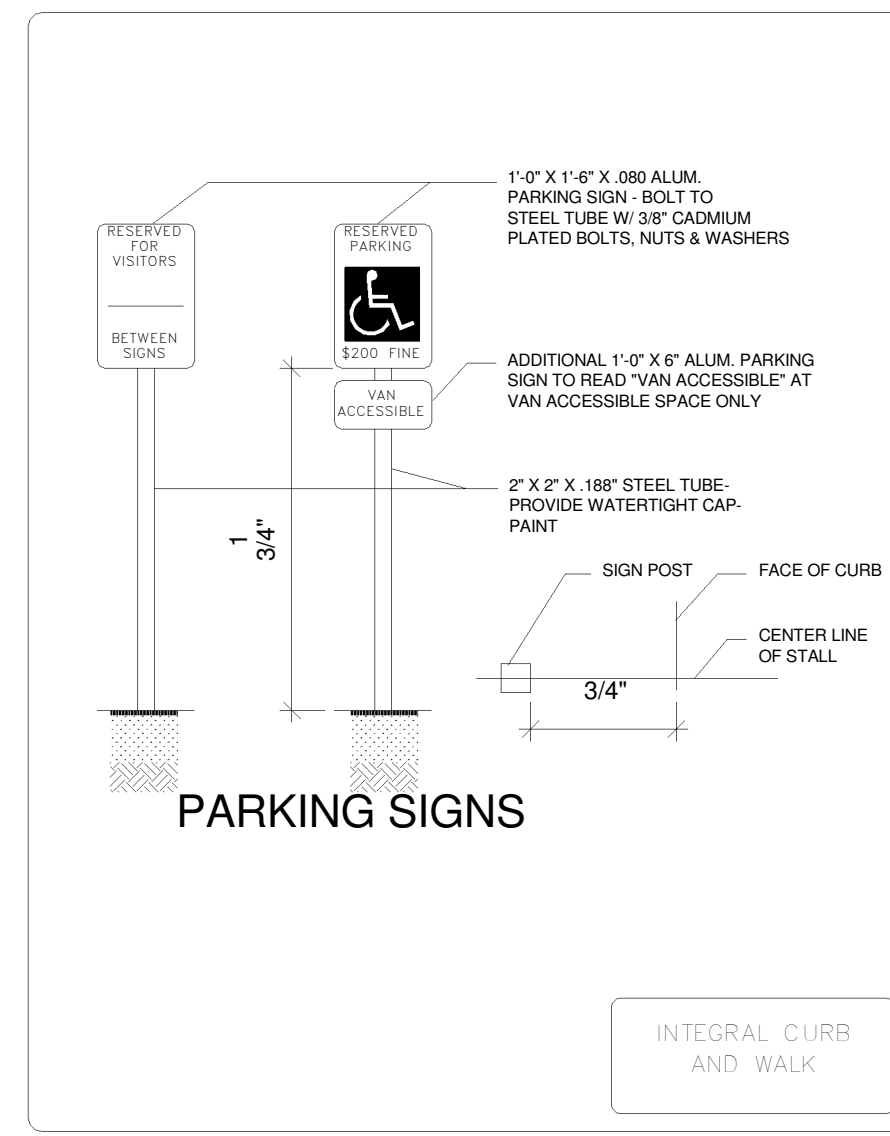
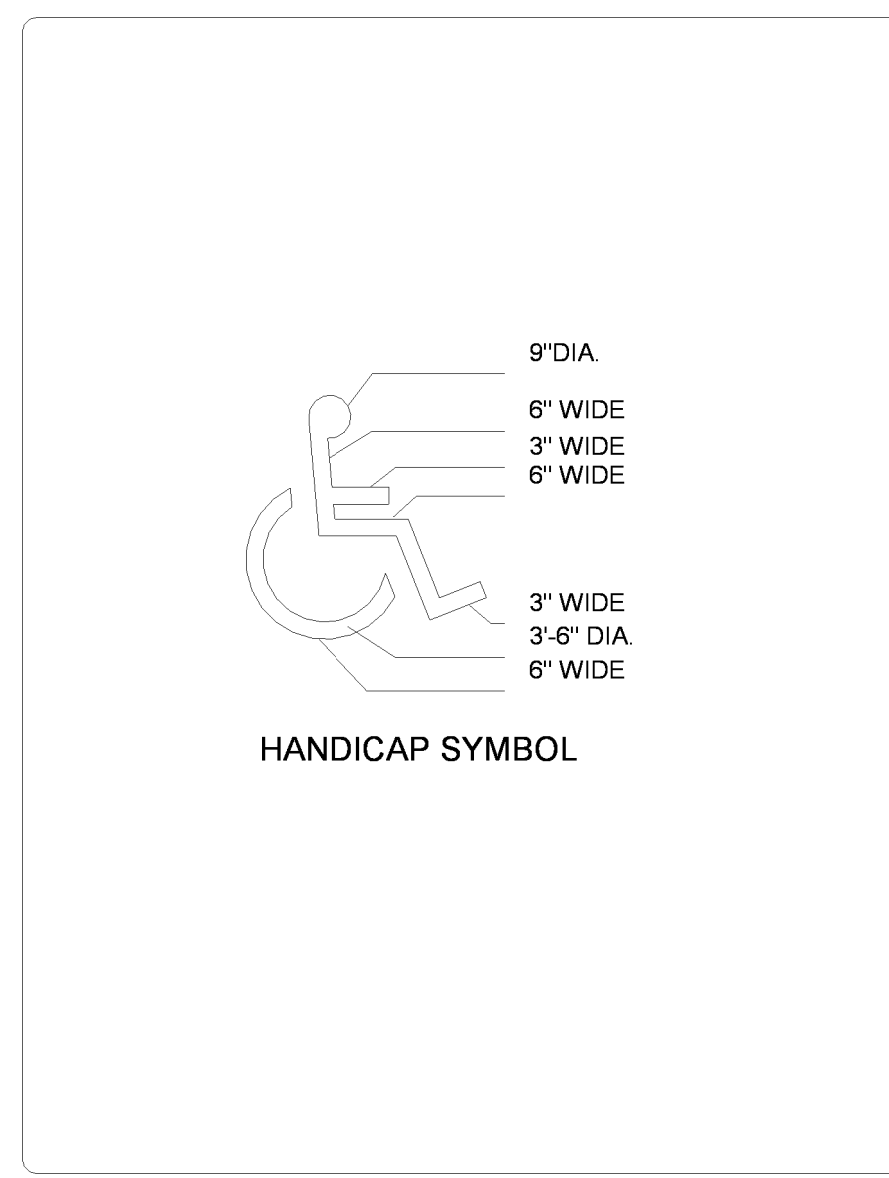
4701 NICOLLET AV SO
MINNEAPOLIS, MN.

JOB NO: 4701

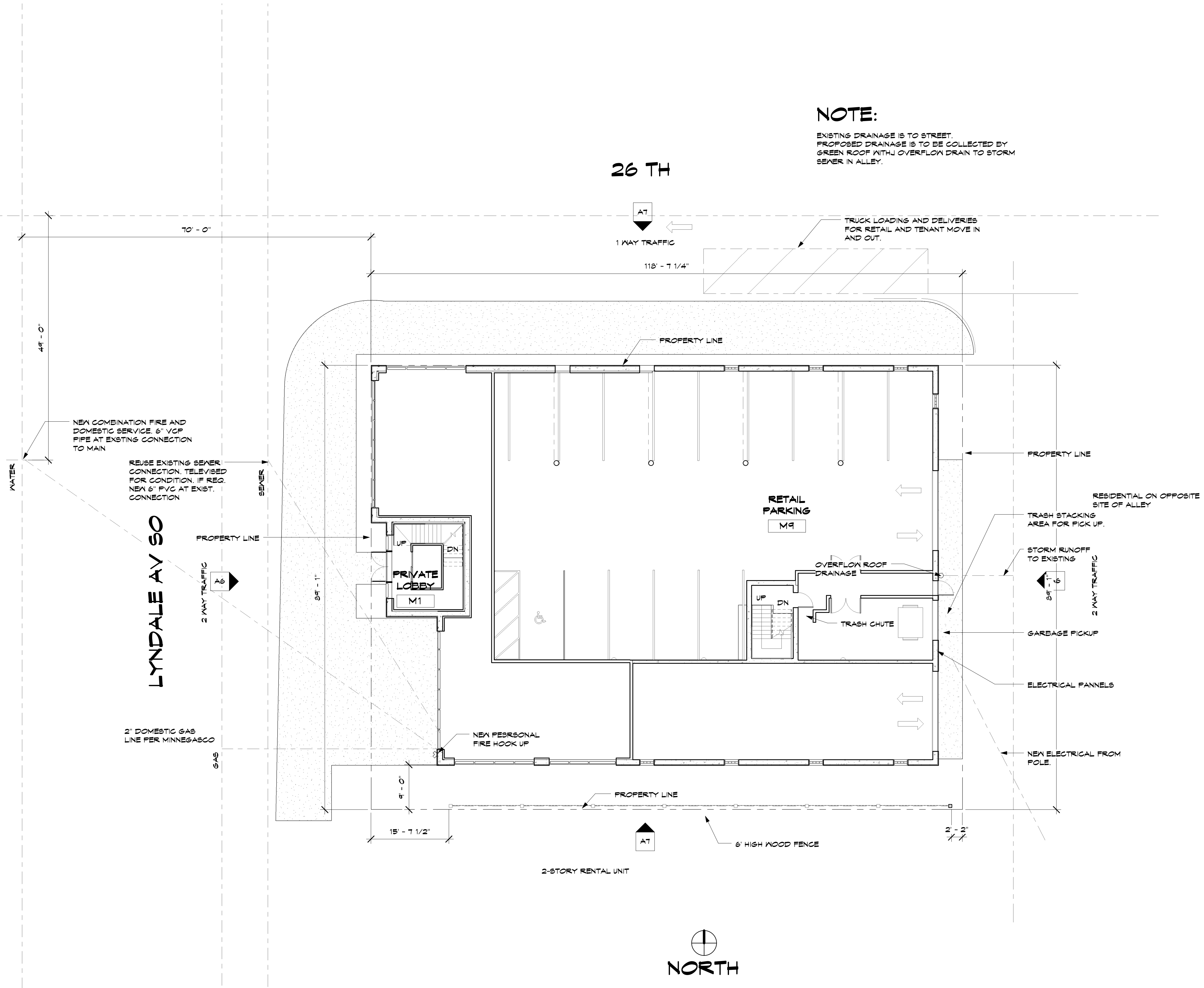
SHEET NO:

S1

SITE PLAN



NOTE:
 EXISTING DRAINAGE IS TO STREET.
 PROPOSED DRAINAGE IS TO BE COLLECTED BY GREEN ROOF WITH OVERFLOW DRAIN TO STORM SEWER IN ALLEY.



1 SITE PLAN WITH PROPOSED FOOTPRINT
 1" = 10'-0"

