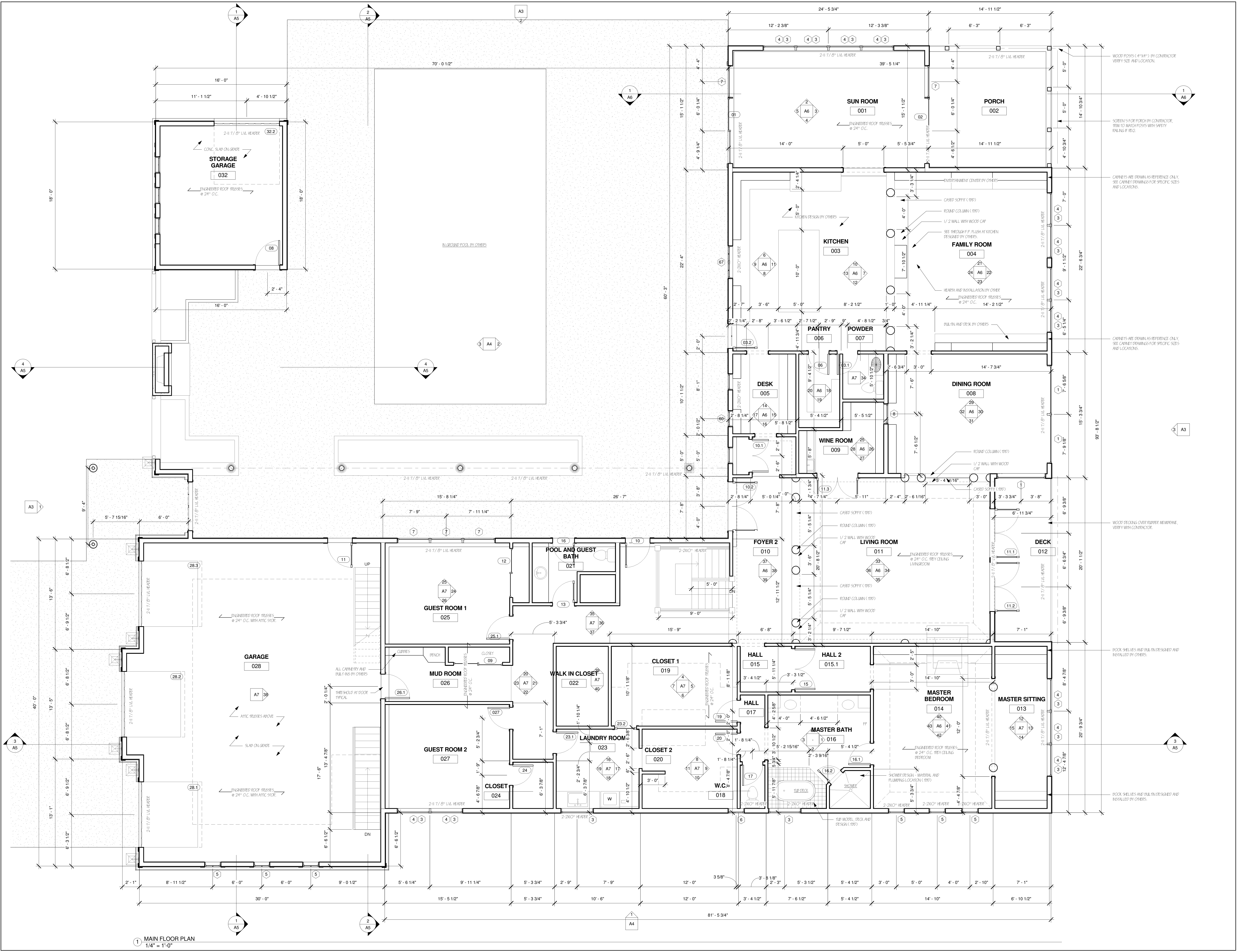
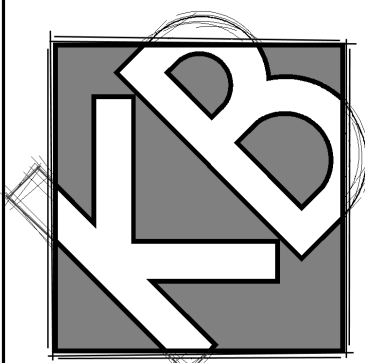
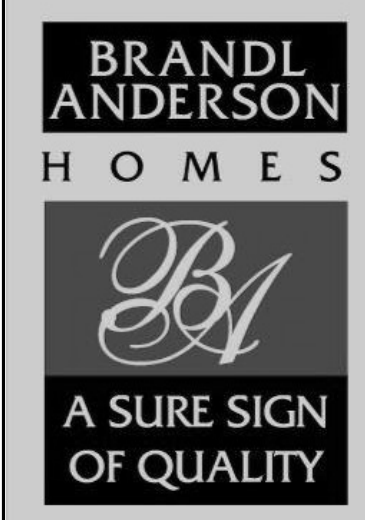


DESIGNS  
9995 WEST 69TH ST.  
SUITE 102  
EDEN PRAIRIE, MN. 55334  
PHONE: 952-826-2222  
FAX: 952-941-6515



1 MAIN FLOOR PLAN  
1/4" = 1'-0"

11/3/2008 7:15:56 PM



DESIGNS  
9995 WEST 69TH ST.  
SUITE 102  
EDEN PRAIRIE, MN. 55334  
PHONE: 952-826-2222  
FAX: 952-941-6515

REO RAJ PROJECT

IN THE SW 1/4 OF SEC. 7-17-24,  
HENNEPIN COUNTY, MINNESOTA

JOB NO: 2004

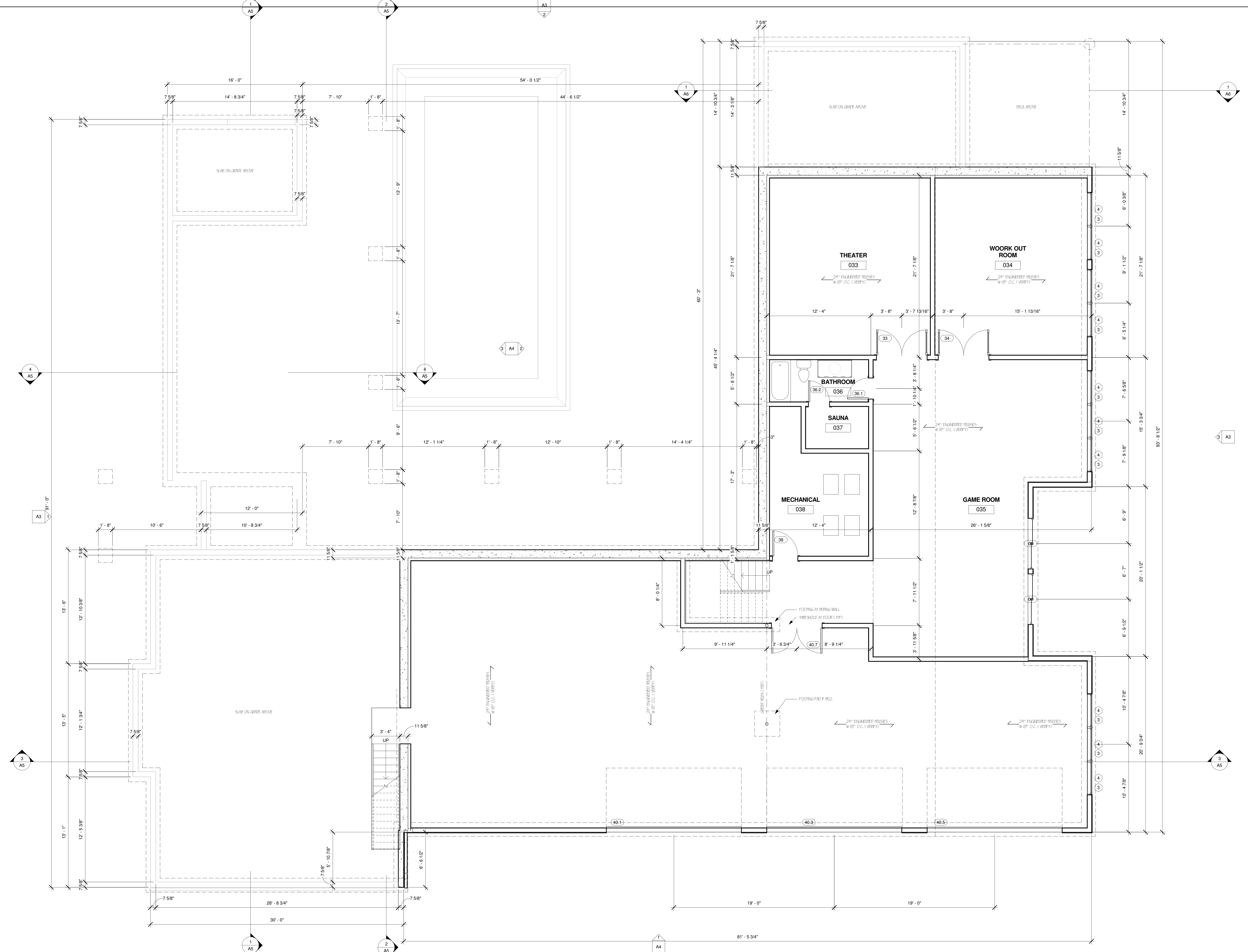
SHEET NO:

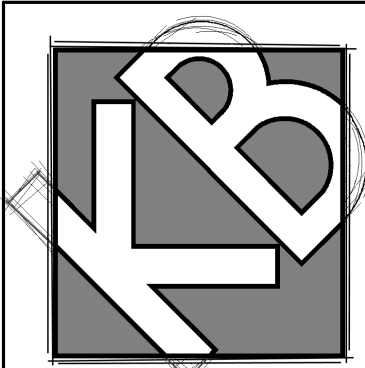
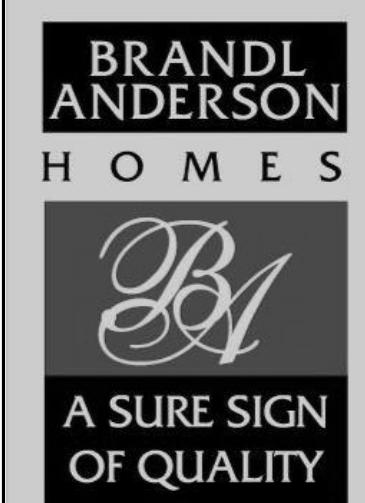
**A2**

BASEMENT

11/3/2008 7:15:56 PM

1 BASEMENT SLAB  
1/4" = 1'-0"





9995 WEST 69TH ST.  
SUITE 102  
EDEN PRAIRIE, MN. 55334  
PHONE: 952-826-2222  
FAX: 952-941-6515

REO RAJ PROJECT  
IN THE SW 1/4 OF SEC. 7-17-24  
HENNEPIN COUNTY, MINNESOTA

JOB NO: 2004

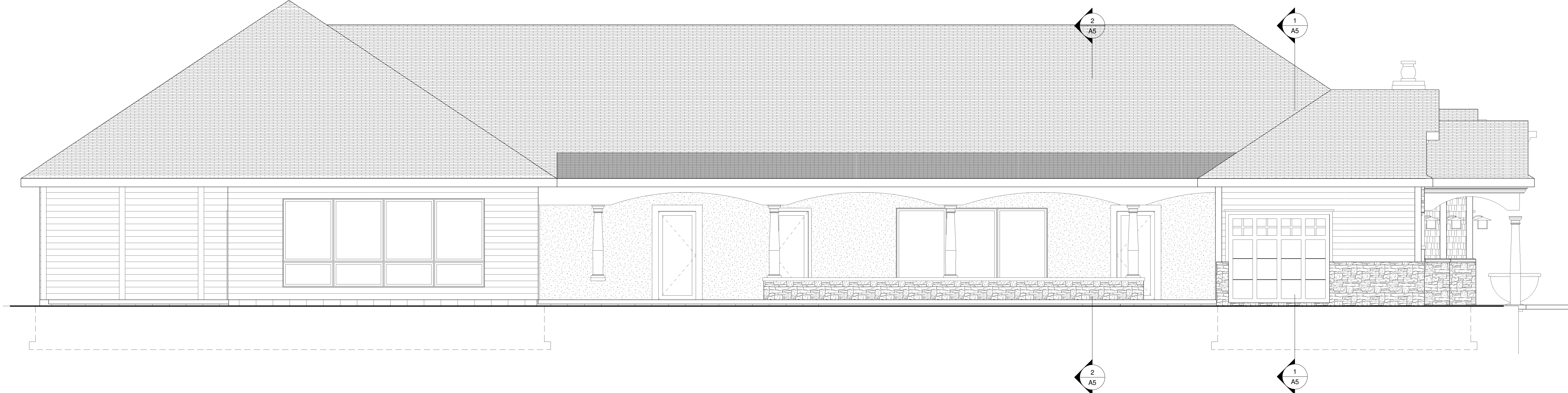
SHEET NO:

**A3**

ELEVATIONS



① WEST EXTERIOR ELEVATION  
1/4" = 1'-0"

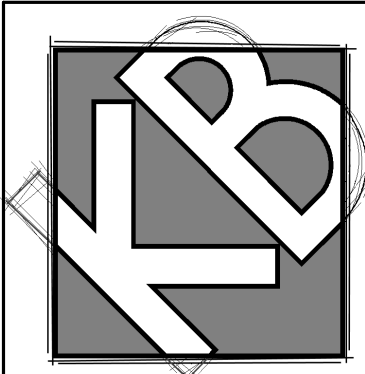
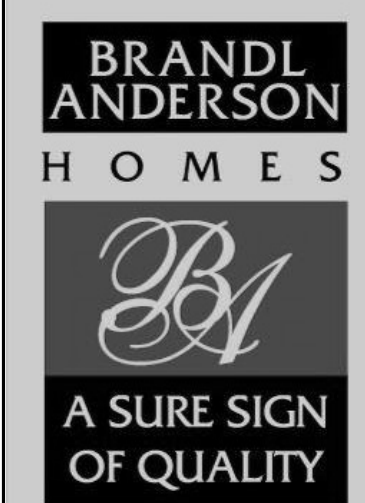


② NORTH EXTERIOR ELEVATION  
1/4" = 1'-0"

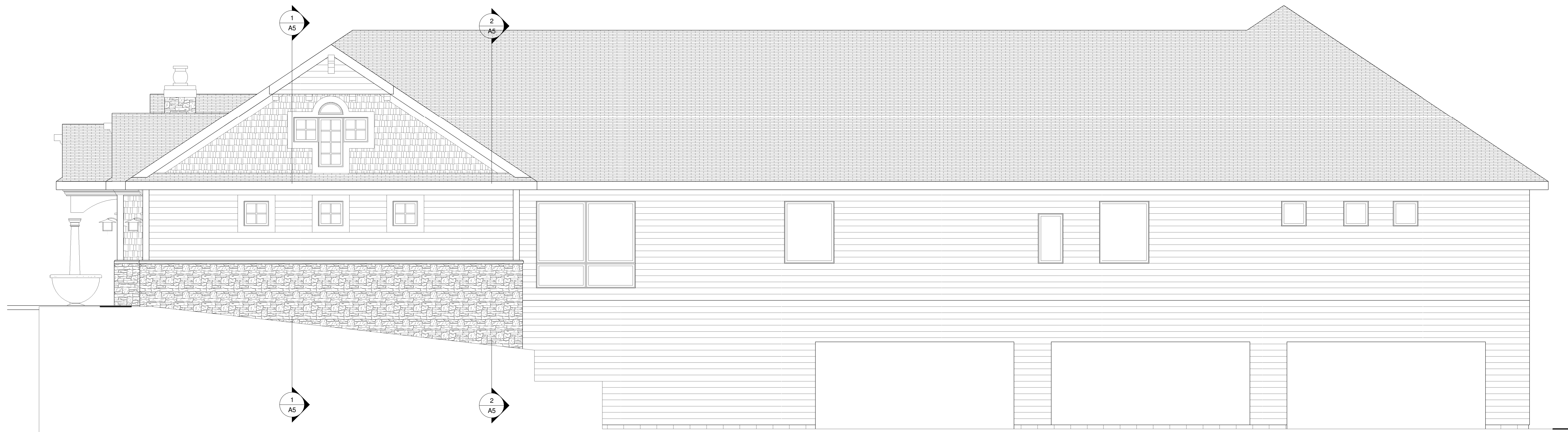


③ EAST EXTERIOR ELEVATION  
1/4" = 1'-0"





DESIGNS  
9995 WEST 69TH ST.  
SUITE 102  
EDEN PRAIRIE, MN. 55334  
PHONE: 952-826-2222  
FAX: 952-941-6515

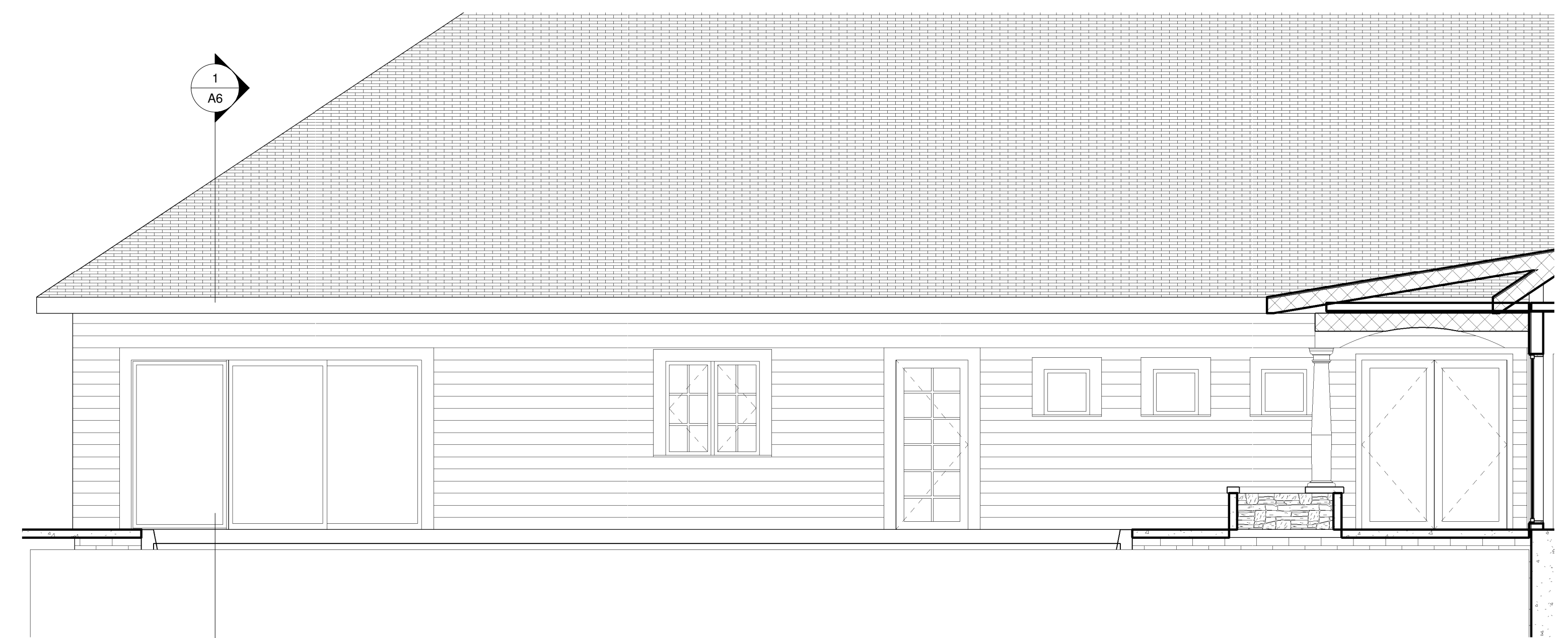


1 SOUTH EXTERIOR ELEVATION  
1/4" = 1'-0"

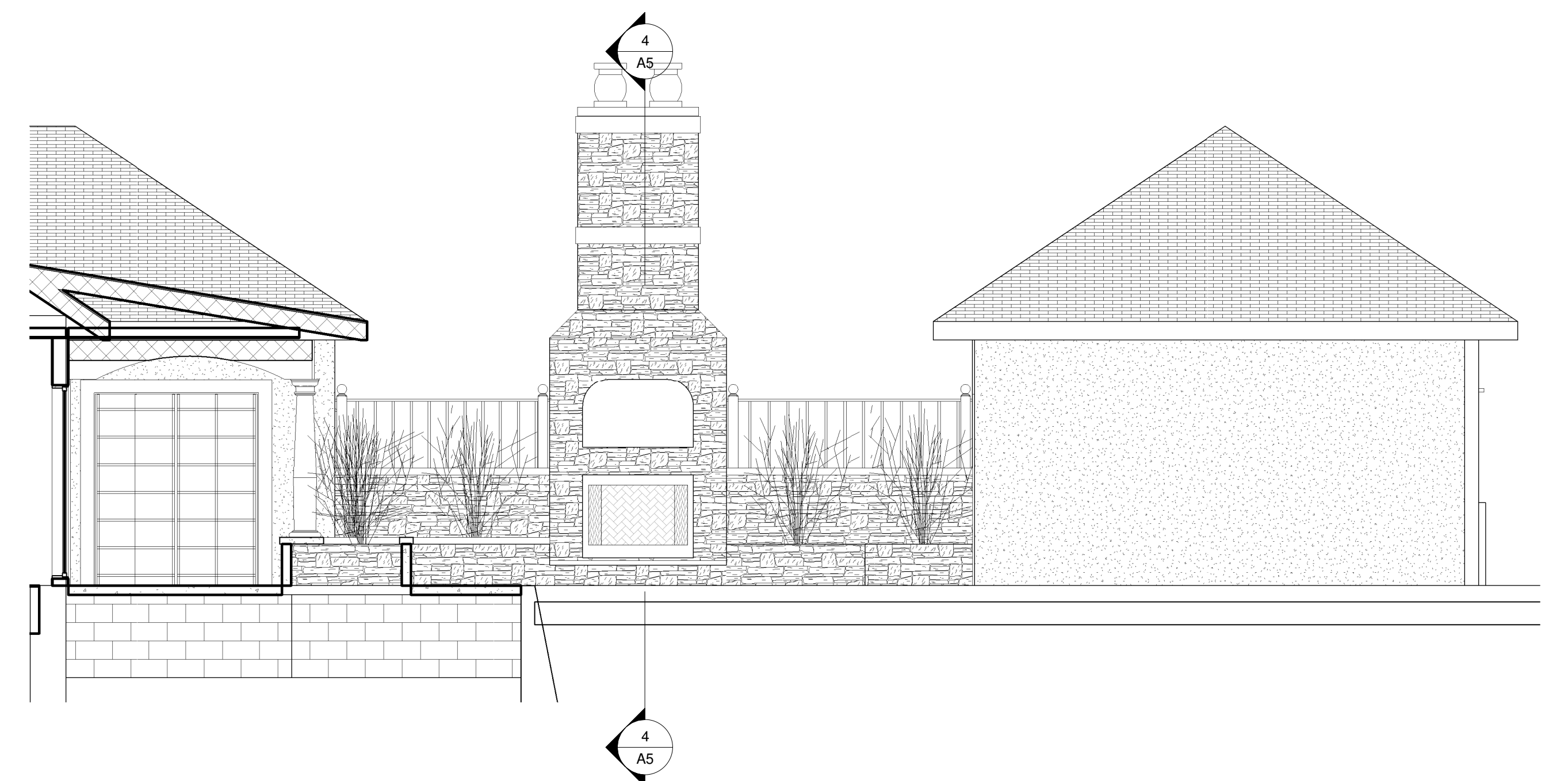


4 MAIN FLOOR PLAN  
1/8" = 1'-0"

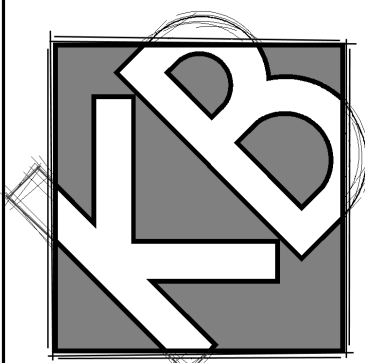
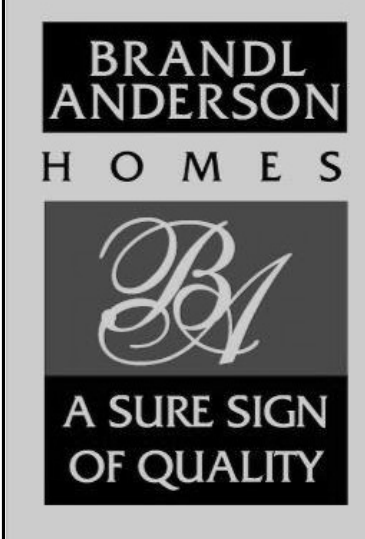
5 BASEMENT SLAB  
1/8" = 1'-0"



2 COURTYARD EAST  
1/4" = 1'-0"



3 COURTYARD WEST  
1/4" = 1'-0"



DESIGNS  
9995 WEST 69TH ST.  
SUITE 102  
EDEN PRAIRIE, MN. 55334  
PHONE: 952-826-2222  
FAX: 952-941-6515

REO RAJ PROJECT

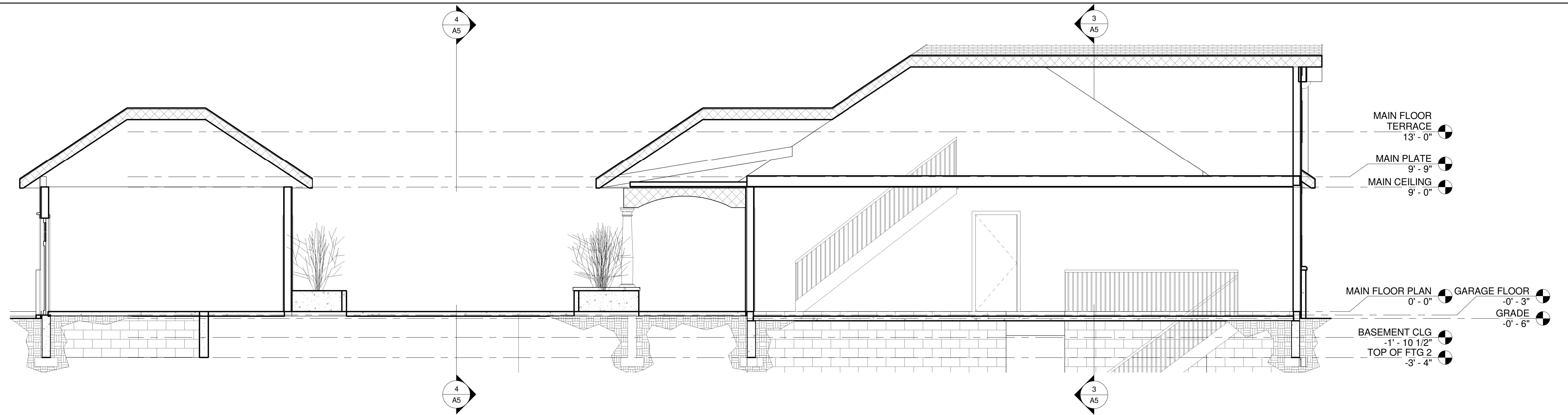
IN THE SW 1/4 OF SEC. 7-17-24,  
HENNEPIN COUNTY, MINNESOTA

JOB NO: 2004

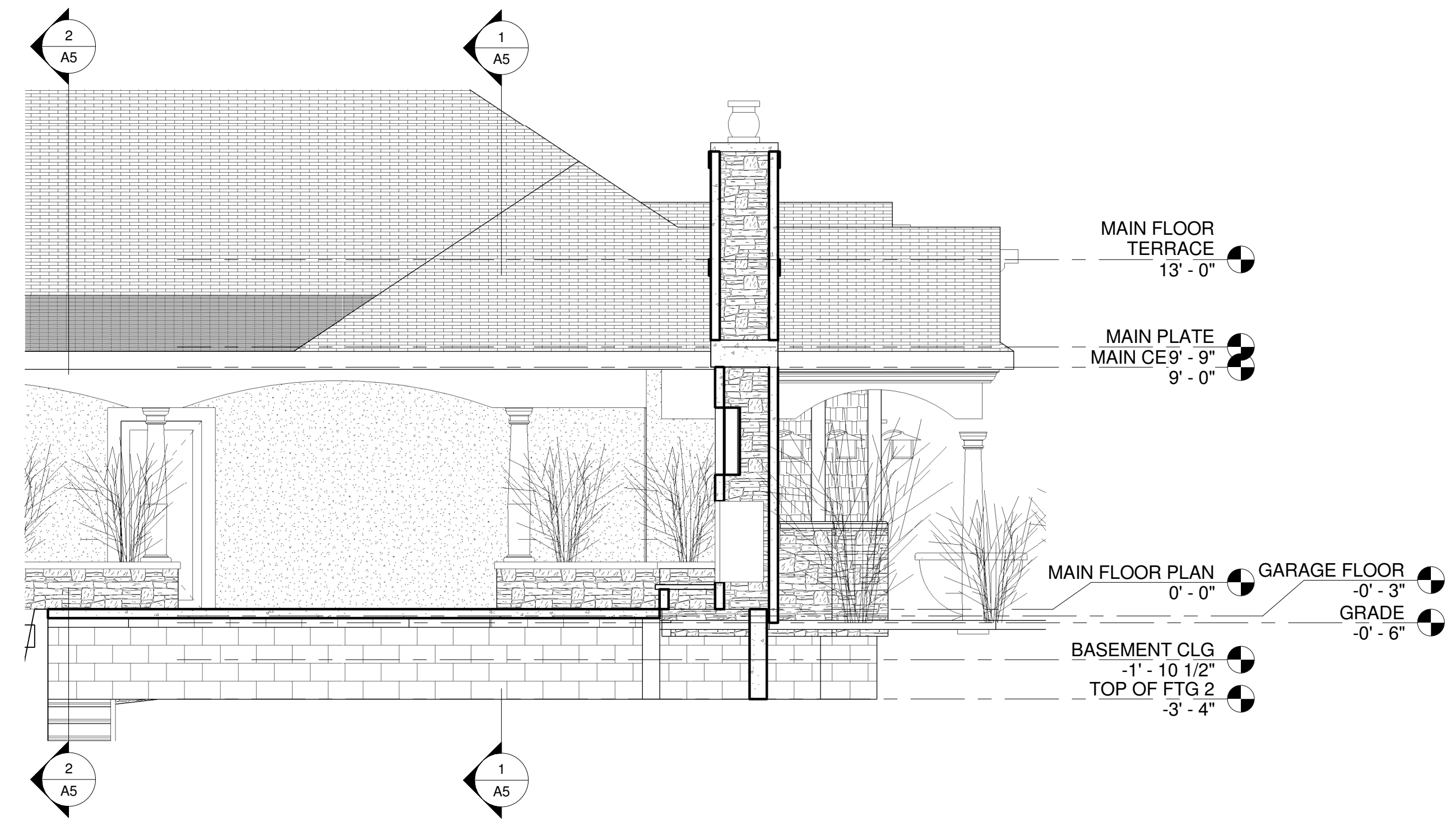
SHEET NO:

**A5**

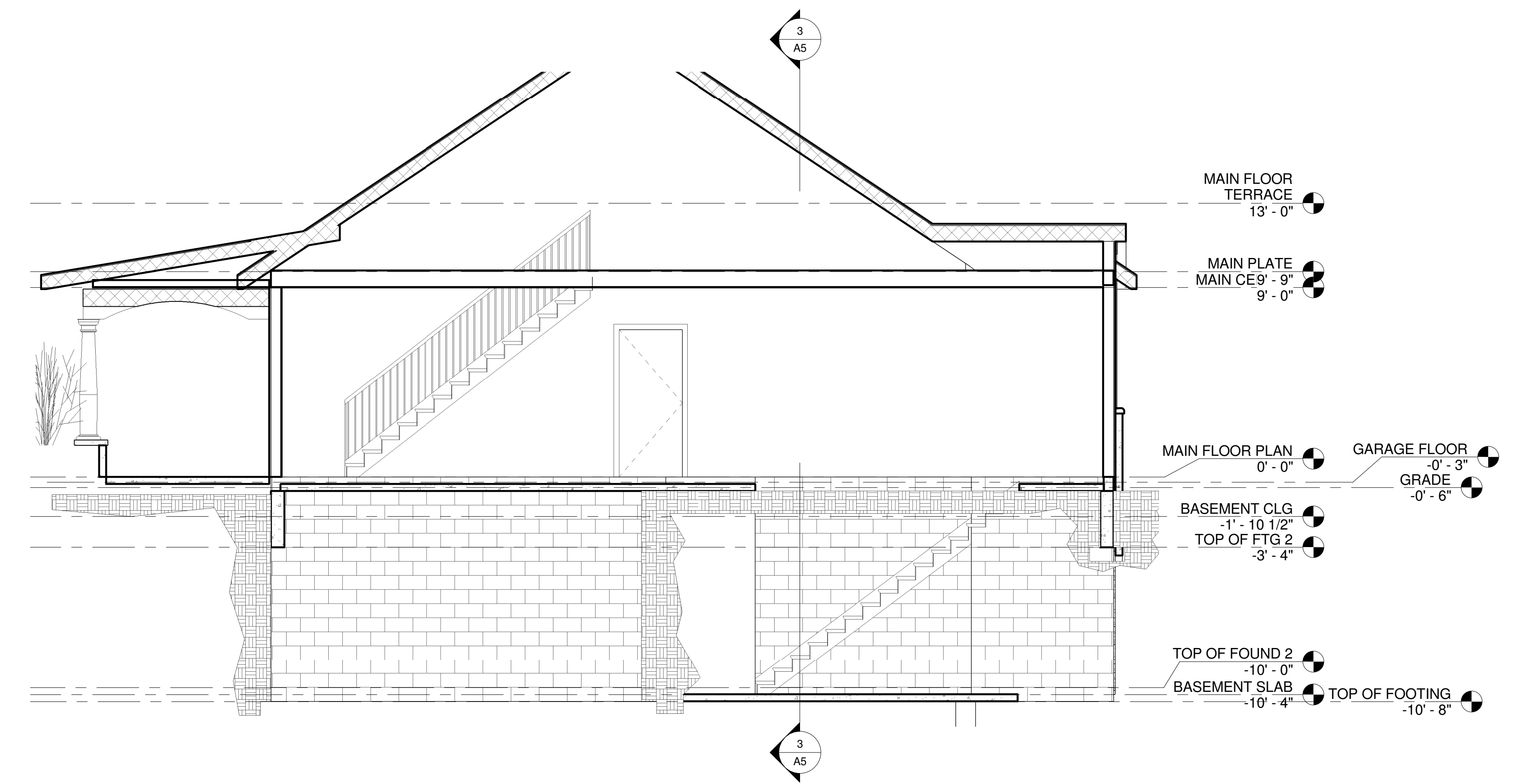
SECTIONS



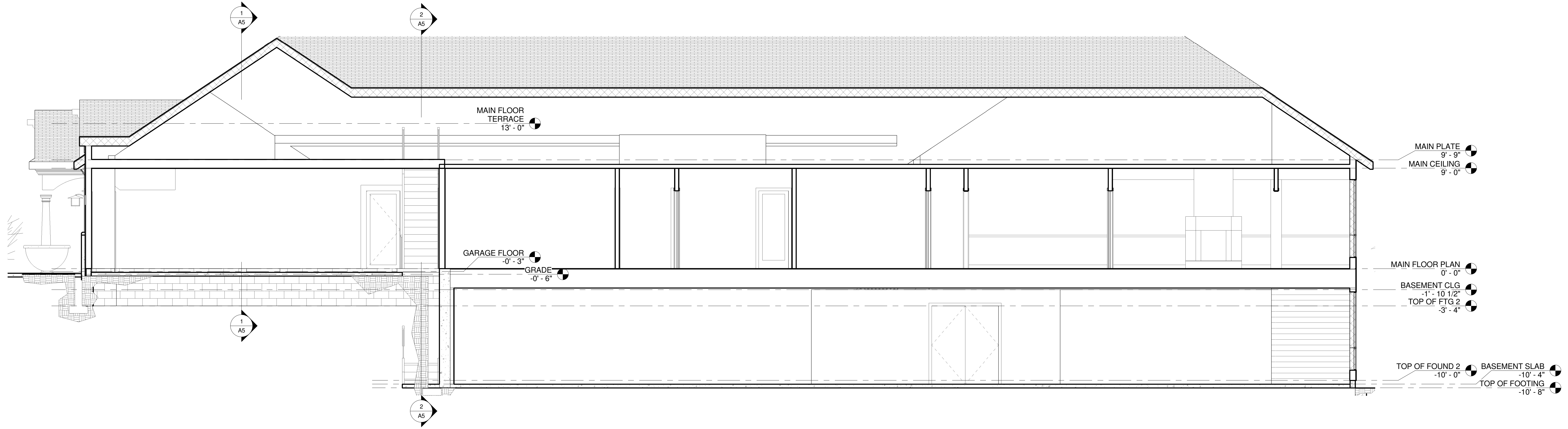
1 BUILDING SECTION AT POOL ROOM-GARAGE  
1/4" = 1'-0"



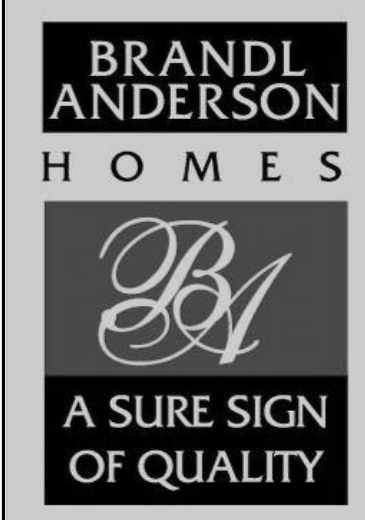
4 BUILDING SECTION AT POOL ROOM  
1/4" = 1'-0"



2 BUILDING SECTION AT GARAGE STAIR  
1/4" = 1'-0"



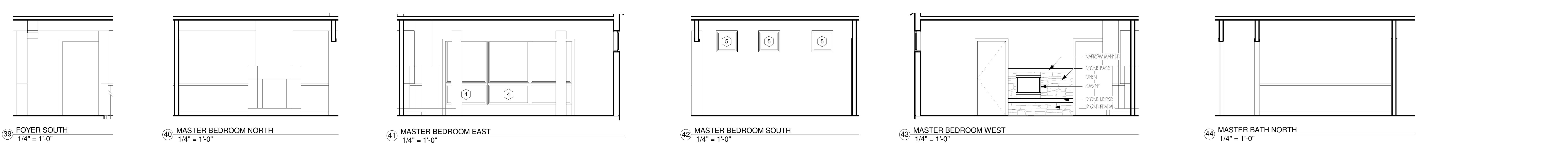
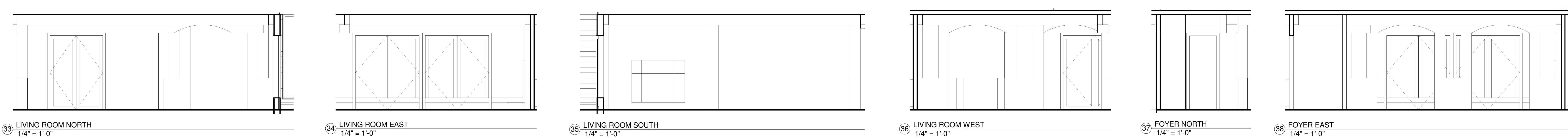
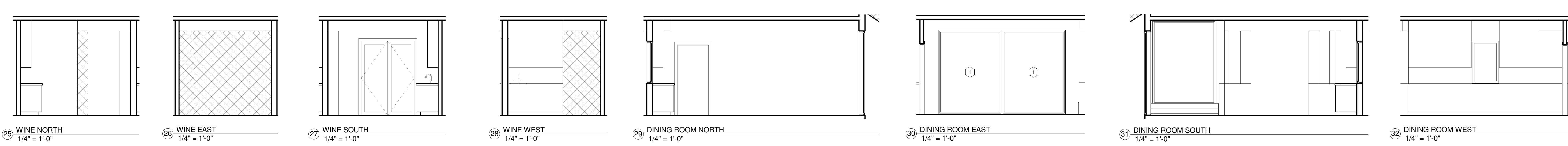
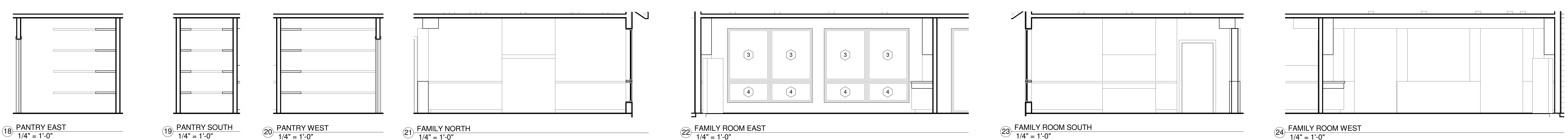
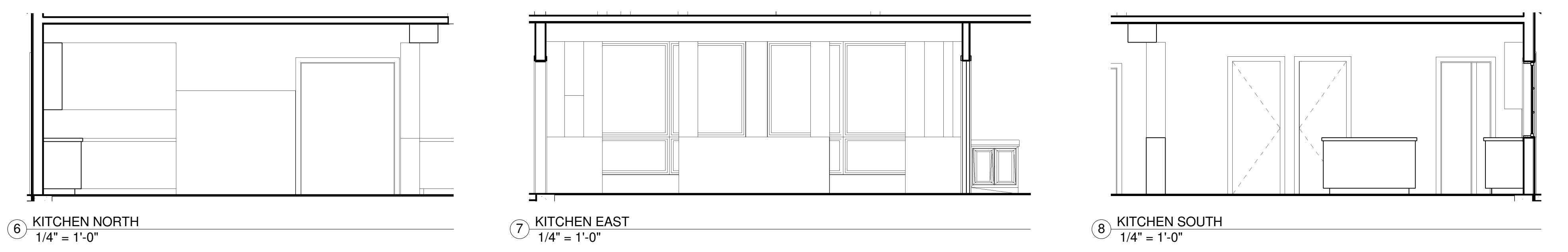
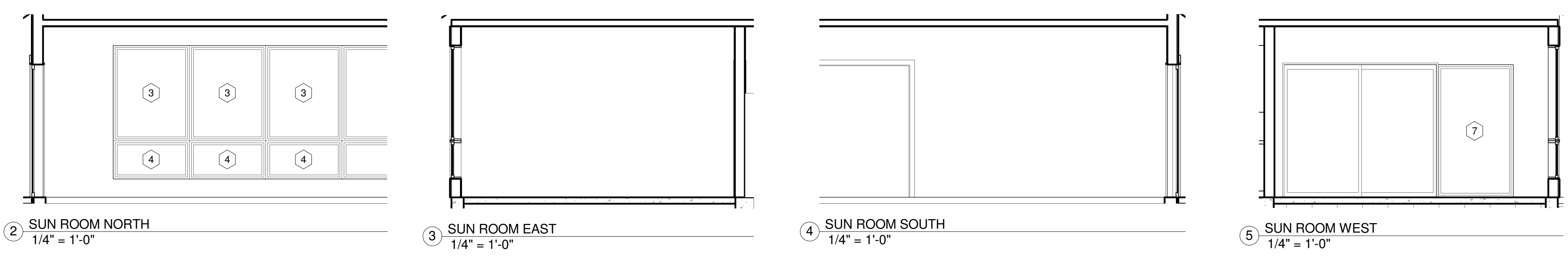
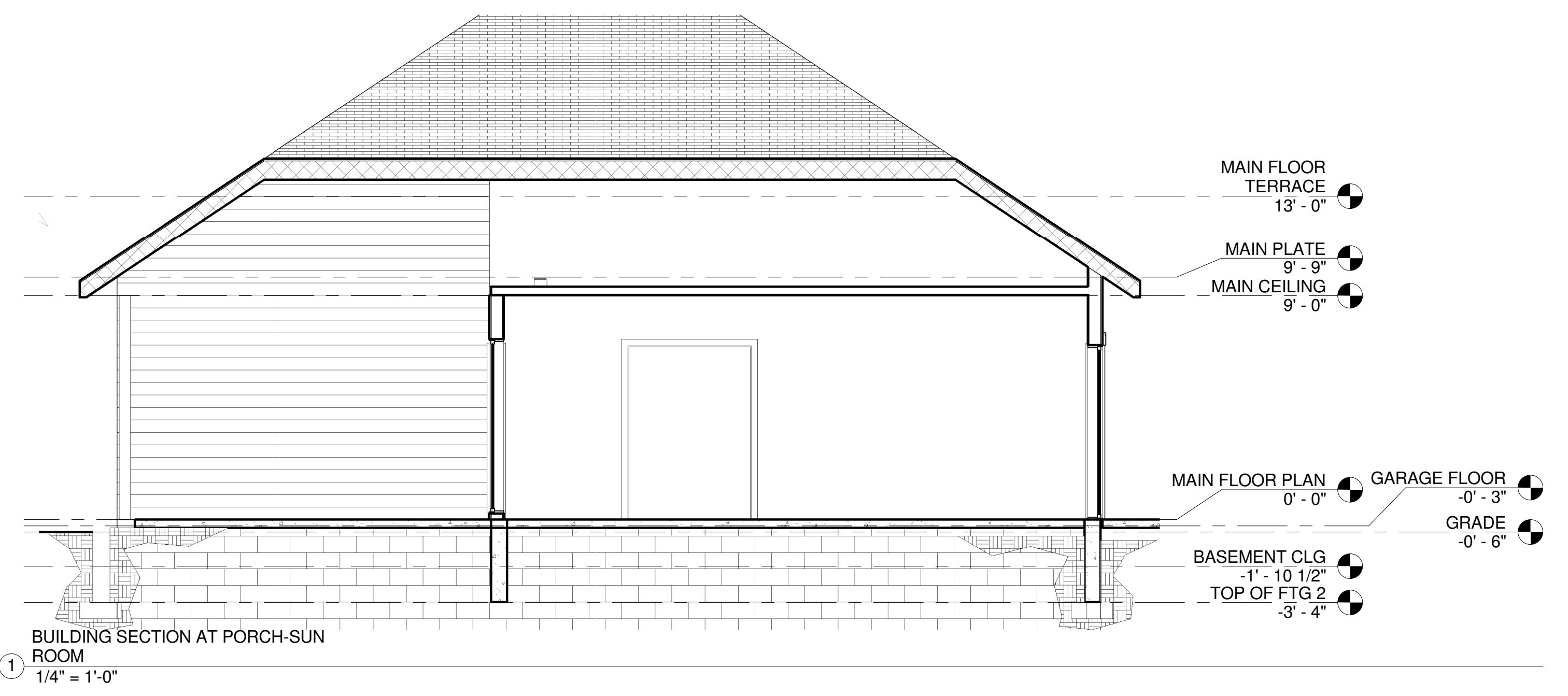
3 BUILDING SECTION EAST-WEST  
1/4" = 1'-0"

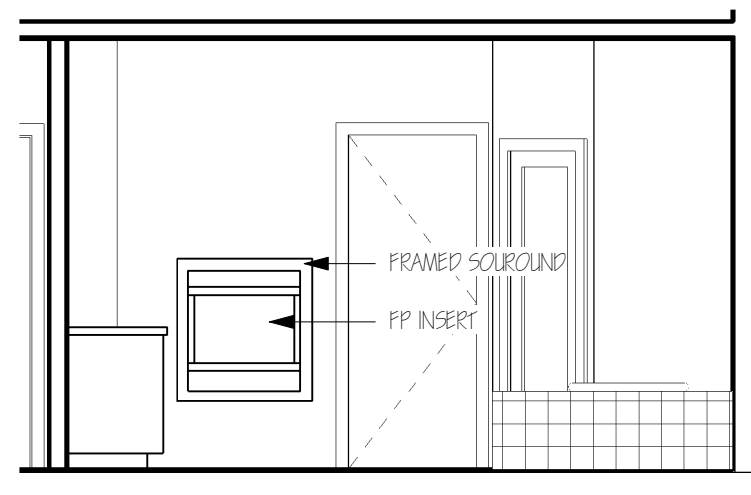


REO RAJ PROJECT  
IN THE SW 1/4 OF SEC. 7-17-24,  
HENNEPIN COUNTY, MINNESOTA

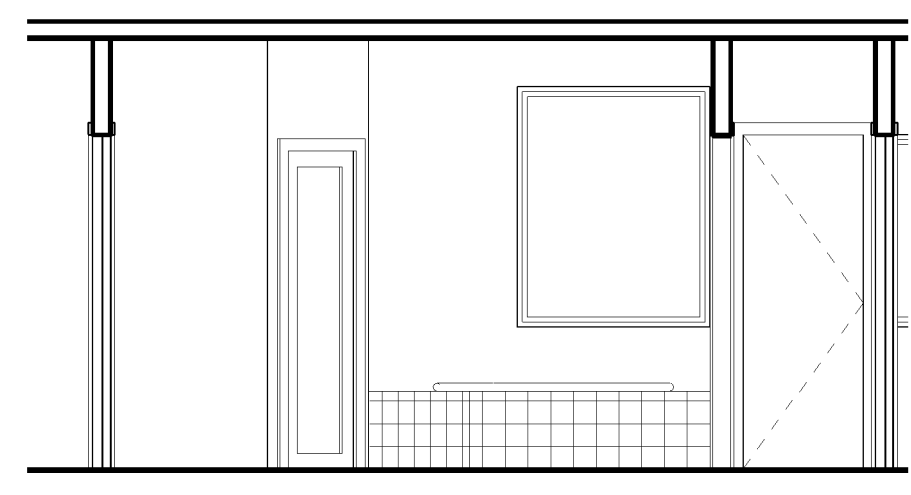
JOB NO: 2004

SHEET NO:  
**A6**  
SECTION -  
ELEVATIONS

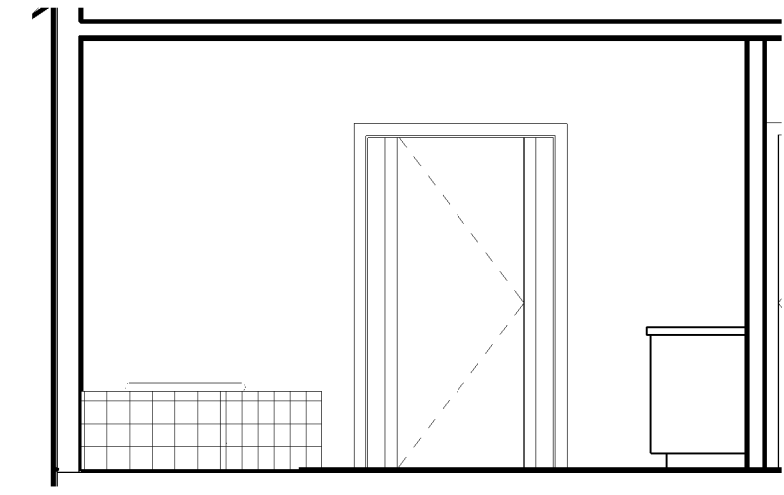




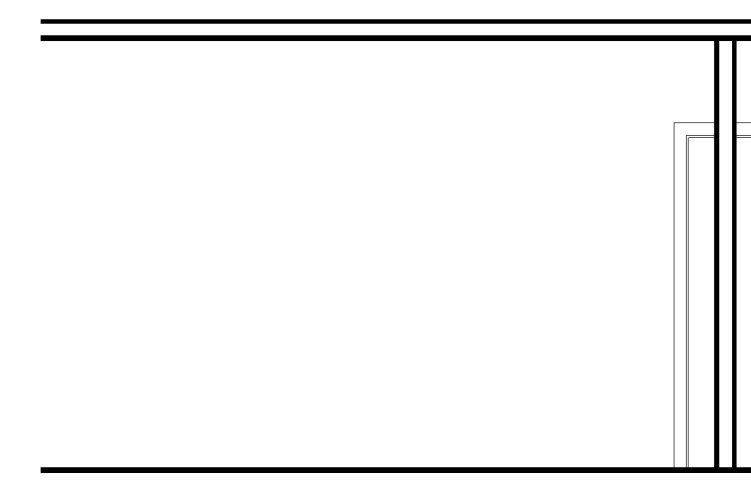
1 MASTER BATH EAST  
1/4" = 1'-0"



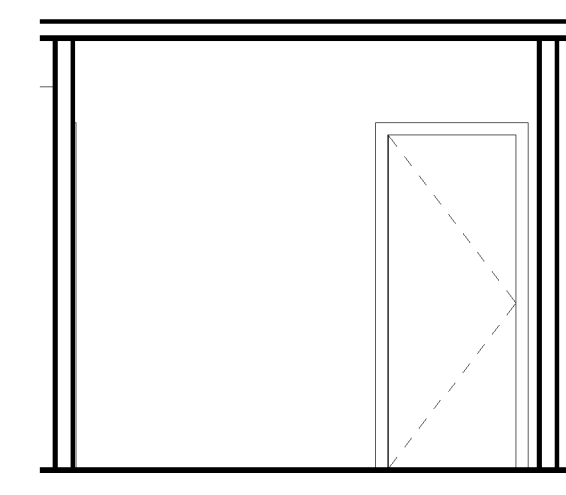
2 MASTER BATH SOUTH  
1/4" = 1'-0"



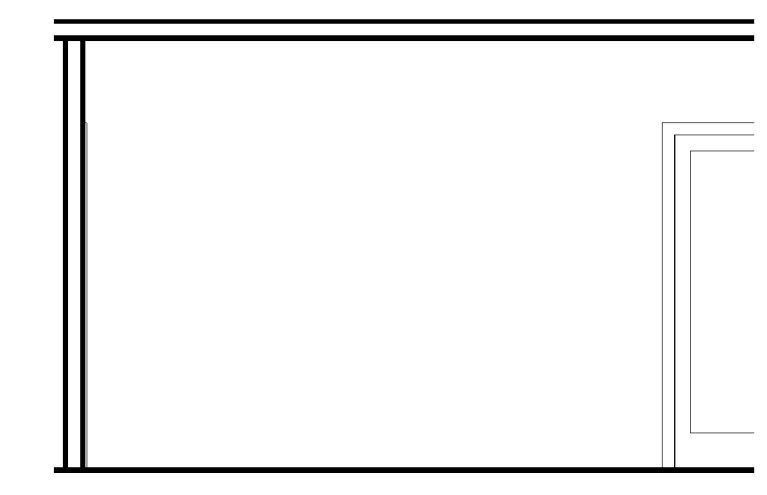
3 MASTER BATH WEST  
1/4" = 1'-0"



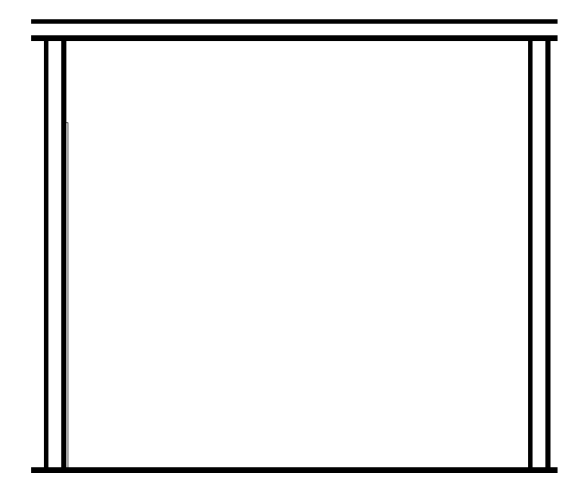
4 MASTER CLOSET 1 NORTH  
1/4" = 1'-0"



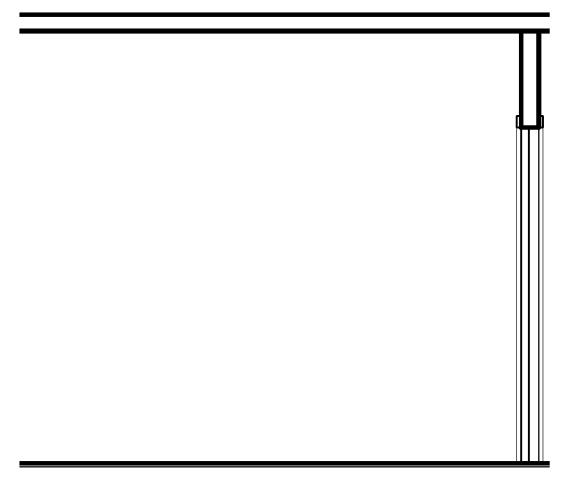
5 MASTER CLOSET 1 EAST  
1/4" = 1'-0"



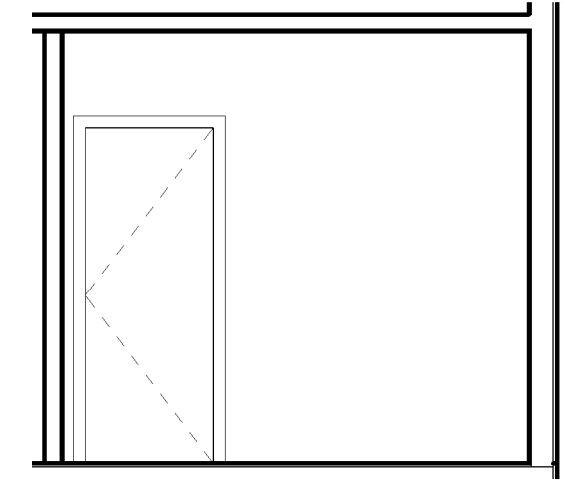
6 MASTER CLOSET 1 SOUTH  
1/4" = 1'-0"



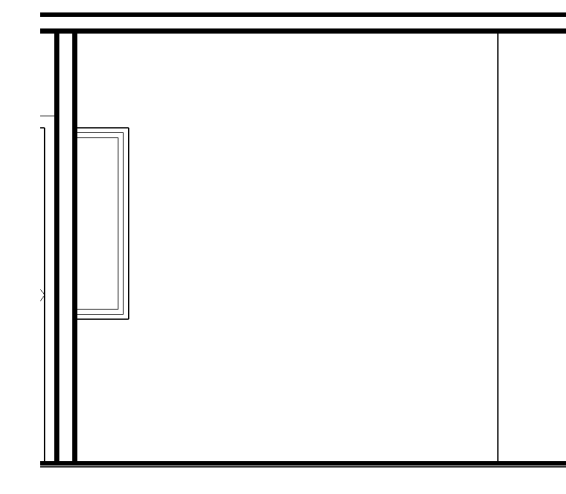
7 MASTER CLOSET 1 WEST  
1/4" = 1'-0"



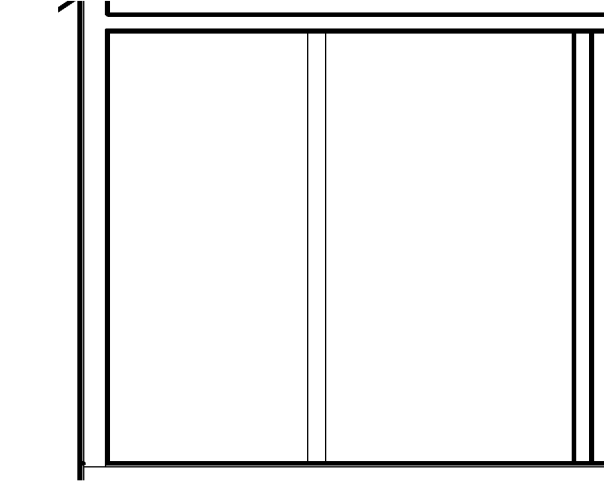
8 MASTER CLOSET 2 NORTH  
1/4" = 1'-0"



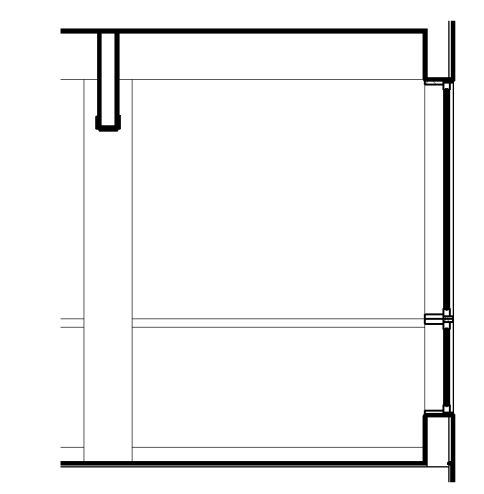
9 MASTER CLOSET 2 EAST  
1/4" = 1'-0"



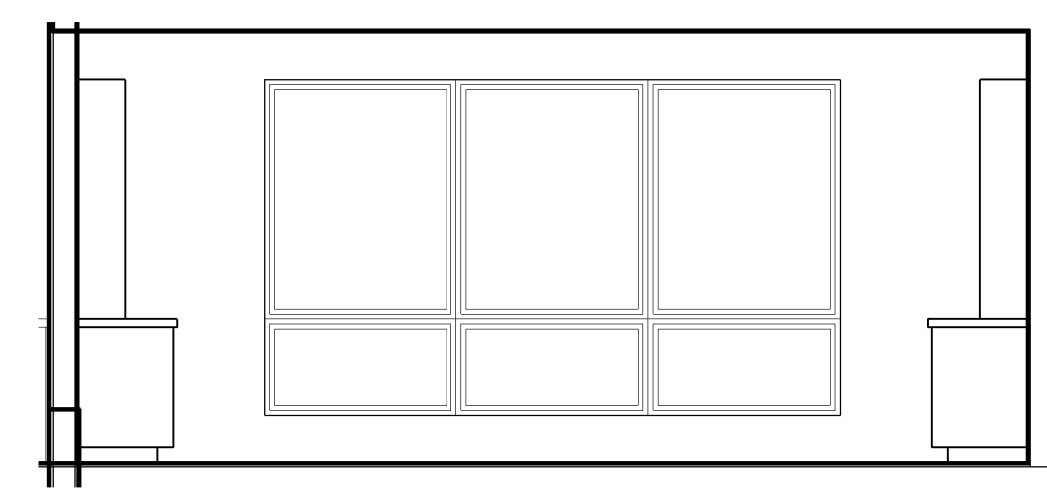
10 MASTER CLOSET 2 SOUTH  
1/4" = 1'-0"



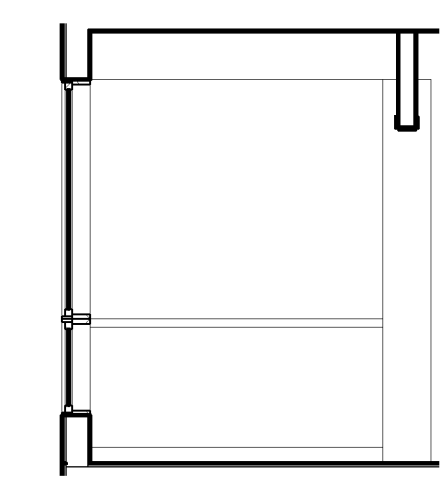
11 MASTER CLOSET 2 WEST  
1/4" = 1'-0"



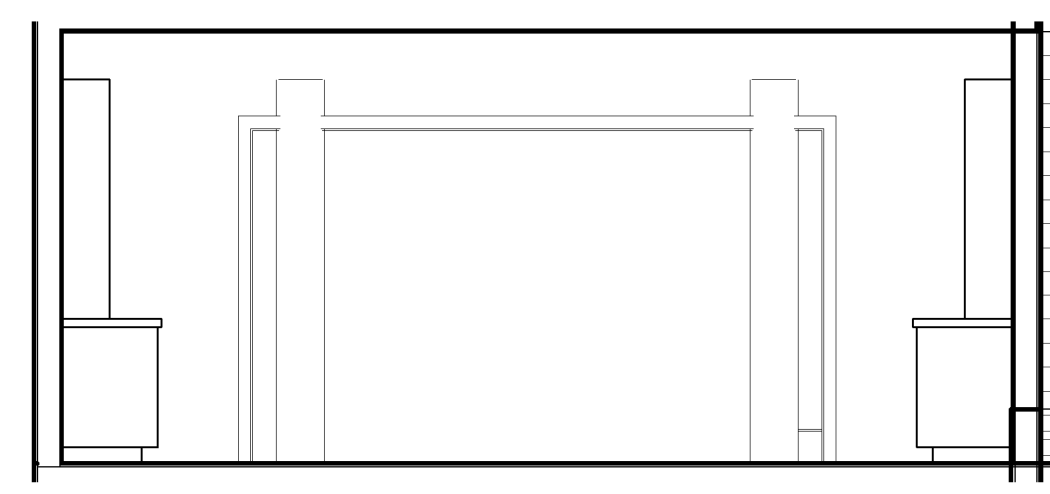
12 MASTER SITTING NORTH  
1/4" = 1'-0"



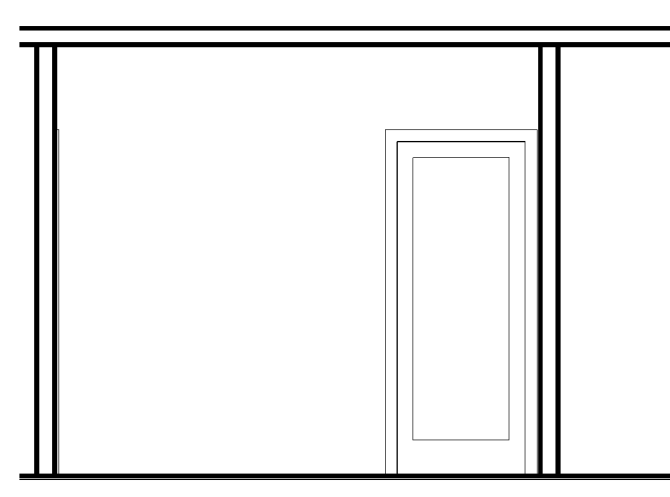
13 MASTER SITTING EAST  
1/4" = 1'-0"



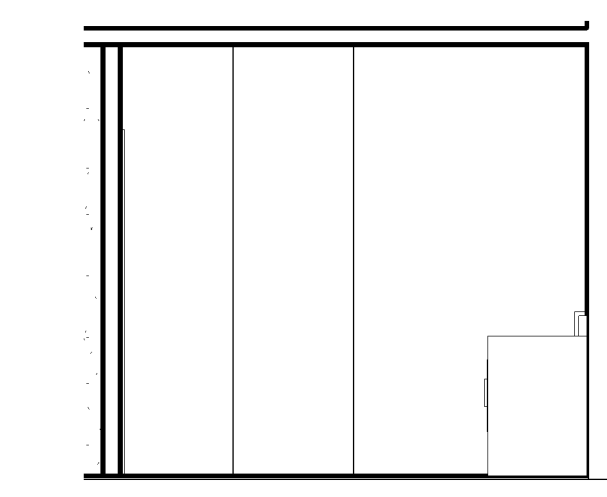
14 MASTER SITTING SOUTH  
1/4" = 1'-0"



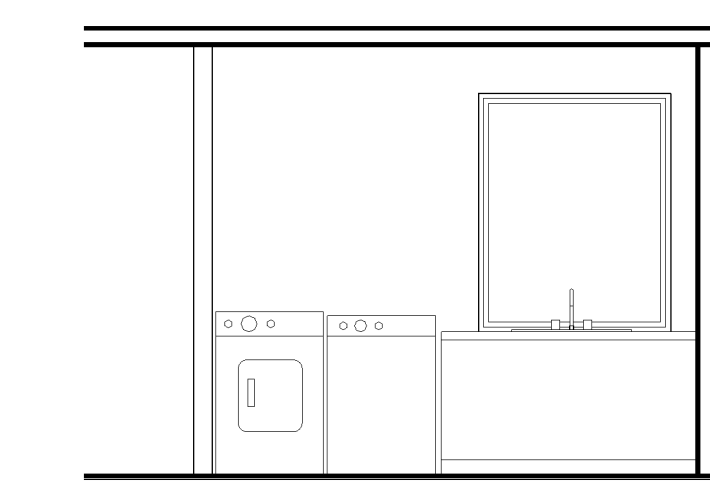
15 MASTER SITTING WEST  
1/4" = 1'-0"



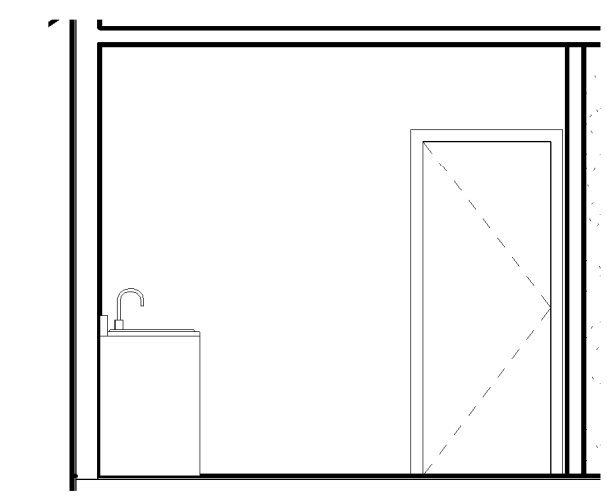
16 LAUNDRY NORTH  
1/4" = 1'-0"



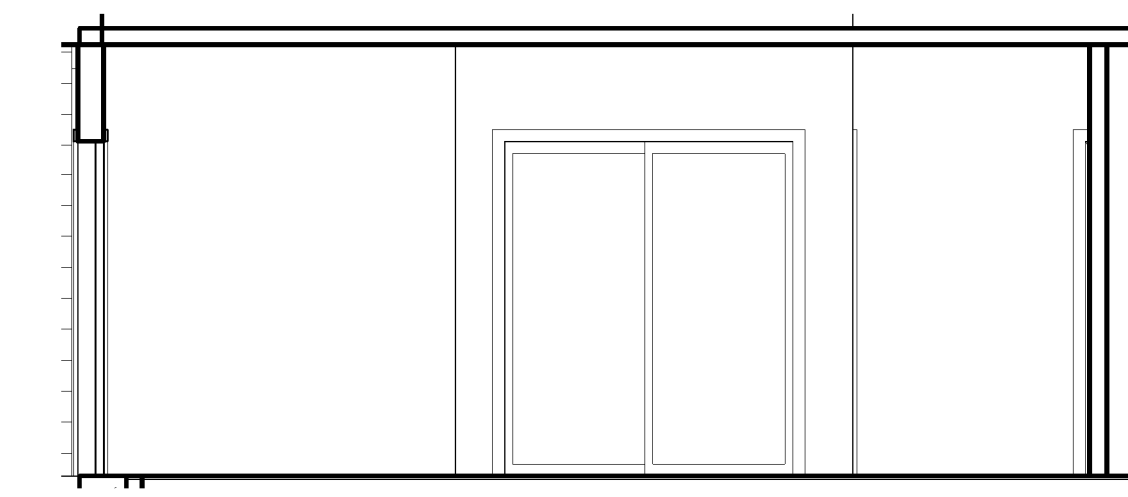
17 LAUNDRY EAST  
1/4" = 1'-0"



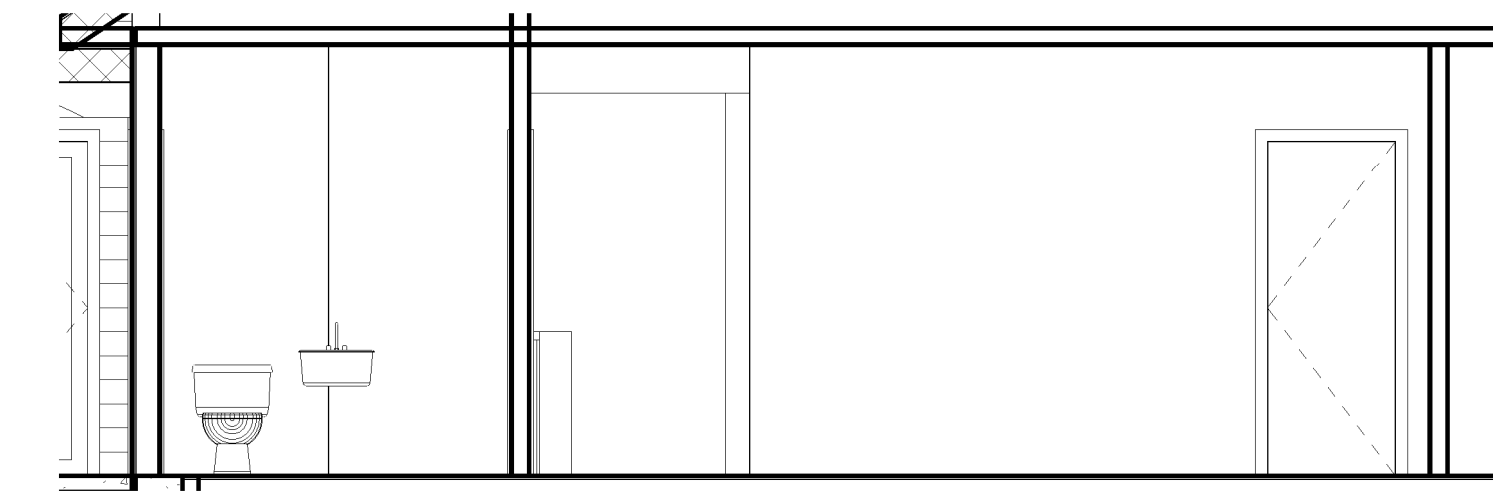
18 LAUNDRY SOUTH  
1/4" = 1'-0"



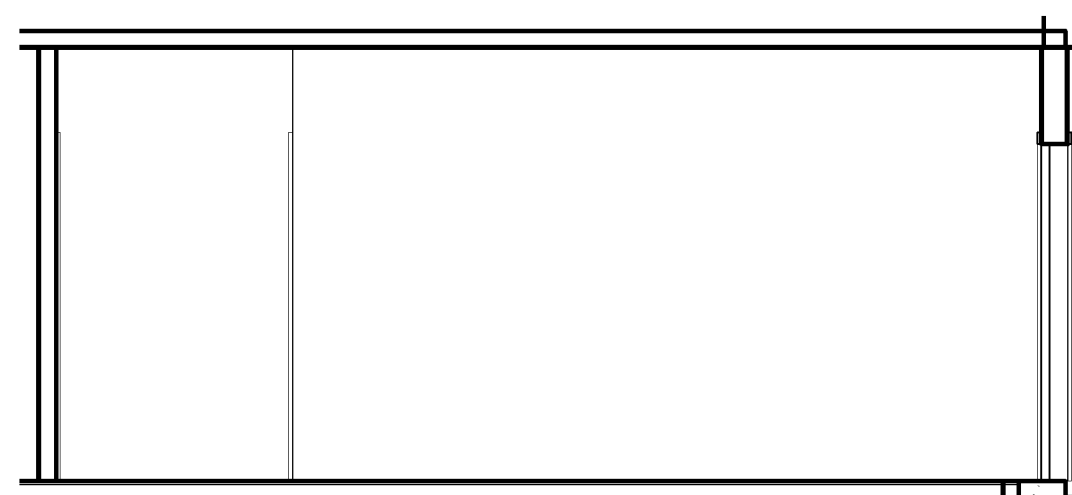
19 LAUNDRY WEST  
1/4" = 1'-0"



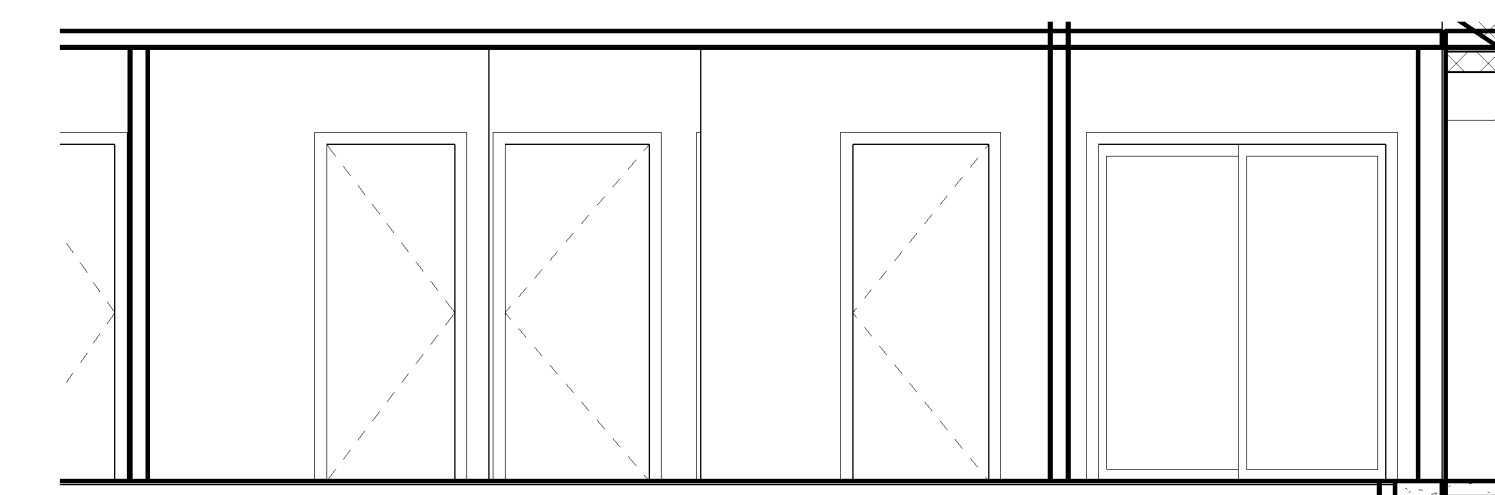
20 MUD ROOM NORTH  
1/4" = 1'-0"



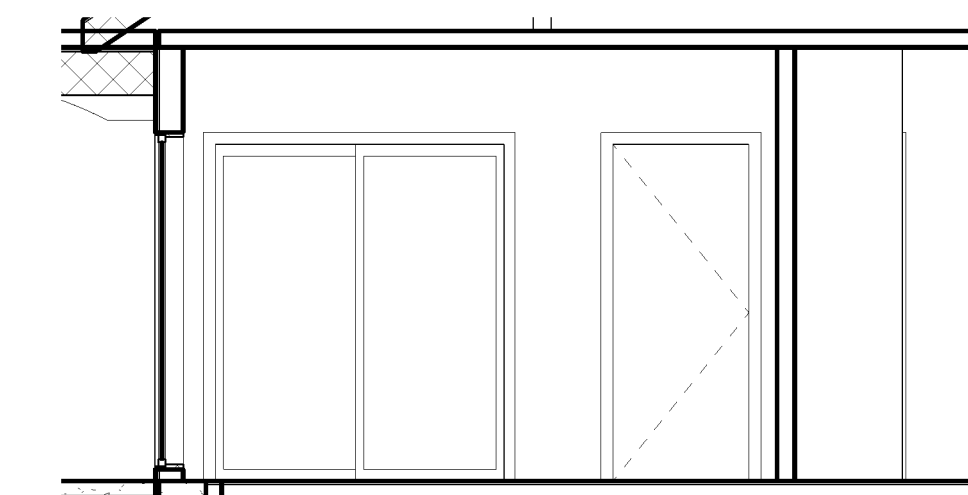
21 MUD ROOM EAST  
1/4" = 1'-0"



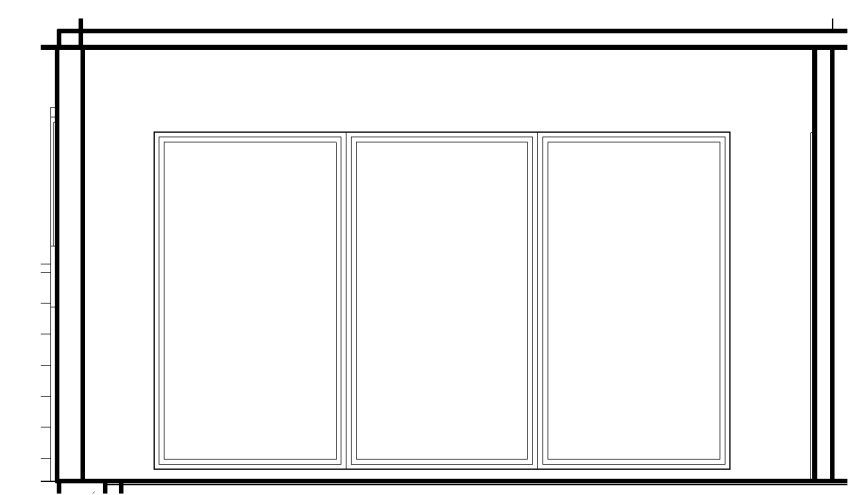
22 MUD ROOM SOUTH  
1/4" = 1'-0"



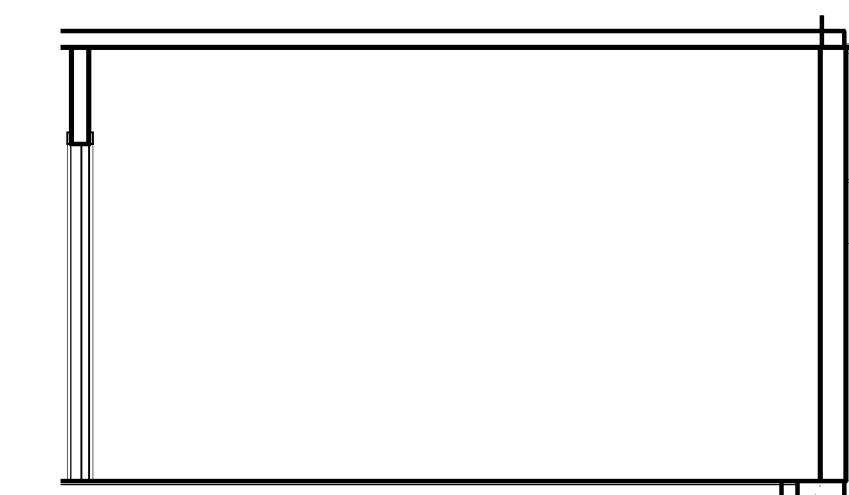
23 MUD ROOM WEST  
1/4" = 1'-0"



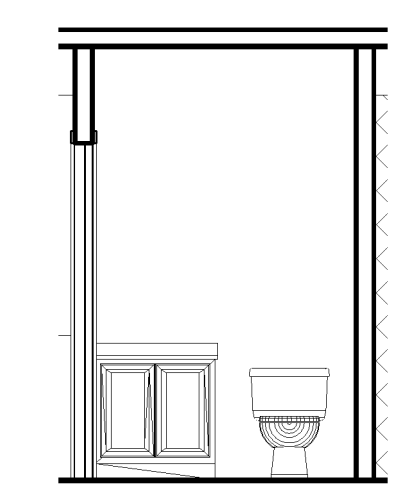
24 GUEST BEDROOM EAST  
1/4" = 1'-0"



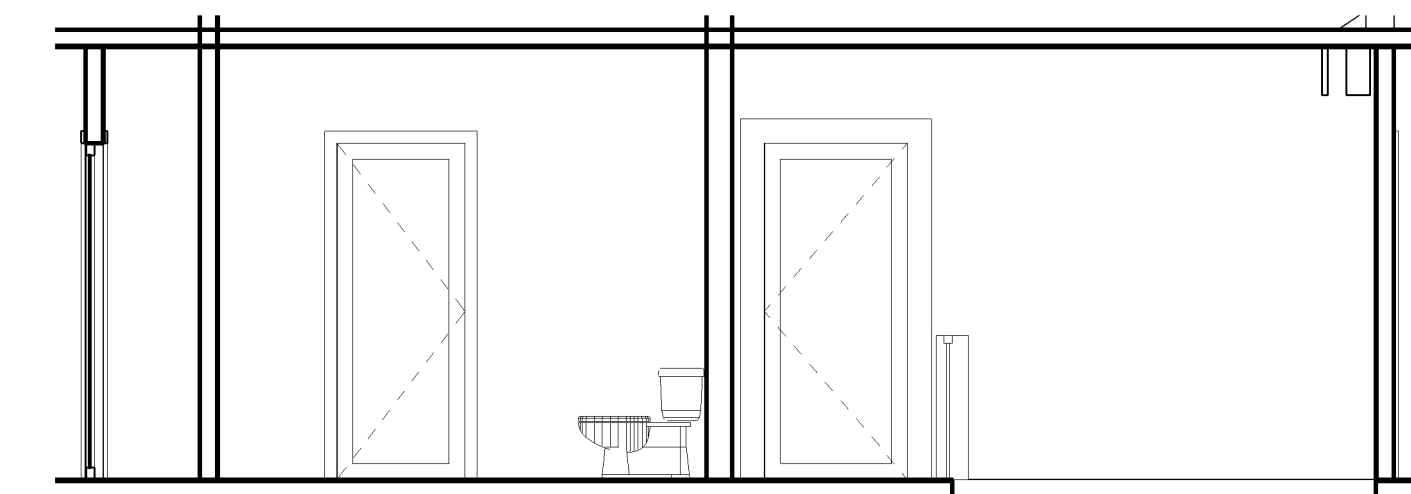
25 GUEST BEDROOM NORTH  
1/4" = 1'-0"



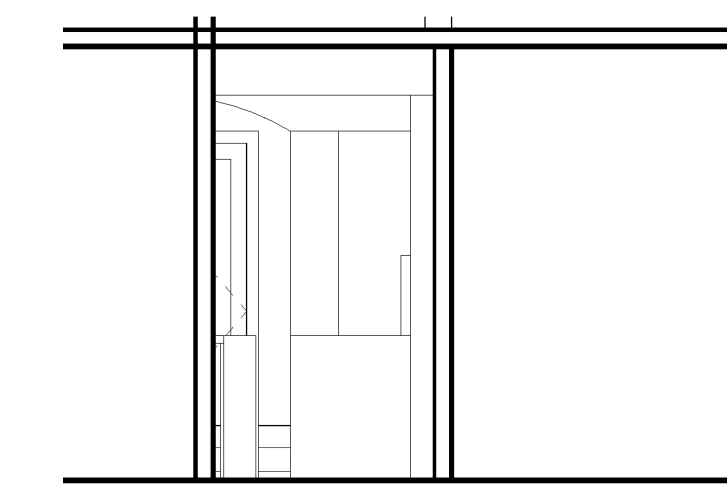
26 GUEST BEDROOM SOUTH  
1/4" = 1'-0"



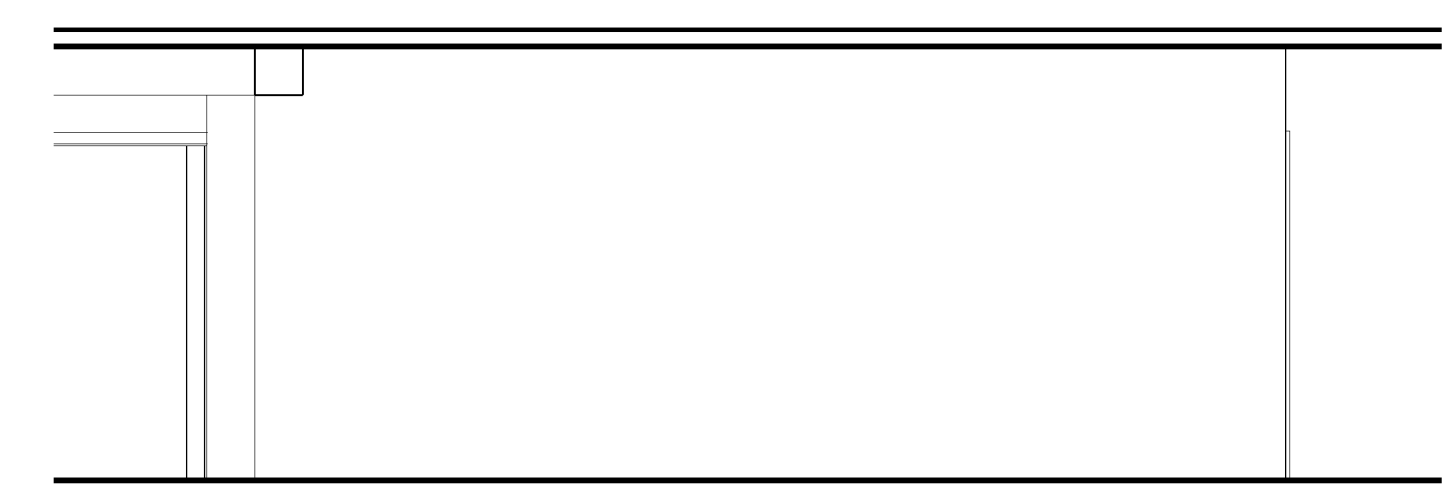
34 POWDER ROOM EAST  
1/4" = 1'-0"



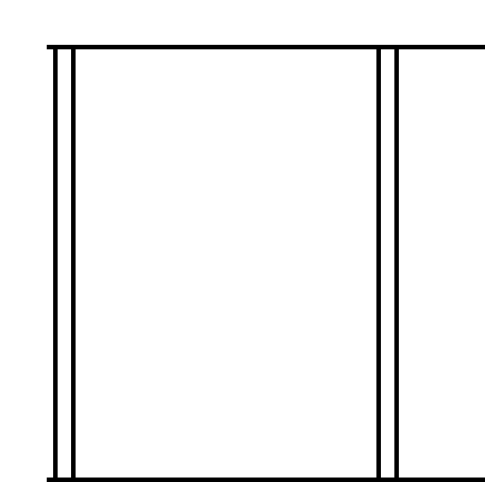
35 STAIR/HALL NORTH  
1/4" = 1'-0"



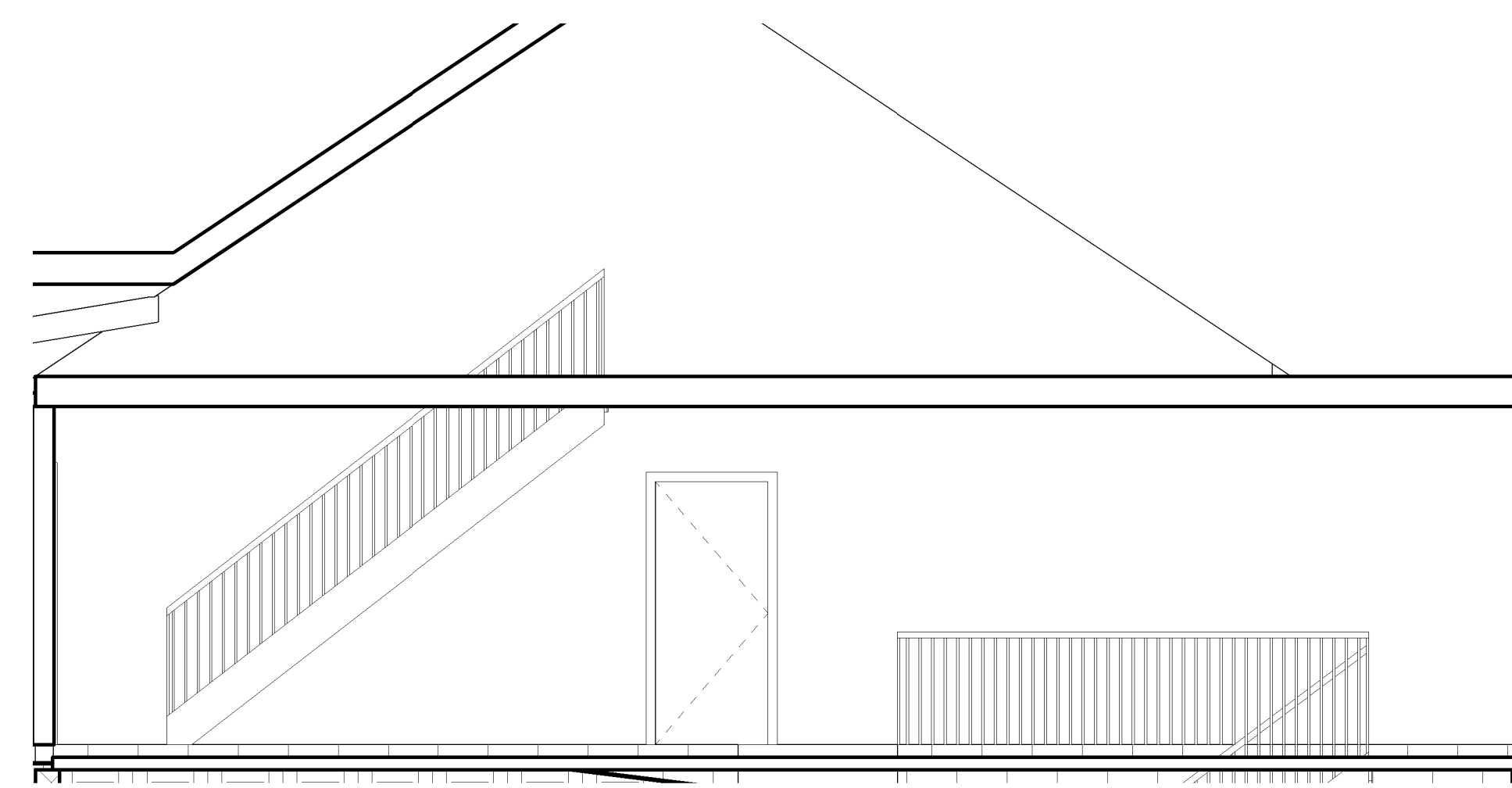
36 STAIR/HALL EAST  
1/4" = 1'-0"



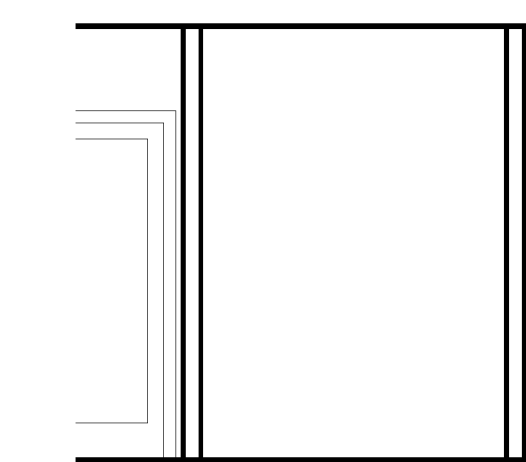
37 STAIR/HALL SOUTH  
1/4" = 1'-0"



39 GUEST BATH NORTH  
1/4" = 1'-0"



38 GARAGE EAST  
1/4" = 1'-0"



40 GUEST BATH SOUTH  
1/4" = 1'-0"

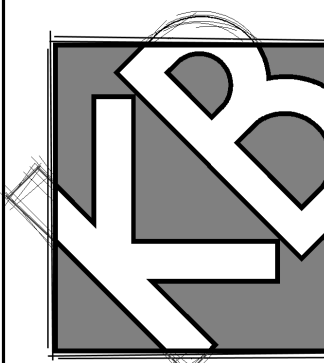


Door Schedule										
Room #	Mark	Type	Count	Height	Width	Description	Comments	Finish	Frame Type	Level
	40.1	16X7	1	7'-0"	16'-0"					BASEMENT SLAB
	40.3	16X7	1	7'-0"	16'-0"					BASEMENT SLAB
	40.5	16X7	1	7'-0"	16'-0"					BASEMENT SLAB
	40.7	72" x 84"	1	7'-0"	6'-0"					BASEMENT SLAB
	04	72" x 84"	1	7'-0"	6'-0"					BASEMENT SLAB
	05	72" x 84"	1	7'-0"	6'-0"					BASEMENT SLAB
	09	72" x 84"	1	7'-0"	6'-0"					MAIN FLOOR PLAN
	10	36" x 84"	1	7'-0"	3'-0"					MAIN FLOOR PLAN
001	01	84" x 84" 2	1	7'-0"	8'-0"	ANDERSON SLIDING ASSEMBLY				MAIN FLOOR PLAN
002	02	84" x 84" 2	1	7'-0"	8'-0"	ANDERSON SLIDING ASSEMBLY				MAIN FLOOR PLAN
003	03.1	30" x 84"	1	7'-0"	2'-6"					MAIN FLOOR PLAN
003	03.2	36" x 84"	1	7'-0"	3'-0"					MAIN FLOOR PLAN
006	06	30" x 84"	1	7'-0"	2'-6"					MAIN FLOOR PLAN
010	10.1	48" x 82"	1	7'-0"	4'-0"					MAIN FLOOR PLAN
010	10.2	72" x 84"	1	7'-0"	6'-0"					MAIN FLOOR PLAN
011	11.1	72" x 84"	1	7'-0"	6'-0"					MAIN FLOOR PLAN
011	11.2	72" x 84"	1	7'-0"	6'-0"					MAIN FLOOR PLAN
011	11.3	60" x 84"	1	7'-0"	5'-0"					MAIN FLOOR PLAN
015	15	60" x 84"	1	7'-0"	5'-0"					MAIN FLOOR PLAN
016	16.1	32" x 84"	1	7'-0"	2'-8"					MAIN FLOOR PLAN
016	16.2	24" x 80"	1	6'-8"	2'-0"	GLASS SHOWER DOOR				MAIN FLOOR PLAN
017	17	30" x 84"	1	7'-0"	2'-6"					MAIN FLOOR PLAN
019	19	32" x 84"	1	7'-0"	2'-8"					MAIN FLOOR PLAN
020	20	32" x 84"	1	7'-0"	2'-8"					MAIN FLOOR PLAN
021	13	32" x 84"	1	7'-0"	2'-8"					MAIN FLOOR PLAN
021	16	32" x 84"	1	7'-0"	2'-8"					MAIN FLOOR PLAN
023	23.1	32" x 84"	1	7'-0"	2'-8"					MAIN FLOOR PLAN
023	23.2	32" x 84"	1	7'-0"	2'-8"	POCKER DOOR				MAIN FLOOR PLAN
024	24	30" x 84"	1	7'-0"	2'-6"					MAIN FLOOR PLAN
025	25.1	34" x 84"	1	7'-0"	2'-10"					MAIN FLOOR PLAN
025	12	72" x 84"	1	7'-0"	6'-0"					MAIN FLOOR PLAN
026	26.1	36" x 84"	1	7'-0"	3'-0"					MAIN FLOOR PLAN
027	027	32" x 84"	1	7'-0"	2'-8"					MAIN FLOOR PLAN
028	28.1	7-0 X 8-0	1	7'-0"	8'-0"					MAIN FLOOR PLAN
028	28.2	7-0 X 8-0	1	7'-0"	8'-0"					MAIN FLOOR PLAN
028	28.3	7-0 X 8-0	1	7'-0"	8'-0"					MAIN FLOOR PLAN
028	11	36" x 84"	1	7'-0"	3'-0"					MAIN FLOOR PLAN
032	32.2	7-0 X 8-0	1	7'-0"	8'-0"					GARAGE FLOOR
032	08	36" x 80"	1	6'-8"	3'-0"					MAIN FLOOR PLAN
033	33	72" x 84"	1	7'-0"	6'-0"					BASEMENT SLAB
034	34	72" x 84"	1	7'-0"	6'-0"					BASEMENT SLAB
036	36.1	30" x 84"	1	7'-0"	2'-6"					BASEMENT SLAB
036	36.2	30" x 84"	1	7'-0"	2'-6"					BASEMENT SLAB
038	38	36" x 84"	1	7'-0"	3'-0"					BASEMENT SLAB

Window Schedule									
Type Mark	Type	Count	Comments	Height	Width	Head Height	Level		
8	ANDERSON P3040	1	ANDERSON 400 SERIES PICTURE UNIT	4'-0"	2'-6"	7'-0"	MAIN FLOOR PLAN		
1	ANDERSON FWH6080SS	1	ANDERSON FIXED PICTURE WINDOW	8'-0"	6'-0"	8'-0"	MAIN FLOOR PLAN		
1	ANDERSON FWH6080SS	1	ANDERSON FIXED PICTURE WINDOW	8'-0"	6'-0"	8'-0"	MAIN FLOOR PLAN		
60	24" x 24"	1	ANDERSON 400 SERIES CASEMENT WINDOW	2'-0"	2'-0"	6'-8"	MAIN FLOOR PLAN		
3	ANDERSON P4050	1	ANDERSON 400 SERIES PICTURE UNIT	5'-0"	4'-0"	8'-0"	MAIN FLOOR PLAN		
3	ANDERSON P4050	1	ANDERSON 400 SERIES PICTURE UNIT	5'-0"	4'-0"	8'-0"	MAIN FLOOR PLAN		
3	ANDERSON P4050	1	ANDERSON 400 SERIES PICTURE UNIT	5'-0"	4'-0"	8'-0"	MAIN FLOOR PLAN		
4	ANDERSON A41	1	ANDERSON 400 SERIES AWNING WINDOW	2'-0"	4'-0"	3'-0"	MAIN FLOOR PLAN		
4	ANDERSON A41	1	ANDERSON 400 SERIES AWNING WINDOW	2'-0"	4'-0"	3'-0"	MAIN FLOOR PLAN		
4	ANDERSON A41	1	ANDERSON 400 SERIES AWNING WINDOW	2'-0"	4'-0"	3'-0"	MAIN FLOOR PLAN		
4	ANDERSON A41	1	ANDERSON 400 SERIES AWNING WINDOW	2'-0"	4'-0"	3'-0"	MAIN FLOOR PLAN		
3	ANDERSON P4050	1	ANDERSON 400 SERIES PICTURE UNIT	5'-0"	4'-0"	8'-0"	MAIN FLOOR PLAN		
3	ANDERSON P4050	1	ANDERSON 400 SERIES PICTURE UNIT	5'-0"	4'-0"	8'-0"	MAIN FLOOR PLAN		
4	ANDERSON A41	1	ANDERSON 400 SERIES AWNING WINDOW	2'-0"	4'-0"	3'-0"	MAIN FLOOR PLAN		
4	ANDERSON A41	1	ANDERSON 400 SERIES AWNING WINDOW	2'-0"	4'-0"	3'-0"	MAIN FLOOR PLAN		
5	ANDERSON A21	1	ANDERSON 400 SERIES AWNING WINDOW	2'-0"	2'-0"	8'-0"	MAIN FLOOR PLAN		
5	ANDERSON A21	1	ANDERSON 400 SERIES AWNING WINDOW	2'-0"	2'-0"	8'-0"	MAIN FLOOR PLAN		
5	ANDERSON A21	1	ANDERSON 400 SERIES AWNING WINDOW	2'-0"	2'-0"	8'-0"	MAIN FLOOR PLAN		
6	ANDERSON C14	1	ANDERSON 400 SERIES CASEMENT WINDOW	4'-0"	2'-0"	7'-0"	MAIN FLOOR PLAN		
3	ANDERSON P4050	1	ANDERSON 400 SERIES PICTURE UNIT	5'-0"	4'-0"	8'-0"	MAIN FLOOR PLAN		
3	ANDERSON P4050	1	ANDERSON 400 SERIES PICTURE UNIT	5'-0"	4'-0"	8'-0"	MAIN FLOOR PLAN		
3	ANDERSON P4050	1	ANDERSON 400 SERIES PICTURE UNIT	5'-0"	4'-0"	8'-0"	MAIN FLOOR PLAN		
4	ANDERSON A41	1	ANDERSON 400 SERIES AWNING WINDOW	2'-0"	4'-0"	3'-0"	MAIN FLOOR PLAN		
4	ANDERSON A41	1	ANDERSON 400 SERIES AWNING WINDOW	2'-0"	4'-0"	3'-0"	MAIN FLOOR PLAN		
5	ANDERSON A21	1	ANDERSON 400 SERIES AWNING WINDOW	2'-0"	2'-0"	8'-0"	MAIN FLOOR PLAN		
5	ANDERSON A21	1	ANDERSON 400 SERIES AWNING WINDOW	2'-0"	2'-0"	8'-0"	MAIN FLOOR PLAN		
6	ANDERSON C14	1	ANDERSON 400 SERIES CASEMENT WINDOW	4'-0"	2'-0"	7'-0"	MAIN FLOOR PLAN		
3	ANDERSON P4050	1	ANDERSON 400 SERIES PICTURE UNIT	5'-0"	4'-0"	8'-0"	MAIN FLOOR PLAN		
3	ANDERSON P4050	1	ANDERSON 400 SERIES PICTURE UNIT	5'-0"	4'-0"	8'-0"	MAIN FLOOR PLAN		
3	ANDERSON P4050	1	ANDERSON 400 SERIES PICTURE UNIT	5'-0"	4'-0"	8'-0"	MAIN FLOOR PLAN		
4	ANDERSON A41	1	ANDERSON 400 SERIES AWNING WINDOW	2'-0"	4'-0"	2'-11"	TOP OF FOUND 2		
4	ANDERSON A41	1	ANDERSON 400 SERIES AWNING WINDOW	2'-0"	4'-0"	2'-11"	TOP OF FOUND 2		
4	ANDERSON A41	1	ANDERSON 400 SERIES AWNING WINDOW	2'-0"	4'-0"	2'-11"	TOP OF FOUND 2		
4	ANDERSON A41	1	ANDERSON 400 SERIES AWNING WINDOW	2'-0"	4'-0"	2'-11"	TOP OF FOUND 2		
3	ANDERSON P4050	1	ANDERSON 400 SERIES PICTURE UNIT	5'-0"	4'-0"	7'-11"	TOP OF FOUND 2		
3	ANDERSON P4050	1	ANDERSON 400 SERIES PICTURE UNIT	5'-0"	4'-0"	7'-11"	TOP OF FOUND 2		
4	ANDERSON A41	1	ANDERSON 400 SERIES AWNING WINDOW	2'-0"	4'-0"	2'-11"	TOP OF FOUND 2		
4	ANDERSON A41	1	ANDERSON 400 SERIES AWNING WINDOW	2'-0"	4'-0"	2'-11"	TOP OF FOUND 2		
3	ANDERSON P4050	1	ANDERSON 400 SERIES PICTURE UNIT	5'-0"	4'-0"	7'-11"	TOP OF FOUND 2		
3	ANDERSON P4050	1	ANDERSON 400 SERIES PICTURE UNIT	5'-0"	4'-0"	7'-11"	TOP OF FOUND 2		
4	ANDERSON A41	1	ANDERSON 400 SERIES AWNING WINDOW	2'-0"	4'-0"	2'-11"	TOP OF FOUND 2		
4	ANDERSON A41	1	ANDERSON 400 SERIES AWNING WINDOW	2'-0"	4'-0"	2'-11"	TOP OF FOUND 2		
3	ANDERSON P4050	1	ANDERSON 400 SERIES PICTURE UNIT	5'-0"	4'-0"	7'-11"	TOP OF FOUND 2		
4	ANDERSON A41	1	ANDERSON 400 SERIES AWNING WINDOW	2'-0"	4'-0"	2'-11"	TOP OF FOUND 2		
3	ANDERSON P4050	1	ANDERSON 400 SERIES PICTURE UNIT	5'-0"	4'-0"	7'-11"	TOP OF FOUND 2		
4	ANDERSON A41	1	ANDERSON 400 SERIES AWNING WINDOW	2'-0"	4'-0"	2'-11"	TOP OF FOUND 2		
3	ANDERSON P4050	1	ANDERSON 400 SERIES PICTURE UNIT	5'-0"	4'-0"	7'-11"	TOP OF FOUND 2		
4	ANDERSON A41	1	ANDERSON 400 SERIES AWNING WINDOW	2'-0"	4'-0"	2'-11"	TOP OF FOUND 2		
3	ANDERSON P4050	1	ANDERSON 400 SERIES PICTURE UNIT	5'-0"	4'-0"	7'-11"	TOP OF FOUND 2		
4	ANDERSON A41	1	ANDERSON 400 SERIES AWNING WINDOW	2'-0"	4'-0"	2'-11"	TOP OF FOUND 2		
3	ANDERSON P4050	1	ANDERSON 400 SERIES PICTURE UNIT	5'-0"	4'-0"	7'-11"	TOP OF FOUND 2		
4	ANDERSON A41	1	ANDERSON 400 SERIES AWNING WINDOW	2'-0"	4'-0"	2'-11"	TOP OF FOUND 2		
4	ANDERSON A41	1	ANDERSON 400 SERIES AWNING WINDOW	2'-0"	4'-0"	2'-11"	TOP OF FOUND 2		
3	ANDERSON P4050	1	ANDERSON 400 SERIES PICTURE UNIT	5'-0"	4'-0"	7'-11"	TOP OF FOUND 2		
4	ANDERSON A41	1	ANDERSON 400 SERIES AWNING WINDOW	2'-0"	4'-0"	2'-11"	TOP OF FOUND 2		
4	ANDERSON A41	1	ANDERSON 400 SERIES AWNING WINDOW	2'-0"	4'-0"	2'-11"	TOP OF FOUND 2		
7	ANDERSON 4070	1	PART OF DOOR ASSEMBLY - SEE SCHEDULE	7'-0"	4'-0"	7'-3"	MAIN FLOOR PLAN		
6	ANDERSON C14	1	ANDERSON 400 SERIES CASEMENT WINDOW	4'-0"	2'-0"	5'-9"	MAIN CEILING		
5	ANDERSON A21	1	ANDERSON 400 SERIES AWNING WINDOW	2'-0"	2'-0"	5'-9"	MAIN CEILING		
5	ANDERSON A21	1	ANDERSON 400 SERIES AWNING WINDOW	2'-0"	2'-0"	5'-9"	MAIN CEILING		
5	ANDERSON A21	1	ANDERSON 400 SERIES AWNING WINDOW	2'-0"	2'-0"	6'-8"	MAIN FLOOR PLAN		
5	ANDERSON A21	1	ANDERSON 400 SERIES AWNING WINDOW	2'-0"	2'-0"	6'-8"	MAIN FLOOR PLAN		
5	ANDERSON A21	1	ANDERSON 400 SERIES AWNING WINDOW	2'-0"	2'-0"	6'-8"	MAIN FLOOR PLAN		
57	24" Diameter	1		1'-0"	2'-0"	3'-0"	MAIN FLOOR TERRACE		
67	48" x 48"	1		4'-0"	4'-0"	7'-0"	MAIN FLOOR PLAN		
60	24" x 24"	1	ANDERSON 400 SERIES CASEMENT WINDOW	2'-0"	2'-0"	6'-8"	MAIN FLOOR PLAN		
60	24" x 24"	1	ANDERSON 400 SERIES CASEMENT WINDOW	2'-0"	2'-0"	6'-8"	MAIN FLOOR PLAN		

DATE: 4-15-04

REVISIONS:  
ISSUED 5-28-04



DESIGNS  
9995 WEST 69TH ST.  
SUITE 102  
EDEN PRAIRIE, MN. 55334  
PHONE: 952-826-2222  
FAX: 952-941-6515

REO RAJ PROJECT

JOB NO: 2004

SHEET NO:

**A8**  
DOOR & WINDOW  
SCHEDULE