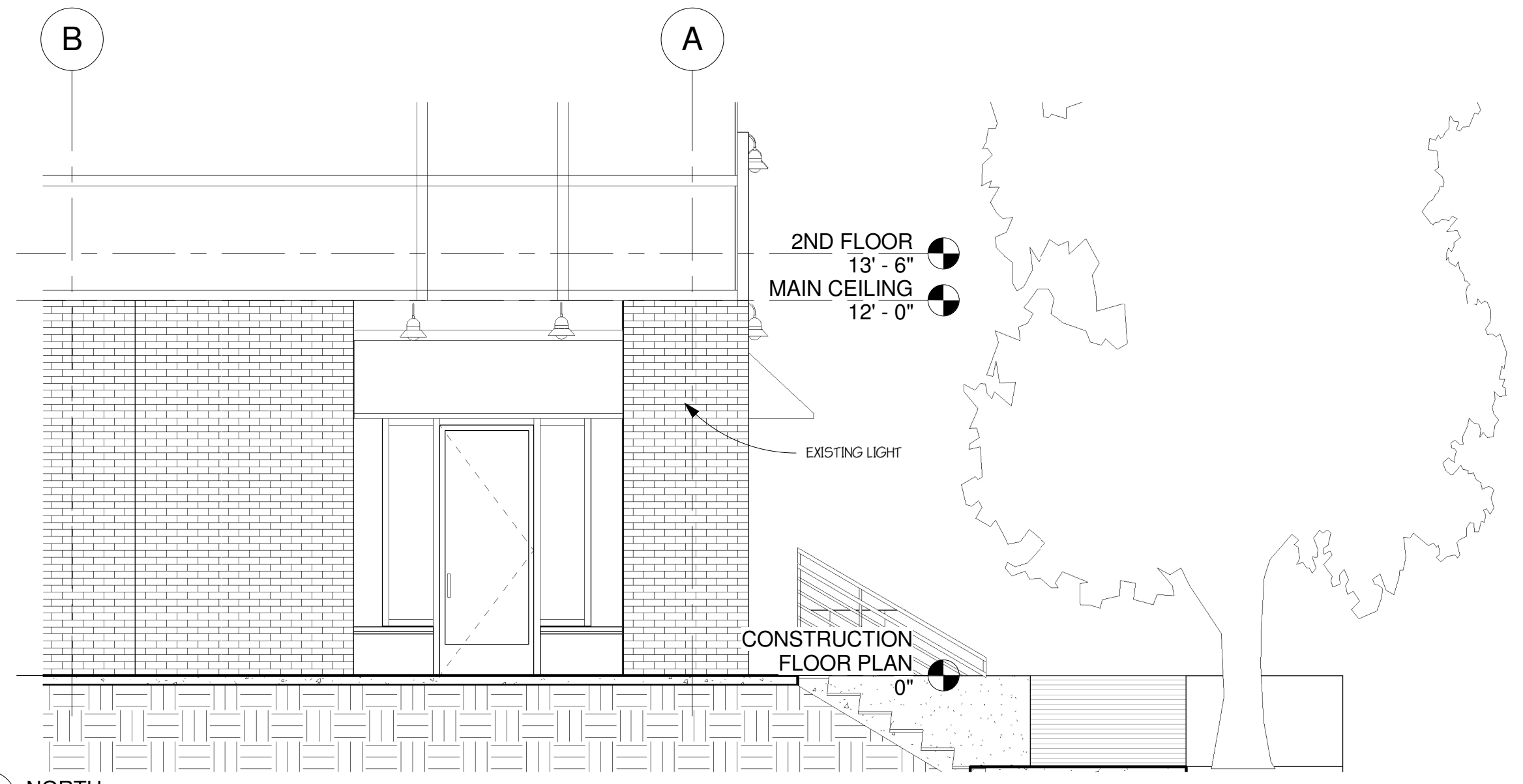


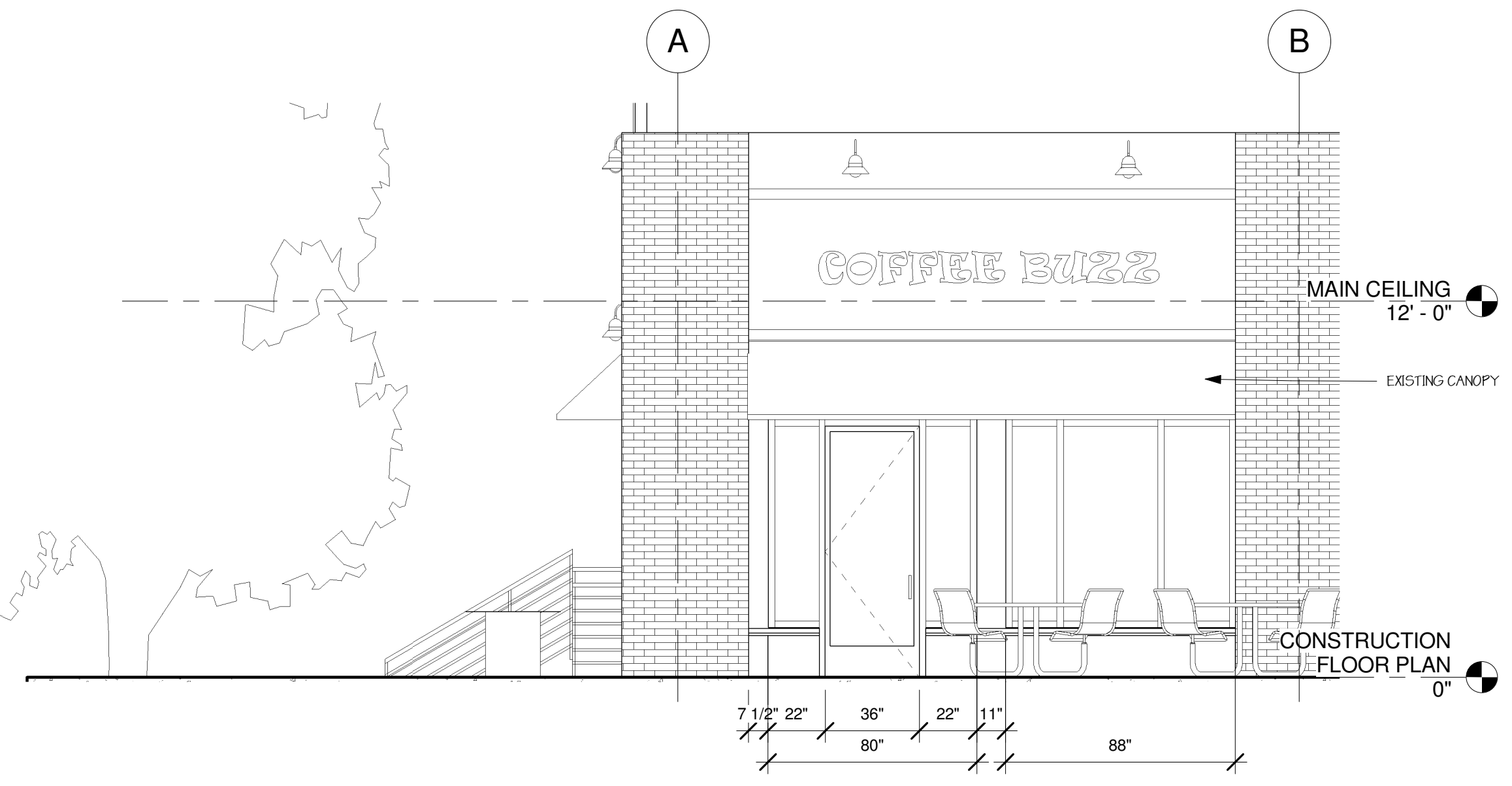
DATE: 3-2009

REVISIONS:

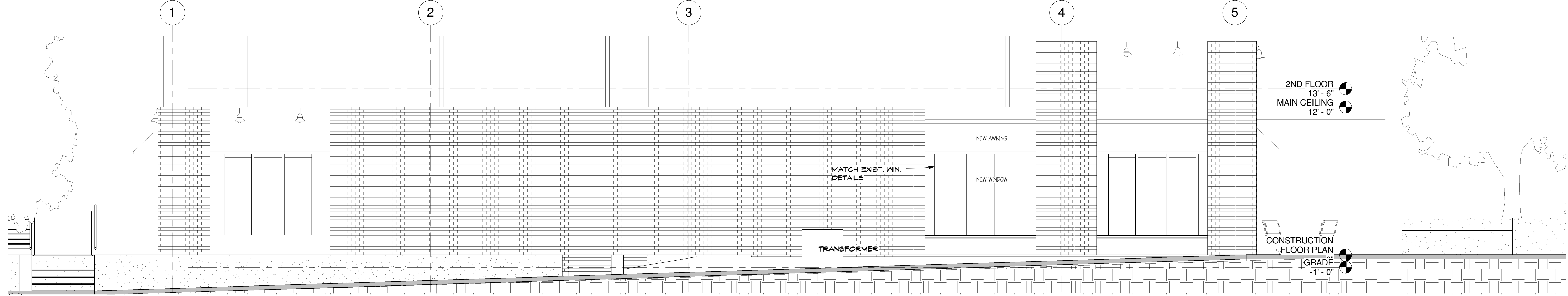
PRINTED FOR REVIEW: 3-30-09
PRINTED: 4-13-09
PRINTED: 4-24-09
PRINTED: 4-28-09
REVISED 8-15-08
ISSUED FOR REVIEW 9-16-09
ISSUED FOR CONST. 9-21-09
REVISED FOR CONST. 10-21-09
REVISED FOR CONST. 10-28-09



2 NORTH
A6 1/4" = 1'-0"



1 SOUTH
A6 1/4" = 1'-0"



3 WEST
A6 1/4" = 1'-0"



4 FRONT PERSPECTIVE
A6

BRUCE
Architect
KNUTSON
2388 UNIVERSITY AVE. W. SUITE 100
ST. PAUL, MN 55114
PHONE 612-332-8000 FAX 612-332-7504
WWW.KNUTSON-ARCHITECTS.COM

DATE: 10-28-09
I HEREBY CERTIFY THAT THIS
PROJECT WAS PREPARED BY ME
OR UNDER MY DIRECT SUPER-
VISION AND THAT I AM A
REGISTERED ARCHITECT IN THE
STATE OF MINNESOTA.
Bruce Knutson
REGISTRATION NO. 11789

COFFEEBUZZ COFFEE SHOP

36 ST. ST
LOUIS PARK, MINNESOTA

JOB NO: 36

SHEET NO:

A6

EXTERIOR
ELEVATIONS

10/28/2009 8:26:38 PM