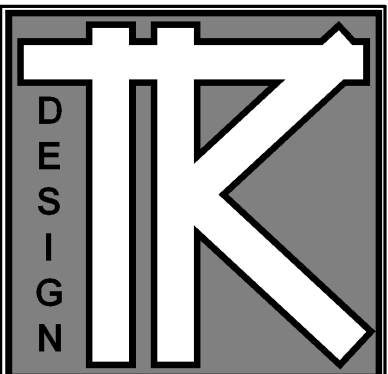


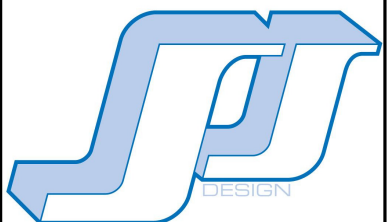
DATE: 4-4-09

REVISIONS:

- ISSUED FOR FINAL REVIEW 4-3-09
- ISSUED FOR FINAL REVISION 4-14-09
- ISSUED FOR CONST. 5-7-09
- RE-ISSUED FOR CONST. 5-15-09



TODD KNUTSON DESIGN



JFJANSEN
 2333 UNIVERSITY AV. W.
 STUDIO 100
 SAINT PAUL, MN. 55114
 PHONE: 651-472-0053
 FAX: 651-472-0060

CONRAD COUNTRY HOUSE

21780 Fairview Street
Greenwood, MN.

JOB NO: 21780

SHEET NO:

A5

ELEVATIONS



2ND CEILING 980' - 9 5/8"

UPPER PLAN 972' - 9 5/8"

MAIN CEILING 971' - 3 5/8"

MAIN PLAN 962' - 3 5/8"

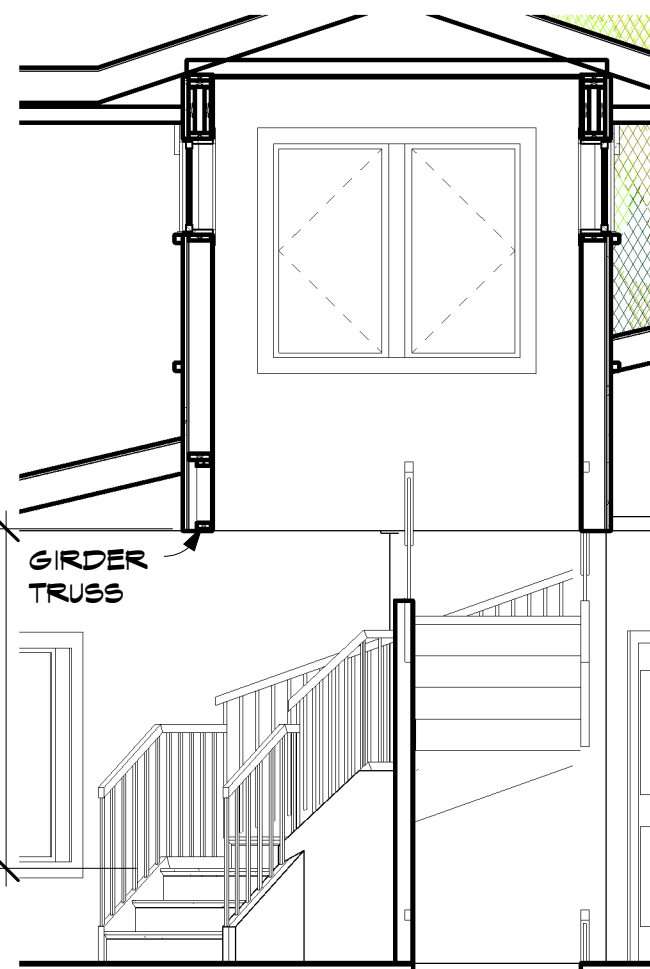
LOWER CEILING 960' - 9 5/8"

GRADE 960' - 3 5/8"

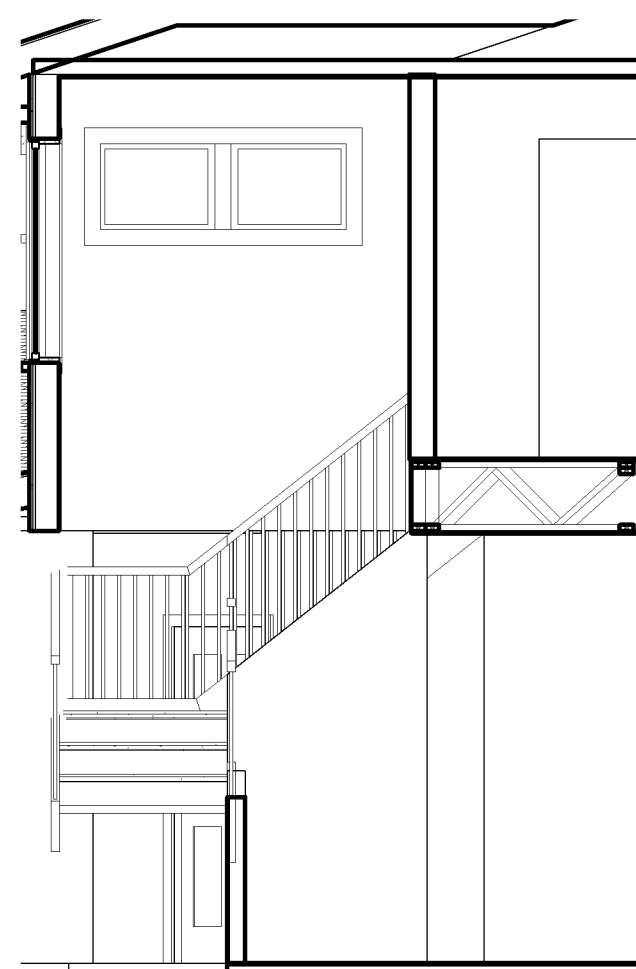
LOWER PLAN 952' - 11 5/8"

GARAGE 952' - 3 5/8"

1 WEST
A5 1/4" = 1'-0"



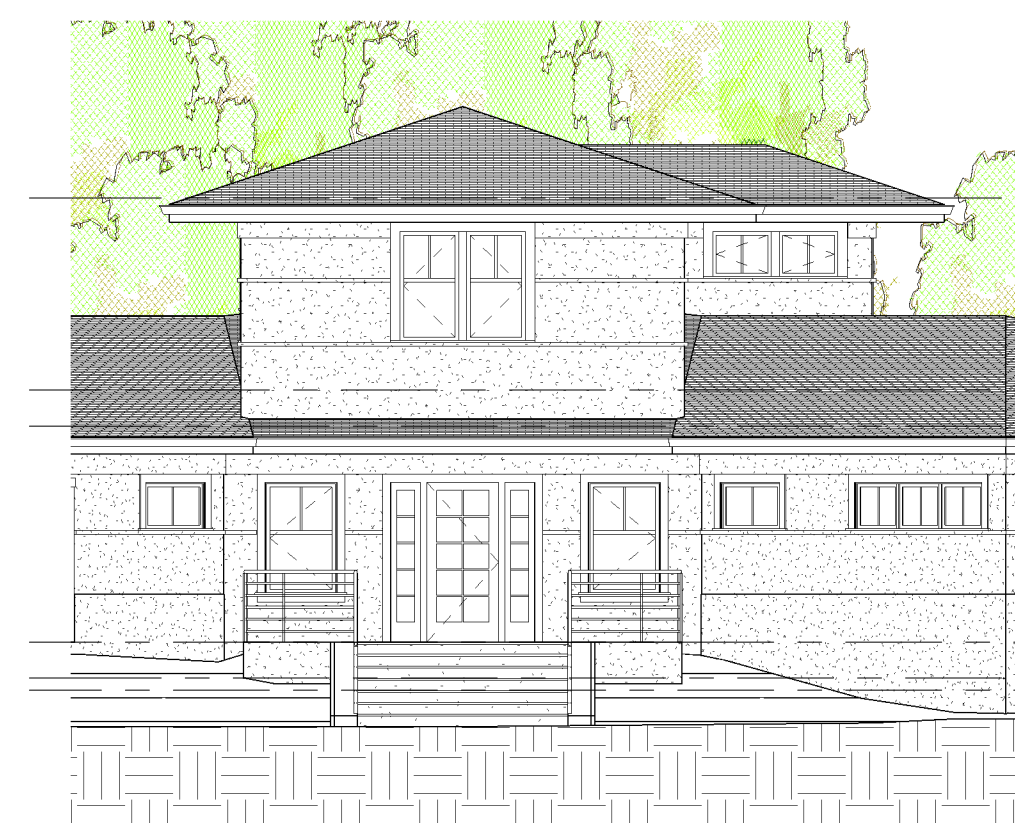
5 STAIR DETAIL 2
A5 1/4" = 1'-0"



4 STAIR DETAIL 1
A5 1/4" = 1'-0"



3 NORTH EAST
A5 1/8" = 1'-0"



2 SOUTH WEST
A5 1/8" = 1'-0"

2ND CEILING 980' - 9 5/8"

UPPER PLAN 972' - 9 5/8"

MAIN CEILING 971' - 3 5/8"

MAIN PLAN 962' - 3 5/8"

LOWER CEILING 960' - 9 5/8"

GRADE 960' - 3 5/8"