

DATE: 4-15-08

REVISIONS:

ISSUED FOR REVIEW  
AND APPROVAL  
7-1-08



TODD KNUTSON DESIGN  
550 NORTH 580 ST.  
SUITE 950  
MINNEAPOLIS, MN 55401 PHONE  
612-552-8000 X25  
FAX: 612-552-7504  
CELL: 612-291-1041

EVANS REMODEL

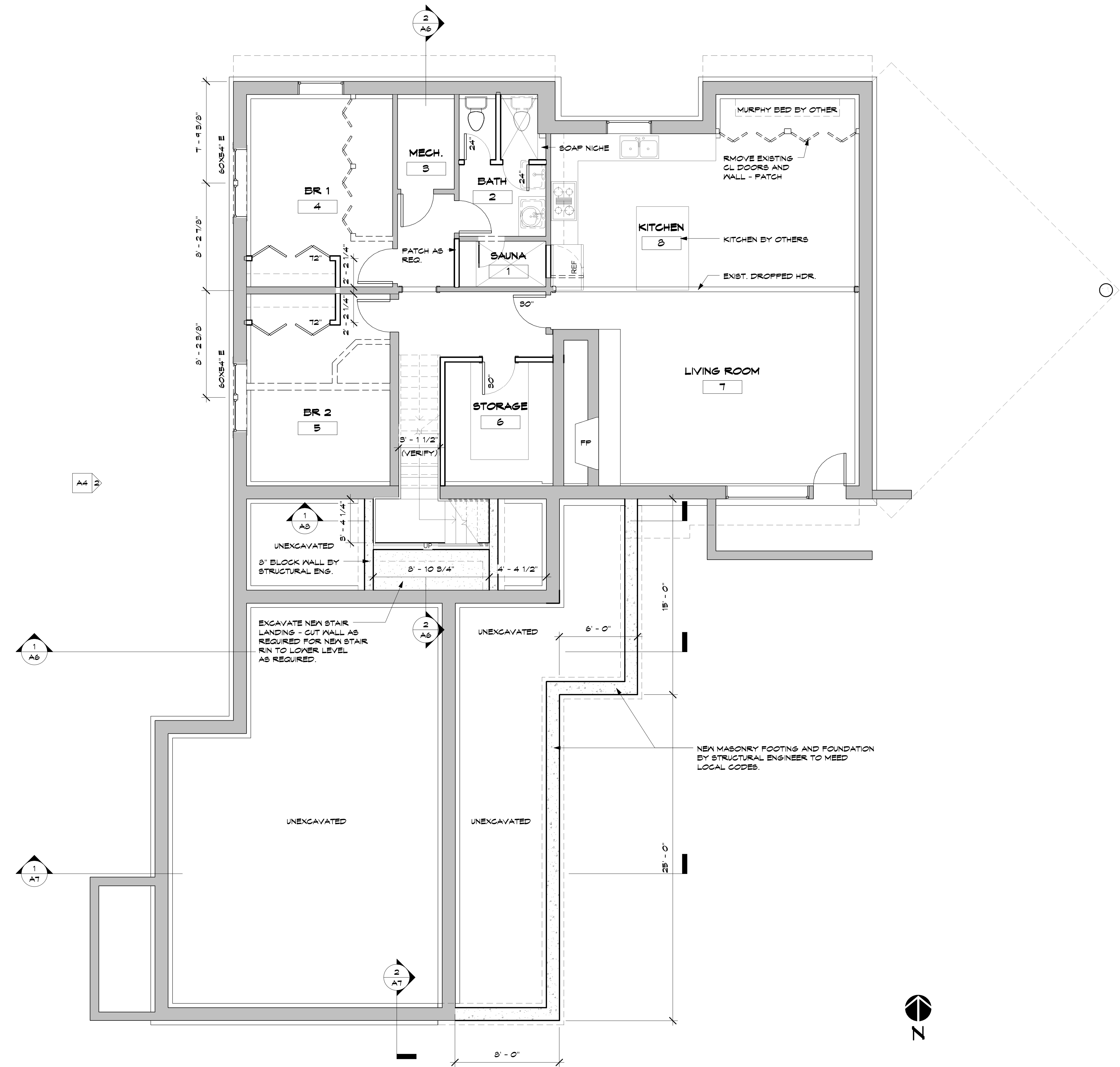
GIRDWOOD ALASKA USA

JOB NO: 0717

SHEET NO:

**A1**

LOWER FLOOR  
PLAN

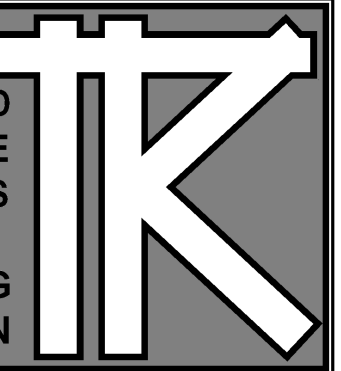


1 LOWER LEVEL - NEW  
A1 1/4" = 1'-0"

DATE: 4-15-08

REVISIONS:

ISSUED FOR REVIEW  
AND APPROVAL  
7-1-08



TODD KNUTSON DESIGN  
550 NORTH 980 ST.  
SUITE 950  
MINNEAPOLIS, MN 55401 PHONE  
612-552-8000 X25  
FAX: 612-552-7904  
CELL: 612-291-1041

EVANS REMODEL

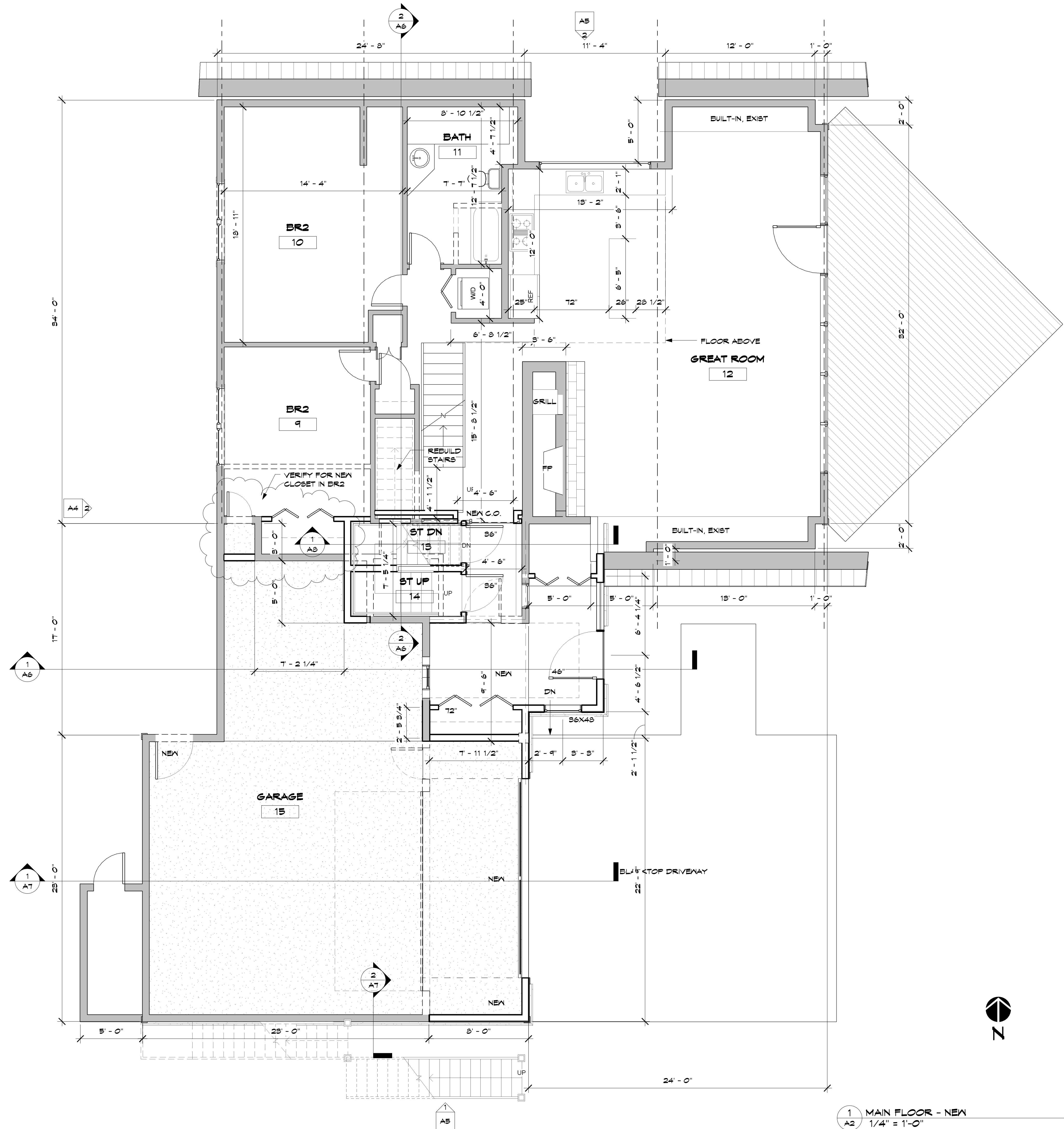
GIRDWOOD, ALASKA USA

JOB NO: 0717

SHEET NO:

**A2**

MAIN FLOOR PLAN



1 MAIN FLOOR - NEW  
A2 1/4" = 1'-0"

7/31/2008 4:15:08 PM



TODD KNUTSON DESIGN  
550 NORTH 580 ST.  
SUITE 950  
MINNEAPOLIS, MN 55401 PHONE  
612-552-8000 FAX  
612-552-7504 CELL: 612-291-1041

EVANS REMODEL

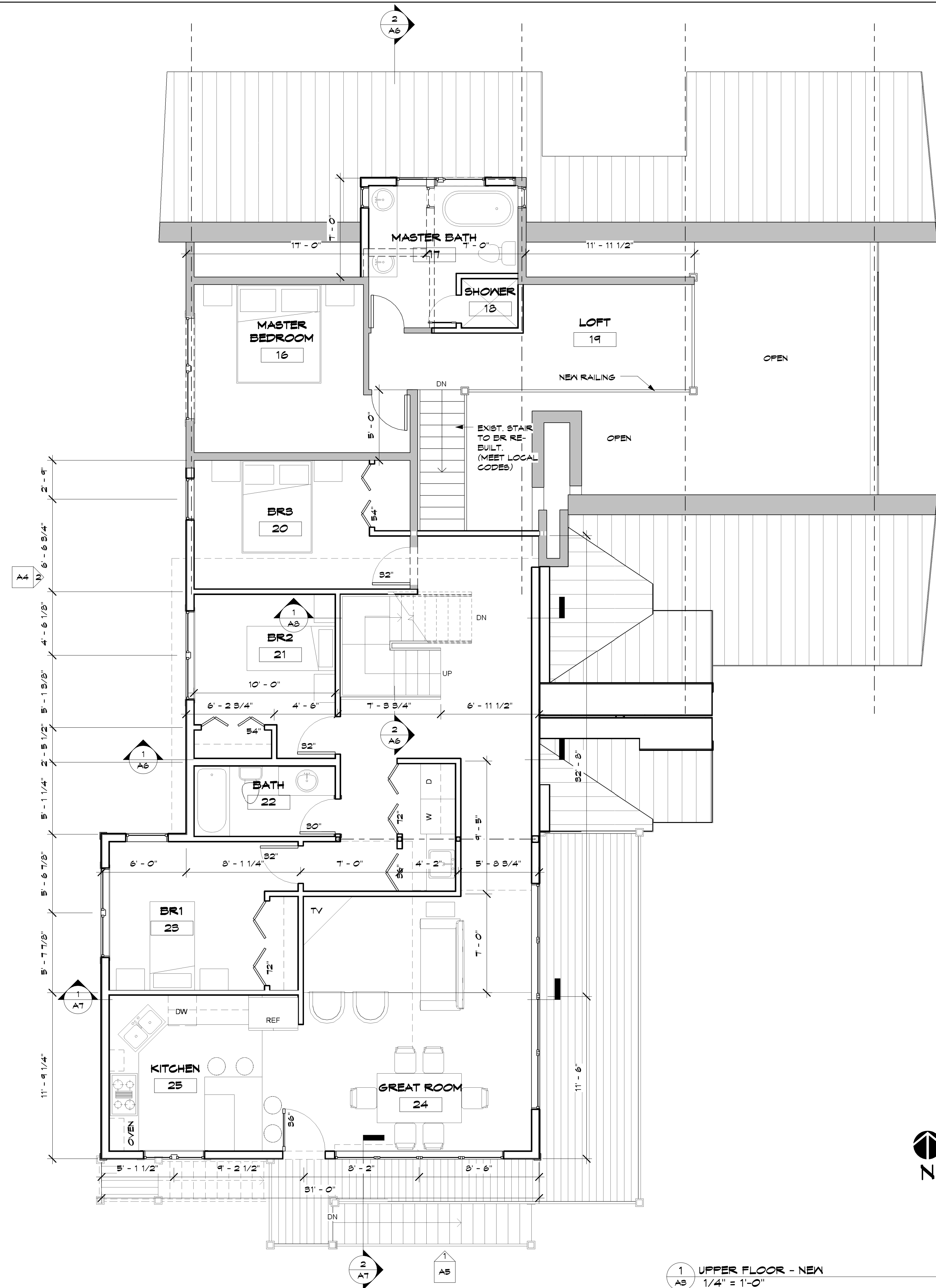
GIRDWOOD ALASKA USA

JOB NO: 0717

SHEET NO:

**A3**

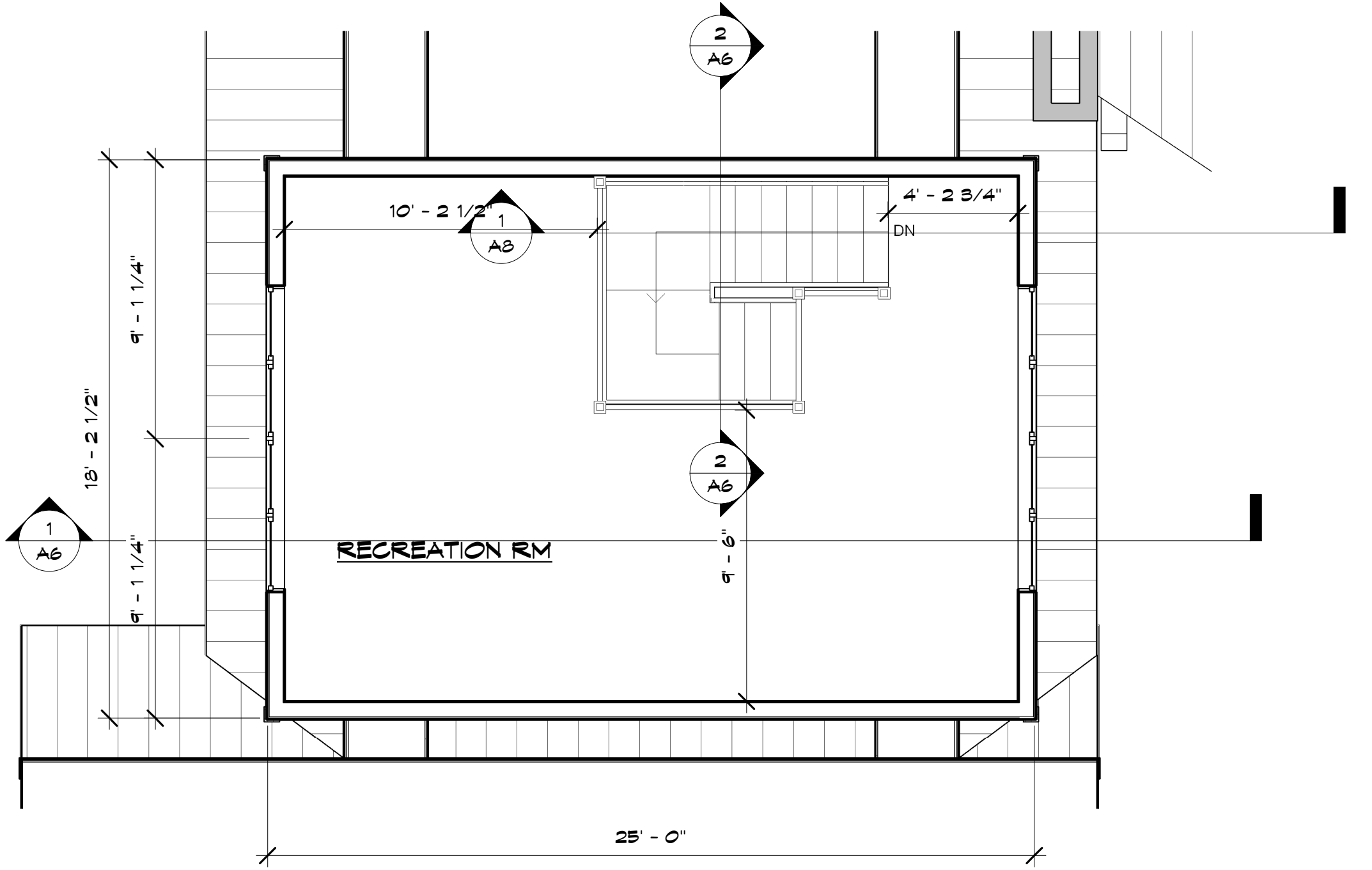
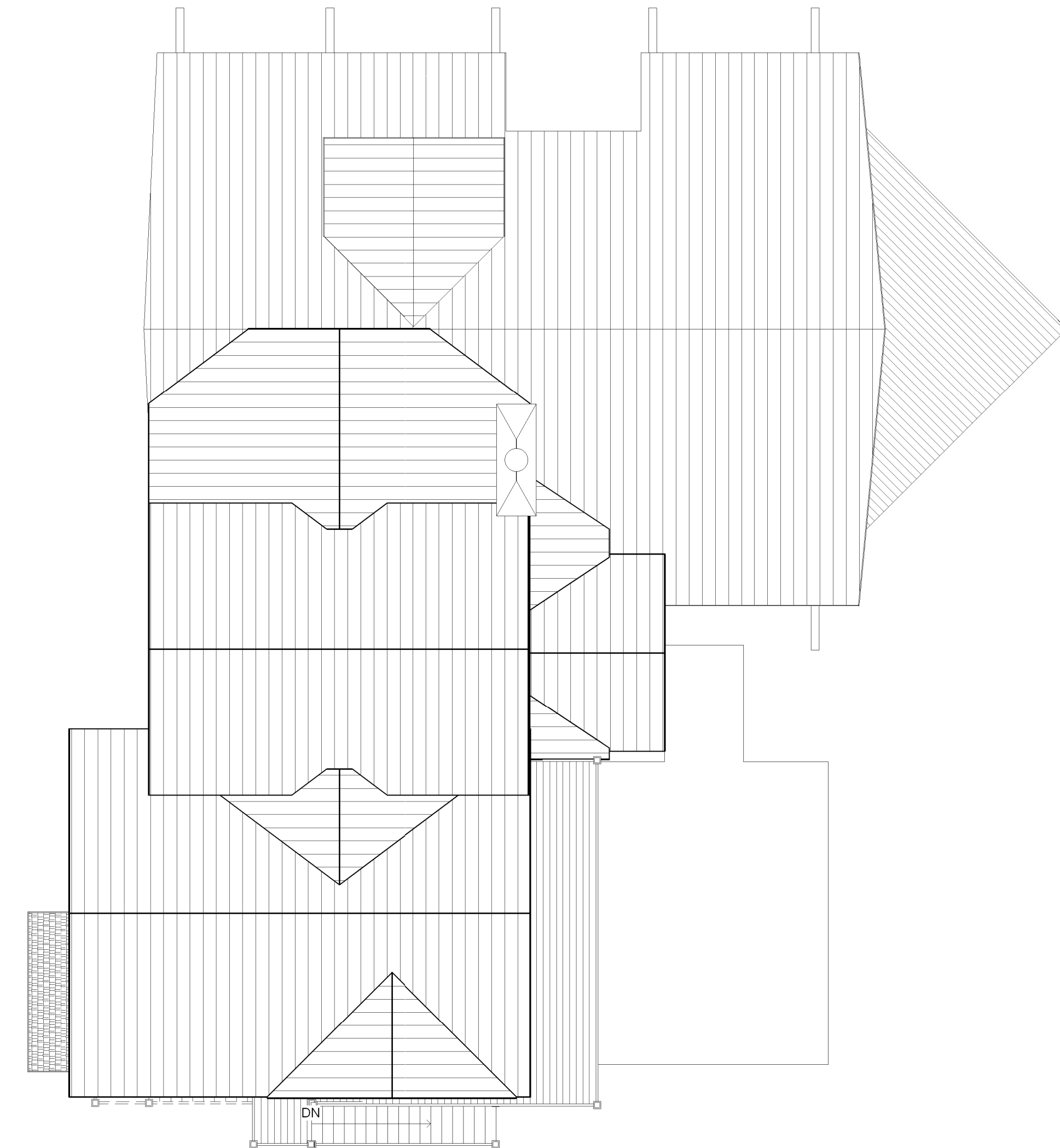
UPPER FLOOR PLAN



1 UPPER FLOOR - NEW  
AS 1/4" = 1'-0"

2 TOWER FLOOR  
AS 1/4" = 1'-0"

3 ROOF PLAN  
AS 1/8" = 1'-0"



7/31/2008 4:15:11 PM





TODD KNUTSON DESIGN  
950 NORTH 980 ST.  
SUITE 950  
MINNEAPOLIS, MN 55401 PHONE  
612-552-8000 X25  
FAX: 612-552-7504  
CELL: 612-291-1041

EVANS REMODEL

GIRDWOOD ALASKA USA

JOB NO: 0717

SHEET NO:

**A4**

EXTERIOR ELEVATIONS



1 East  
A4 1/4" = 1'-0"

2 West  
A4 1/4" = 1'-0"

DATE: 4-15-08

REVISIONS:

ISSUED FOR REVIEW  
AND APPROVAL  
7-1-08



TODD KNUTSON DESIGN  
950 NORTH 980 ST.  
SUITE 950  
MINNEAPOLIS, MN 55401 PHONE  
612-552-8000 X25  
FAX: 612-552-7504  
CELL: 612-291-1041

EVANS REMODEL

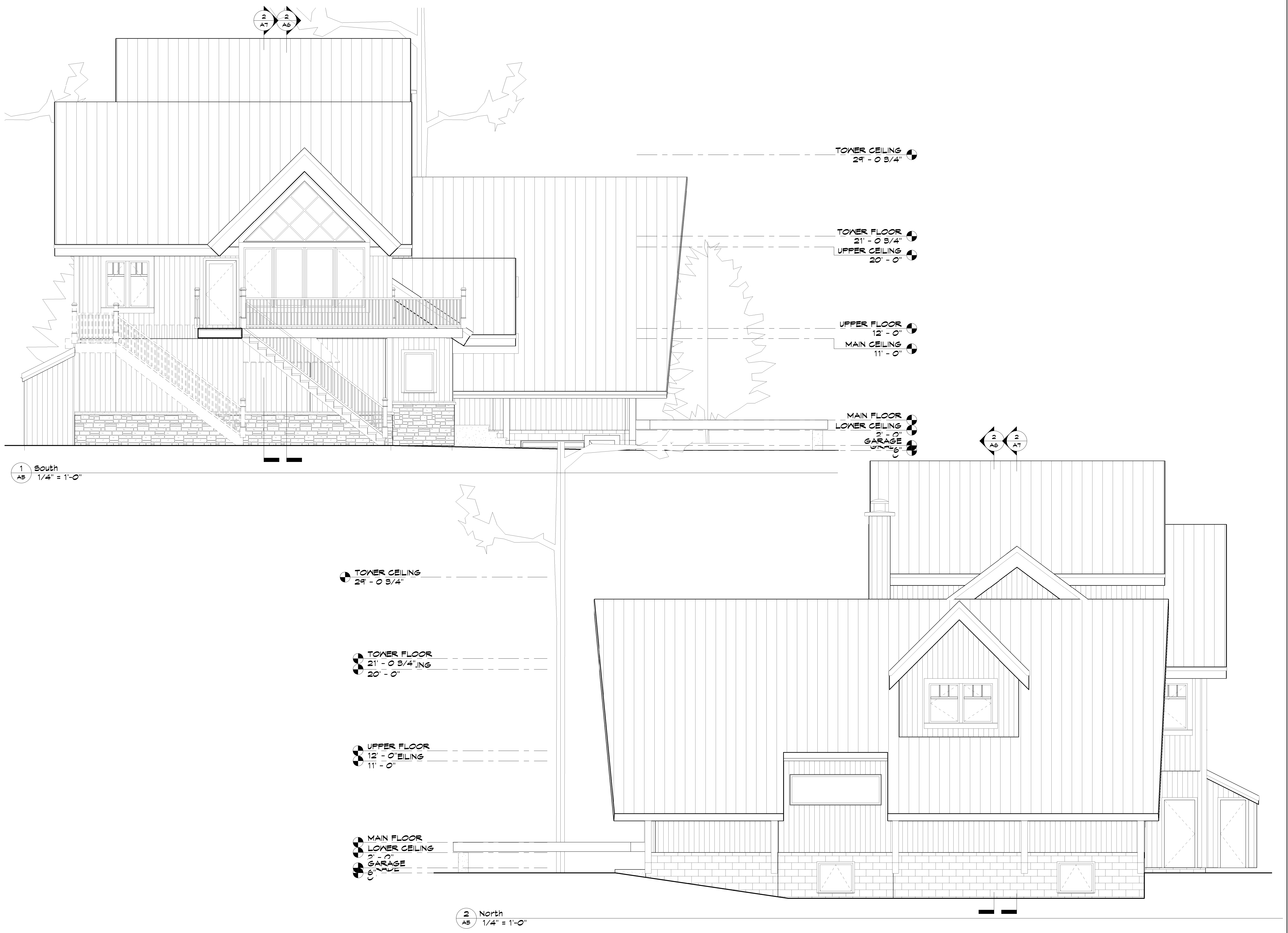
GIRDWOOD, ALASKA USA

JOB NO: 0717

SHEET NO:

**A5**

EXTERIOR  
ELEVATIONS



7/31/2008 4:15:19 PM



TODD KNUTSON DESIGN  
550 NORTH 580 ST.  
SUITE 950  
MINNEAPOLIS, MN 55401 PHONE  
612-552-8000 FAX  
612-552-7504 CELL: 612-291-1041

EVANS REMODEL

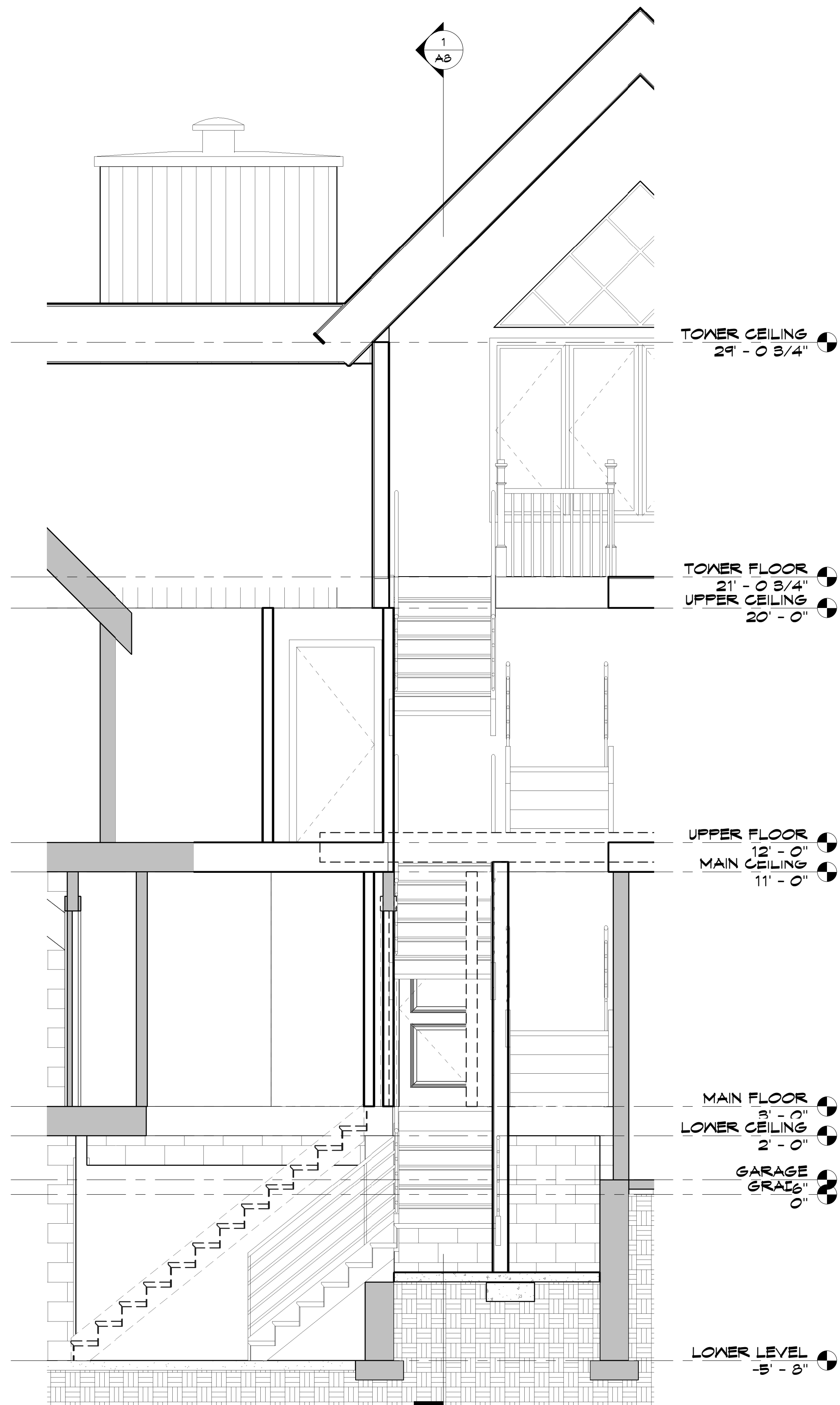
GIRDWOOD ALASKA USA

JOB NO: 0717

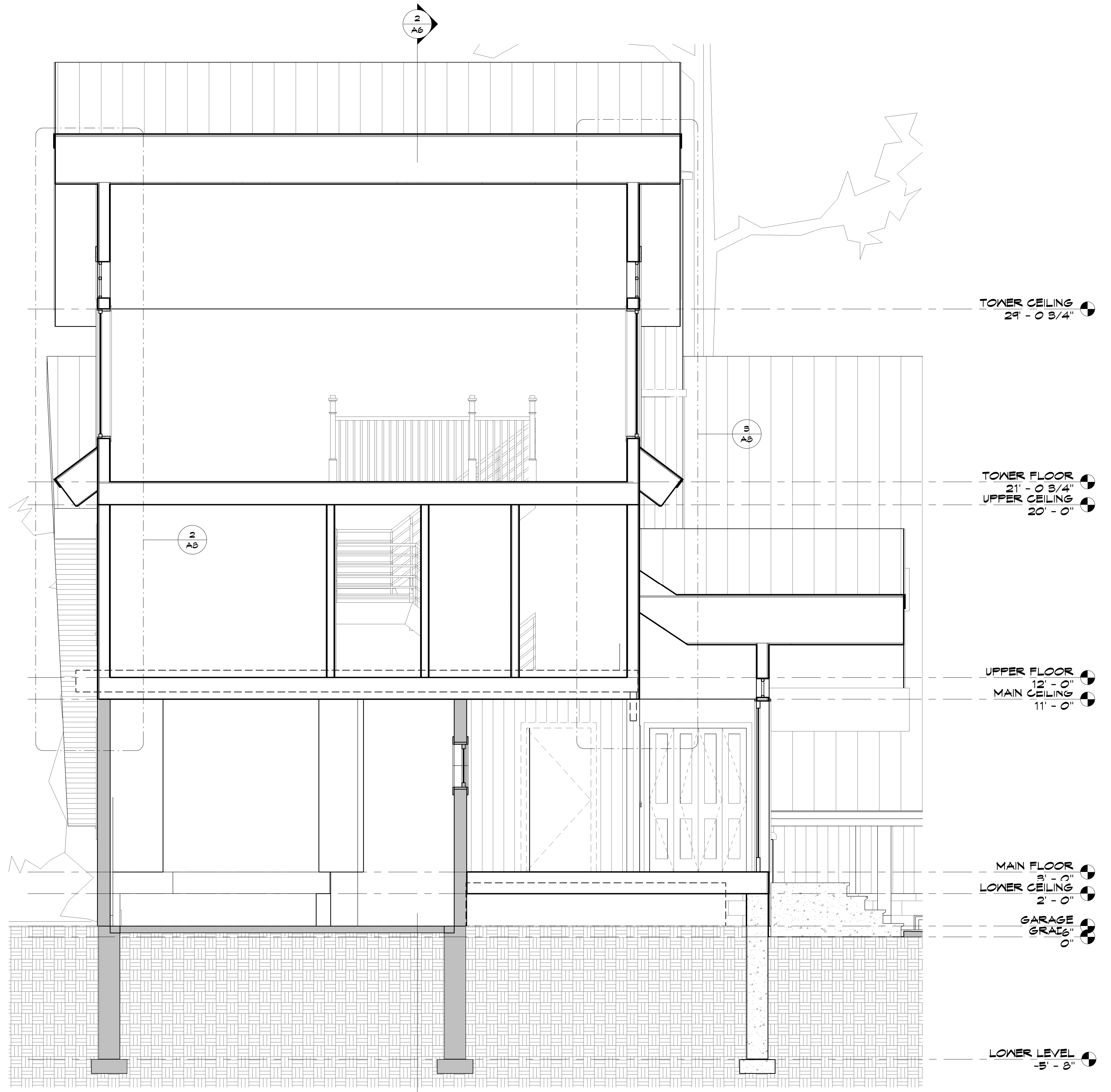
SHEET NO:

**A6**

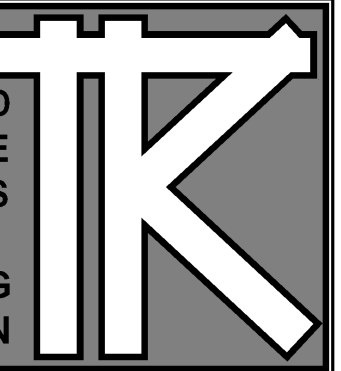
SECTIONS



**2** STAIR SECTION  
A6 3/8" = 1'-0"



**1** FOYER SECTION  
A6 3/8" = 1'-0"



TODD KNUITSON DESIGN  
550 NORTH 580 ST.  
SUITE 950  
MINNEAPOLIS, MN 55401 PHONE  
612-552-8000 X25  
FAX: 612-552-7504  
CELL: 612-291-1041

EVANS REMODEL

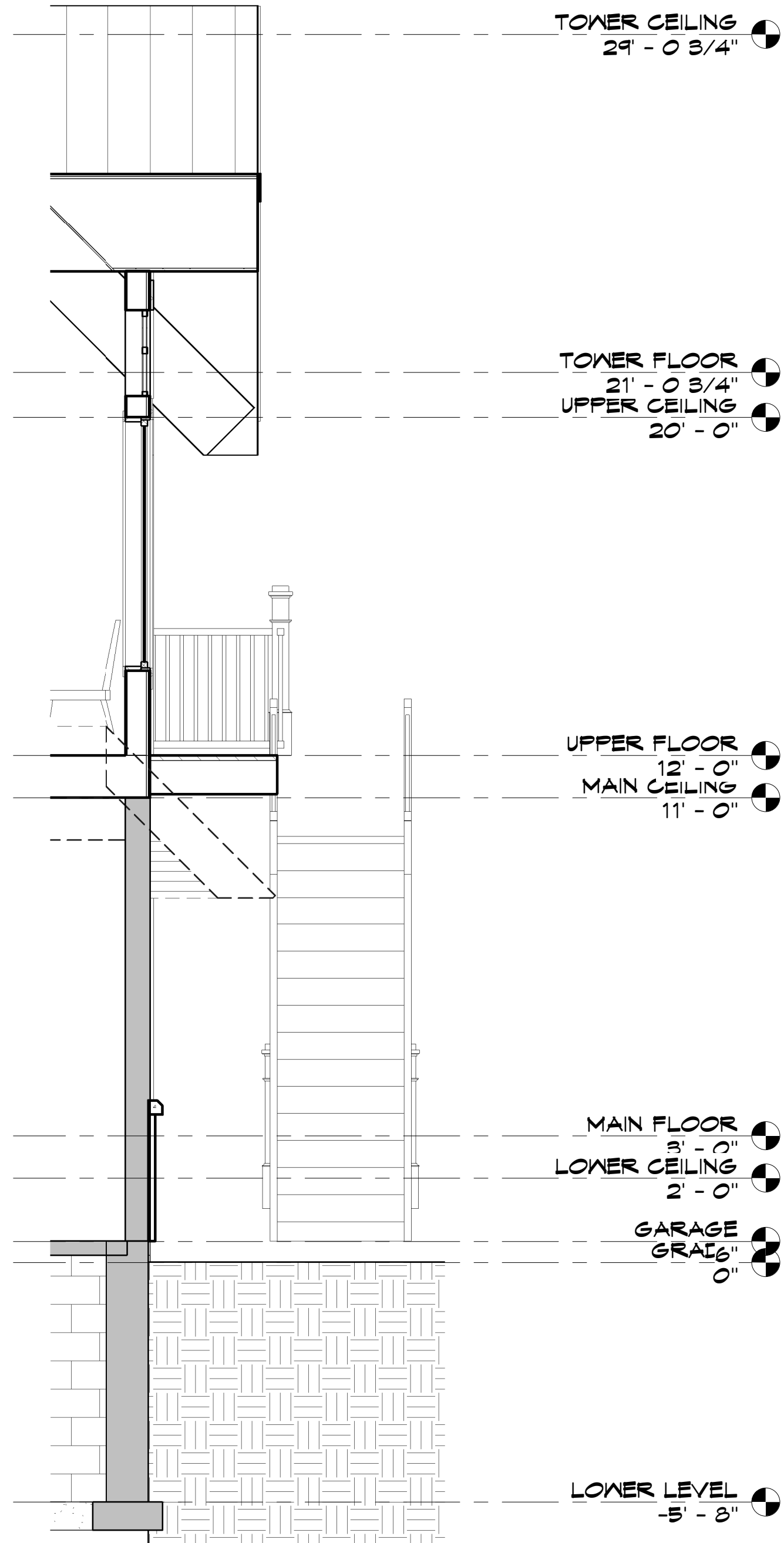
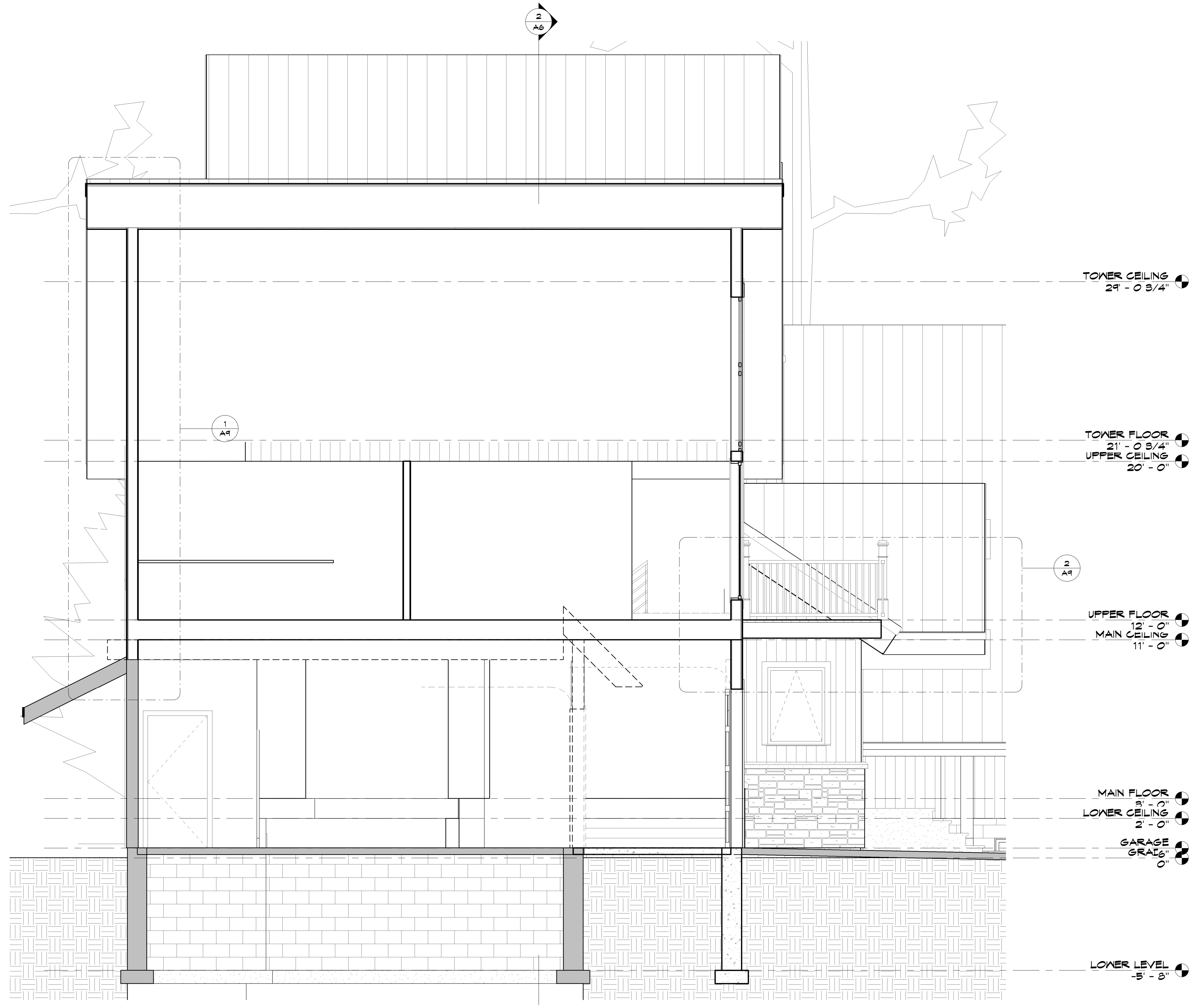
GIRDWOOD ALASKA USA

JOB NO: 0717

SHEET NO:

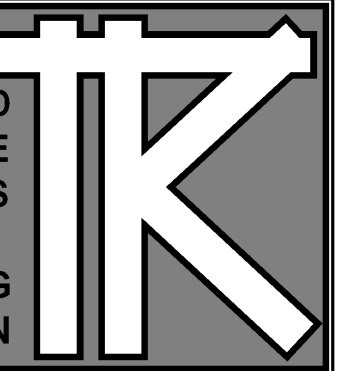
**A7**

SECTIONS



1 GARAGE ADDITION SECTION  
3/8" = 1'-0"

2 WALL DETAIL AT GARAGE  
3/8" = 1'-0"



TODD KNUTSON DESIGN  
950 NORTH 980 ST.  
SUITE 950  
MINNEAPOLIS, MN 55401 PHONE  
612-552-8000 X25  
FAX: 612-552-7504  
CELL: 612-291-1041

EVANS REMODEL

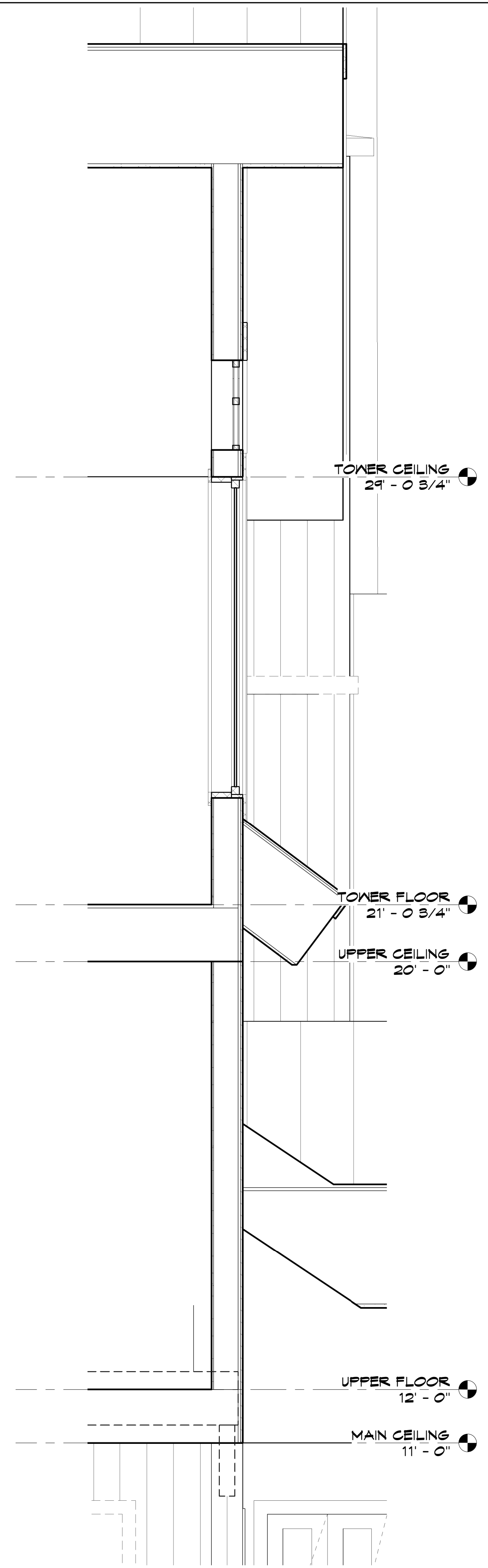
GIRDWOOD ALASKA USA

JOB NO: 0717

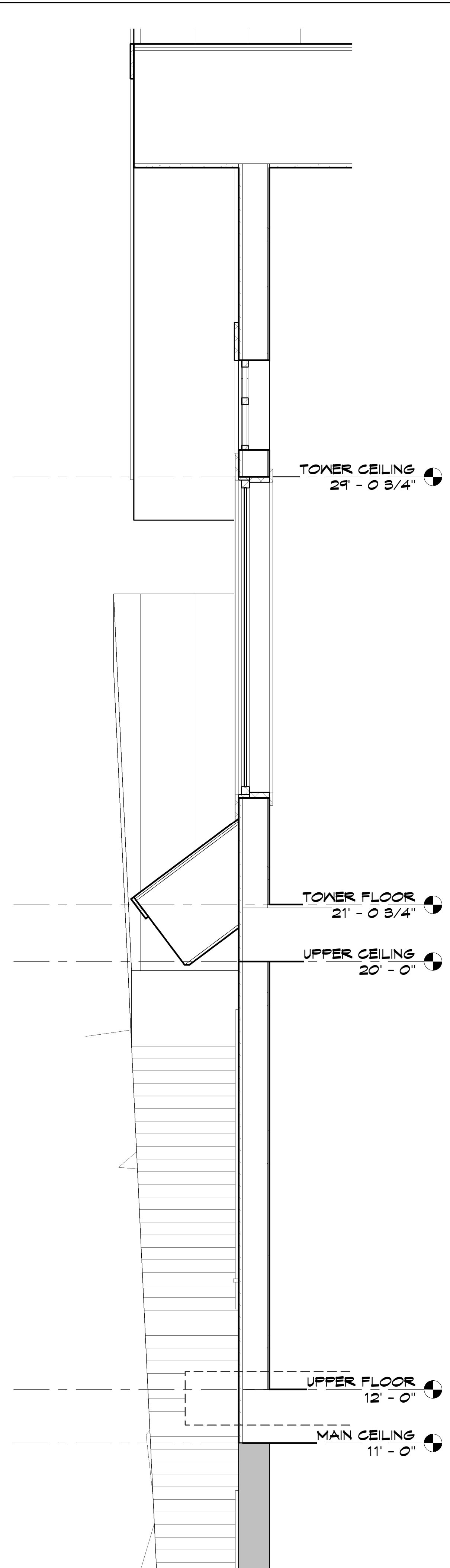
SHEET NO:

**A8**

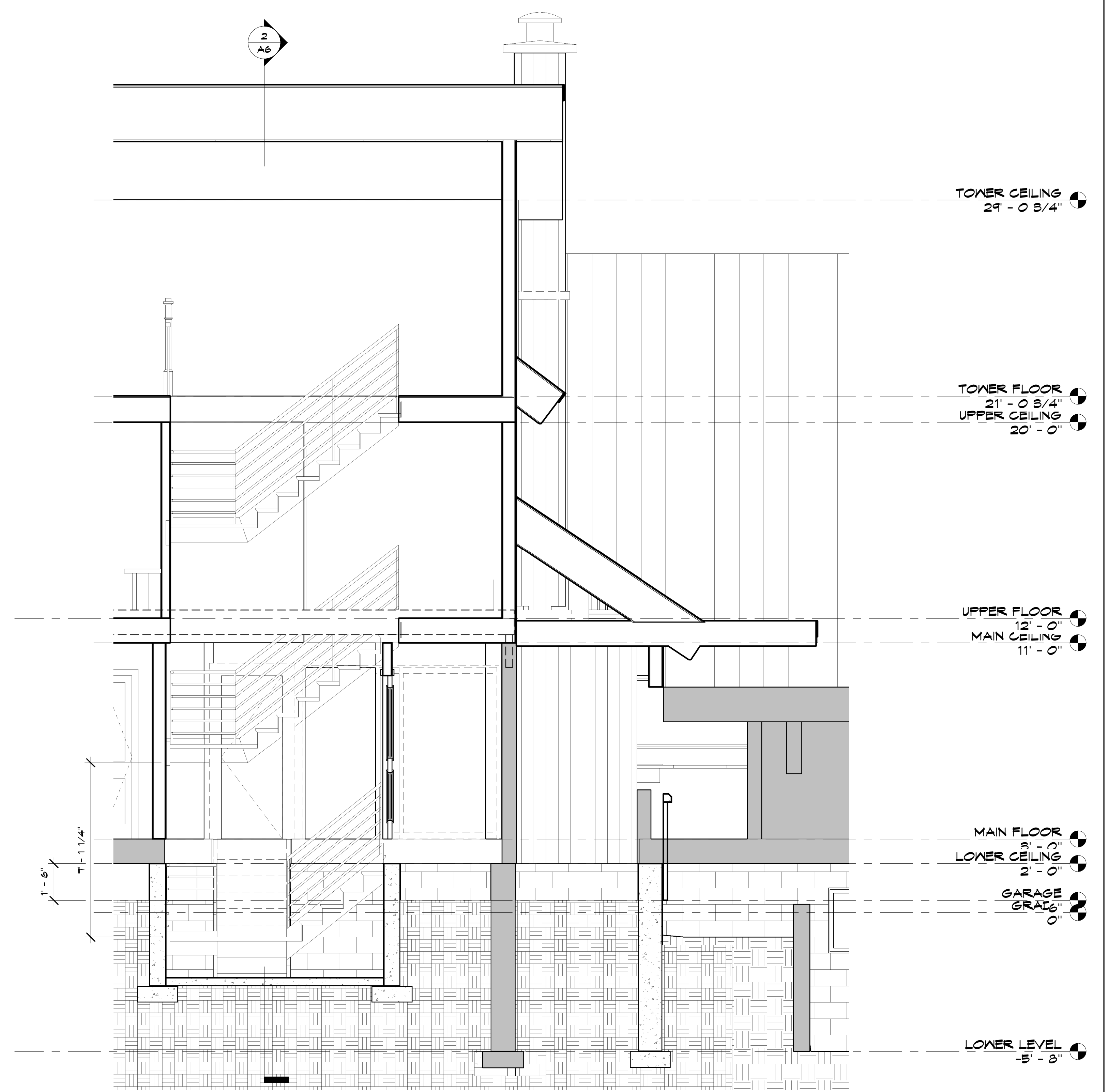
SECTIONS



1 Callout of FOYER SECTION  
3/4" = 1'-0"



2 Callout (2) of FOYER SECTION  
3/4" = 1'-0"



1 STAIR FOYER SECTION  
3/8" = 1'-0"

7/31/2008 4:15:30 PM



DATE: 4-15-08

REVISIONS:

ISSUED FOR REVIEW  
AND APPROVAL  
7-1-08



TODD KNUTSON DESIGN  
550 NORTH 580 ST.  
SUITE 550  
MINNEAPOLIS, MN 55401 PHONE  
612-552-8000 X25  
FAX: 612-552-7504  
CELL: 612-291-1044

EVANS REMODEL

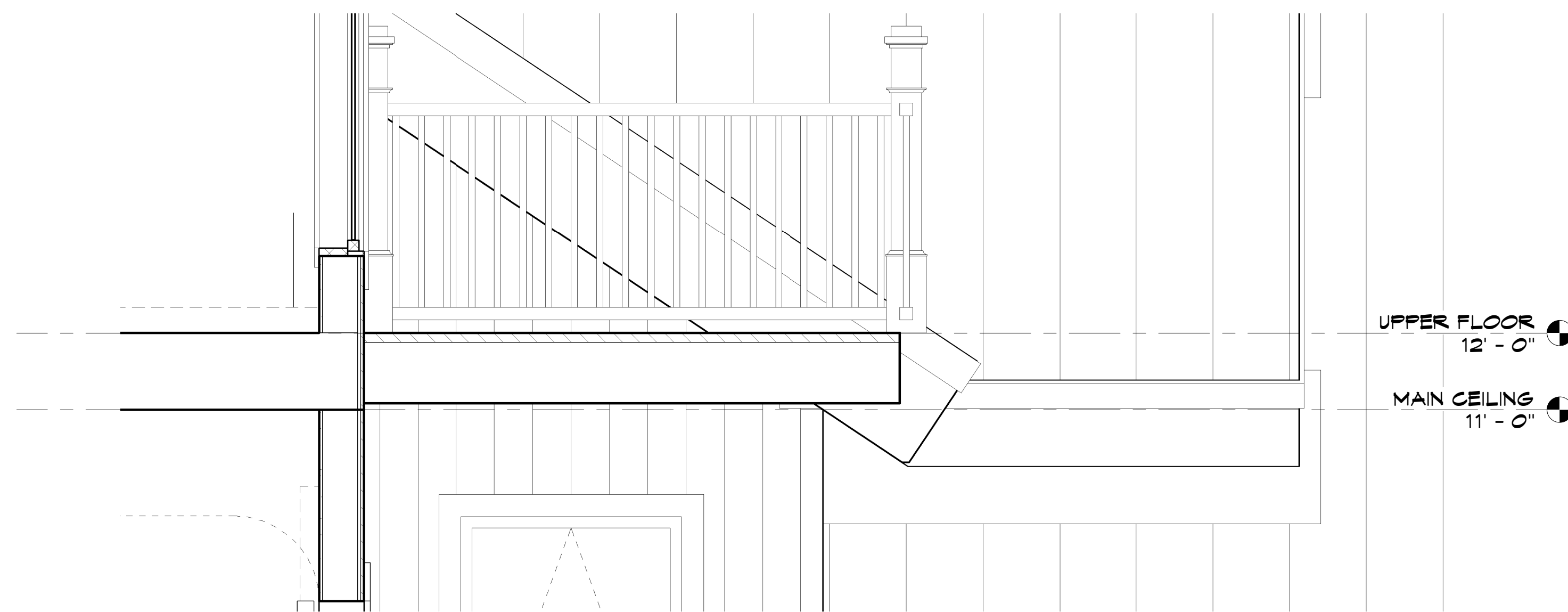
GIRDWOOD ALASKA USA

JOB NO: 0717

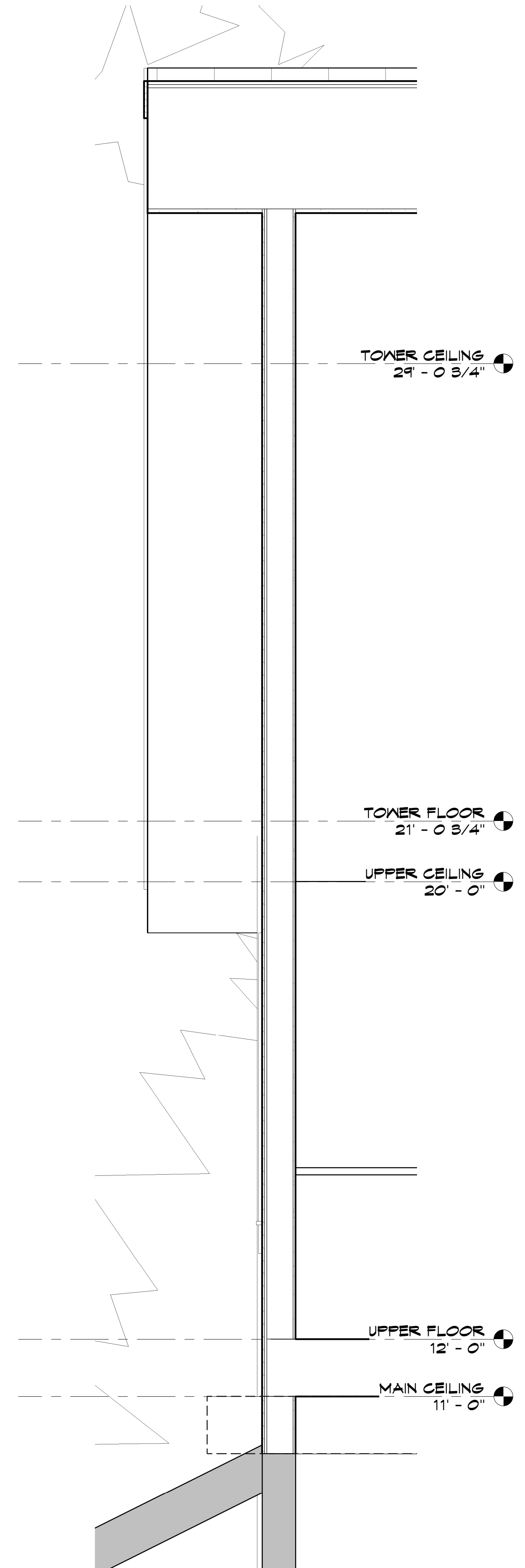
SHEET NO:

**A9**

SECTIONS



2 Callout (2) of GARAGE ADDITION SECTION  
A9 3/4" = 1'-0"



1 Callout of GARAGE ADDITION SECTION  
A9 3/4" = 1'-0"