

TODD KNUTSON DESIGN  
530 NORTH BRD ST.  
SUITE 530  
MINNEAPOLIS, MN. 55401  
PHONE: 612-332-2000  
X25  
FAX: 612-332-7504  
CELL: 612-251-1041

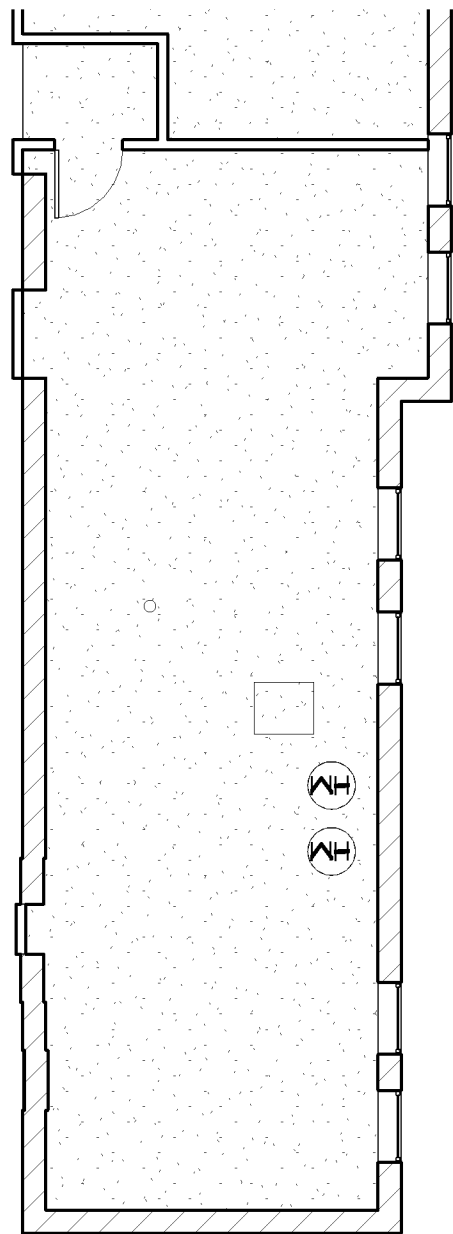
**FILING REMODELING**

756 DAYTON AVE.  
APT. 2  
SAINT PAUL, MN. 55104-7201

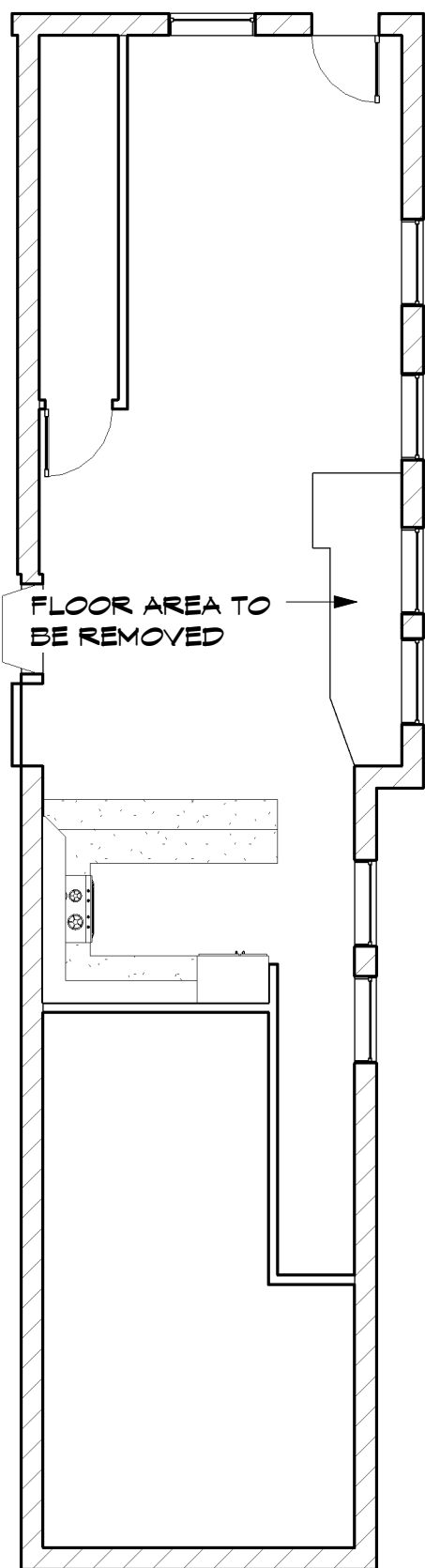
JOB NO: 756

SHEET NO:

**A1**  
PERSPECTIVES  
AND AS BUILT



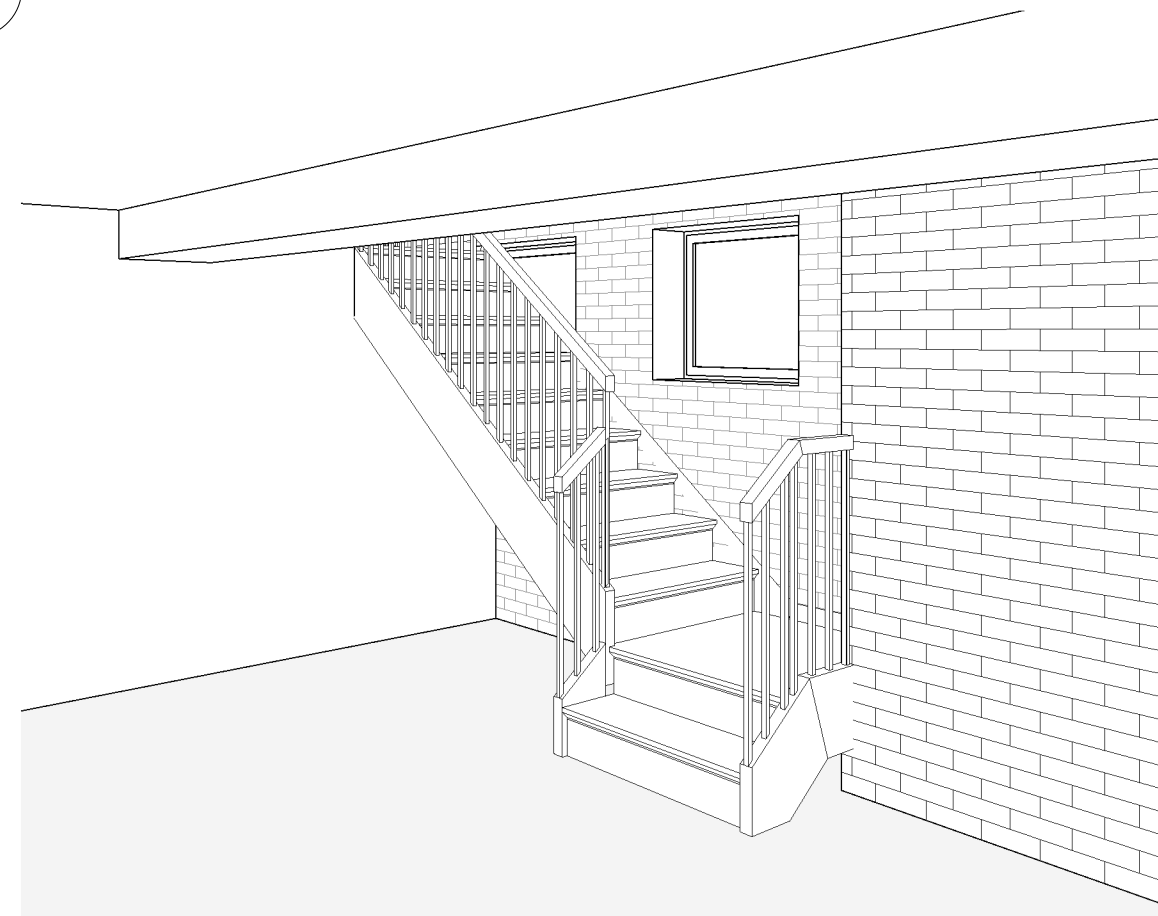
1 LOWER LEVEL EXISTING  
A1 1/8" = 1'-0"



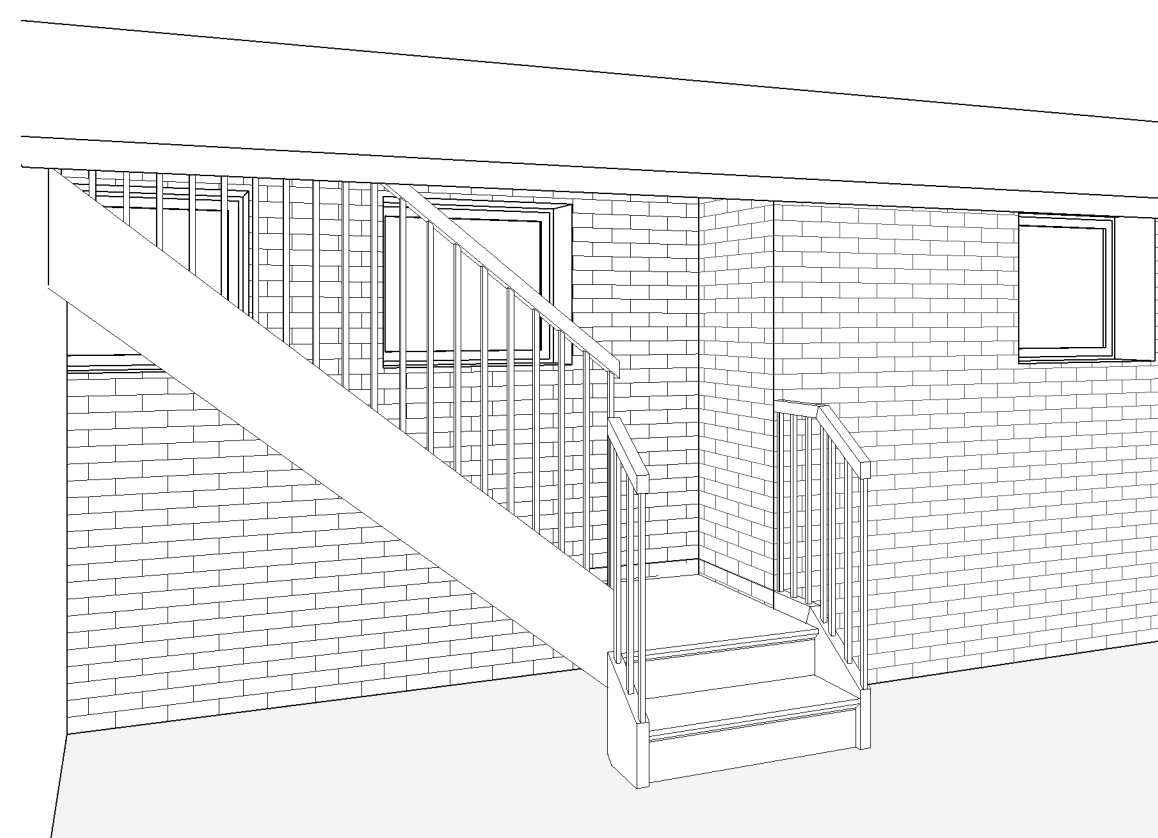
2 MAIN FLOOR EXISTING  
A1 1/8" = 1'-0"



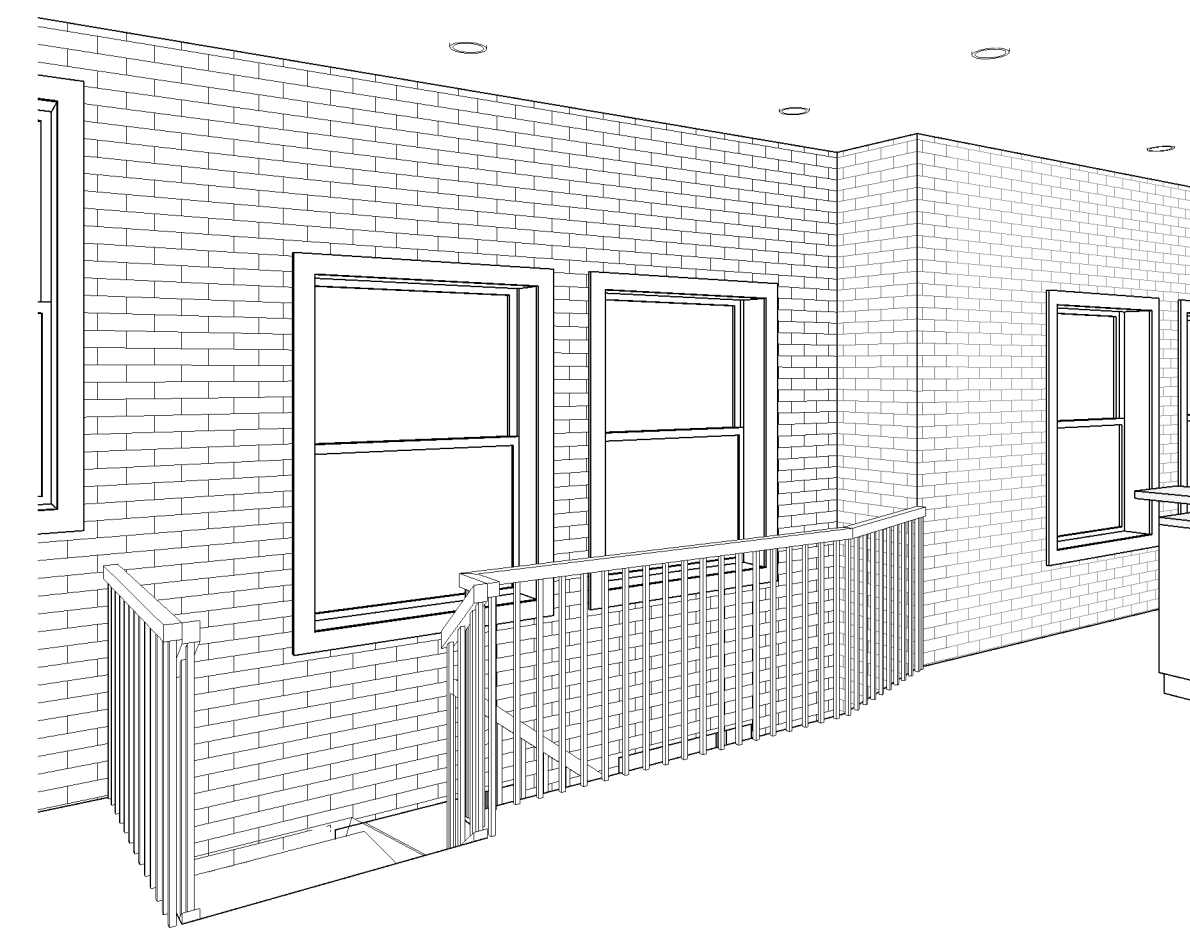
6 NEW STAIR PERSPECTIVE  
A1



7 NEW STAIR PERSPECTIVE  
BASEMENT 1  
A1



8 NEW STAIR PERSPECTIVE  
BASEMENT 2  
A1



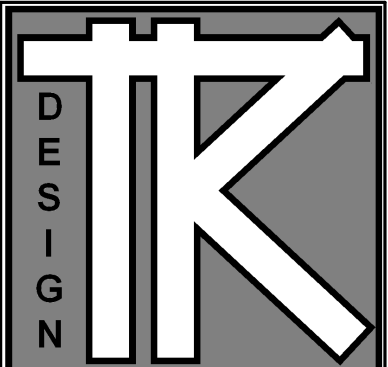
3 NEW STAIR PERSPECTIVE  
ENTRY  
A1



4 NEW STAIR PERSPECTIVE  
LIVING ROOM  
A1



5 NEW STAIR PERSPECTIVE  
KITCHEN  
A1



TODD KNUTSON DESIGN  
530 NORTH BRD ST.  
SUITE 530  
MINNEAPOLIS, MN. 55401  
PHONE: 612-332-2000  
X25  
FAX: 612-332-7504  
CELL: 612-251-1041

**FILING REMODELING**

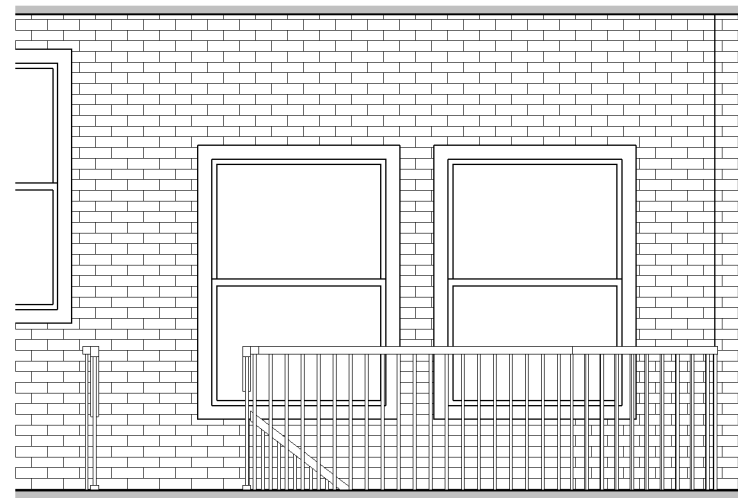
756 DAYTON AVE.  
APT. 2  
SAINT PAUL, MN. 55104-7201

JOB NO: 756

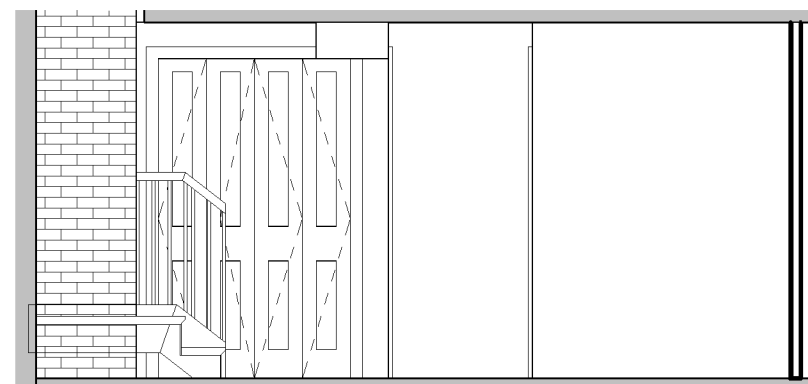
SHEET NO:

**A2**

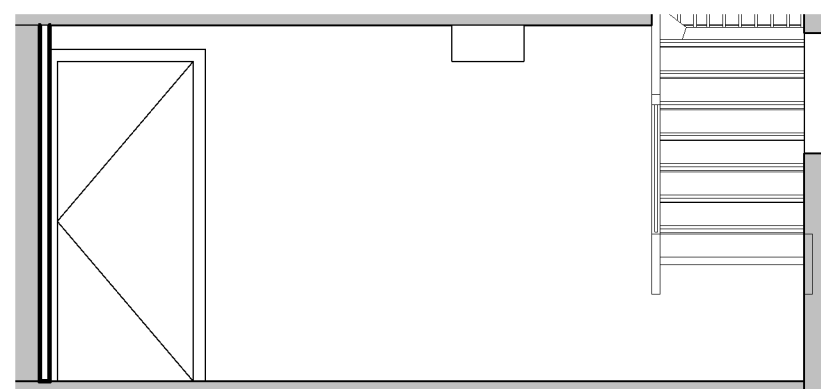
PLANS



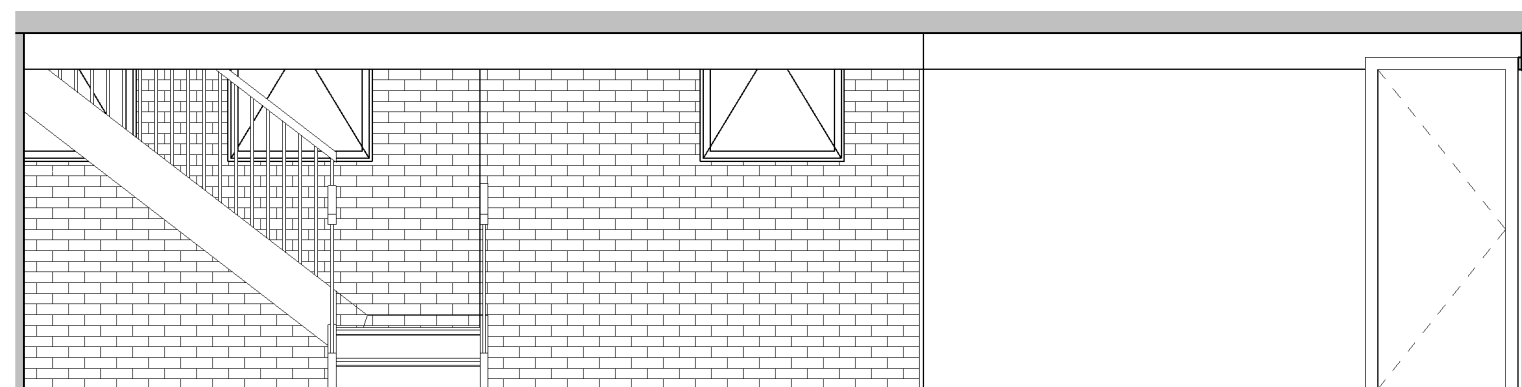
3 DINING ROOM EAST  
A2 1/4" = 1'-0"



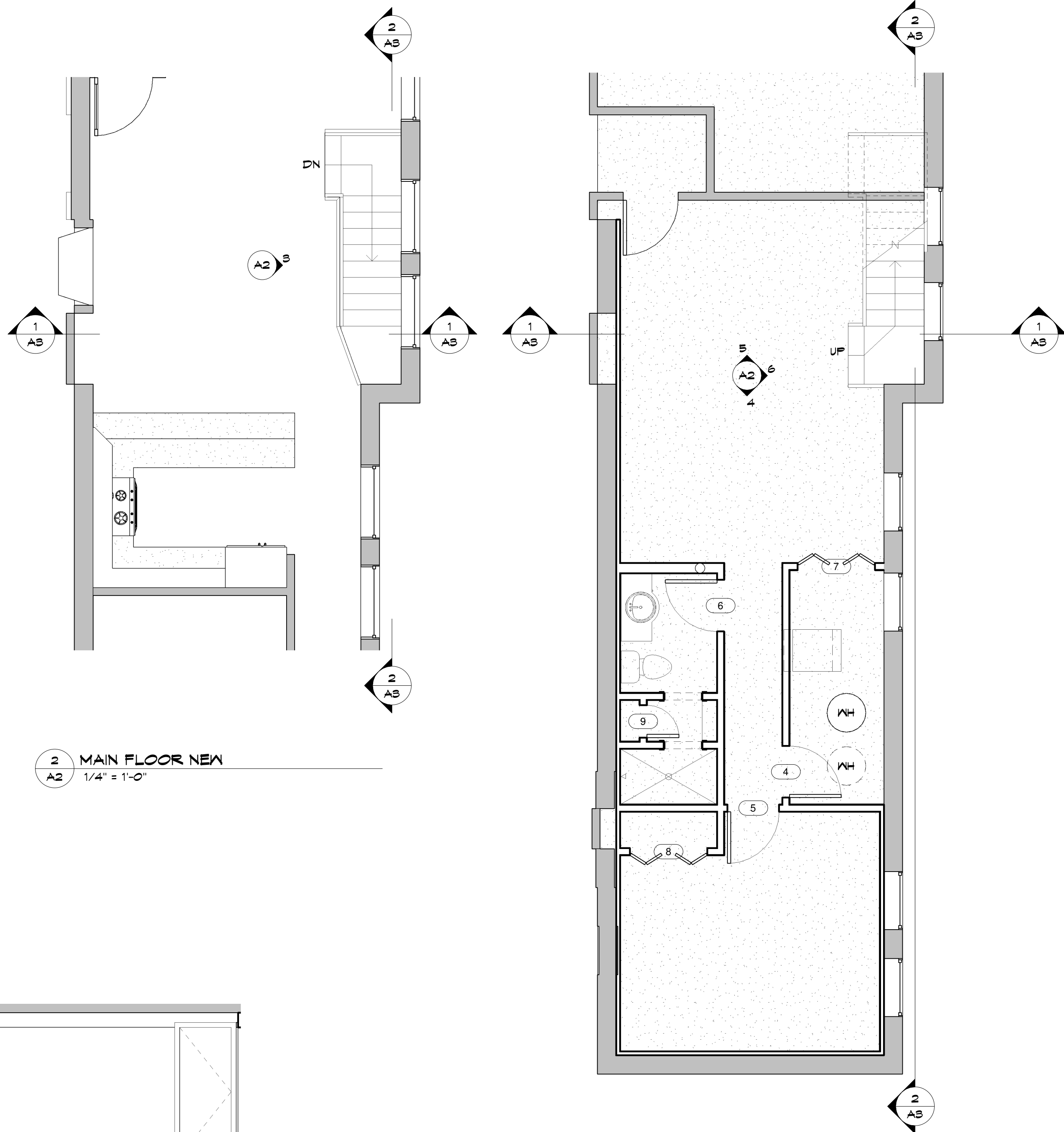
4 Elevation 1 - c  
A2 1/4" = 1'-0"



5 Elevation 2 - a  
A2 1/4" = 1'-0"



6 Elevation 2 - b  
A2 1/4" = 1'-0"

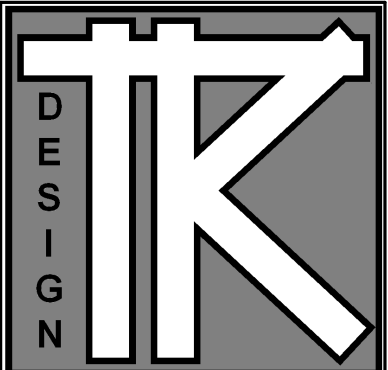


2 MAIN FLOOR NEW  
A2 1/4" = 1'-0"

1 LOWER LEVEL NEW  
A2 1/4" = 1'-0"

DATE: 7-14-05

REVISIONS:



TODD KNUTSON DESIGN  
530 NORTH BRD ST.  
SUITE 530  
MINNEAPOLIS, MN. 55401  
PHONE: 612-332-2000  
X25  
FAX: 612-332-7504  
CELL: 612-251-1041

**FILING REMODELING**

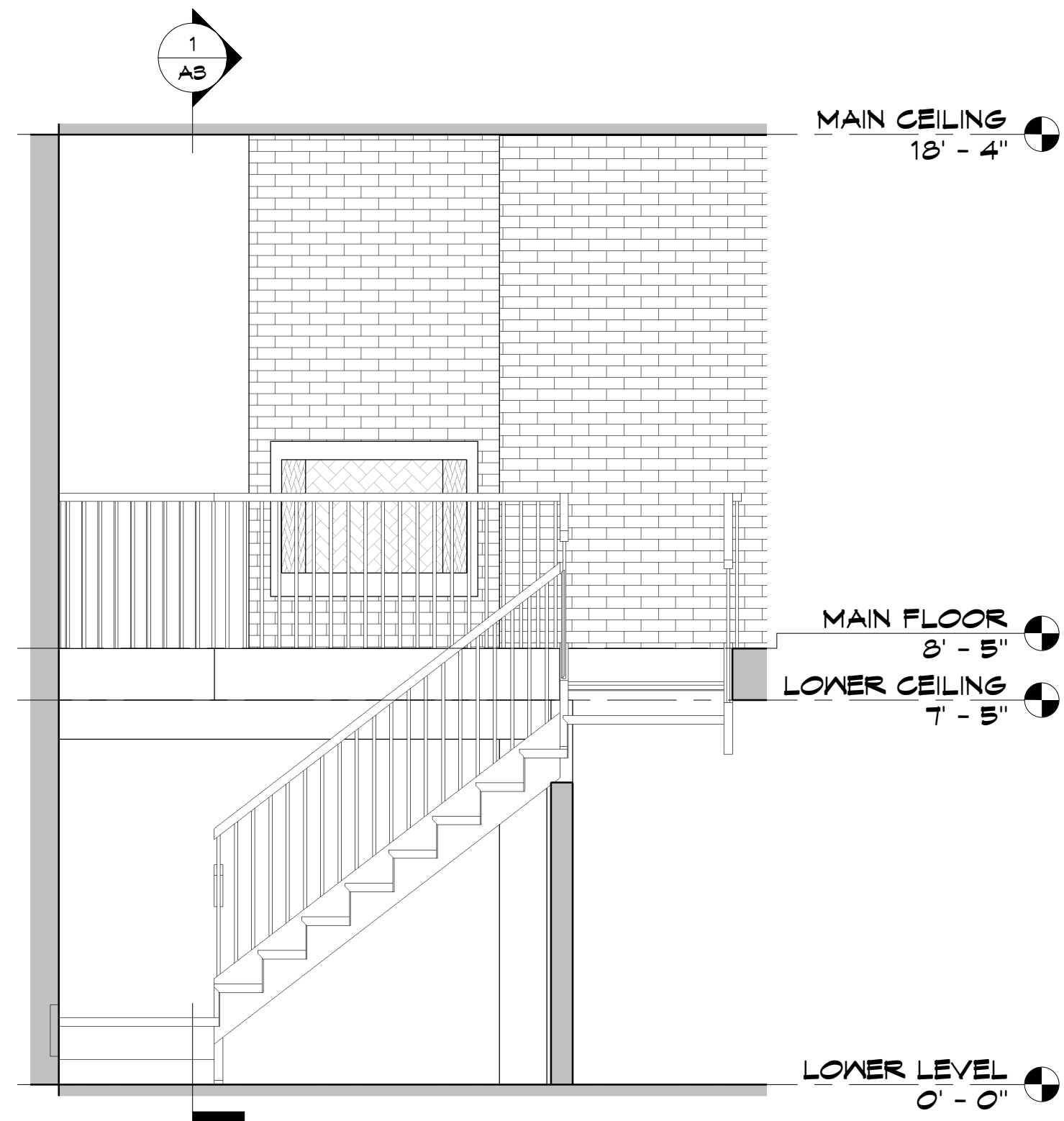
756 DAYTON AVE.  
APT. 2  
SAINT PAUL, MN. 55104-7201

JOB NO: 756

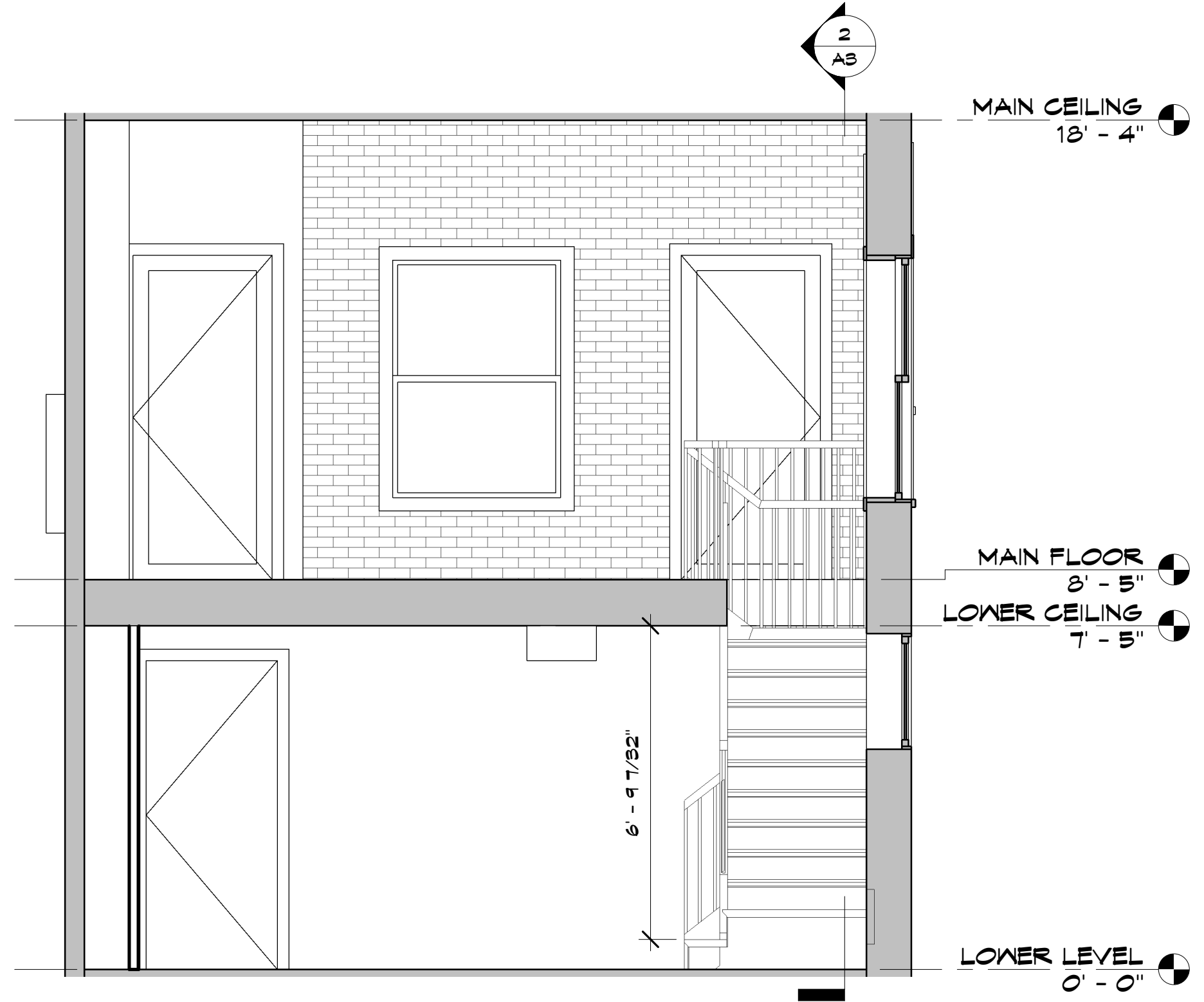
SHEET NO:

**A3**

SECTIONS



2 BUILDING SECTION 2  
3/8" = 1'-0"



1 BUILDING SECTION 1  
3/8" = 1'-0"