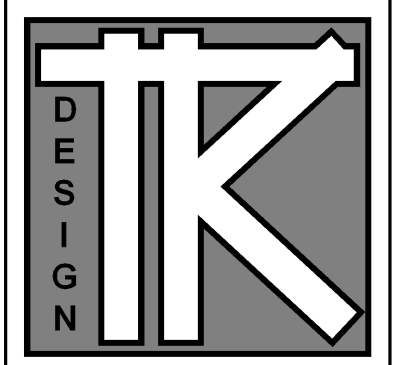


REVISED KITCHEN
3-8-10
FINAL PLOT
3-15-10

DATE: 1-11-09
REVISIONS:
ISSUED FOR FINAL
REVIEW 2-15-09
ISSUED FOR PERMIT
2-24-09



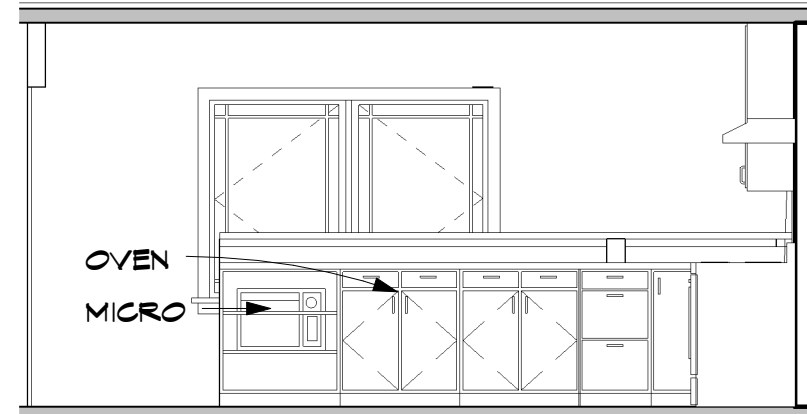
TODD KNUTSON DESIGN
40 SOUTH 7TH STREET
STUDIO 212-156
MINNEAPOLIS, MN. 55402
P: 612-251-1041
F: 612-882-4119
WWW.TODDKNUTSONDESIGN.COM

TERMS:
CONTRACTOR TO VERIFY ALL DIMENSIONS, AS BUILT CONDITIONS (IF APPLY) AND SITE CONDITIONS, BEFORE ORDERING MATERIAL OR DEMOLISHING EXISTING STRUCTURES. CONTRACTOR AND ALL SUBS MUST REPORT ANY DISCREPANCIES TO DESIGNER IMMEDIATELY. AS BUILT AND SITE CONDITIONS OFTEN HAVE UNIQUE CONDITIONS THAT CANNOT BE PREDICTED OR FORSEEN AT DESIGN COMPLETION. CONTRACTOR, SUBS AND DESIGNER WILL WORK TOGETHER TO REACH A SOLUTION IF ANY SITUATION MAY ARISE.

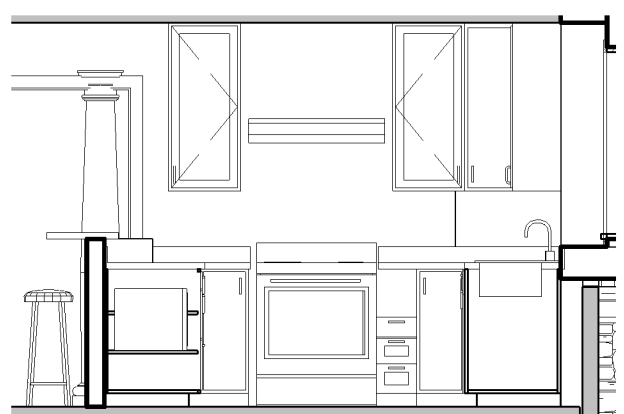
2200 EDGEcombe

JOB NO: 2200

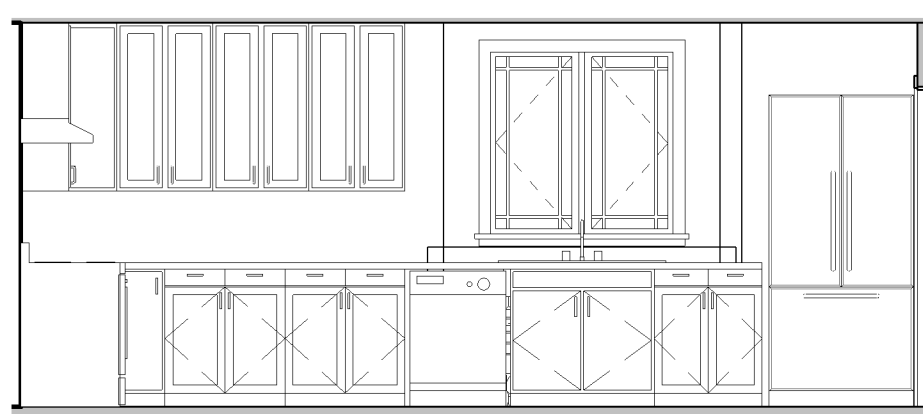
SHEET NO:
A10
INT ELEVATIONS



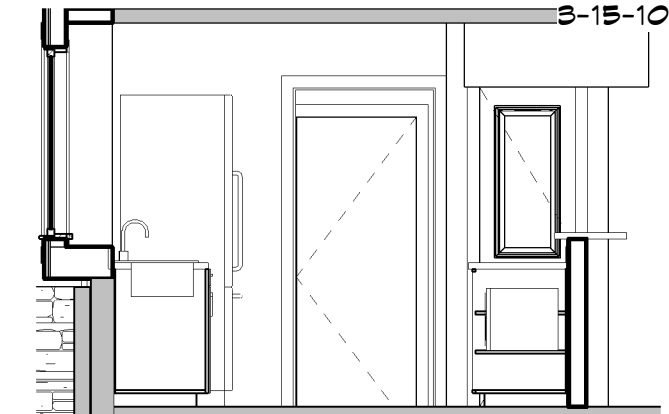
4 KITCHEN SOUTH
A10 1/4" = 1'-0"



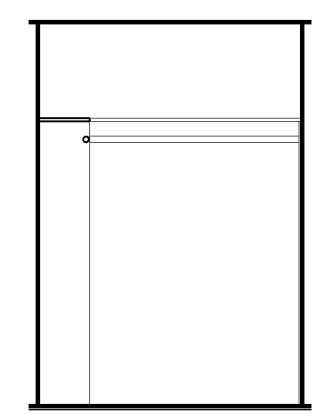
3 KITCHEN WEST
A10 1/4" = 1'-0"



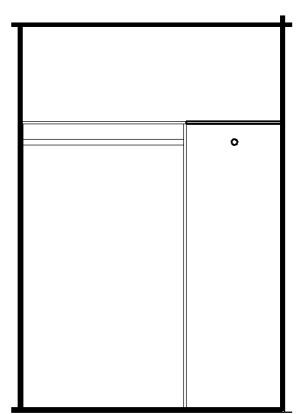
2 KITCHEN NORTH
A10 1/4" = 1'-0"



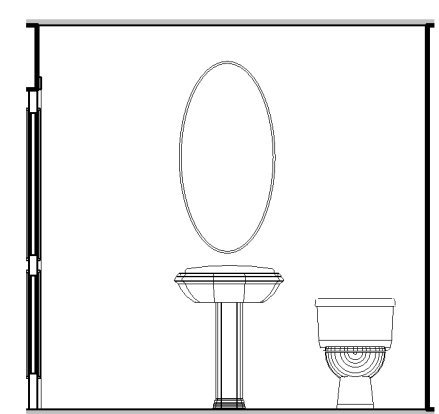
1 KITCHEN EAST
A10 1/4" = 1'-0"



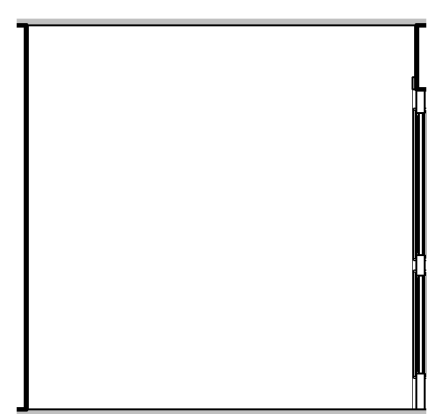
9 CL 202 WEST
A10 1/4" = 1'-0"



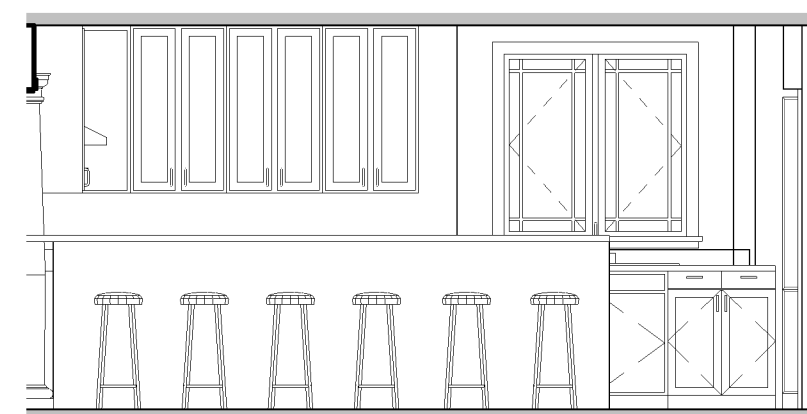
8 CL 202 SOUTH
A10 1/4" = 1'-0"



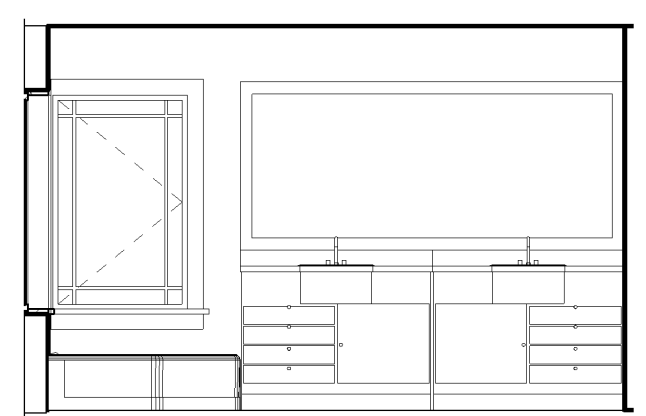
7 PDR 102 NORTH
A10 1/4" = 1'-0"



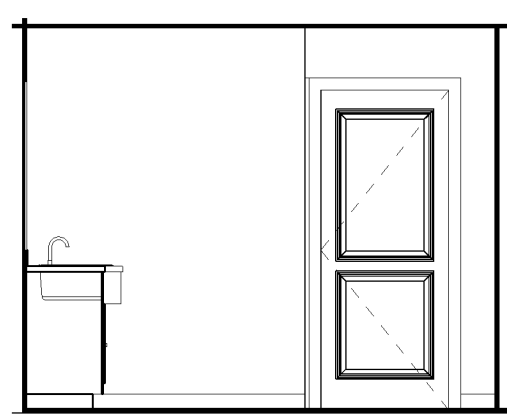
6 PDR 102 SOUTH
A10 1/4" = 1'-0"



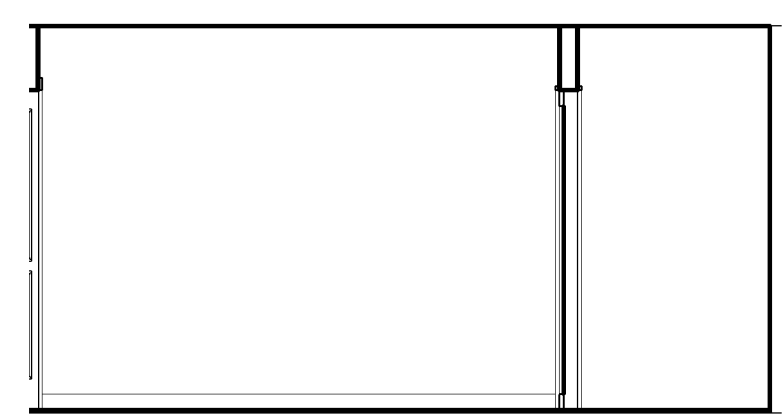
5 KITCHEN ISLAND NORTH
A10 1/4" = 1'-0"



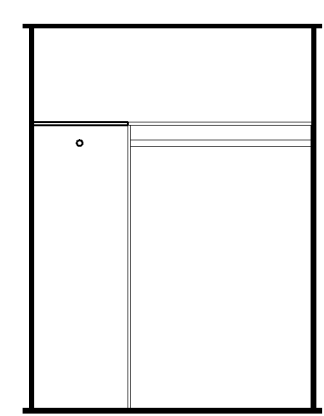
14 BATH 206 WEST
A10 1/4" = 1'-0"



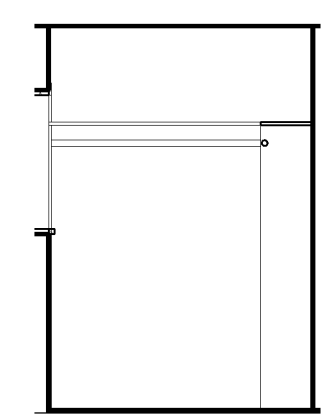
13 BATH 206 NORTH
A10 1/4" = 1'-0"



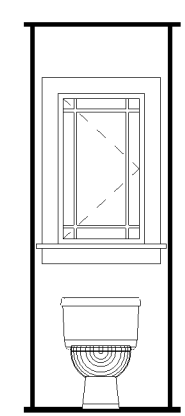
12 BATH 206 EAST
A10 1/4" = 1'-0"



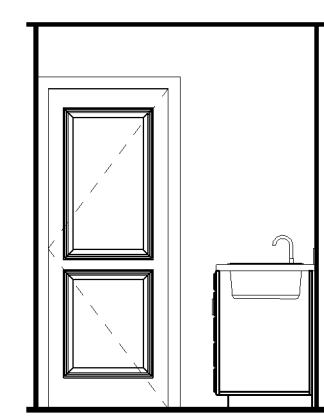
11 CL 204 SOUTH
A10 1/4" = 1'-0"



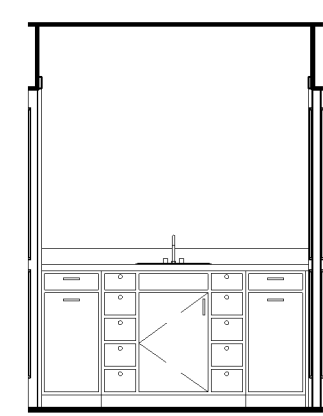
10 CL 204 EAST
A10 1/4" = 1'-0"



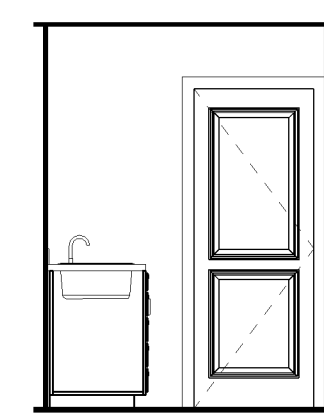
20 W.C. 205 WEST
A10 1/4" = 1'-0"



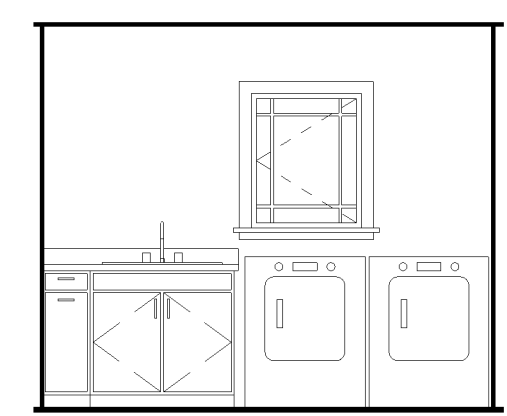
19 BATH 211 SOUTH
A10 1/4" = 1'-0"



18 BATH 211 WEST
A10 1/4" = 1'-0"



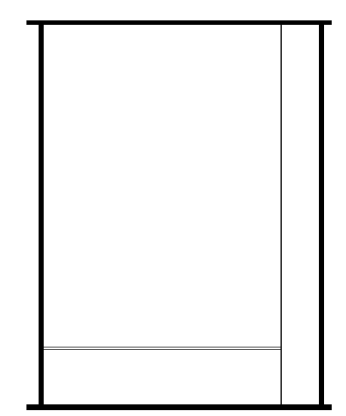
17 BATH 211 NORTH
A10 1/4" = 1'-0"



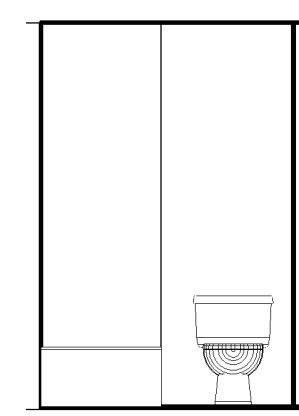
16 LAUNDRY 215 NORTH
A10 1/4" = 1'-0"



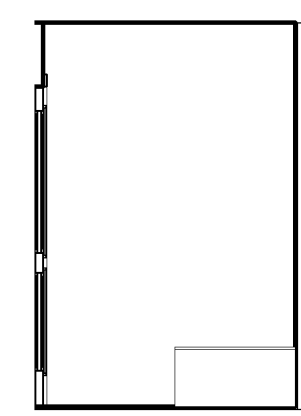
15 BATH 206 SOUTH
A10 1/4" = 1'-0"



23 W.C. 212 SOUTH
A10 1/4" = 1'-0"



22 W.C. 212 WEST
A10 1/4" = 1'-0"



21 W.C. 212 EAST
A10 1/4" = 1'-0"