

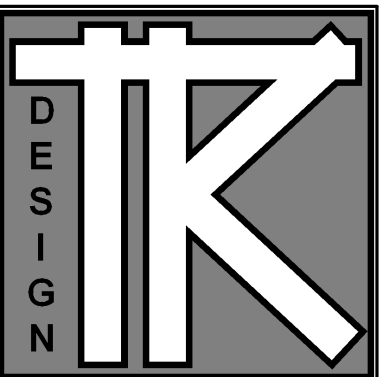
DATE: 10-2007

REVISIONS:

PRINTED FOR REVIEW
1-9-08

REVISED AND ISSUED
FOR REVIEW ONLY
9-24-08

REVISED 12-15-08

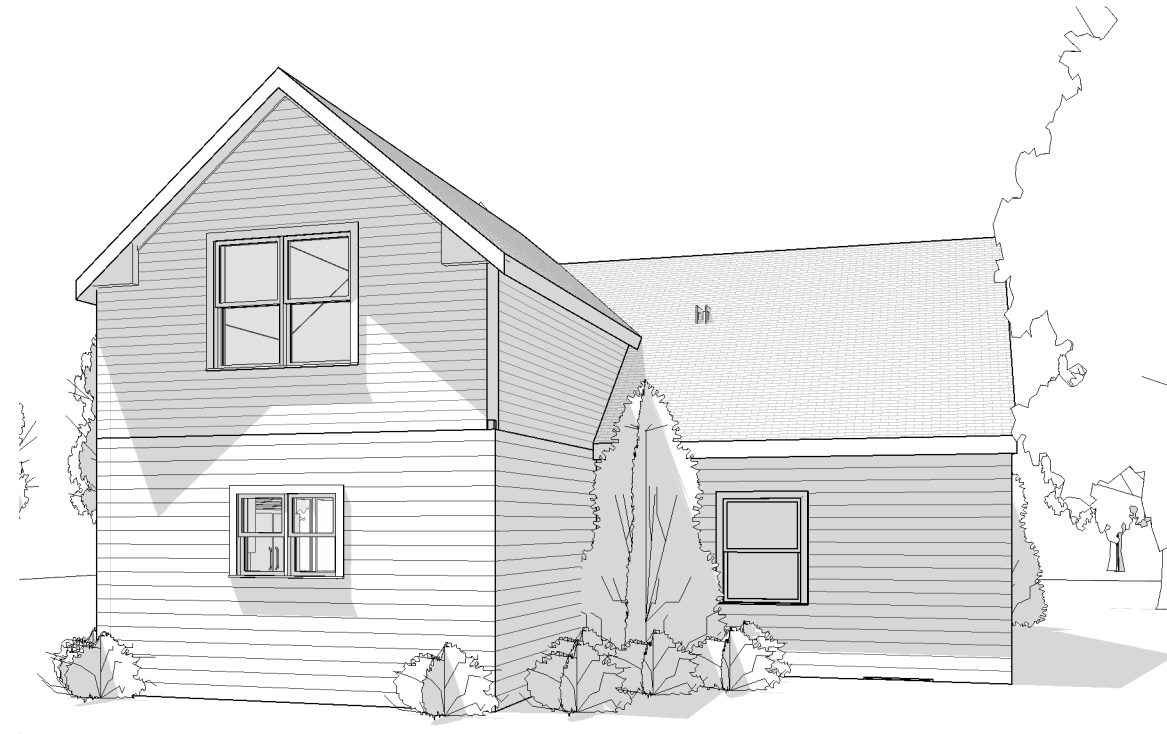


TODD KNUTSON DESIGN

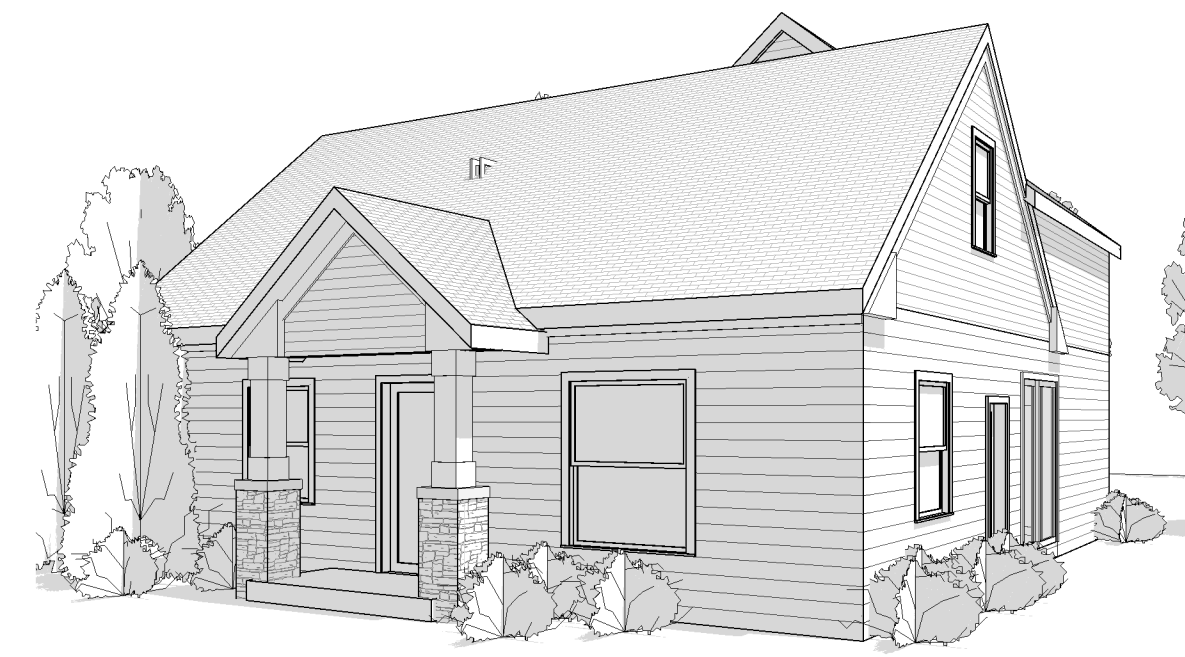
530 NORTH 3RD ST.
SUITE 530
MINNEAPOLIS, MN. 55401
N: 612-332-8000 X25
F: 612-332-7504
M: 612-251-1041



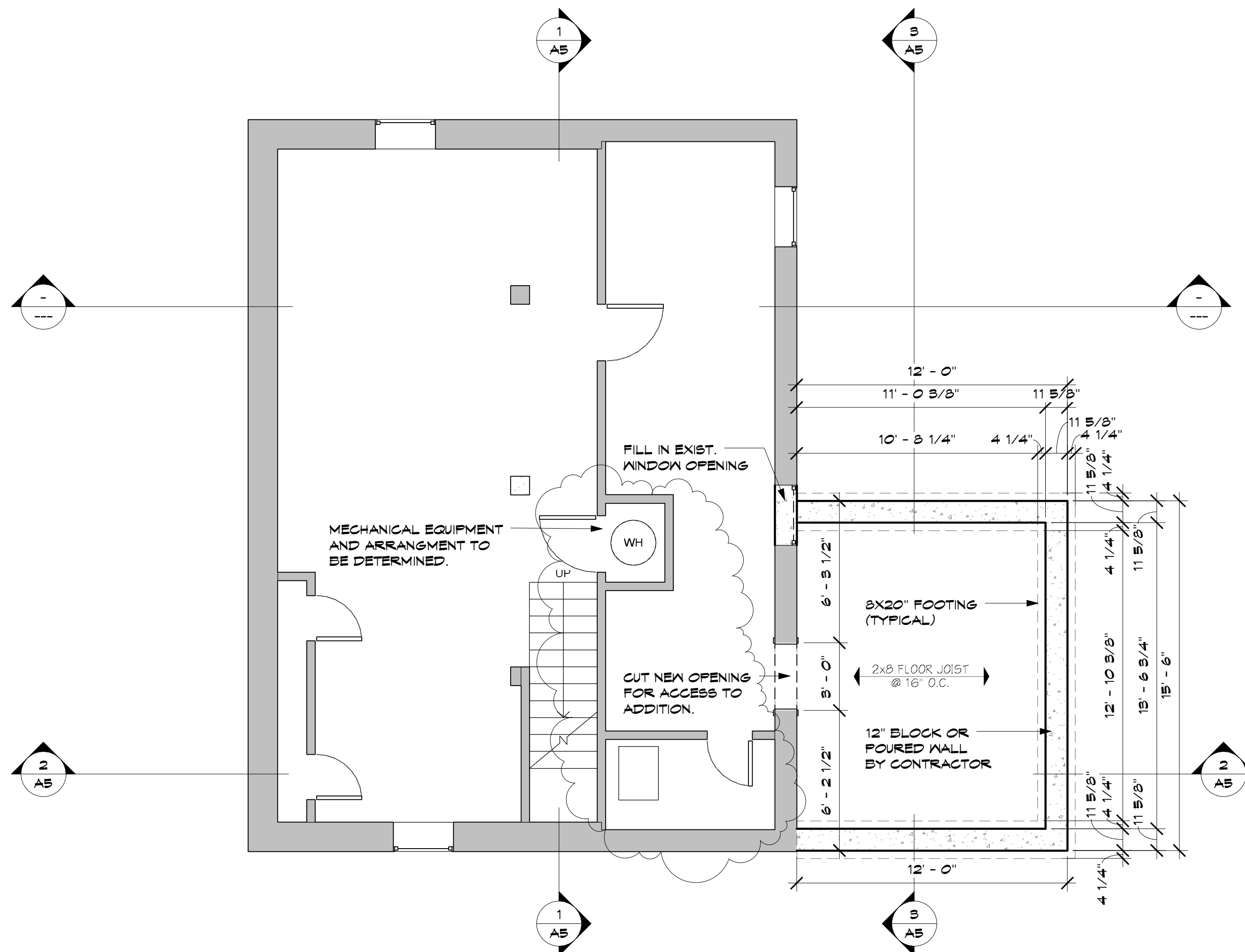
4 SITE 3
AO



3 SITE 2
AO



2 SITE 1
AO



1 LOWER FLOOR
AO 1/4" = 1'-0"

12/16/2008 1:06:22 AM

LUCHEY ADDITION

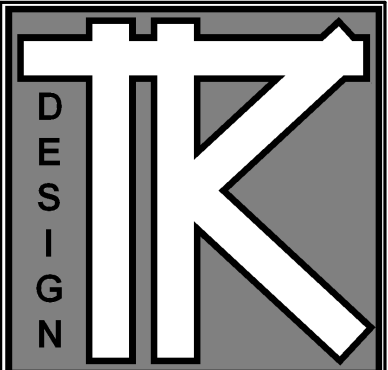
5837 Morgan Av. So.
Minneapolis, MN.

JOB NO: 5837

SHEET NO:

A0

LOWER LEVEL



TODD KNUTSON DESIGN

530 NORTH 3RD ST.
SUITE 530
MINNEAPOLIS, MN. 55401
N: 612-332-8000 X25
F: 612-332-7504
M: 612-251-1041

LUCEY ADDITION

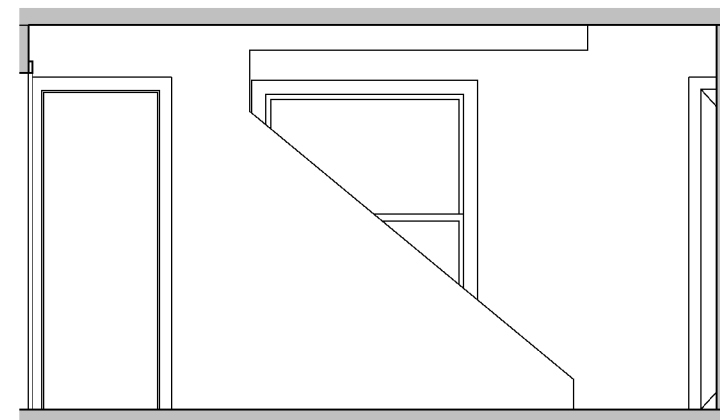
5837 Morgan Av. So.
Minneapolis, MN.

JOB NO: 5837

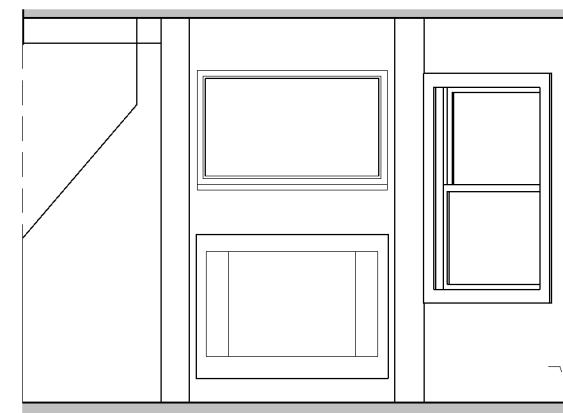
SHEET NO:

A1

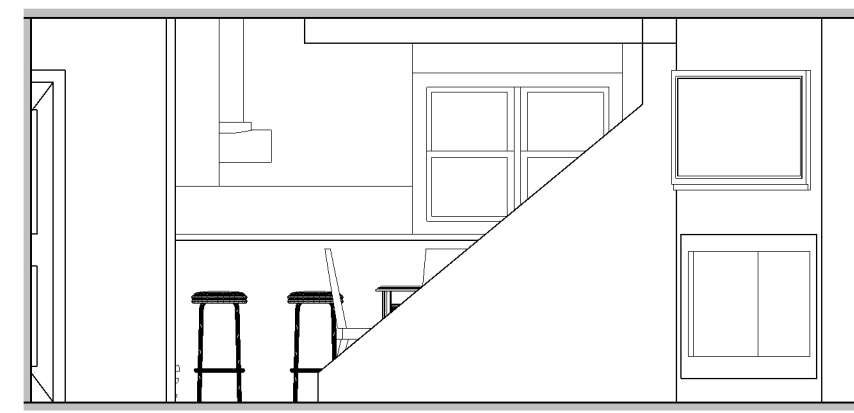
FLOOR PLANS



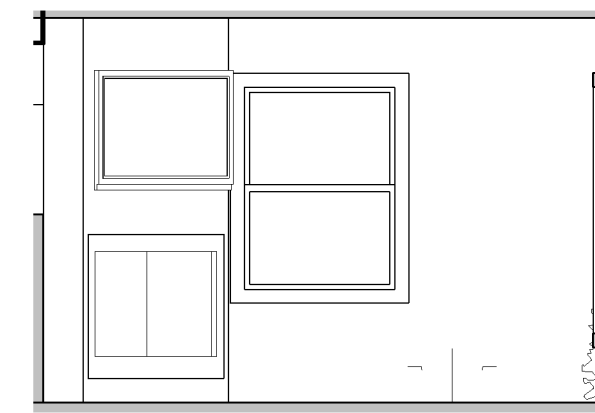
5 DINING ROOM WEST
A1 1/4" = 1'-0"



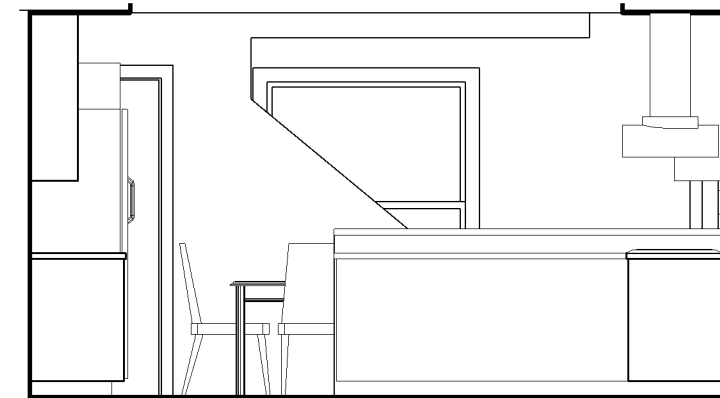
4 FT FRONT
A1 1/4" = 1'-0"



3 LIVING ROOM EAST
A1 1/4" = 1'-0"



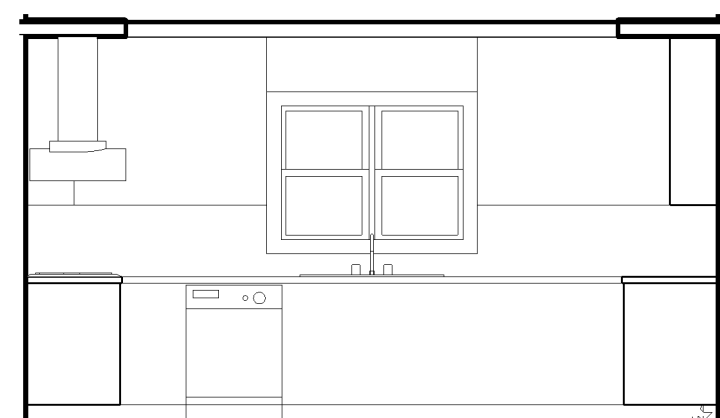
1 LIVING ROOM SOUTH
A1 1/4" = 1'-0"



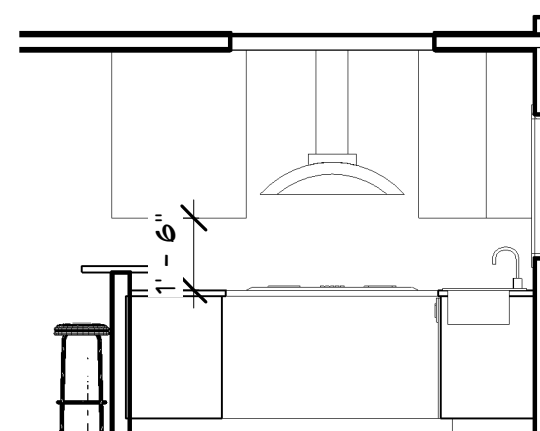
6 KITCHEN WEST
A1 1/4" = 1'-0"



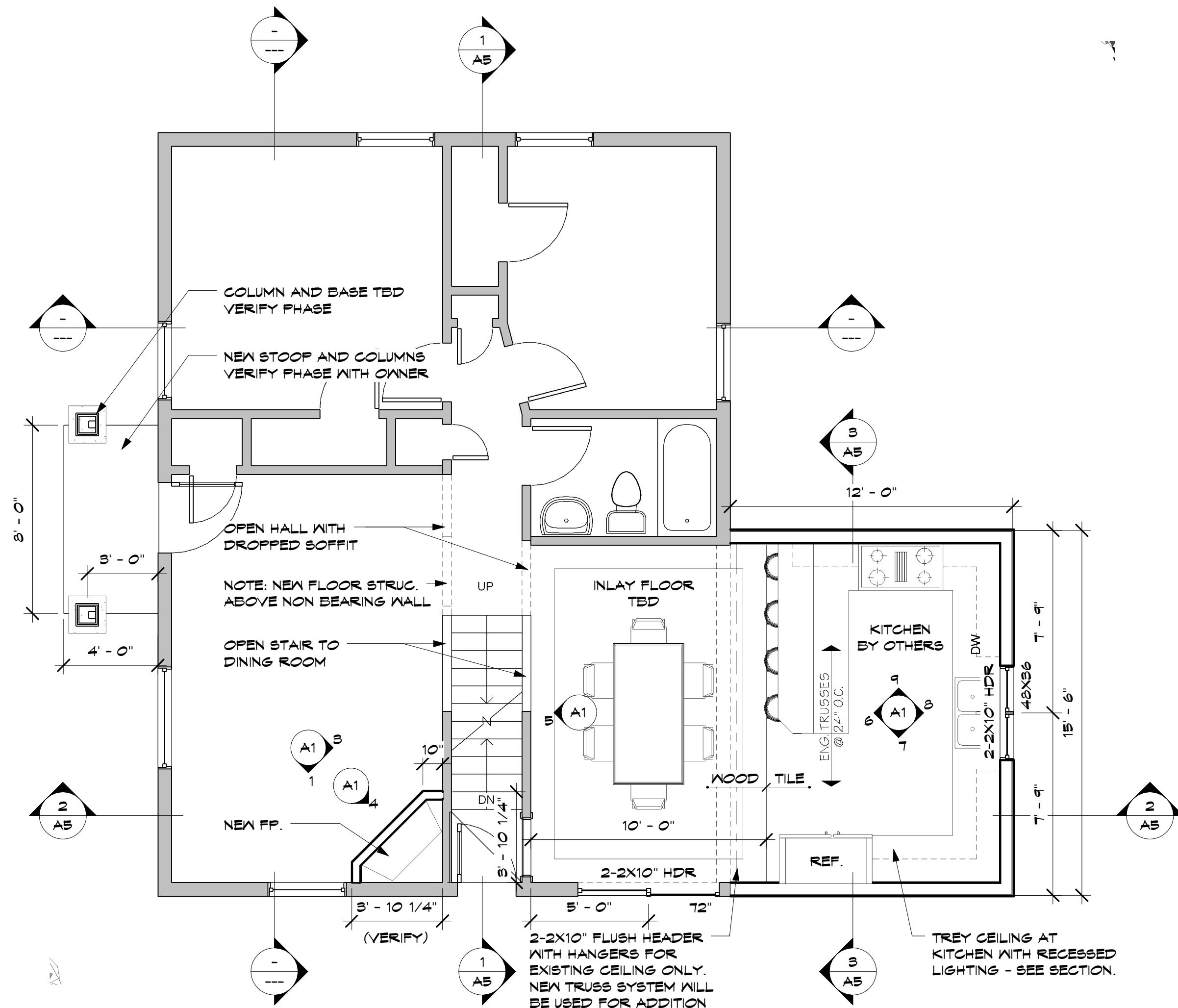
7 KITCHEN SOUTH
A1 1/4" = 1'-0"



8 KITCHEN EAST
A1 1/4" = 1'-0"



9 KITCHEN NORTH
A1 1/4" = 1'-0"



2 MAIN FLOOR
A1 1/4" = 1'-0"

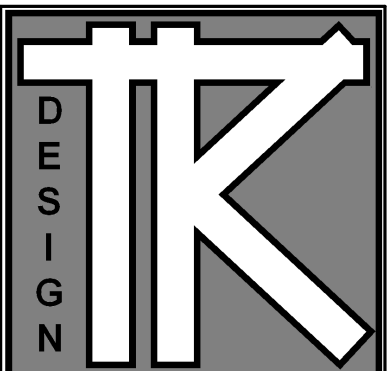
DATE: 10-2007

REVISIONS:

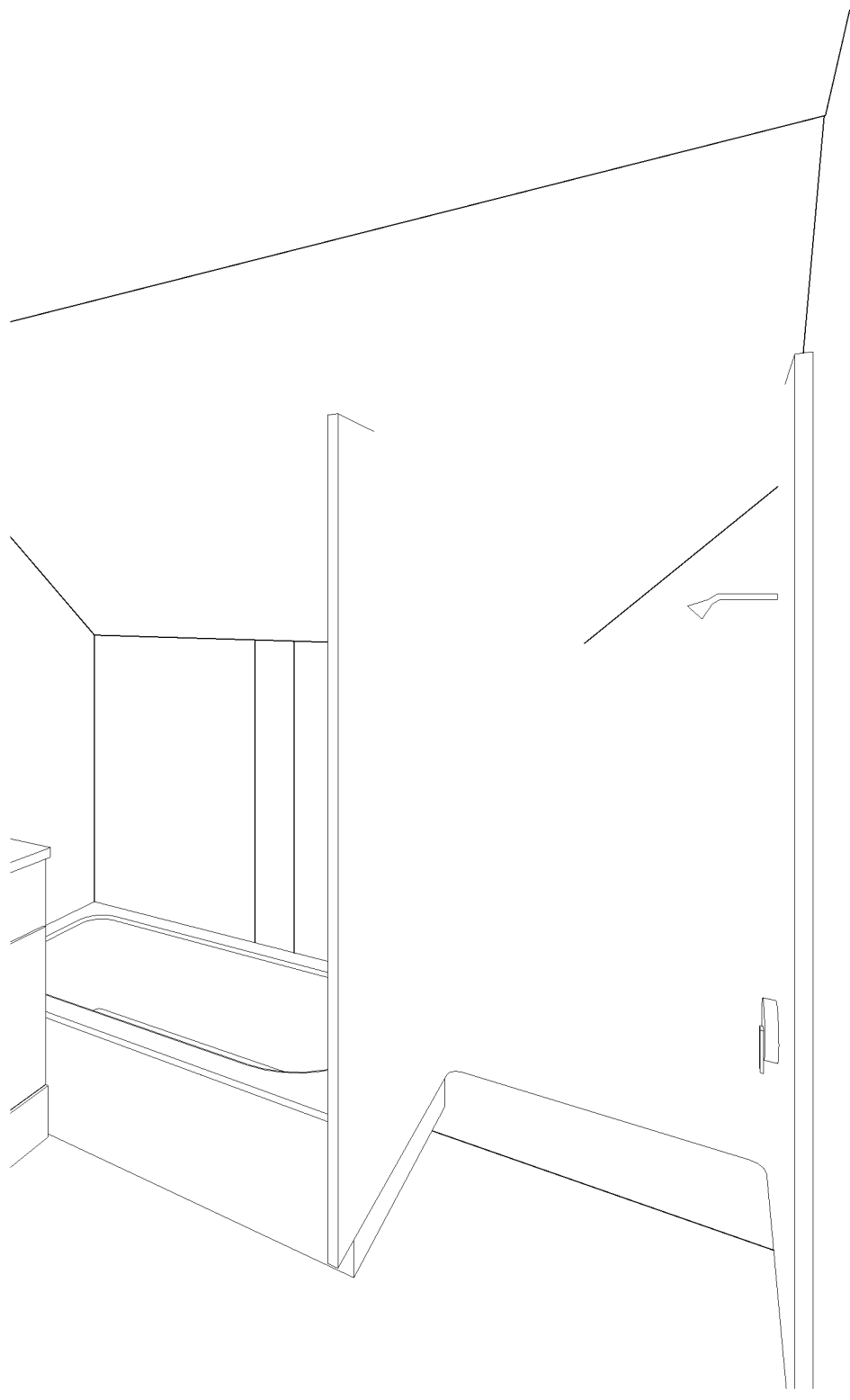
PRINTED FOR REVIEW
1-9-08

REVISED AND ISSUED
FOR REVIEW ONLY
9-24-08

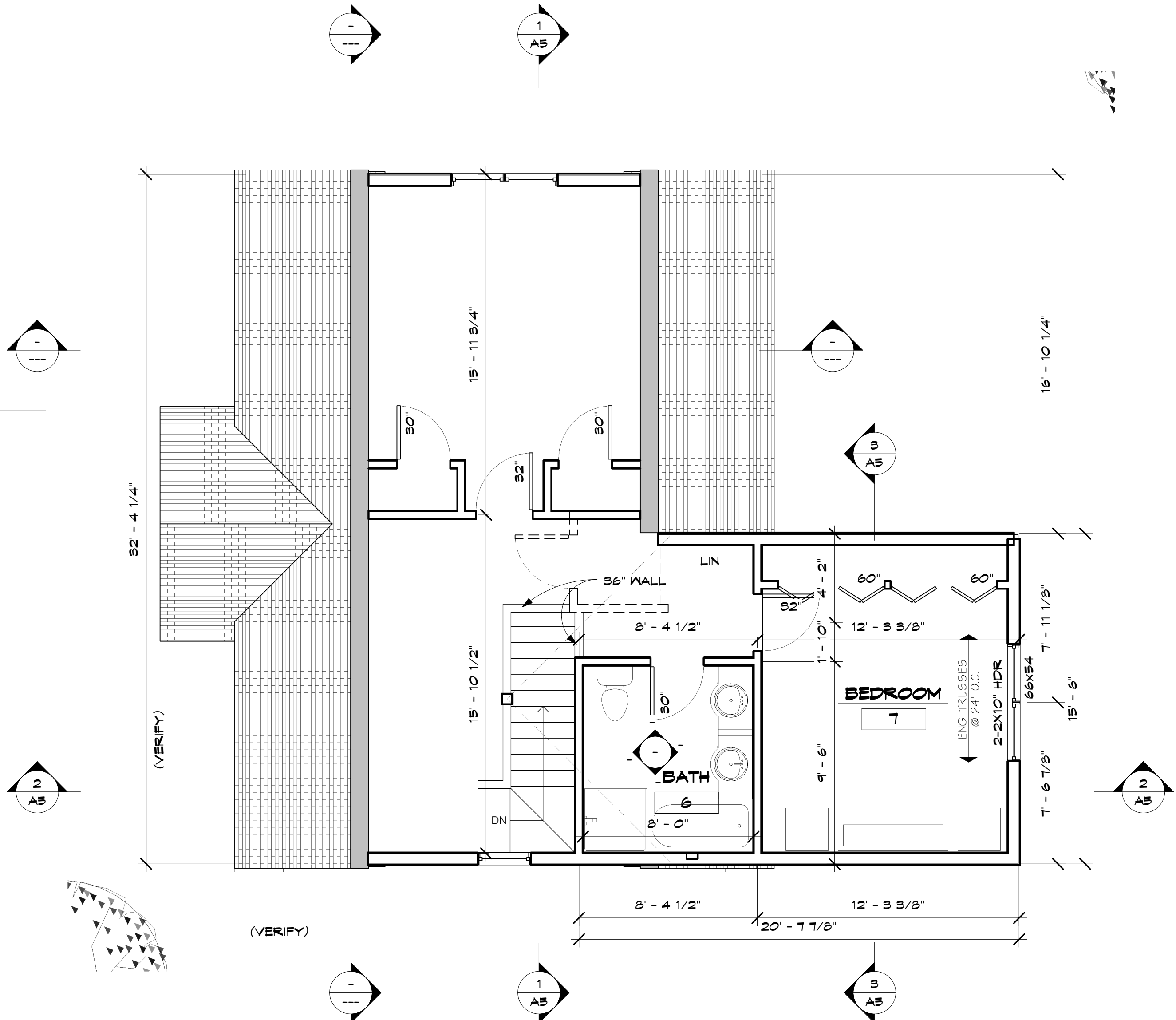
REVISED 12-15-08



TODD KNUTSON DESIGN
530 NORTH BRD ST.
SUITE 530
MINNEAPOLIS, MN. 55401
PHONE: 612-332-8000
X25
FAX: 612-332-7504
CELL: 612-251-1041



2 3D View 1
A2



1 NEW UPPER FLOOR
A2 1/4" = 1'-0"

12/16/2008 1:06:25 AM

LUCEY ADDITION

5837 Morgan Av. So.
Minneapolis, MN.

JOB NO: 5837

SHEET NO:

A2

FLOOR PLANS

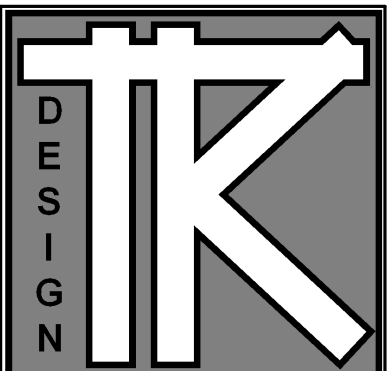
DATE: 10-2007

REVISIONS:

PRINTED FOR REVIEW
1-9-08

REVISED AND ISSUED
FOR REVIEW ONLY
9-24-08

REVISED 12-15-08



TODD KNUTSON DESIGN
530 NORTH 3RD ST.
SUITE 530
MINNEAPOLIS, MN. 55401
PHONE: 612-332-2000
X25
FAX: 612-332-7504
CELL: 612-251-1041



1 West
AS 1/4" = 1'-0"



2 South
AS 1/4" = 1'-0"

LUCEY ADDITION

5837 Morgan Av. So.
Minneapolis, MN.

JOB NO: 5837

SHEET NO:

A3

ELEVATIONS

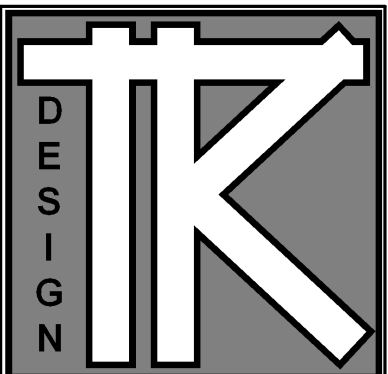
DATE: 10-2007

REVISIONS:

PRINTED FOR REVIEW
1-9-08

REVISED AND ISSUED
FOR REVIEW ONLY
9-24-08

REVISED 12-15-08



TODD KNUTSON DESIGN
530 NORTH BRD ST.
SUITE 530
MINNEAPOLIS, MN. 55401
PHONE: 612-332-8000
X25
FAX: 612-332-7504
CELL: 612-251-1041

LUCHEY ADDITION

5837 Morgan Av. So.
Minneapolis, MN.

JOB NO: 5837

SHEET NO:

A4

ELEVATIONS



1 East
A4 1/4" = 1'-0"



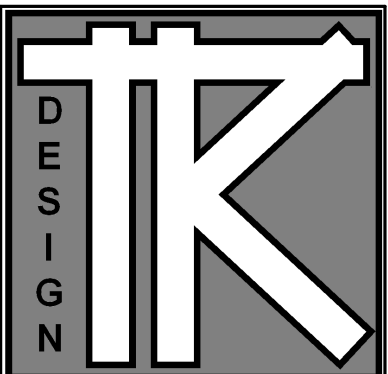
2 North
A4 1/4" = 1'-0"

DATE: 10-2007

REVISIONS:

PRINTED FOR REVIEW
1-9-08

REVISED AND ISSUED
FOR REVIEW ONLY
9-24-08
REVISED 12-15-08



TODD KNUTSON DESIGN

530 NORTH 3RD ST.
SUITE 530
MINNEAPOLIS, MN. 55401
N: 612-332-8000 X25
F: 612-332-7504
M: 612-251-1041

LUCEY ADDITION

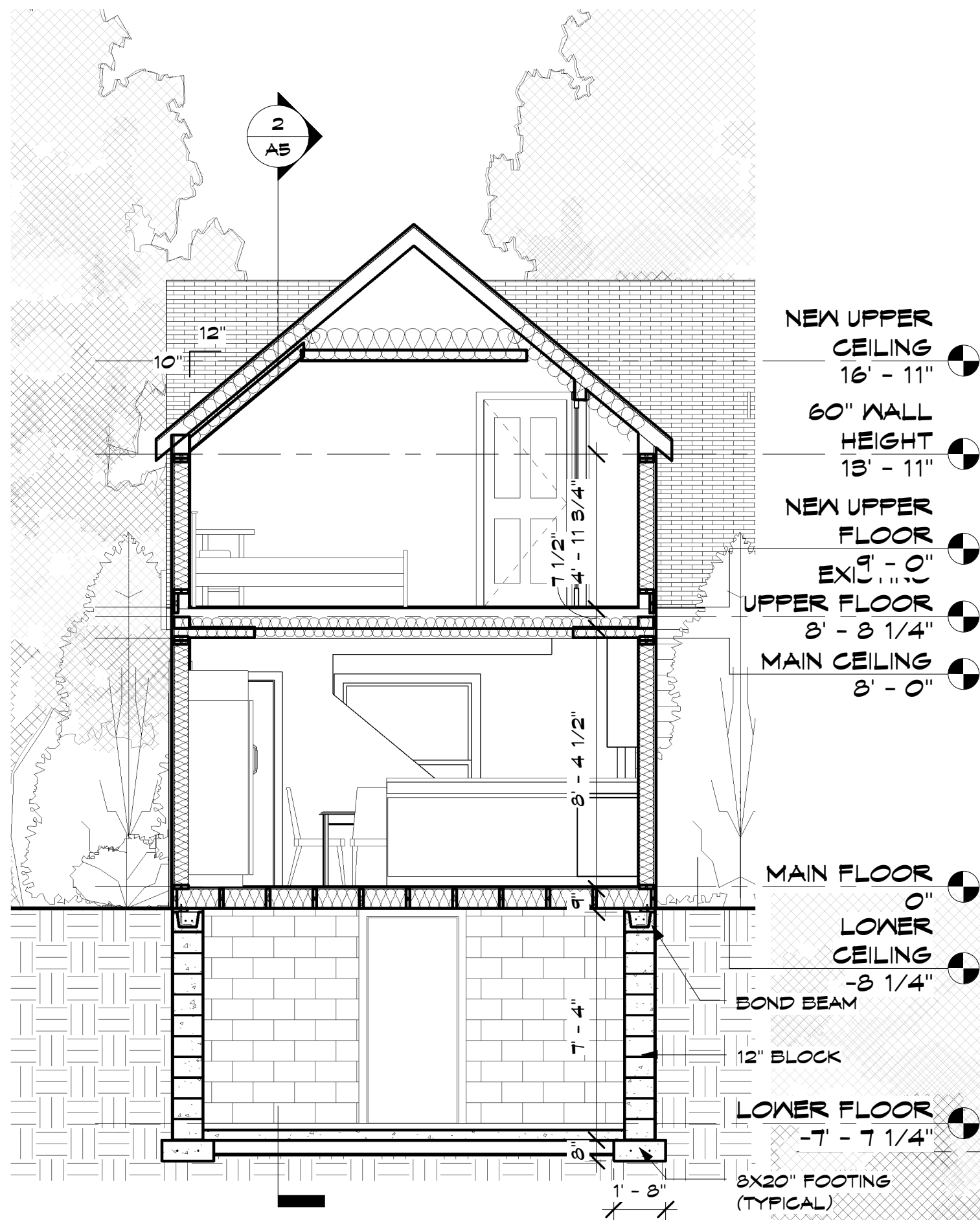
5837 Morgan Av. So.
Minneapolis, MN.

JOB NO: 5837

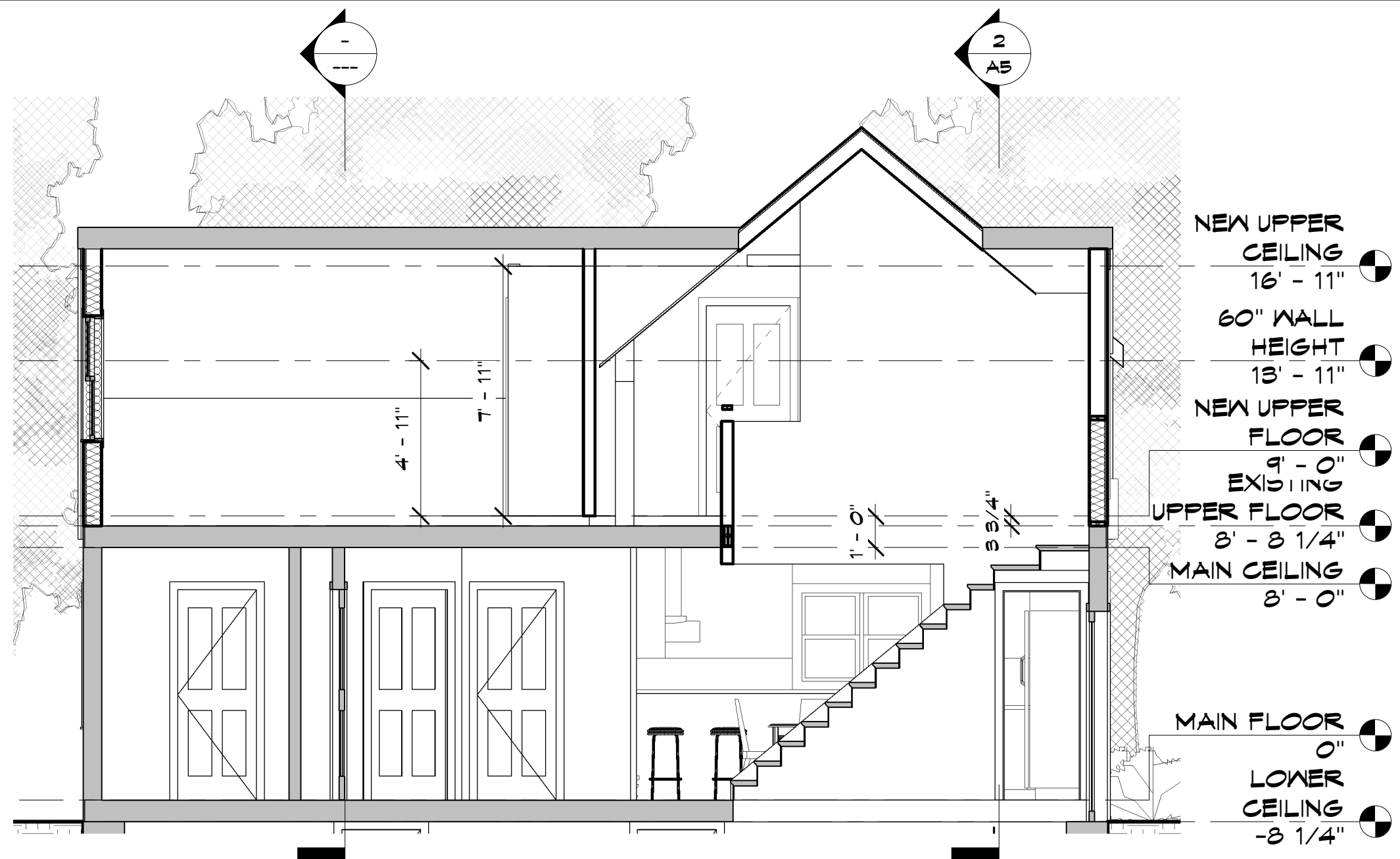
SHEET NO:

A5

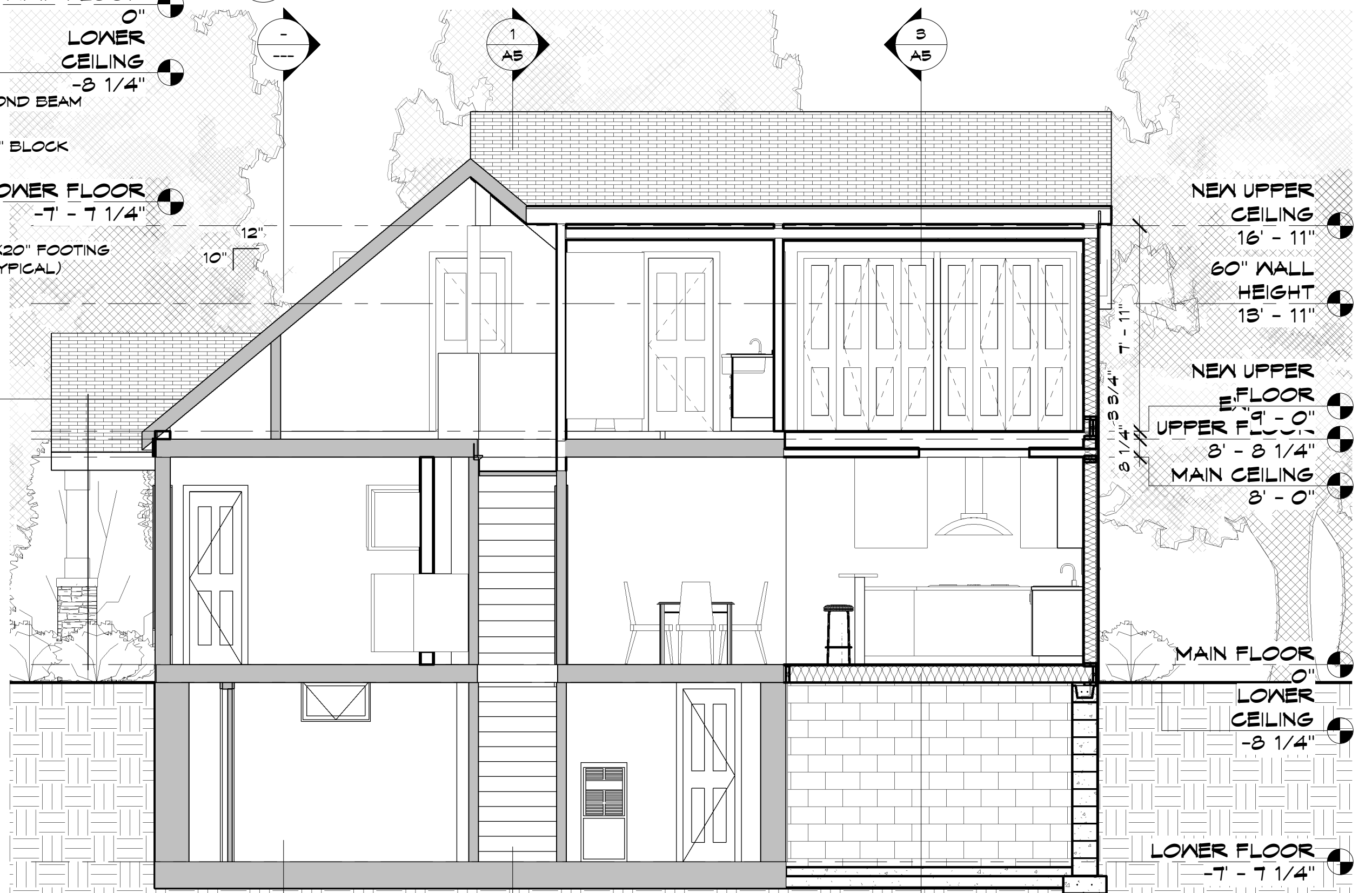
SECTIONS



2 ADDITION BUILDING SECTION
A5 1/4" = 1'-0"



1 SECTION AT MAIN STAIR
A5 1/4" = 1'-0"



3 BUILDING SECTION AT STAIR EAST - WEST
A5 1/4" = 1'-0"