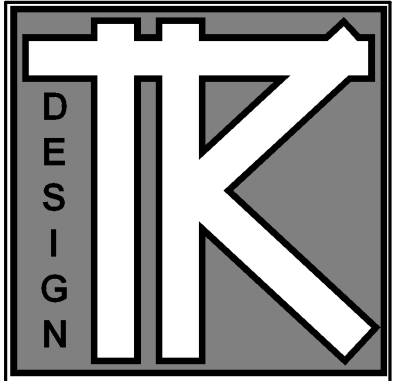


REVISED / ISSUED FOR REVIEW 3-2-09
 REVISED / ISSUED FOR REVIEW 3-13-09
 REVISED / ISSUED FOR CONST. 3-27-09

DATE: 7-1-08
 REVISIONS:
 ISSUED FOR REVIEW & BID 7-13-08
 ISSUED FOR REVIEW & BID 7-22-08
 ISSUED FOR FINAL REVIEW 9-3-08
 ISSUED FOR FINAL REVIEW 9-10-08
 ISSUED 10-1-08



TODD KNUTSON DESIGN
 2388 UNIVERSITY AV. N.
 STUDIO 100
 SAINT PAUL, MN. 55114
 PHONE: 651-472-0054
 FAX: 651-472-0060
 MOBIL: 612-251-1041

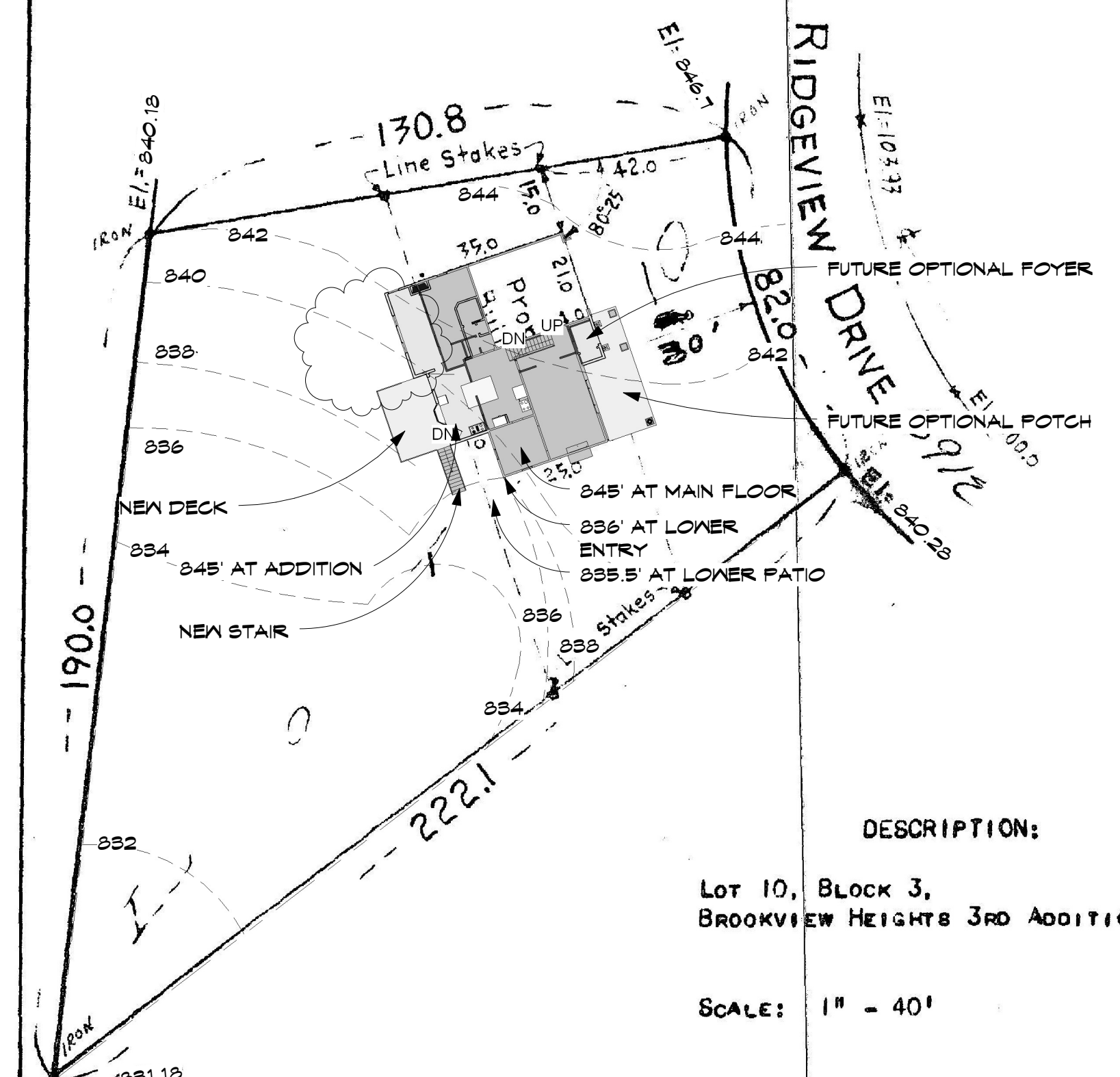
12575

EGAN, FIELD & NOWAK
 SURVEYORS

129 WEST LAKE STREET
 ESTAB. 1872
 MINNEAPOLIS 8, MINN.

CERTIFICATE OF SURVEY

For C. D. JACOBSON



DESCRIPTION:

LOT 10, BLOCK 3,
 BROOKVIEW HEIGHTS 3RD ADDITION.

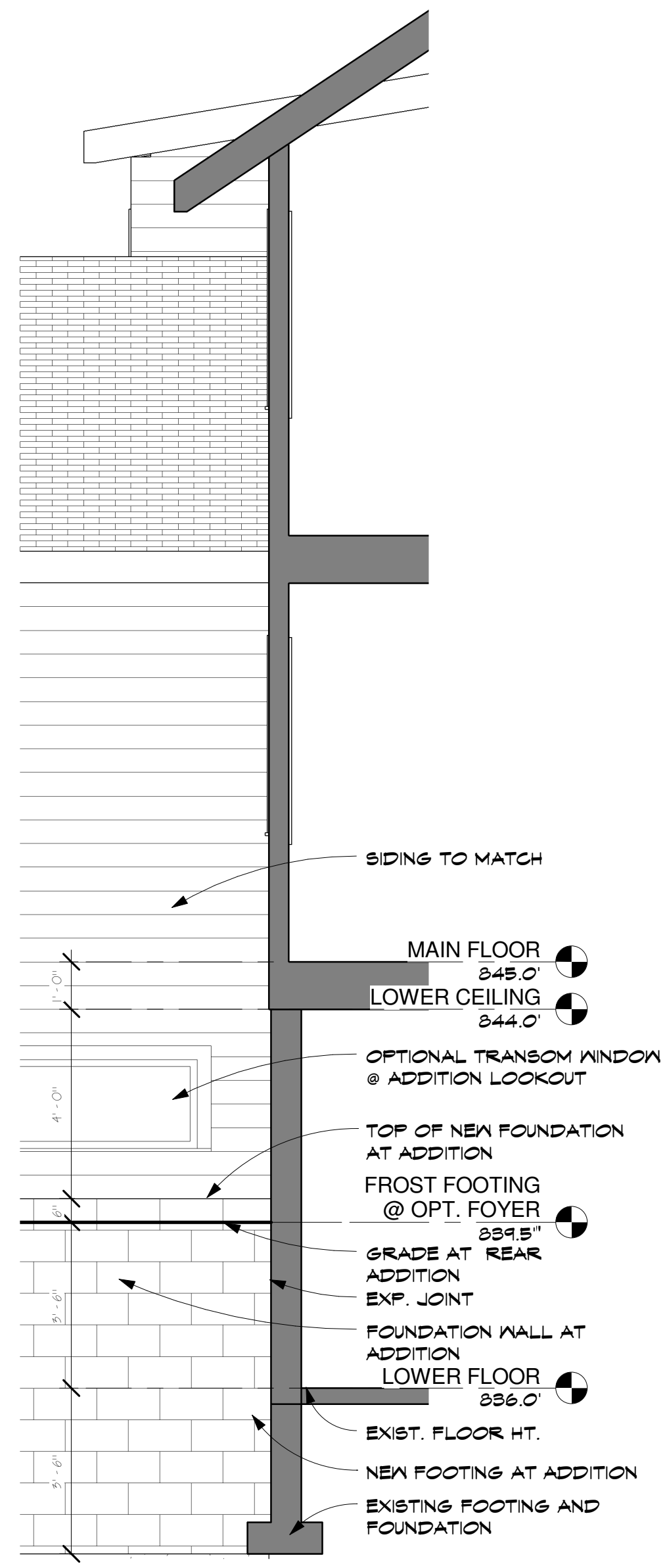
SCALE: 1" = 40'

We hereby certify that this is a true and correct representation of a survey of the boundaries of the land above described and of the location of all buildings, if any, thereon, and all visible encroachments, if any, from or on said land.

Dated this 8TH day of OCTOBER, 1963.

EGAN, FIELD & NOWAK
 Surveyors

File No. 1057 | Book No. 1637 - 59



2 Section 6
 3/8" = 1'-0"

1 Site
 1" = 30'-0"

RUTZEN REMODELING

6912 RIDGVIEW DRIVE
 EDINA, MINNESOTA

JOB NO: 6912

SHEET NO:

A0

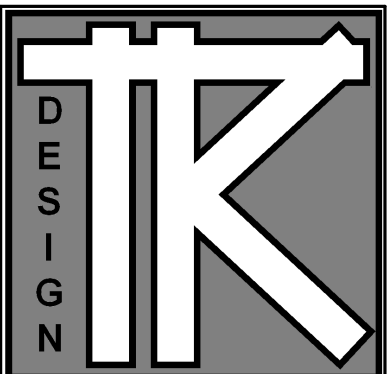
SITE PLAN

REVISED / ISSUED FOR REVIEW 3-2-09
 REVISED / ISSUED FOR REVIEW 3-13-09
 REVISED / ISSUED FOR CONST. 3-27-09

DATE: 7-1-08

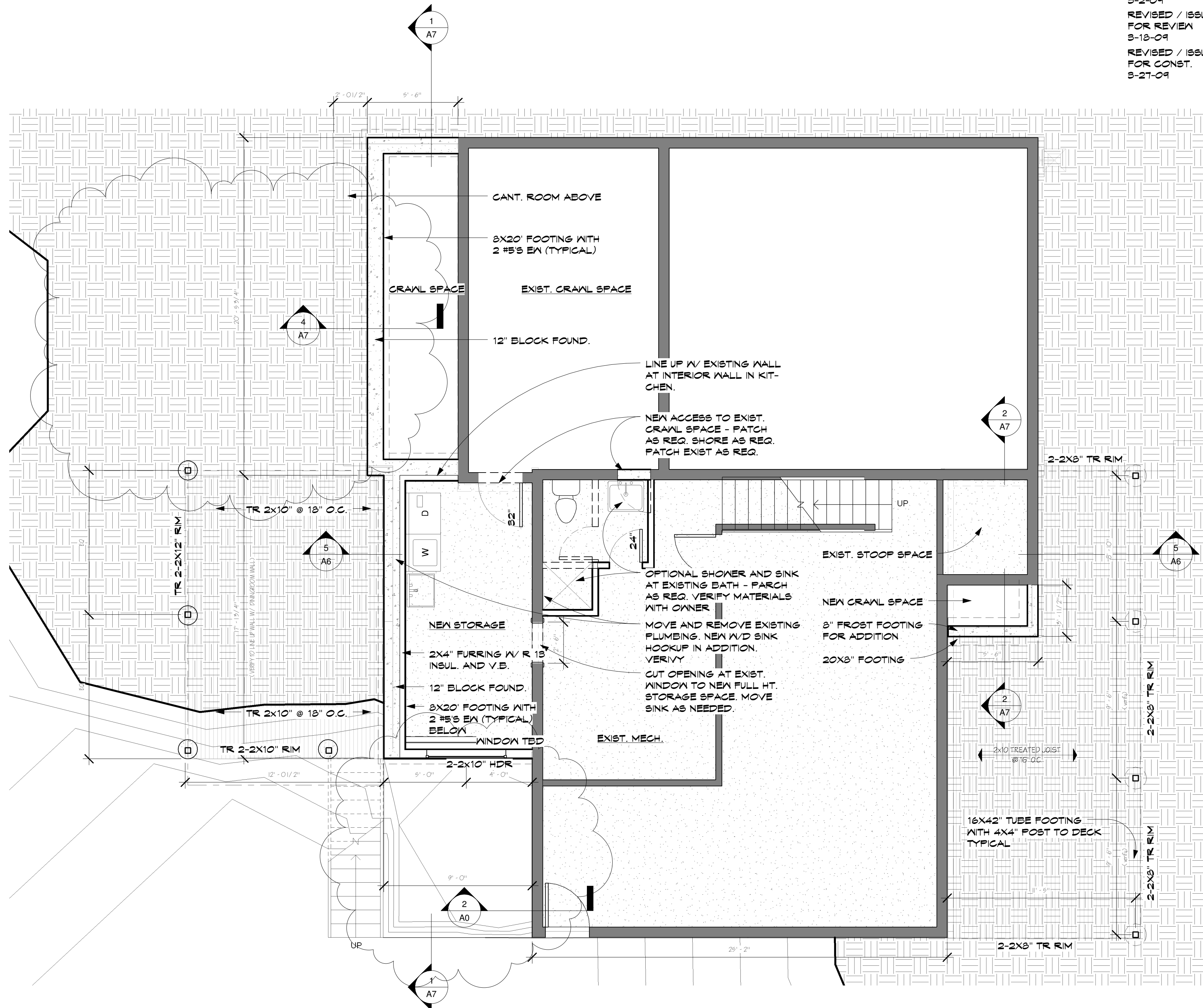
REVISIONS:

ISSUED FOR REVIEW & BID 7-13-08
 ISSUED FOR REVIEW & BID 7-22-08
 ISSUED FOR FINAL REVIEW 9-3-08
 ISSUED FOR FINAL REVIEW 9-10-08
 ISSUED 10-1-08



TODD KNOTSON DESIGN

2383 UNIVERSITY AV. N.
 STUDIO 100
 SAINT PAUL, MN. 55114
 PHONE: 651-472-0054
 FAX: 651-472-0060
 MOBIL: 612-251-1041



1 LOWER FLOOR
 1/4" = 1'-0"

RUTZEN REMODELING

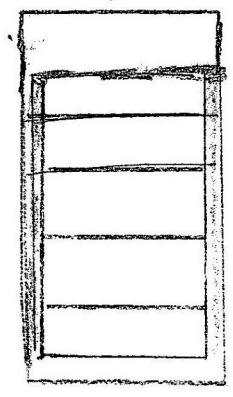
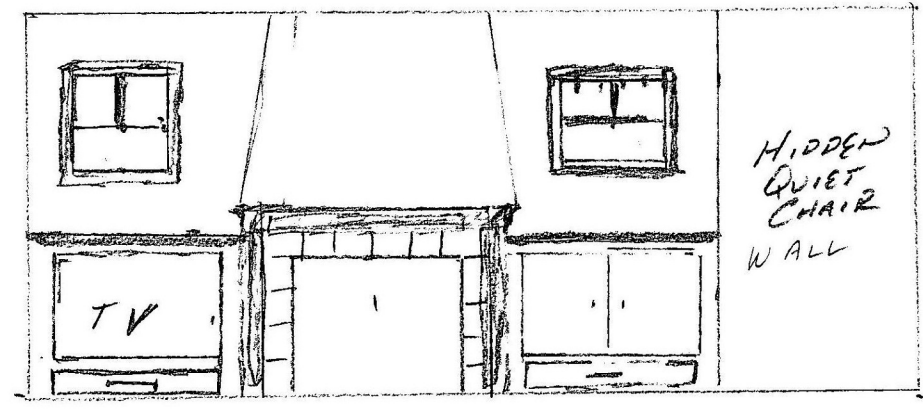
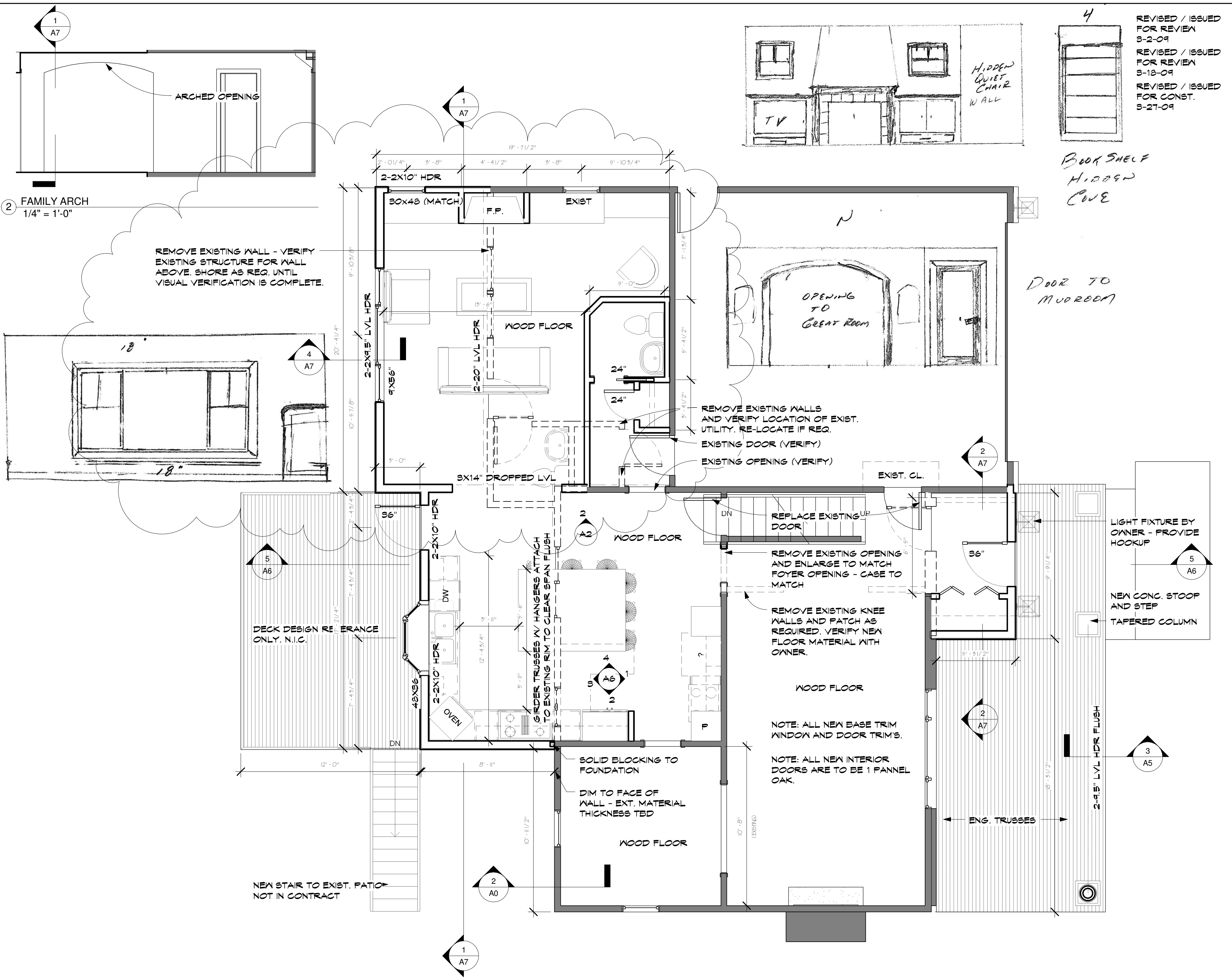
6912 RIDGVIEW DRIVE
 EDINA, MINNESOTA

JOB NO: 6912

SHEET NO:

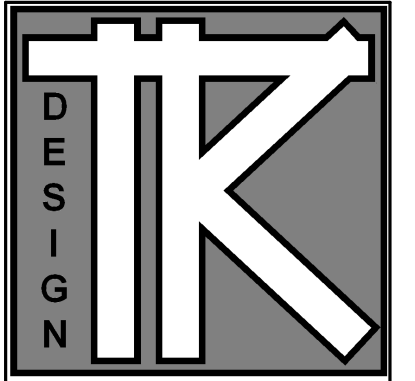
A1

LOWER FLOOR



REVISÉD / ISSUED FOR REVIEW 3-2-09
 REVISÉD / ISSUED FOR REVIEW 3-13-09
 REVISÉD / ISSUED FOR CONST. 3-27-09

DATE: 7-1-08
 REVISIONS:
 ISSUED FOR REVIEW & BID 7-13-08
 ISSUED FOR REVIEW & BID 7-22-08
 ISSUED FOR FINAL REVIEW 9-3-08
 ISSUED FOR FINAL REVIEW 9-10-08
 ISSUED 10-1-08



TODD KNOTSON DESIGN
 2388 UNIVERSITY AV. N.
 STUDIO 100
 SAINT PAUL, MN. 55114
 PHONE: 651-472-0054
 FAX: 651-472-0060
 MOBIL: 612-251-1041

RUTZEN REMODELING
 6912 RIDGVIEW DRIVE
 EDINA, MINNESOTA

JOB NO: 6912

SHEET NO:
A2
 MAIN FLOOR

3/27/2009 11:32:57 AM

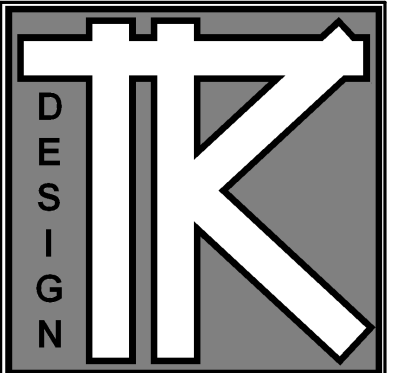
① MAIN FLOOR
 1/4" = 1'-0"

REVISED / ISSUED
FOR REVIEW
3-2-09
REVISED / ISSUED
FOR REVIEW &
3-13-09
REVISED / ISSUED
FOR CONST.
3-27-09

DATE: 7-1-08

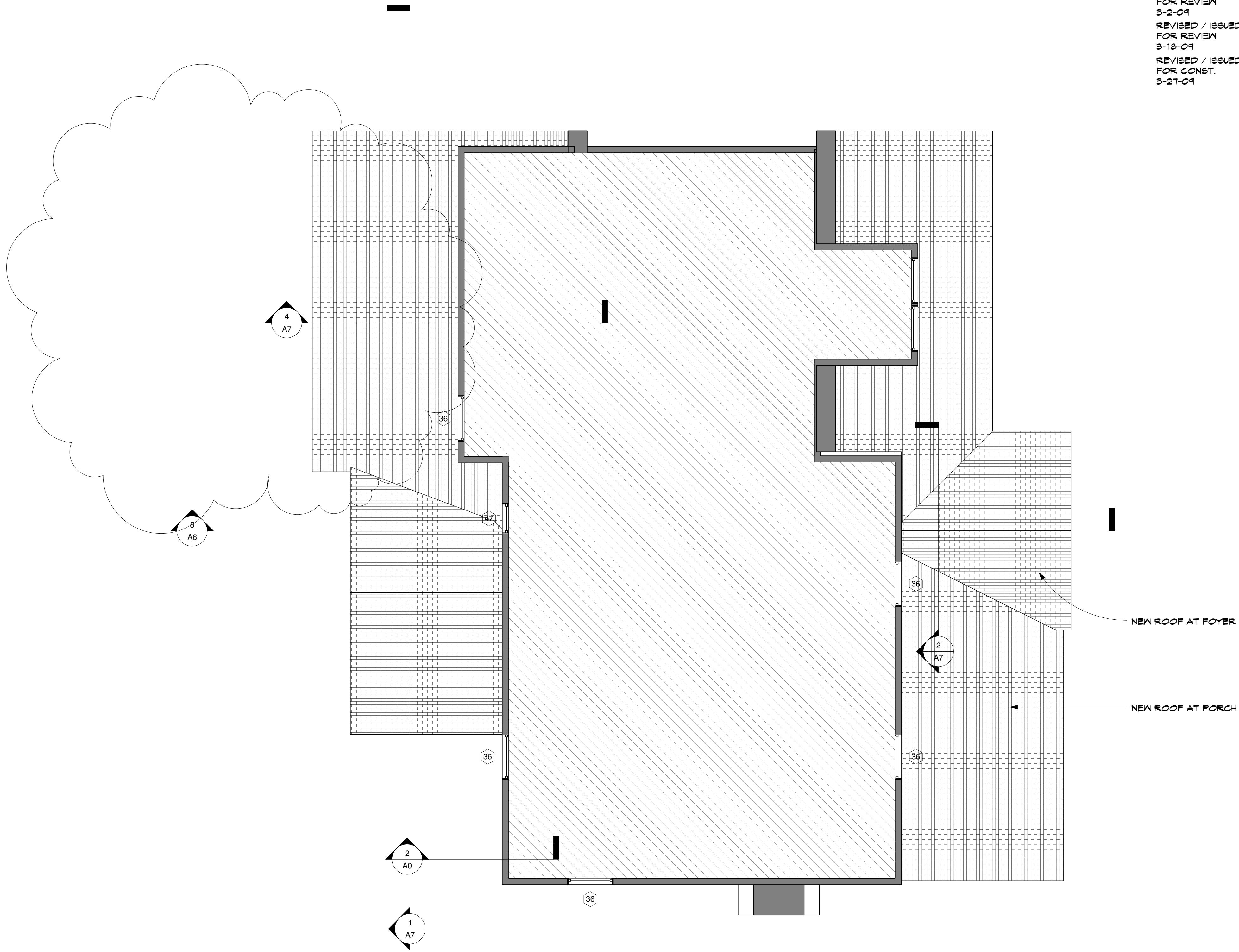
REVISIONS:

ISSUED FOR REVIEW &
BID 7-13-08
ISSUED FOR REVIEW &
BID 7-22-08
ISSUED FOR FINAL
REVIEW 9-3-08
ISSUED FOR FINAL
REVIEW 9-10-08
ISSUED 10-1-08



TODD KNUTSON DESIGN

2388 UNIVERSITY AV. N.
STUDIO 100
SAINT PAUL, MN. 55114
PHONE: 651-472-0054
FAX: 651-472-0060
MOBIL: 612-251-1041



RUTZEN REMODELING

6912 RIDGVIEW DRIVE
EDINA, MINNESOTA

JOB NO: 6912

SHEET NO:

A3

UPPER FLOOR

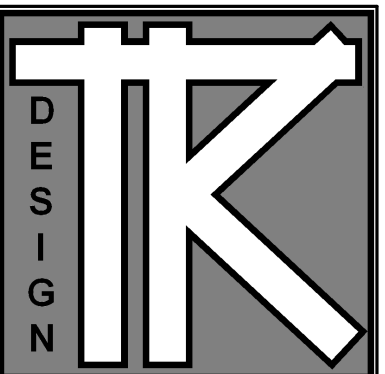
1 UPPER FLOOR
1/4" = 1'-0"

REVISED / ISSUED FOR REVIEW
3-2-09
REVISED / ISSUED FOR REVIEW
3-13-09
REVISED / ISSUED FOR CONST.
3-27-09

DATE: 7-1-08

REVISIONS:

ISSUED FOR REVIEW & BID 7-13-08
ISSUED FOR REVIEW & BID 7-22-08
ISSUED FOR FINAL REVIEW 9-3-08
ISSUED FOR FINAL REVIEW 9-10-08
ISSUED 10-1-08



TODD KNOTSON DESIGN
2388 UNIVERSITY AV. N.
STUDIO 100
SAINT PAUL, MN. 55114
PHONE: 651-472-0054
FAX: 651-472-0060
MOBIL: 612-251-1041

RUTZEN REMODELING

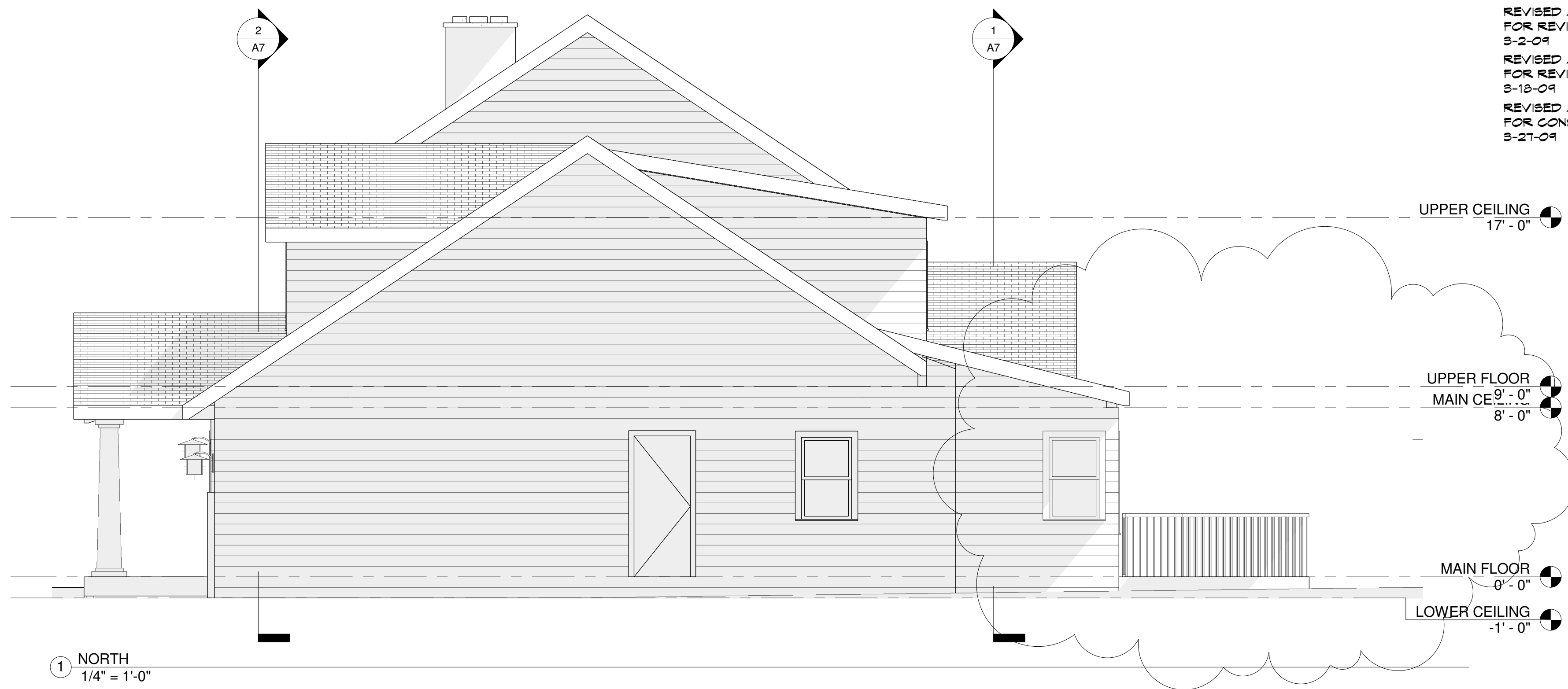
6912 RIDGVIEW DRIVE
EDINA, MINNESOTA

JOB NO: 6912

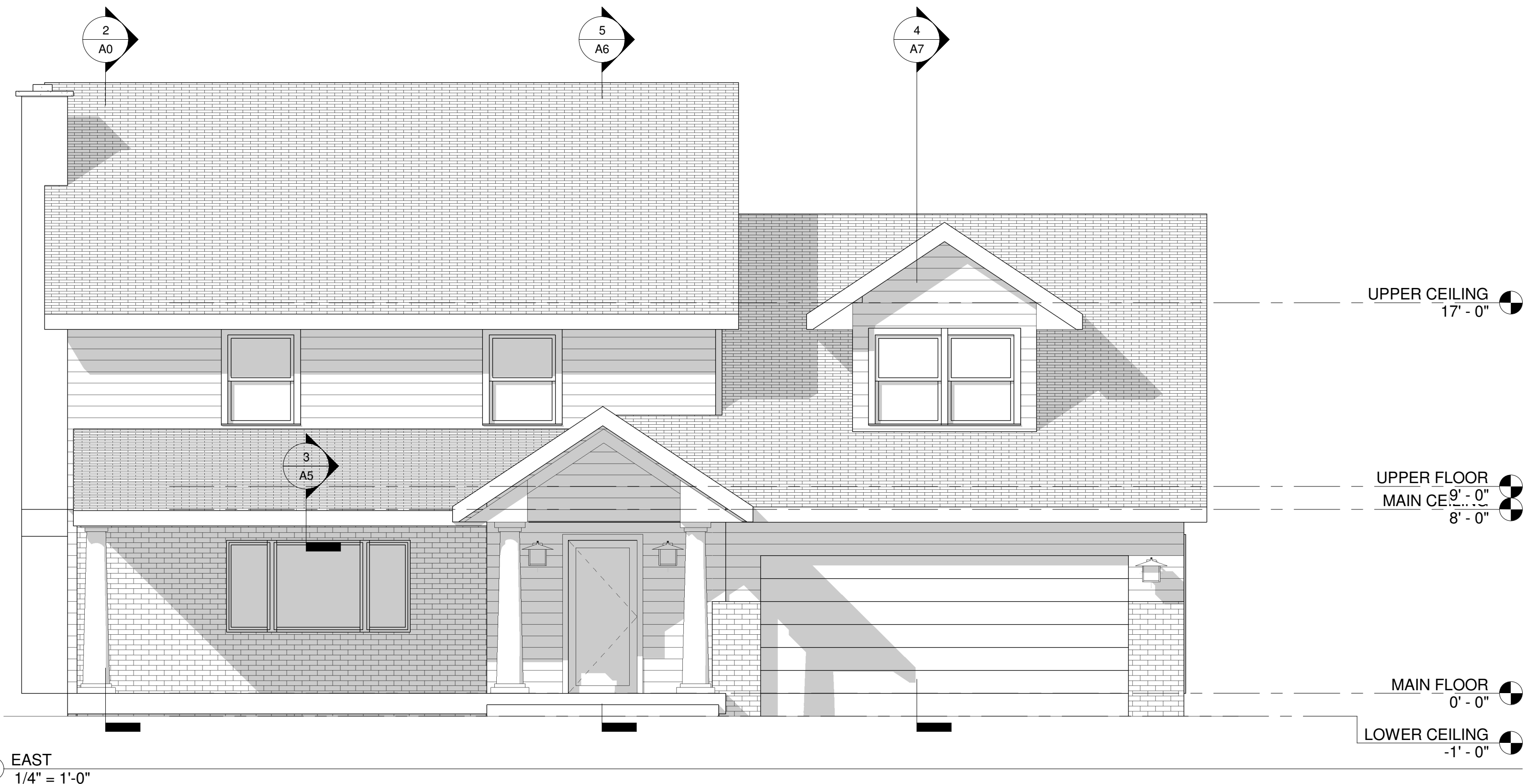
SHEET NO:

A4

ELEVATIONS



1 NORTH
1/4" = 1'-0"



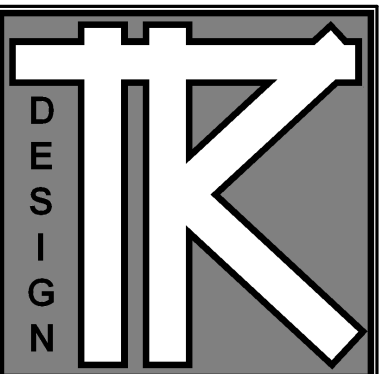
2 EAST
1/4" = 1'-0"

REVISED / ISSUED FOR REVIEW 3-2-09
 REVISED / ISSUED FOR REVIEW 3-13-09
 REVISED / ISSUED FOR CONST. 3-27-09

DATE: 7-1-08

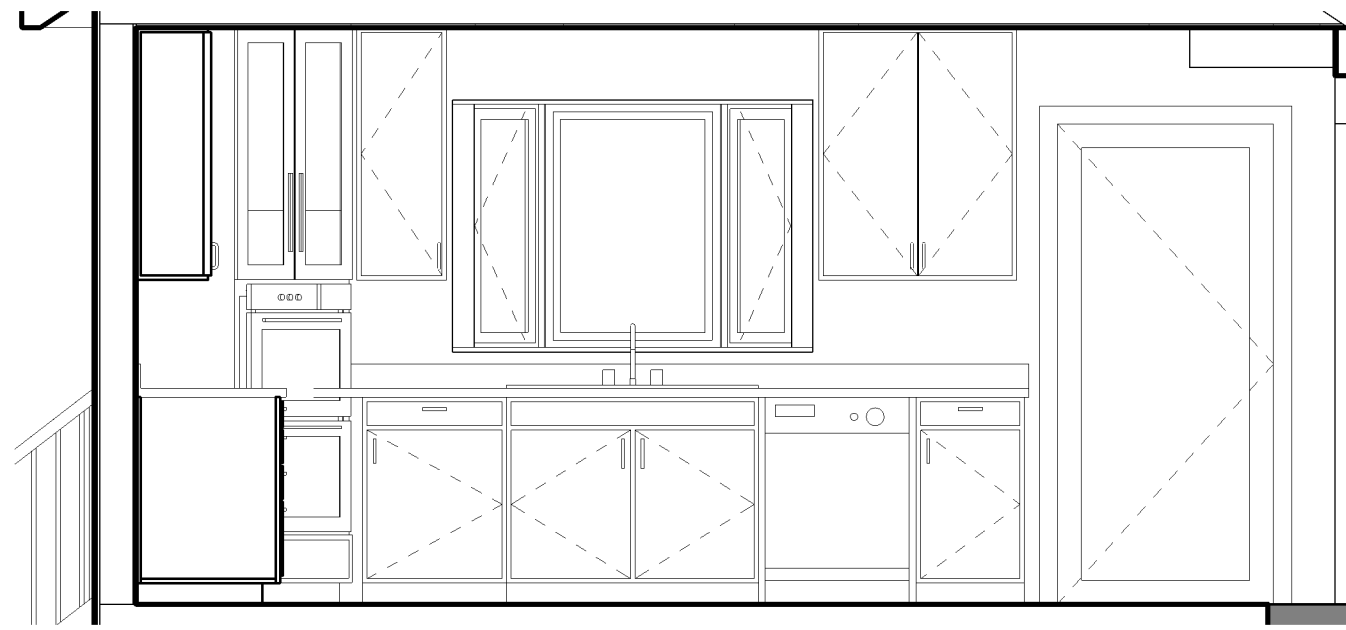
REVISIONS:

ISSUED FOR REVIEW & BID 7-13-08
 ISSUED FOR REVIEW & BID 7-22-08
 ISSUED FOR FINAL REVIEW 9-3-08
 ISSUED FOR FINAL REVIEW 9-10-08
 ISSUED 10-1-08

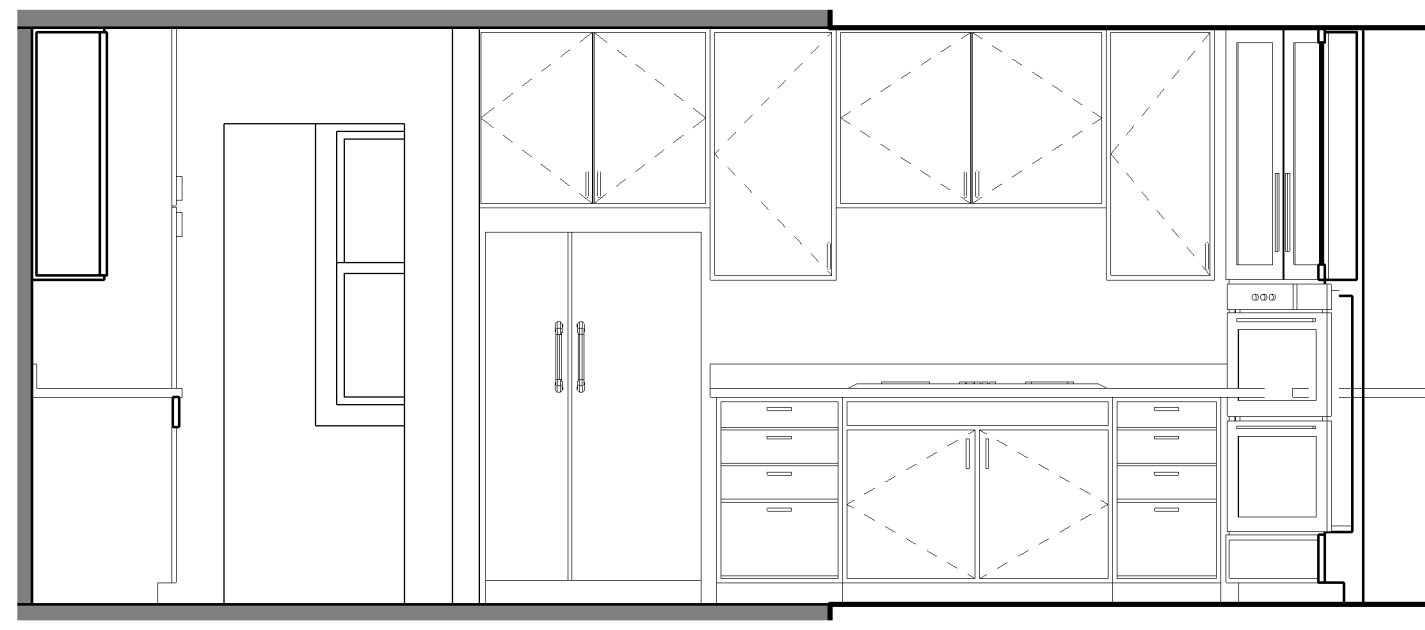


TODD KNOTSON DESIGN

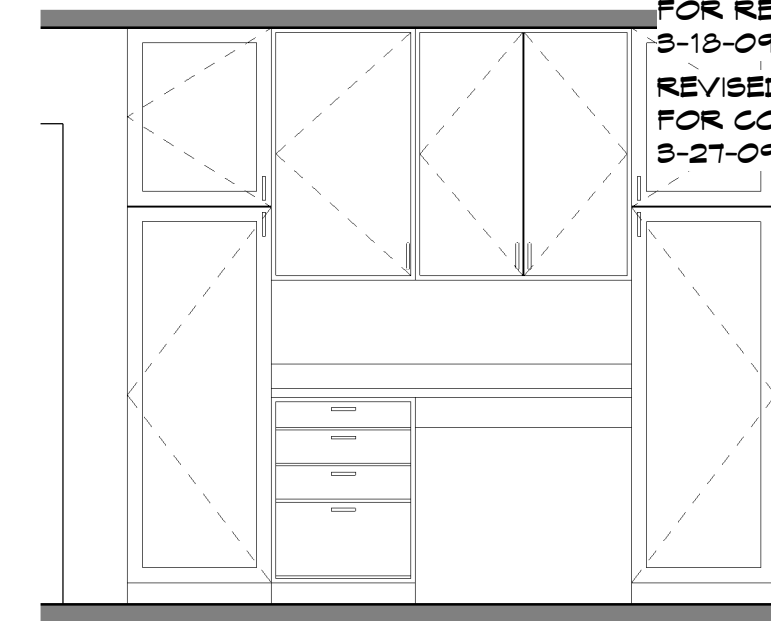
2388 UNIVERSITY AV. W.
 STUDIO 100
 SAINT PAUL, MN. 55114
 PHONE: 651-472-0054
 FAX: 651-472-0060
 MOBIL: 612-251-1041



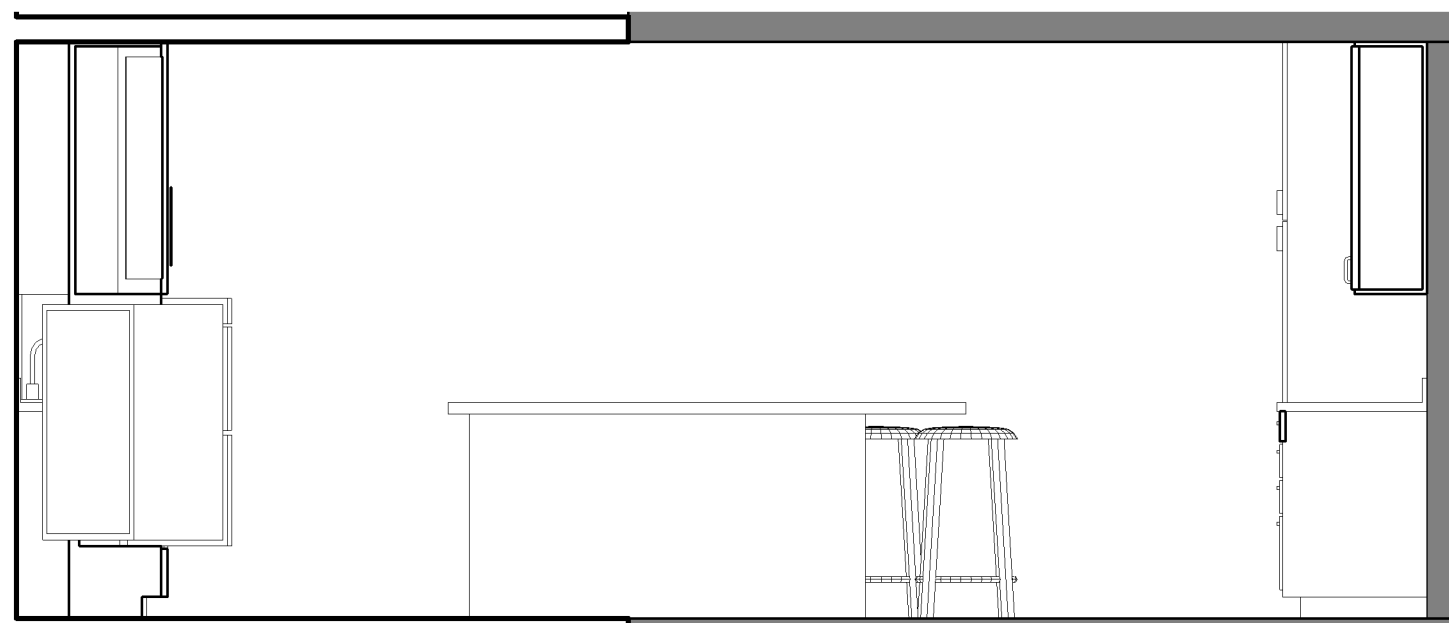
3 KITCHEN WEST
 3/8" = 1'-0"



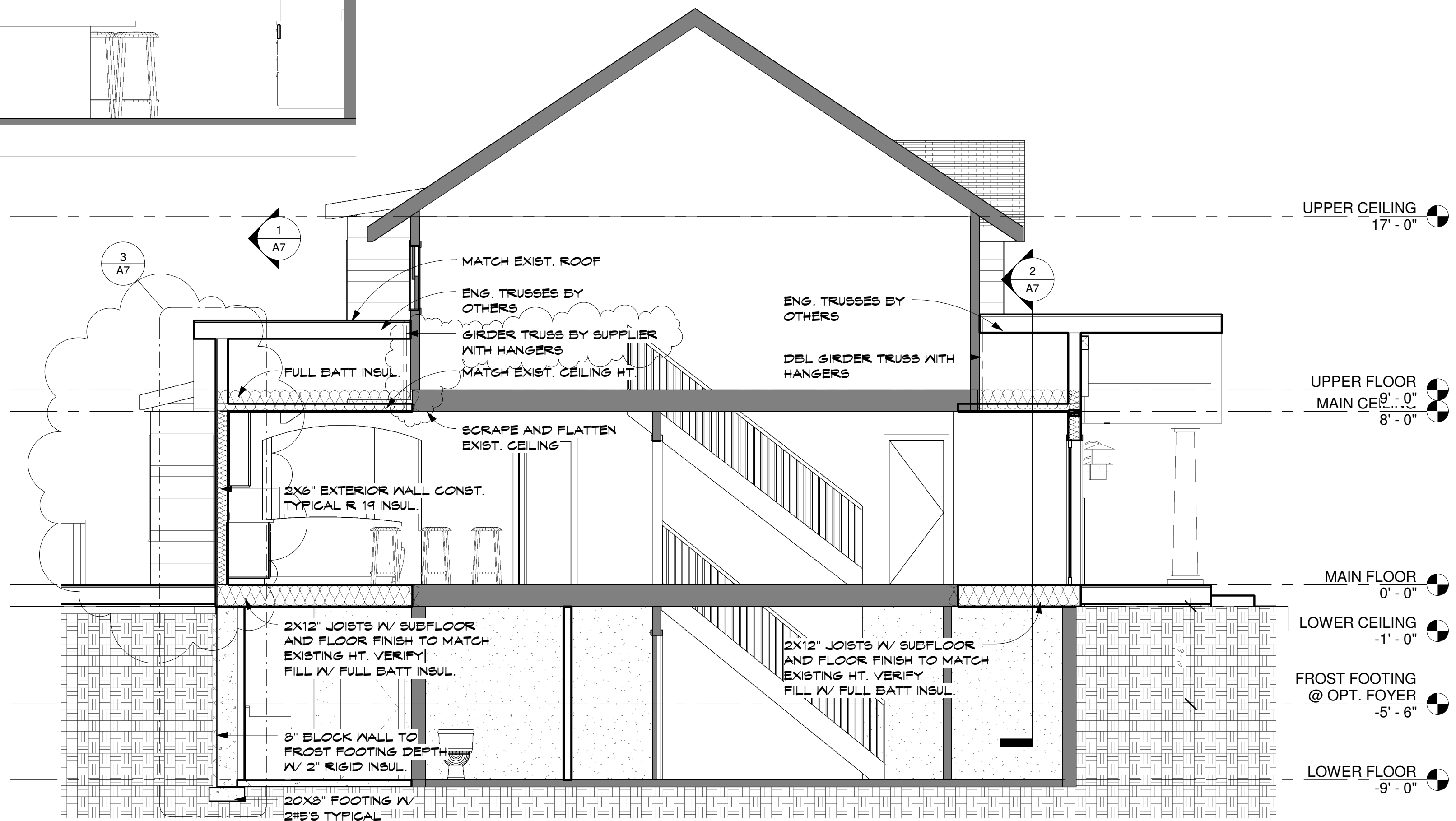
2 KITCHEN SOUTH
 3/8" = 1'-0"



1 KITCHEN EAST
 3/8" = 1'-0"



4 KITCHEN ISLAND
 3/8" = 1'-0"



5 Section 1
 1/4" = 1'-0"

RUTZEN REMODELING

6912 RIDGVIEW DRIVE
 EDINA, MINNESOTA

JOB NO: 6912

SHEET NO:

A6

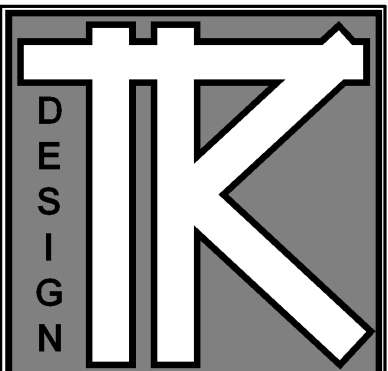
SECTIONS

REVISED / ISSUED FOR REVIEW
3-2-09
REVISED / ISSUED FOR REVIEW
3-13-09
REVISED / ISSUED FOR CONST.
3-27-09

DATE: 7-1-08

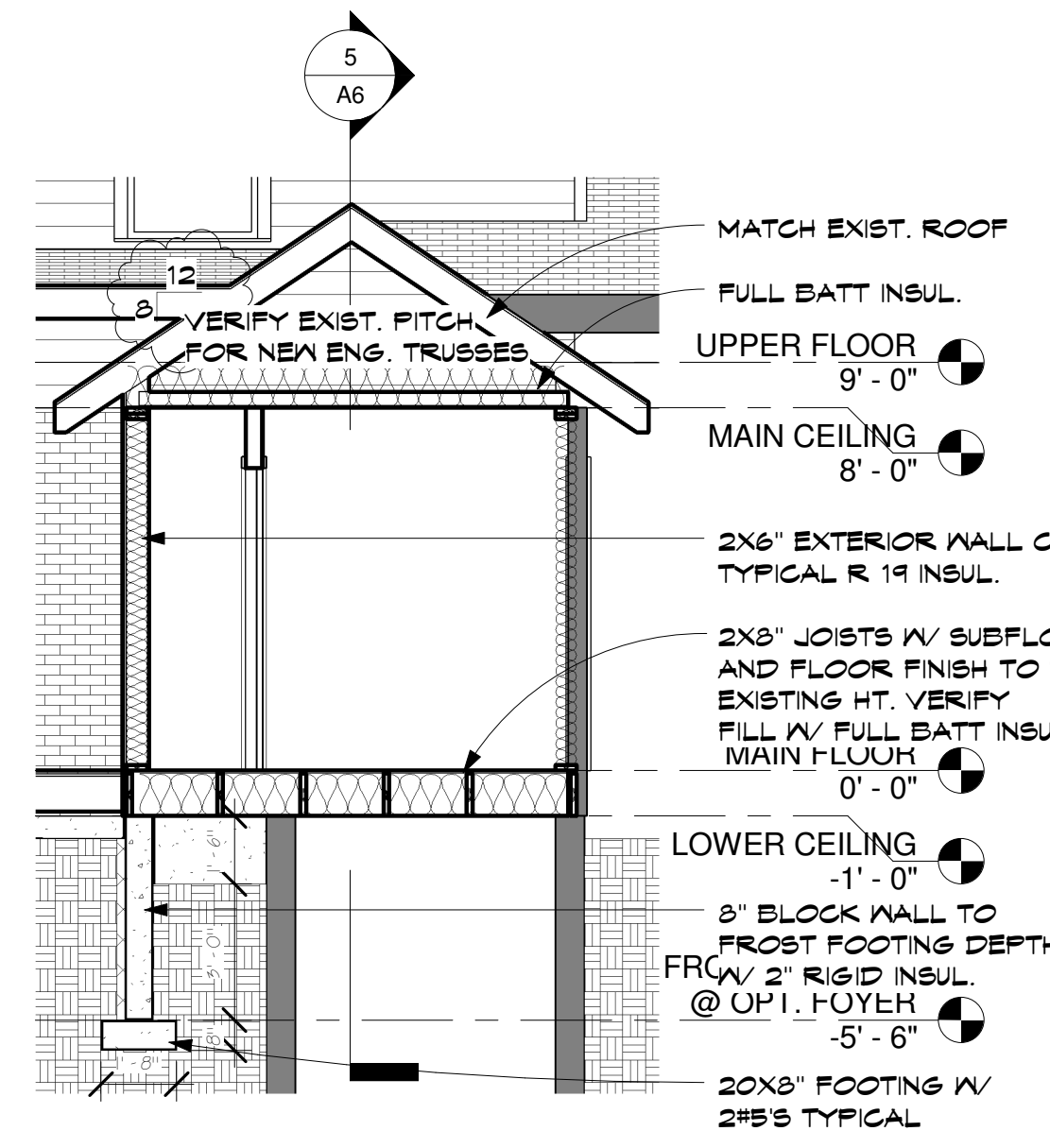
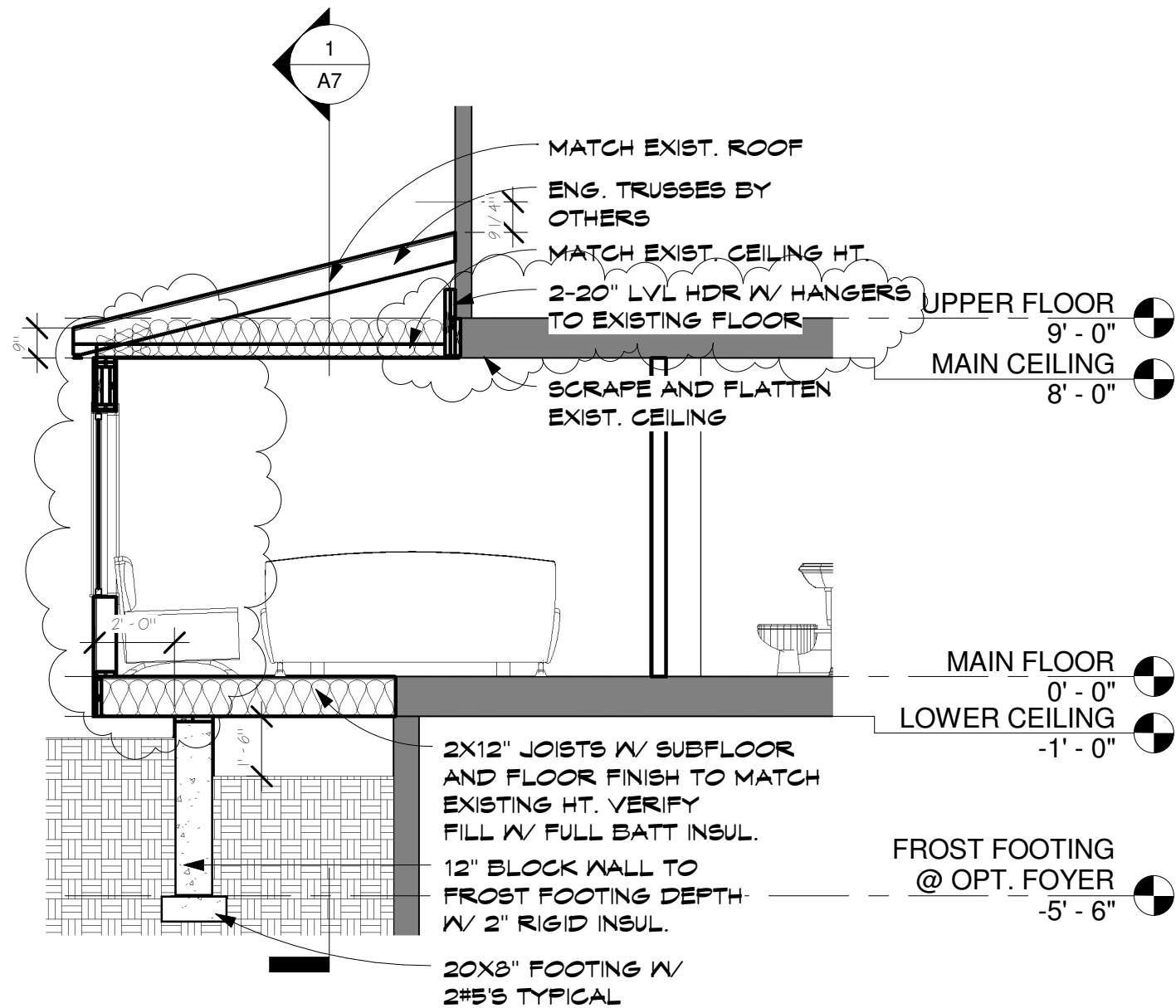
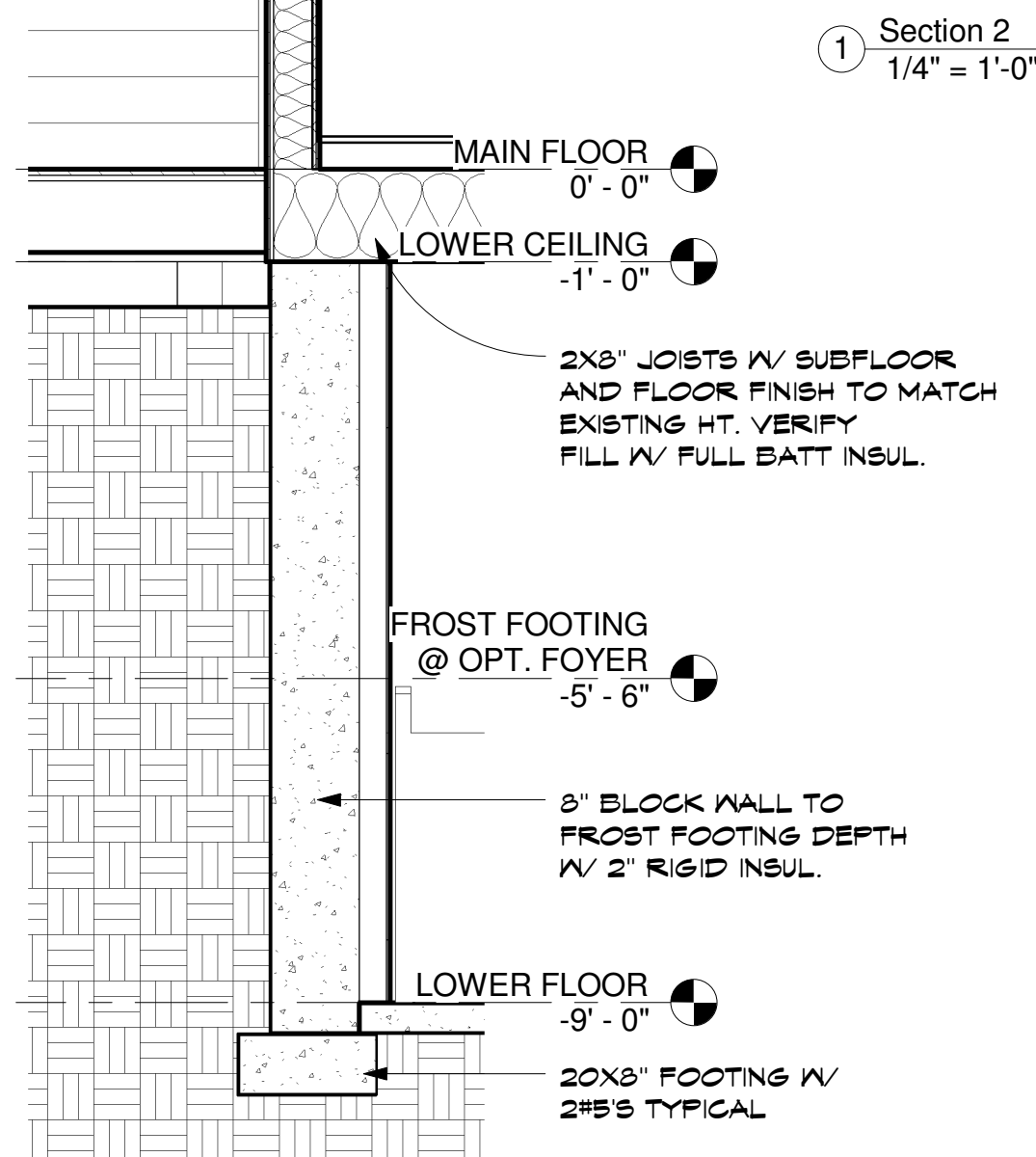
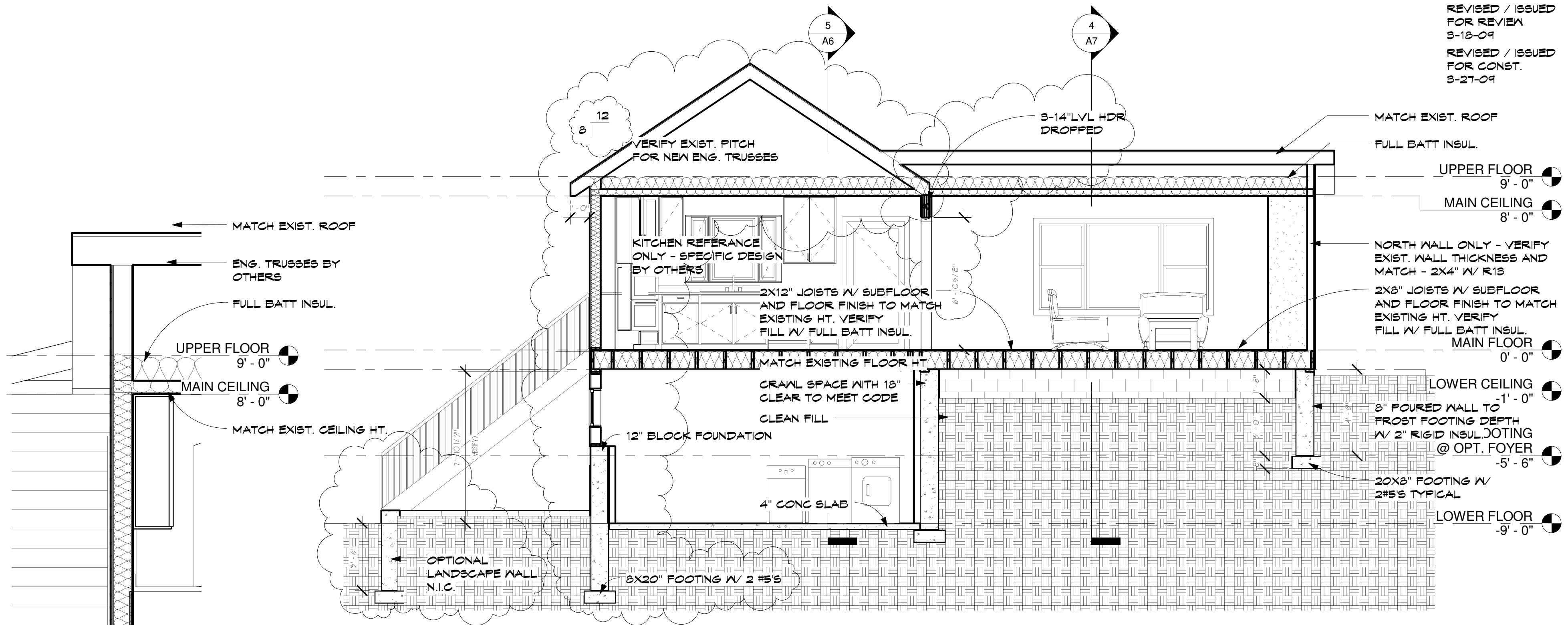
REVISIONS:

ISSUED FOR REVIEW & BID 7-13-08
ISSUED FOR REVIEW & BID 7-22-08
ISSUED FOR FINAL REVIEW 9-3-08
ISSUED FOR FINAL REVIEW 9-10-08
ISSUED 10-1-08



TODD KNUTSON DESIGN

2383 UNIVERSITY AV. W.
STUDIO 100
SAINT PAUL, MN. 55114
PHONE: 651-472-0054
FAX: 651-472-0060
MOBIL: 612-251-1041



RUTZEN REMODELING

6912 RIDGVIEW DRIVE
EDINA, MINNESOTA

JOB NO: 6912

SHEET NO:

A7

SECTIONS