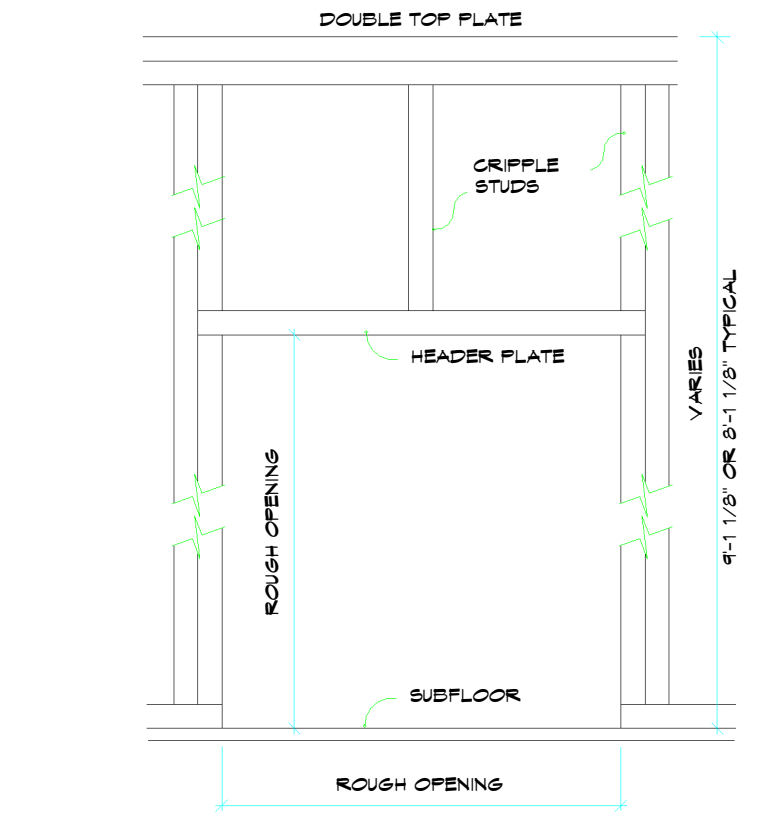
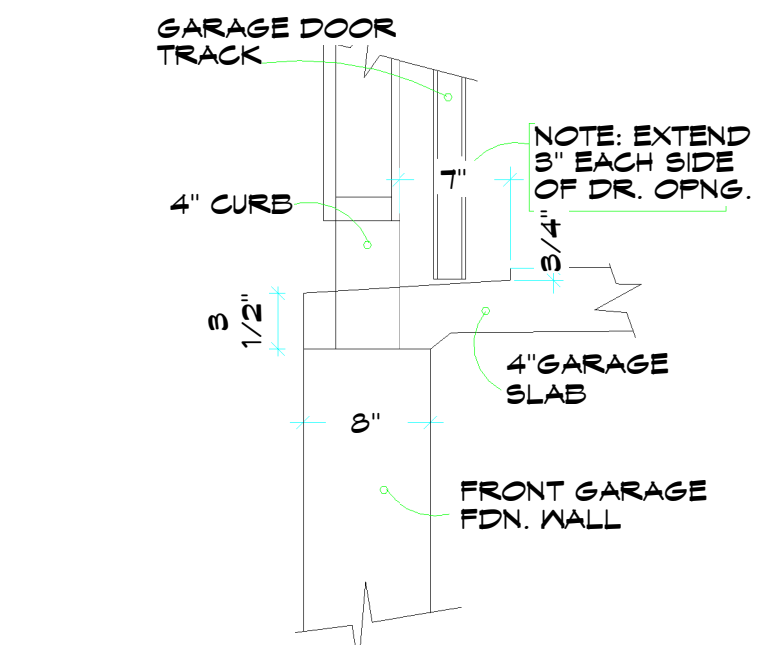


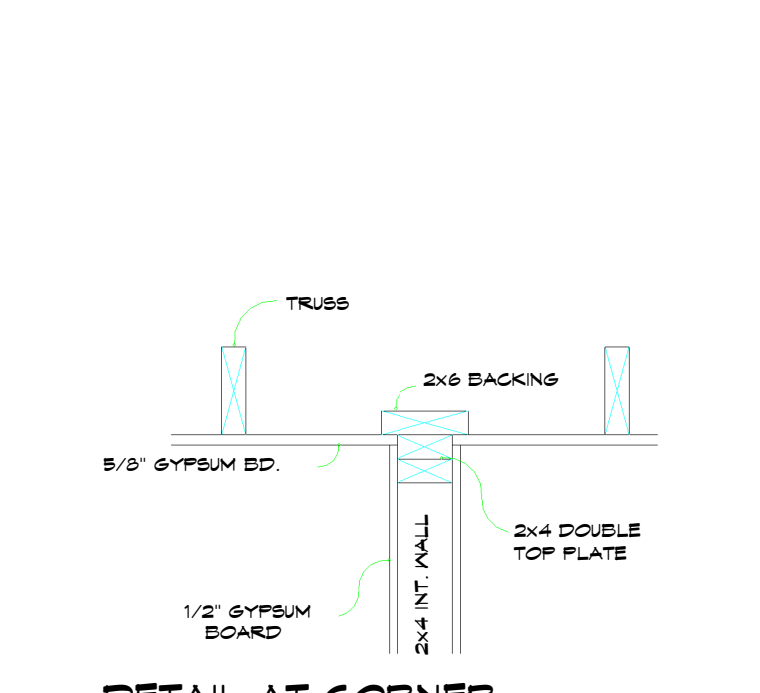
1 MAIN FLOOR
 1/4" = 1'-0"



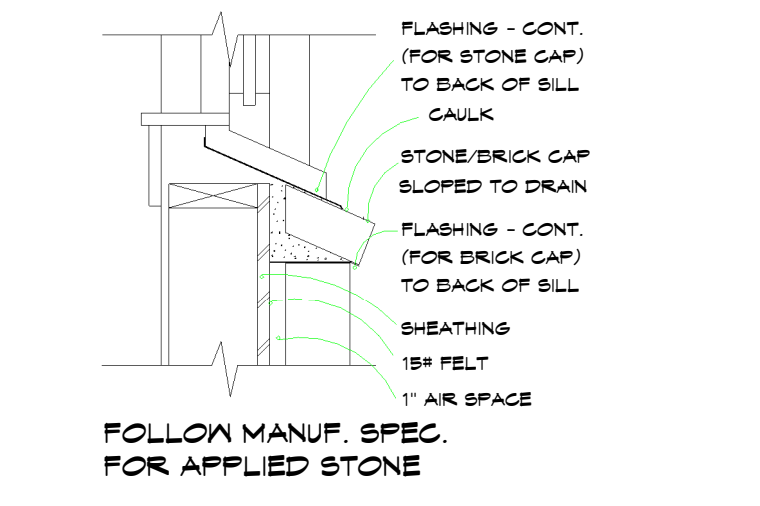
3 DOOR FRAMING DETAIL
 1/2" = 1'-0"



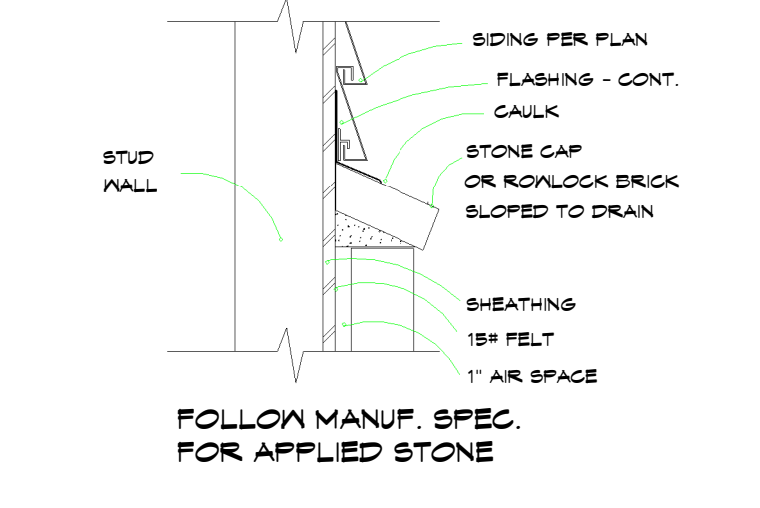
4 DETAIL AT GARAGE DOOR
 1/2" = 1'-0"



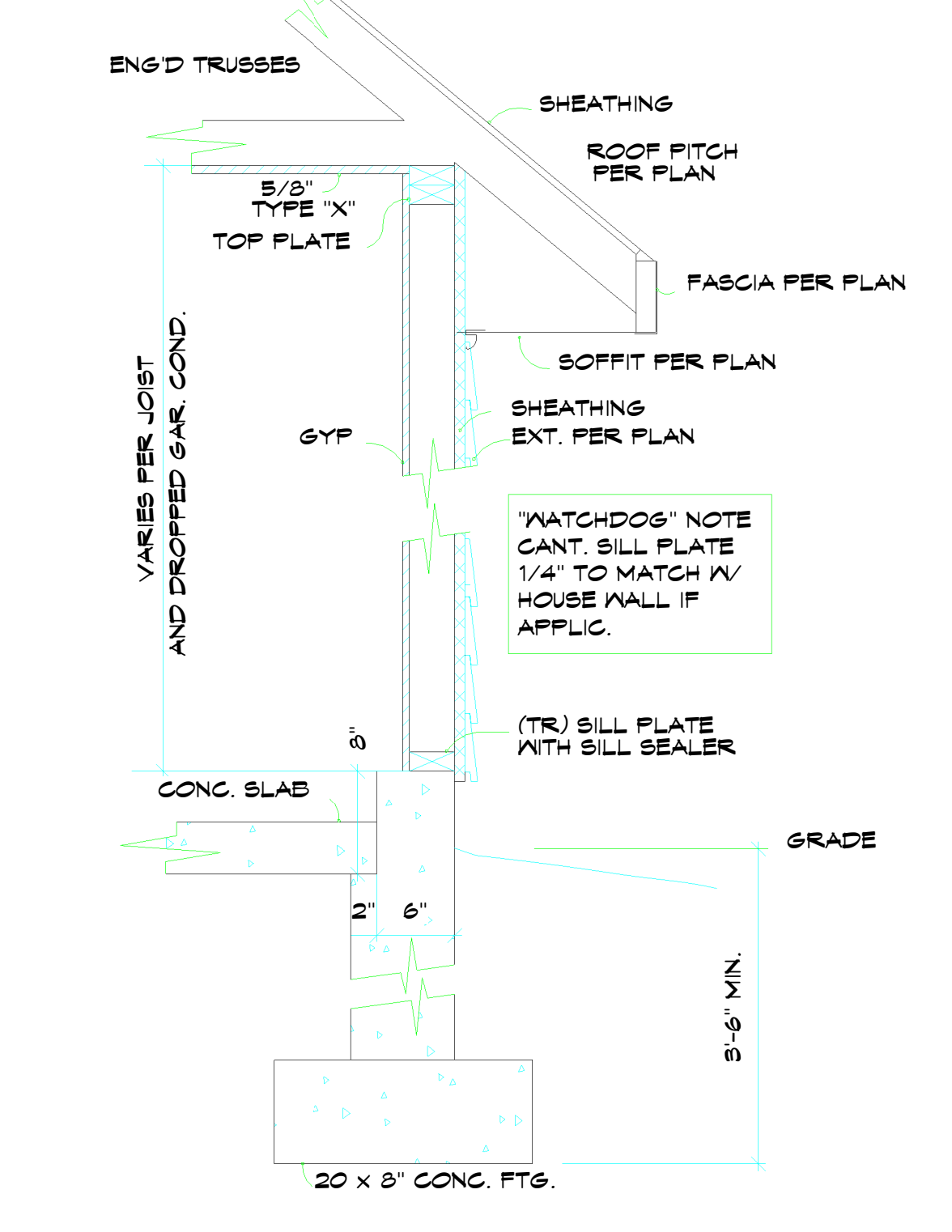
6 DETAIL AT CORNER NAILER
 1/2" = 1'-0"



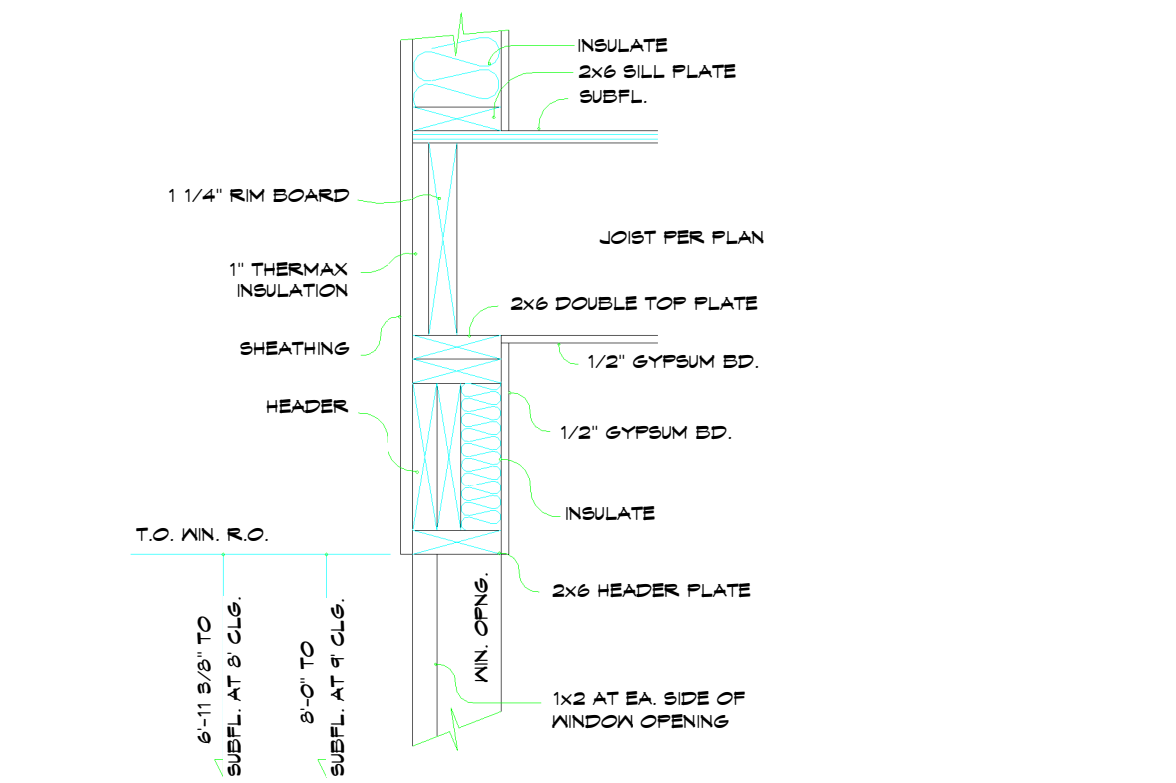
8 DETAIL AT STONE SILL
 1/2" = 1'-0"



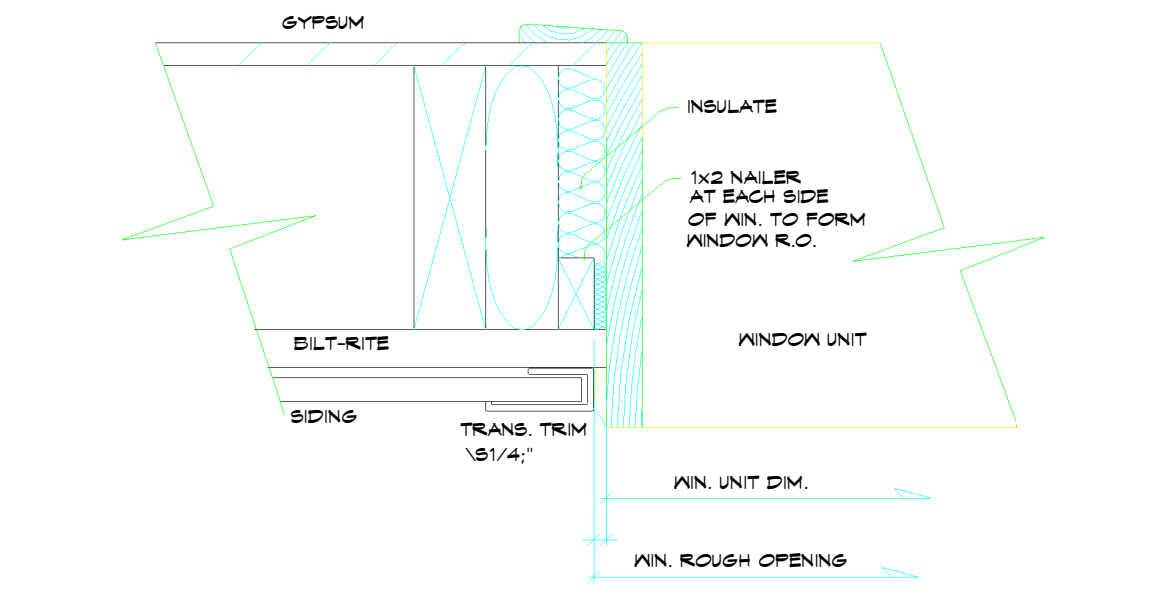
9 DETAIL AT STONE CAP
 1/2" = 1'-0"



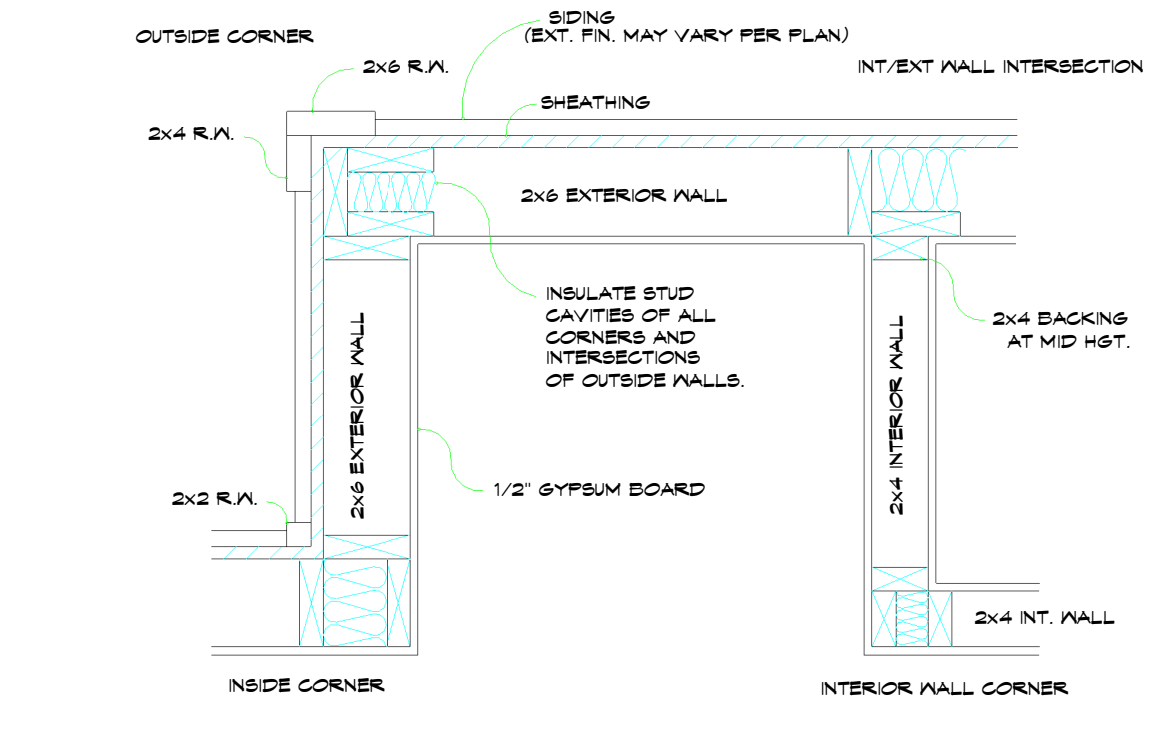
2 DETAIL AT GARAGE WALL
 1/2" = 1'-0"



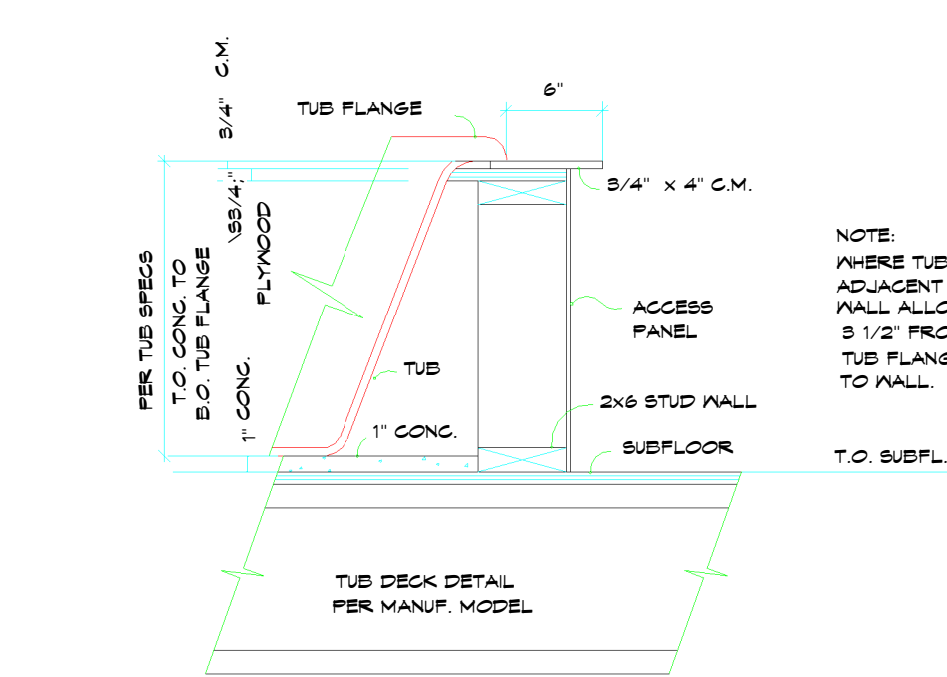
5 DETAIL AT TYPICAL HEADER
 1/2" = 1'-0"



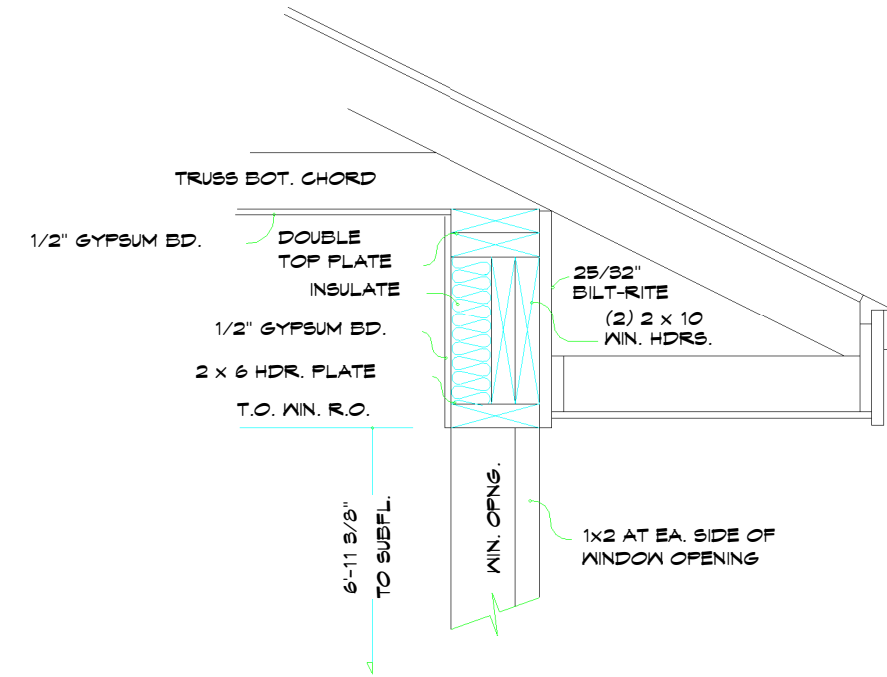
7 DETAIL AT WINDOW NAILER
 1/2" = 1'-0"



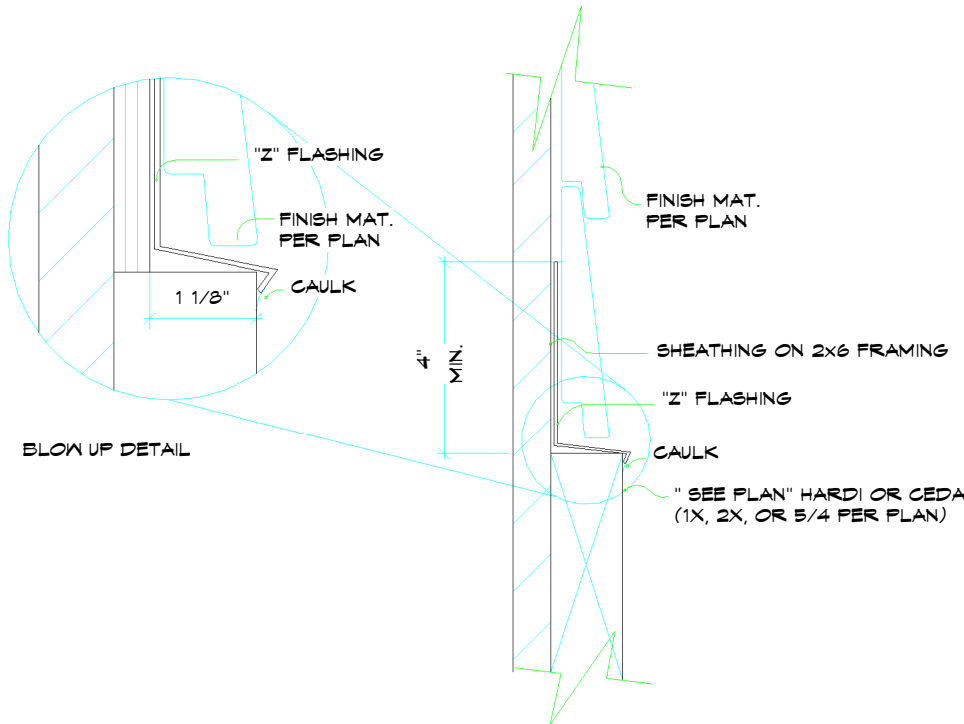
10 TYPICAL FRAMING DETAIL
 1" = 1'-0"



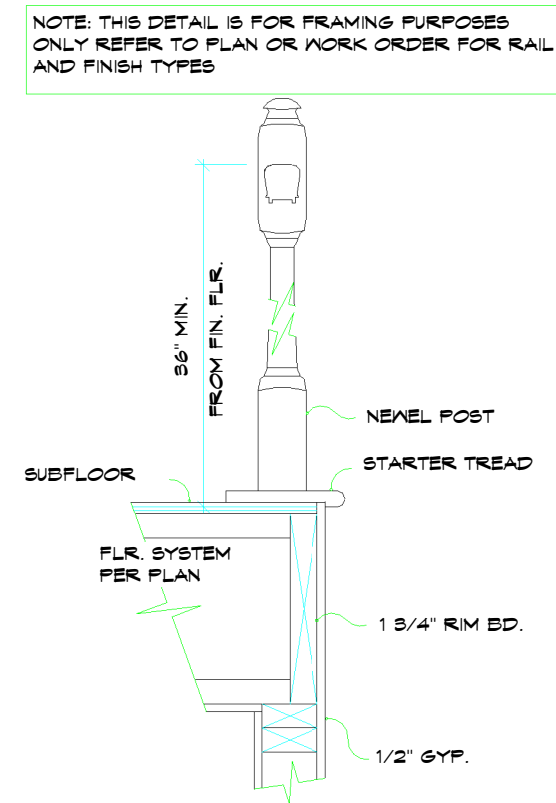
2 DETAIL AT TUB DECK
 AS 1" = 1'-0"



3 DETAIL AT EAVE HEADER
 AS 1" = 1'-0"

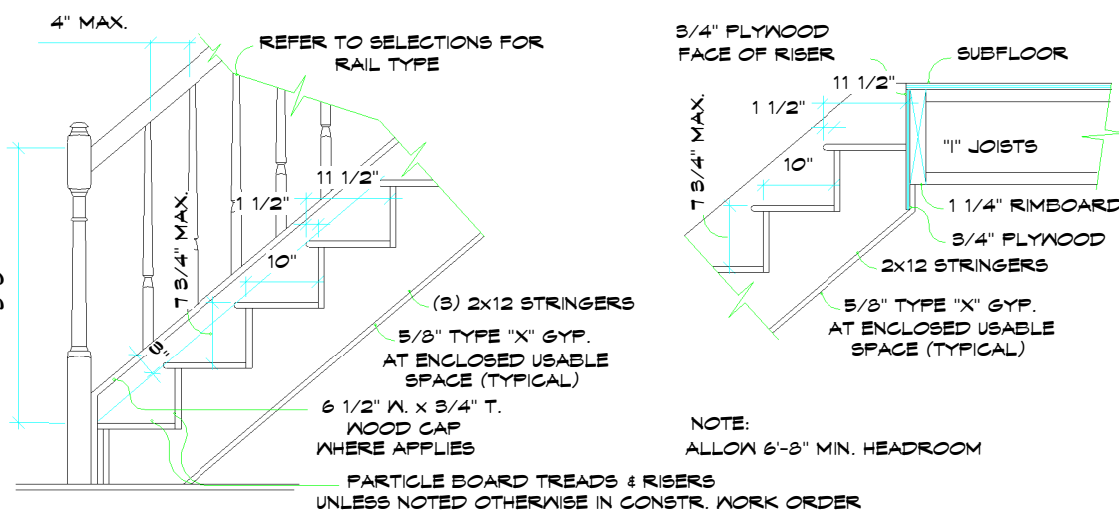


4 FLASHING DETAIL
 AS 3" = 1'-0"



5 DETAIL AT RAILING
 AS 1" = 1'-0"

NOTE: THIS DETAIL IS FOR FRAMING PURPOSES ONLY REFER TO PLAN OR WORK ORDER FOR RAIL AND FINISH TYPE(S)



6 STAIR FRAMING DETAIL
 AS 1/2" = 1'-0"



7 WINDOW FRAMING DETAIL
 AS 1" = 1'-0"



1 UPPER FLOOR
 AS 1/4" = 1'-0"



1 North
A4 1/4" = 1'-0"



2 West
A4 1/4" = 1'-0"

DATE: 7-19-07
 REVISIONS:
 ISSUED FOR REVIEW
 7-26-07
 PRINTED 7-31-07
 ISSUED FOR REVIEW
 8-15-07
 ISSUED 8-22-07

BRUCE
Architect
KNUTSON
 530 NORTH 3RD ST. SUITE 530
 MINNEAPOLIS, MN. 55401
 PHONE 612-332-8000 FAX 612-332-7504
 WWW.KNUTSON-ARCHITECTS.COM

DATE: I HEREBY CERTIFY THAT THIS
 PLAN AND SPECIFICATIONS
 WERE PREPARED BY ME
 OR UNDER MY DIRECT SUPERVISION
 AND THAT I AM A REGISTERED ARCHITECT
 IN THE STATE OF MINNESOTA.
 REGISTRATION NO. 11789

TWIN PONDS ESTATES #1
 Enter address here

JOB NO: 2007-1

SHEET NO:
A4
 ELEVATIONS



1 South
A5 1/4" = 1'-0"



2 East
A5 1/4" = 1'-0"

DATE: 7-19-07

REVISIONS:

- ISSUED FOR REVIEW
7-26-07
- PRINTED 7-31-07
- ISSUED FOR REVIEW
8-15-07
- ISSUED 8-22-07

**BRUCE
Knutson**
530 NORTH 3RD ST. SUITE 530
MINNEAPOLIS, MN. 55401
PHONE 612-332-8000 FAX 612-332-7504
WWW.KNUTSON-ARCHITECTS.COM

I HEREBY CERTIFY THAT THIS
DRAWING WAS PREPARED BY ME
OR UNDER MY DIRECT SUPER-
VISION AND THAT I AM A
REGISTERED ARCHITECT IN THE
STATE OF MINNESOTA.
REGISTRATION NO. 11789

TWIN PONDS ESTATES #1

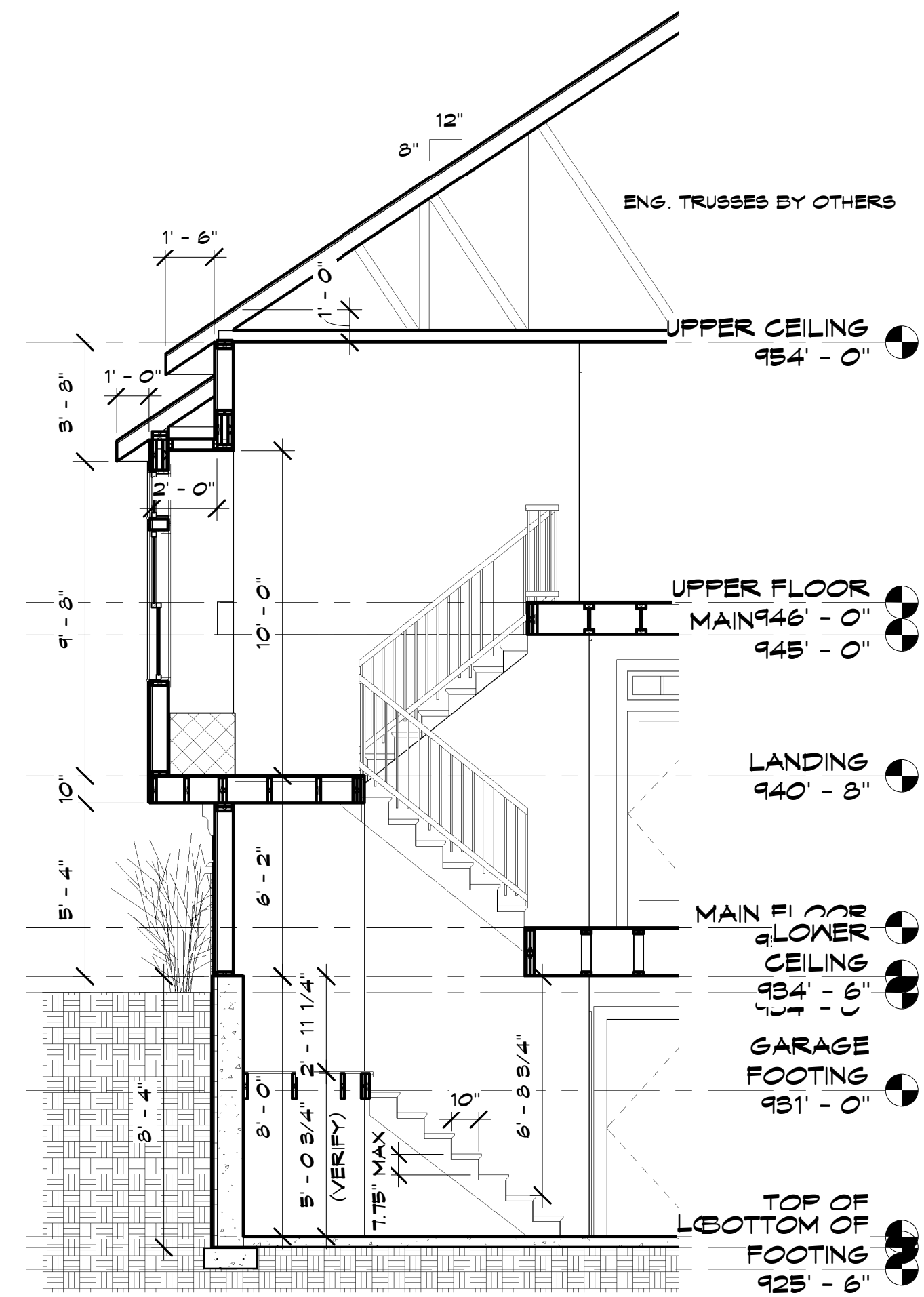
Enter address here

JOB NO: 2007-1

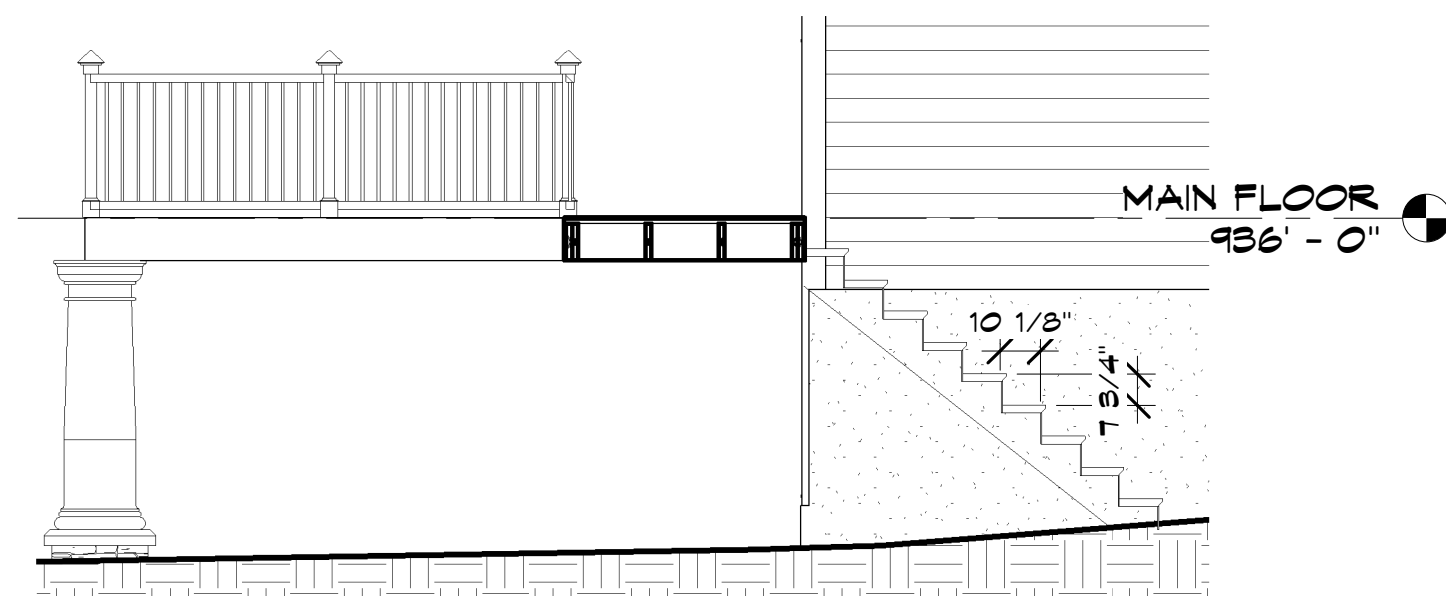
SHEET NO:

A5

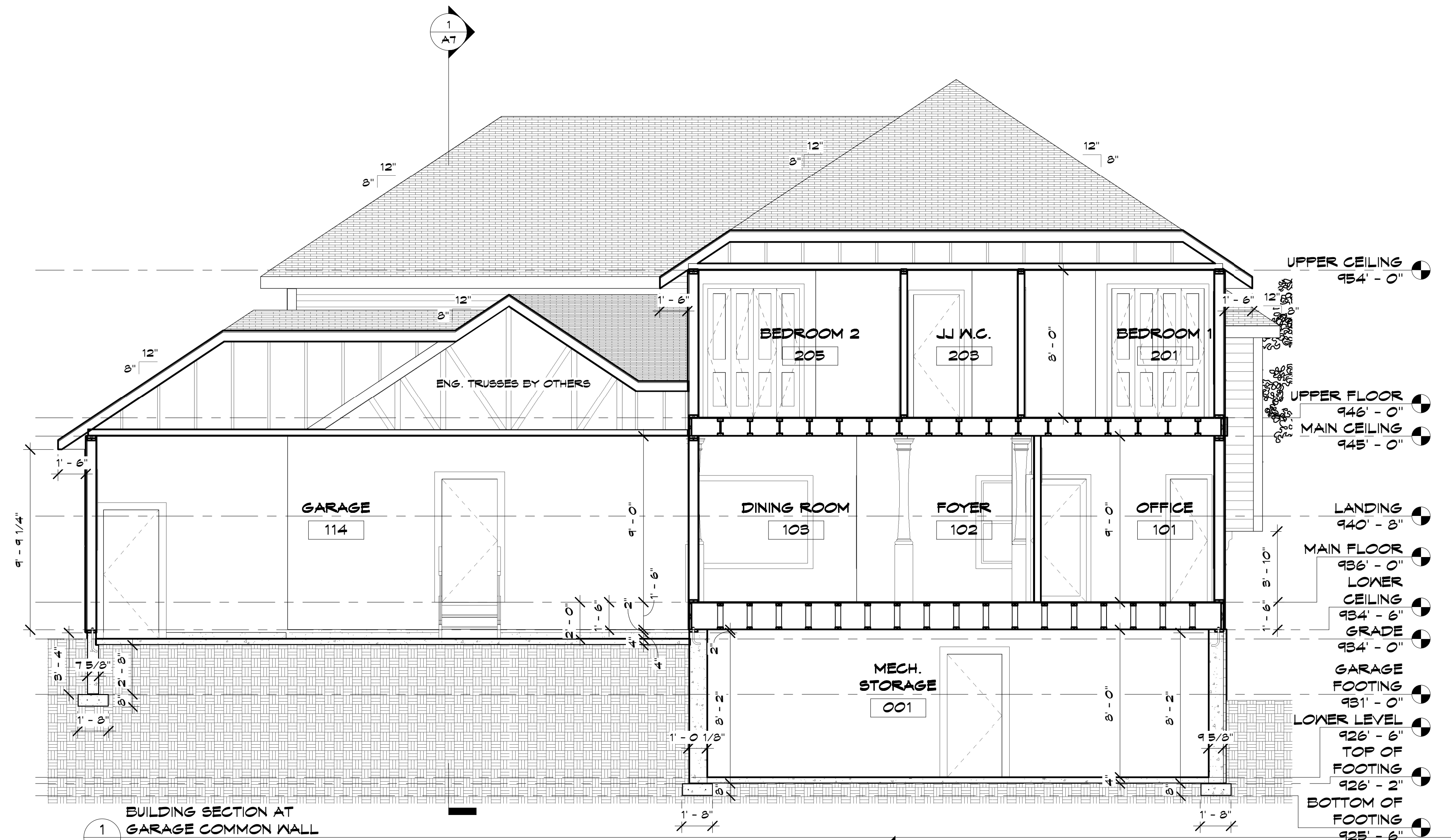
ELEVATIONS



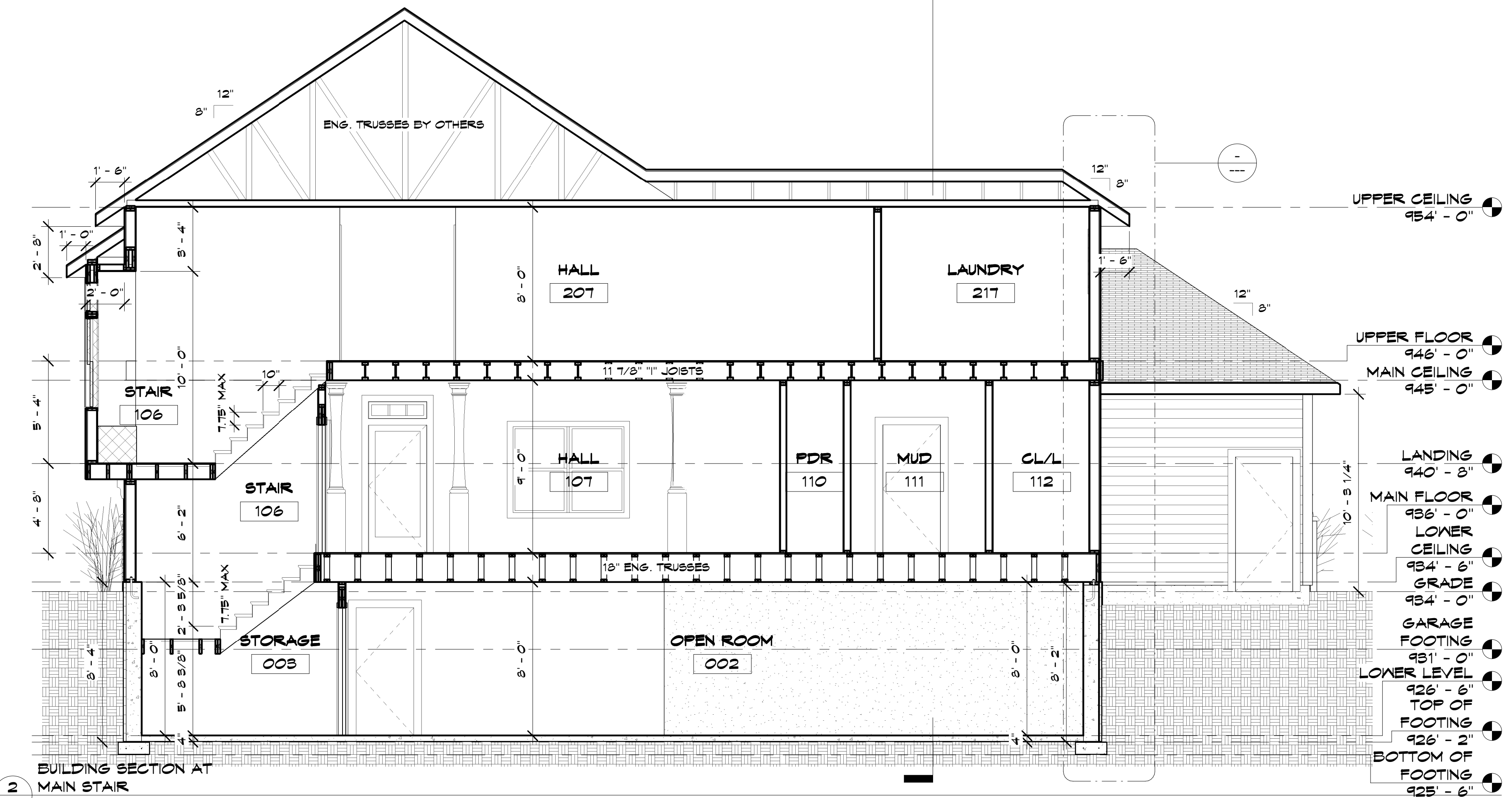
3 STAIR SECTION
A6 1/4" = 1'-0"



4 STAIR SECTION AT DECK
A6 1/4" = 1'-0"



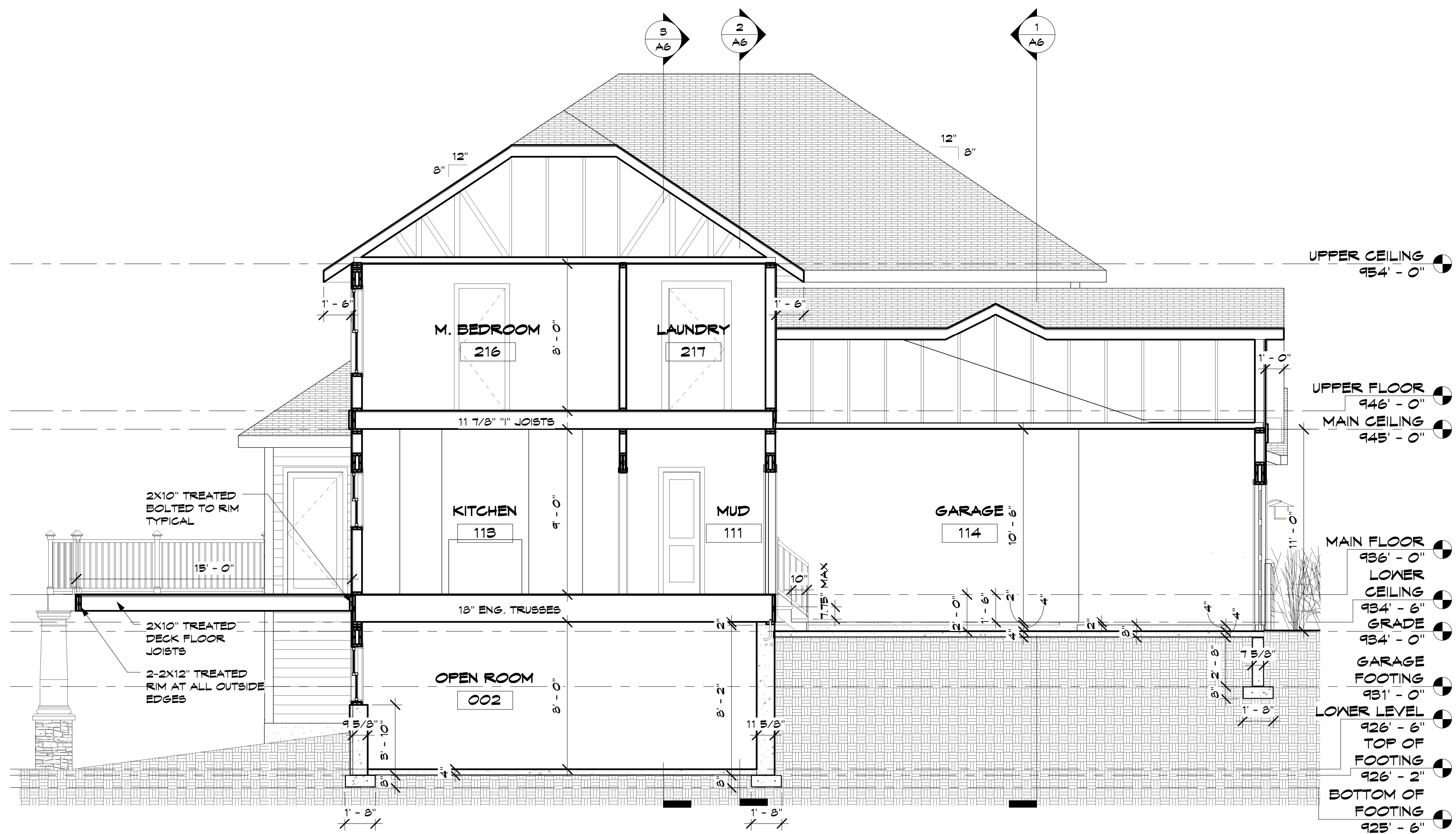
1 BUILDING SECTION AT GARAGE COMMON WALL
A6 1/4" = 1'-0"



2 BUILDING SECTION AT MAIN STAIR
A6 1/4" = 1'-0"

Window Schedule				
Type Mark	Level	Width	Height	Comments
O1	LOWER LEVEL	6' - 0"	3' - 0"	
O2	LOWER LEVEL	6' - 0"	4' - 0"	
O1	LOWER LEVEL	6' - 0"	3' - 0"	
O3	MAIN FLOOR	9' - 0"	4' - 8"	
O3	MAIN FLOOR	9' - 0"	4' - 8"	
O4	MAIN FLOOR	6' - 0"	4' - 8"	
O4	MAIN FLOOR	6' - 0"	4' - 8"	
O4	MAIN FLOOR	6' - 0"	4' - 8"	
O5	MAIN FLOOR	4' - 0"	4' - 0"	
O6	MAIN FLOOR	3' - 0"	4' - 8"	
O12	MAIN FLOOR	4' - 0"	3' - 0"	
O3	MAIN FLOOR	3' - 0"	1' - 6"	
O3	MAIN FLOOR	3' - 0"	1' - 6"	
O9	LANDING	5' - 0"	4' - 8"	
O4	UPPER FLOOR	6' - 0"	4' - 8"	
O4	UPPER FLOOR	6' - 0"	4' - 8"	
O10	UPPER FLOOR	6' - 0"	4' - 4"	
O10	UPPER FLOOR	6' - 0"	4' - 4"	
O11	UPPER FLOOR	4' - 0"	2' - 0"	
O3	UPPER FLOOR	9' - 0"	4' - 8"	
O4	UPPER FLOOR	6' - 0"	4' - 8"	
O12	UPPER FLOOR	4' - 0"	3' - 0"	
O5	UPPER FLOOR	4' - 0"	4' - 0"	
O4	UPPER FLOOR	6' - 0"	4' - 8"	
O13	UPPER FLOOR	5' - 0"	1' - 6"	
O14	UPPER FLOOR	2' - 0"	4' - 0"	
O15	UPPER FLOOR	4' - 0"	1' - 6"	

Door Schedule				
Mark	Level	Width	Height	Comments
O01	LOWER LEVEL	3' - 0"	6' - 8"	
O02	LOWER LEVEL	6' - 0"	6' - 8"	
O03	LOWER LEVEL	2' - 6"	6' - 8"	
114.1	GRADE	16' - 0"	3' - 0"	
114.2	GRADE	9' - 0"	3' - 0"	
114.3	GRADE	3' - 0"	7' - 0"	
O04	MAIN FLOOR	3' - 0"	6' - 8"	
101.1	MAIN FLOOR	3' - 0"	6' - 8"	
101.2	MAIN FLOOR	6' - 0"	6' - 8"	
102	MAIN FLOOR	3' - 0"	6' - 8"	
104	MAIN FLOOR	2' - 0"	6' - 8"	
105	MAIN FLOOR	6' - 0"	6' - 8"	
109	MAIN FLOOR	3' - 0"	6' - 8"	
110	MAIN FLOOR	2' - 0"	6' - 8"	
111	MAIN FLOOR	3' - 0"	6' - 8"	
112	MAIN FLOOR	2' - 6"	6' - 8"	
113.1	MAIN FLOOR	2' - 0"	6' - 8"	PANTRY DOOR
201	UPPER FLOOR	3' - 0"	6' - 8"	
202	UPPER FLOOR	3' - 0"	7' - 0"	
203	UPPER FLOOR	2' - 6"	6' - 8"	
204.1	UPPER FLOOR	2' - 6"	6' - 8"	
204.2	UPPER FLOOR	2' - 6"	6' - 8"	
205	UPPER FLOOR	3' - 0"	6' - 8"	
206	UPPER FLOOR	5' - 0"	7' - 0"	
208	UPPER FLOOR	3' - 0"	6' - 8"	
209	UPPER FLOOR	2' - 0"	6' - 8"	
210	UPPER FLOOR	2' - 0"	6' - 8"	
211	UPPER FLOOR	2' - 6"	6' - 8"	
212	UPPER FLOOR	2' - 0"	6' - 8"	
213	UPPER FLOOR	2' - 0"	6' - 8"	SHOWER DOOR
214	UPPER FLOOR	2' - 6"	6' - 8"	
215	UPPER FLOOR	2' - 0"	6' - 8"	
216	UPPER FLOOR	3' - 0"	6' - 8"	
217	UPPER FLOOR	3' - 0"	6' - 8"	



1
A7
BUILDING SECTION AT GARAGE STAIR
1/4" = 1'-0"

Plumbing Fixture Schedule		
Family and Type	Level	Comments
Toilet-Domestic-3D: Toilet-Domestic-3D	MAIN FLOOR	
Pedestal Sink-3D: Pedestal Sink	MAIN FLOOR	
Sink Kitchen-Double: 36" x 21"	MAIN FLOOR	
Toilet-Domestic-3D: Toilet-Domestic-3D	UPPER FLOOR	
Sink Vanity-Round: 19" x 19"	UPPER FLOOR	
Sink Vanity-Round: 19" x 19"	UPPER FLOOR	
Tub-Rectangular-3D: Tub-Rectangular-3D	UPPER FLOOR	
Toilet-Domestic-3D: Toilet-Domestic-3D	UPPER FLOOR	
Sink Vanity-Round: 19" x 19"	UPPER FLOOR	
Tub-Free Standing-3D: 30" x 60"	UPPER FLOOR	
Sink Kitchen-Double: 36" x 21"	UPPER FLOOR	
Toilet-Domestic-3D: Toilet-Domestic-3D	UPPER FLOOR	
Sink Vanity-Round: 19" x 19"	UPPER FLOOR	
Sink Vanity-Round: 19" x 19"	UPPER FLOOR	
Tub-Rectangular-3D: Tub-Rectangular-3D	UPPER FLOOR	

DATE: 7-19-07

REVISIONS:

ISSUED FOR REVIEW

7-26-07

PRINTED 7-31-07

ISSUED FOR REVIEW

8-15-07

ISSUED 8-22-07

BRUCE KNUXTON
 ARCHITECT
 530 NORTH 3RD ST. SUITE 530
 MINNEAPOLIS, MN. 55401
 PHONE 612-332-8000 FAX 612-332-7504
 WWW.KNUXTON-ARCHITECTS.COM

DATE: I HEREBY CERTIFY THAT THIS PROJECT WAS PREPARED BY ME OR UNDER MY DIRECT SUPERVISION AND THAT I AM A REGISTERED ARCHITECT IN THE STATE OF MINNESOTA.
 REGISTRATION NO.: 11789

TWIN PONDS ESTATES #1

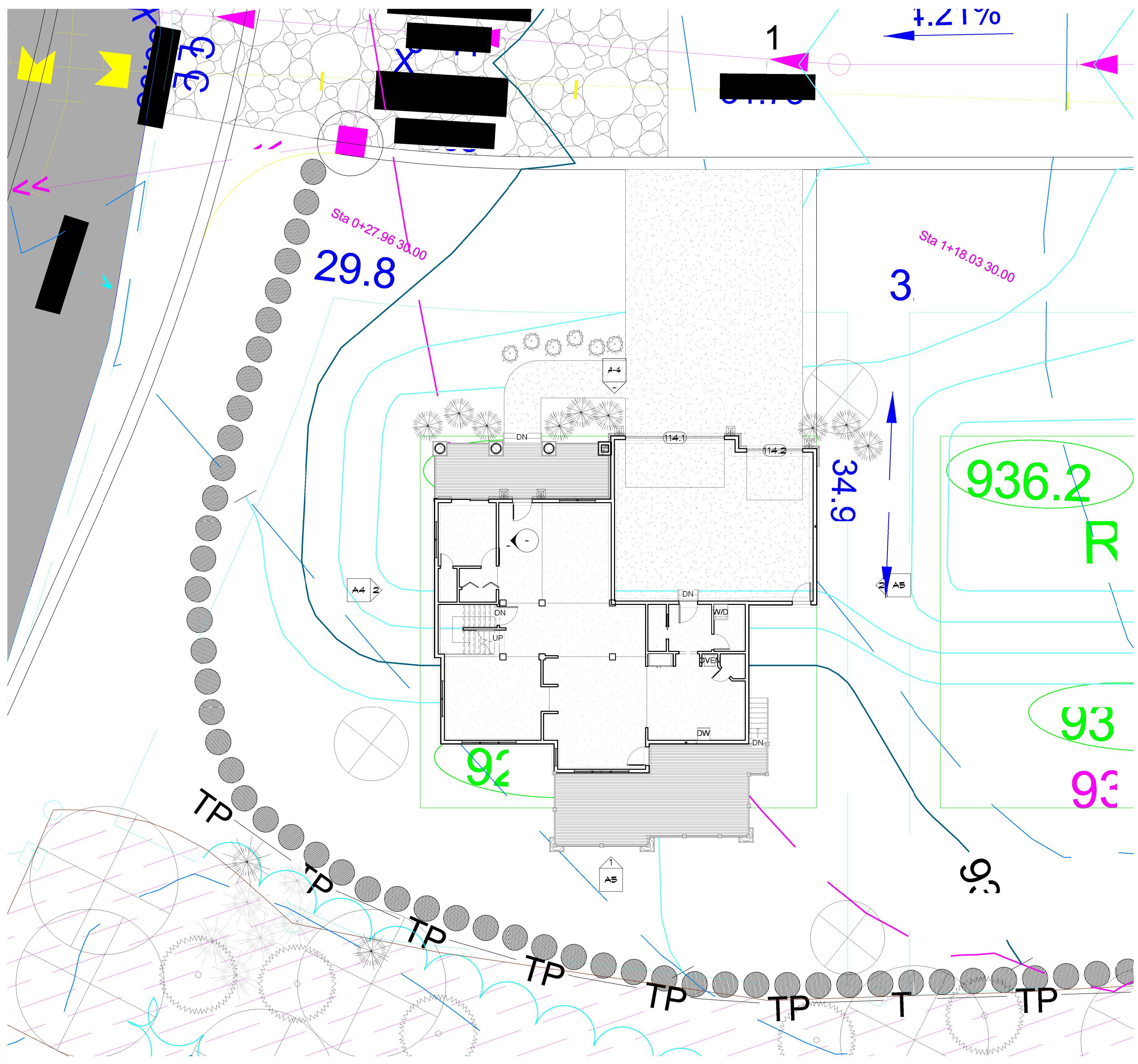
Enter address here

JOB NO: 2007-1

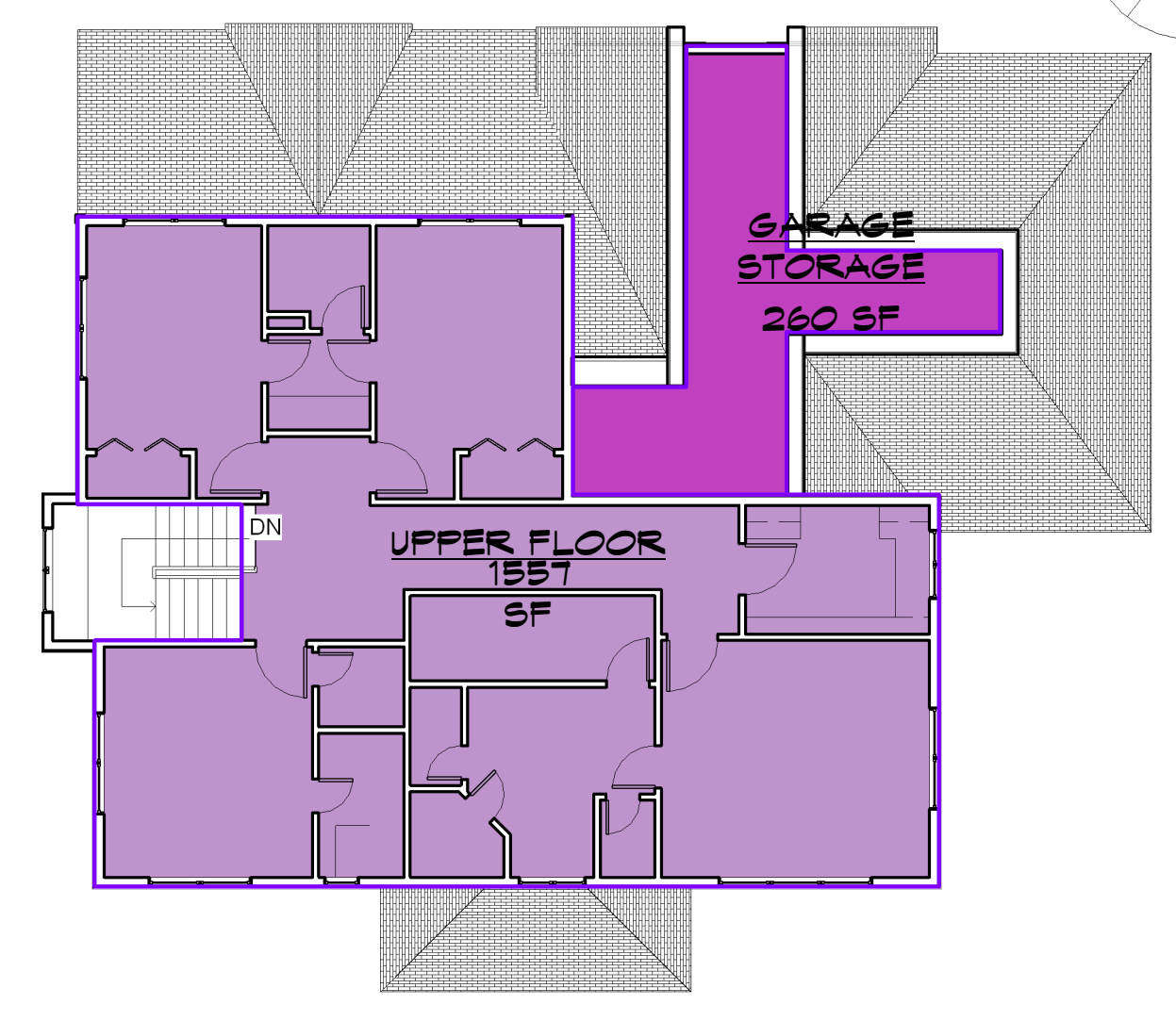
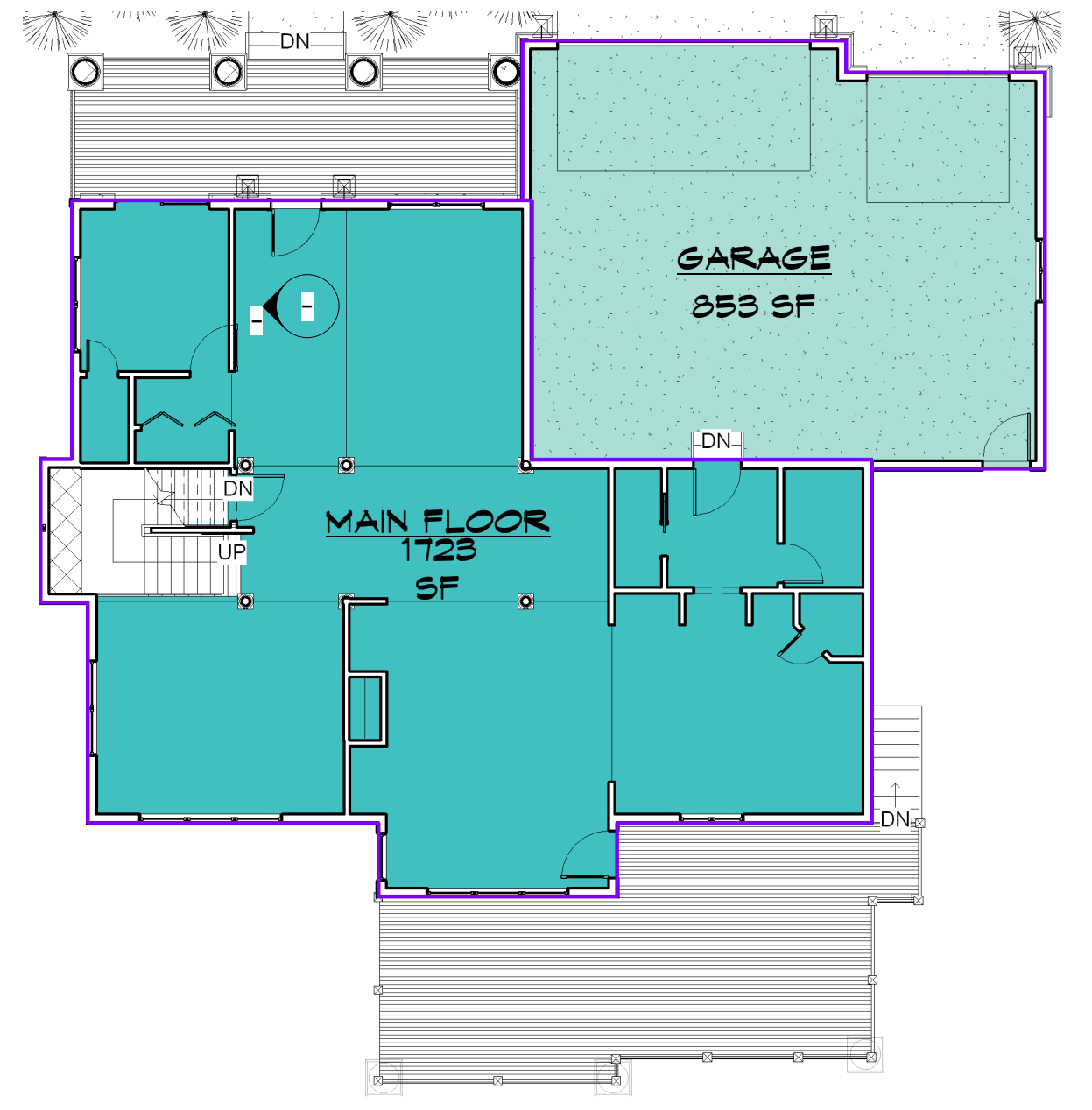
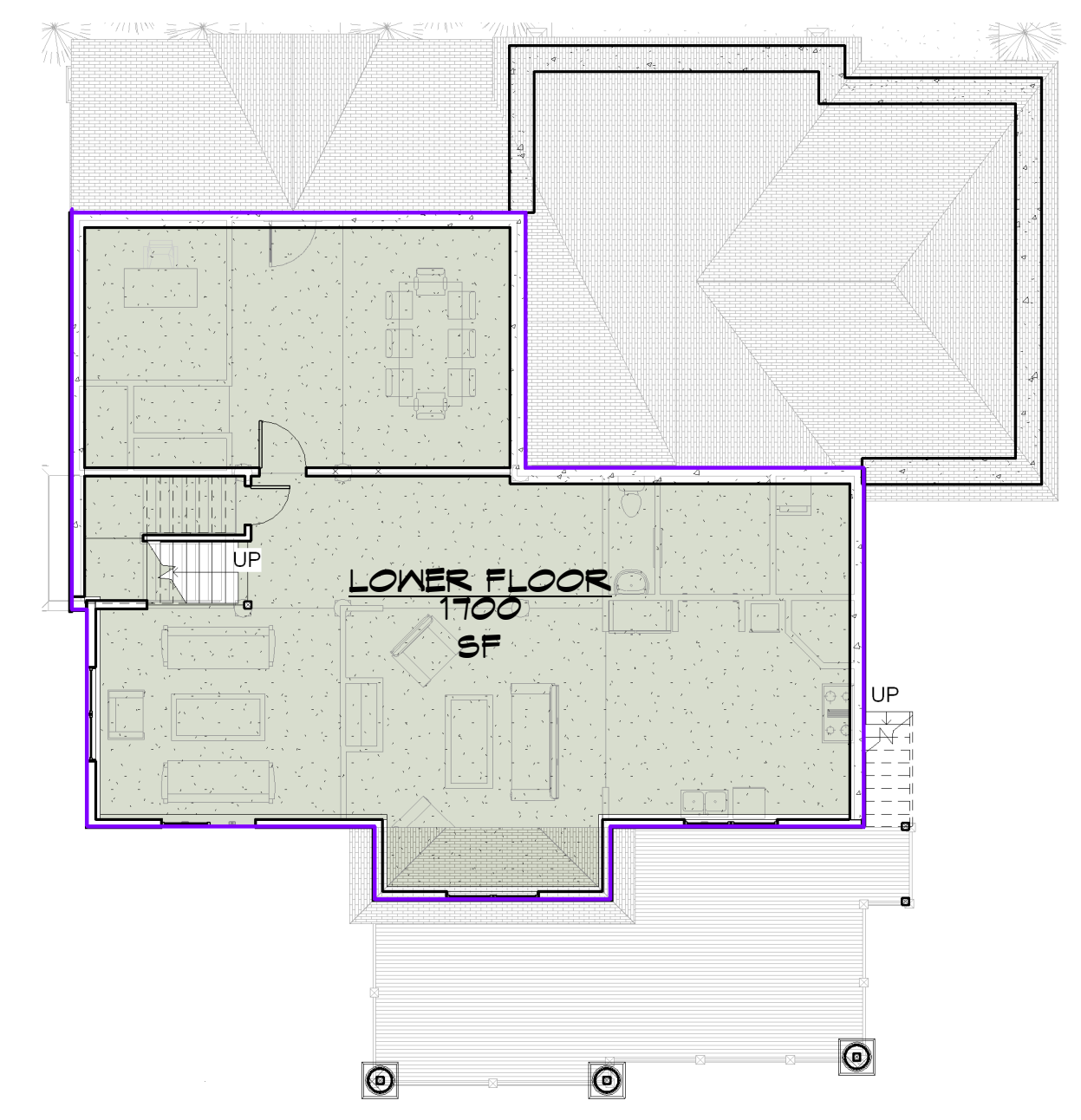
SHEET NO:

A7

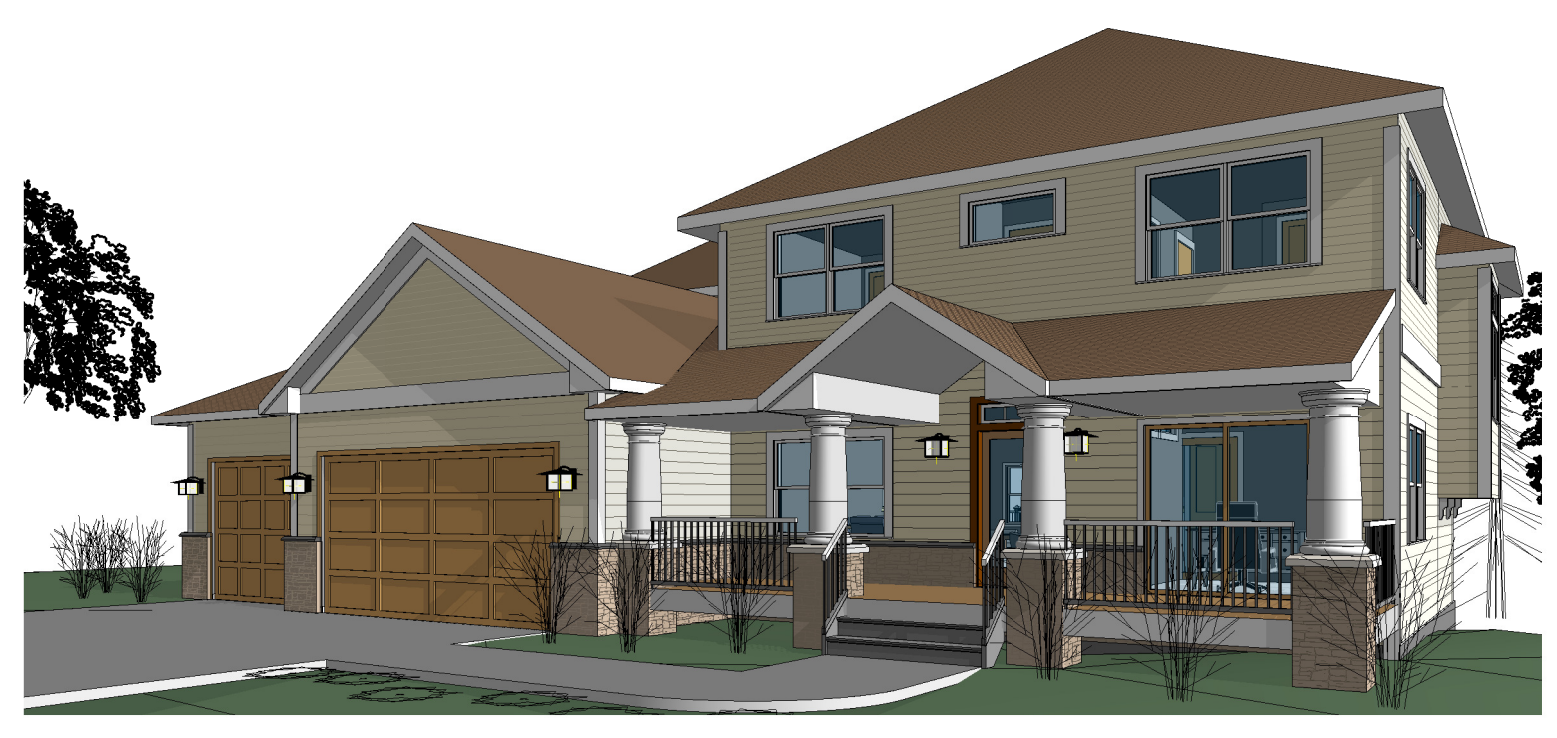
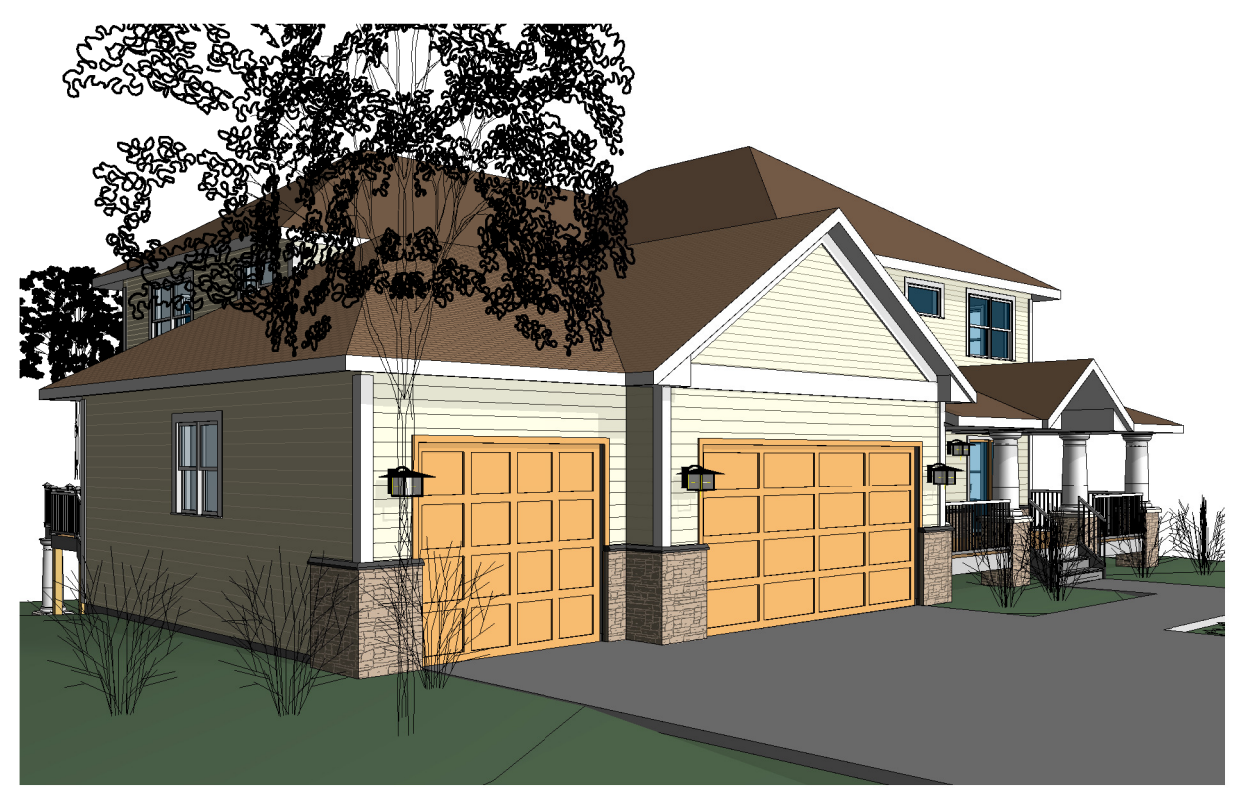
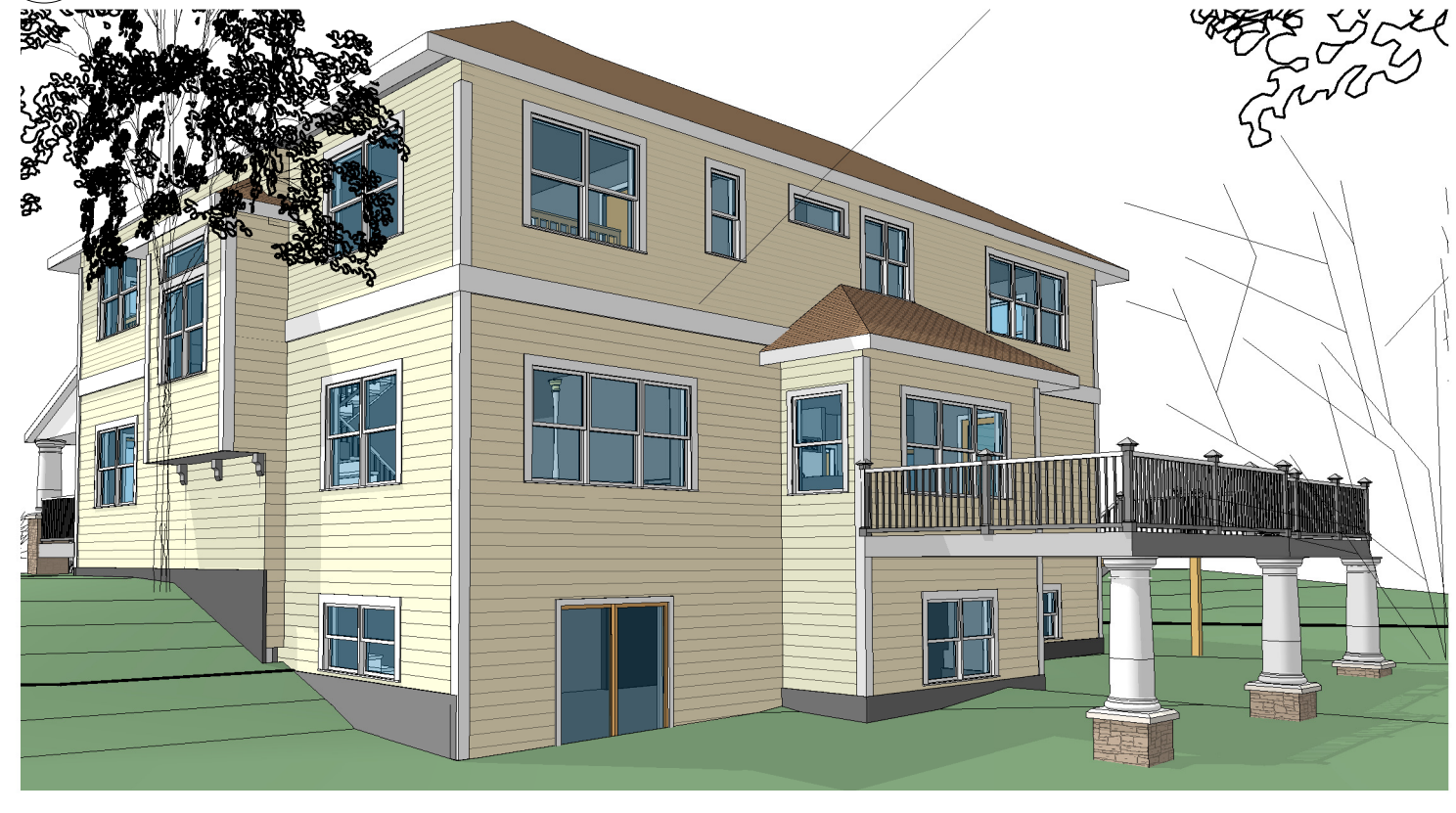
BUILDING SECTIONS AND DETAILS



Drawing List	
Sheet #	Sheet Name
A	TITLE PAGE
A1	LOWER FLOOR PLAN
A2	MAIN FLOOR PLAN
A3	UPPER FLOOR PLAN
A4	ELEVATIONS
A5	ELEVATIONS
A6	BUILDING SECTIONS
A7	BUILDING SECTIONS AND DETAILS



1 GRADE
A 1" = 10'-0"



DATE: 7-19-07
 REVISIONS:
 ISSUED FOR REVIEW 7-26-07
 PRINTED 7-31-07
 ISSUED FOR REVIEW 8-15-07
 ISSUED 8-22-07

BRUCE Knutson
 ARCHITECT
 530 NORTH 3RD ST. SUITE 530
 MINNEAPOLIS, MN. 55401
 PHONE 612-332-8000 FAX 612-332-7504
 WWW.KNUTSON-ARCHITECTS.COM

I HEREBY CERTIFY THAT THIS PROJECT WAS PREPARED BY ME OR UNDER MY DIRECT SUPERVISION AND THAT I AM A REGISTERED ARCHITECT IN THE STATE OF MINNESOTA.
 REGISTRATION NO.: 11789

TWIN PONDS ESTATES #1
 Enter address here

JOB NO: 2007-1

SHEET NO:

A

TITLE PAGE

7/27/2008 4:06:52 PM