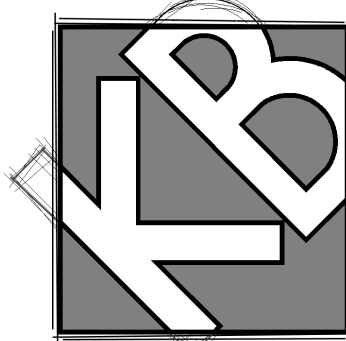


DATE: 8/12/04

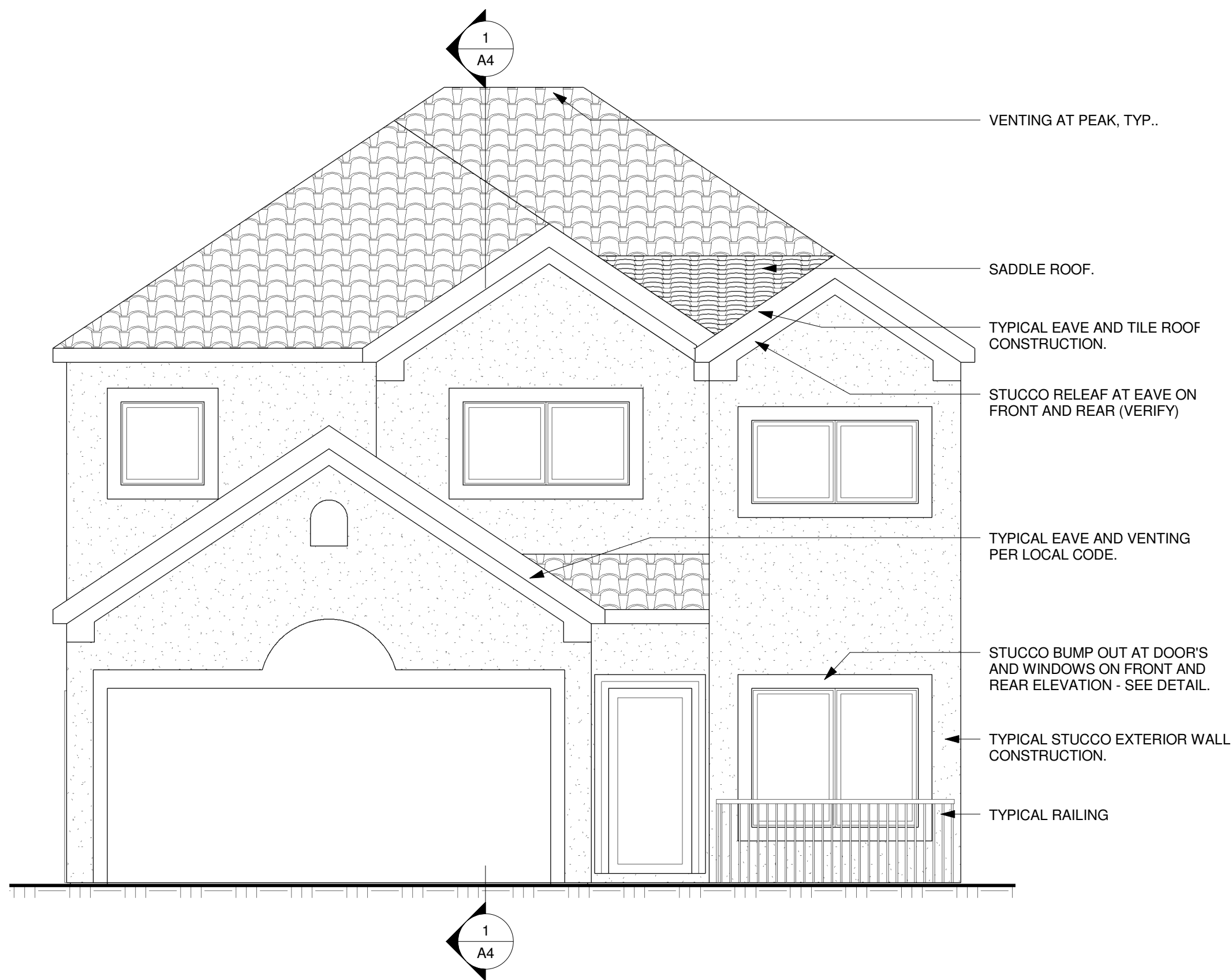
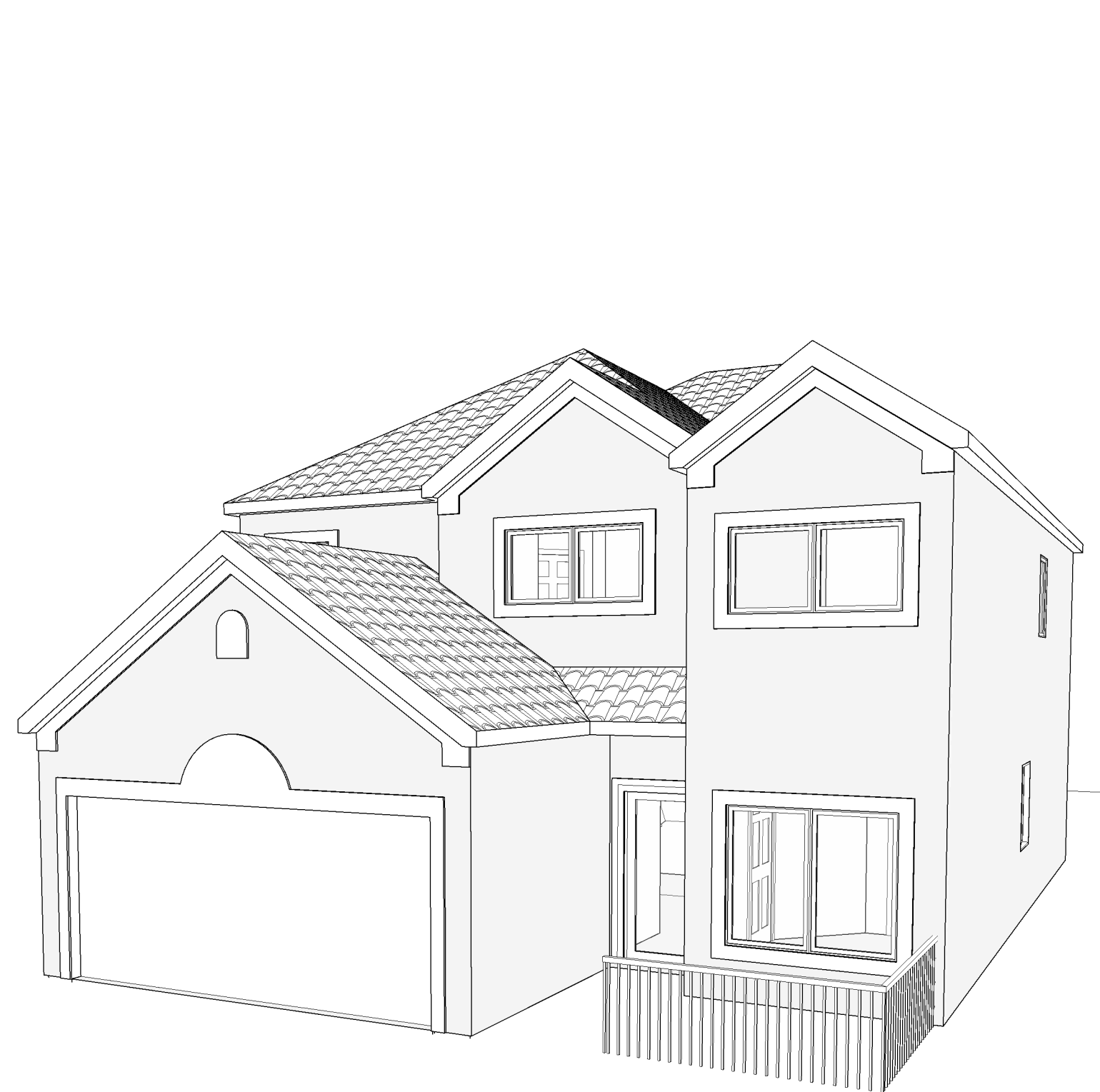
REVISIONS:

ISSUED 12-8-04



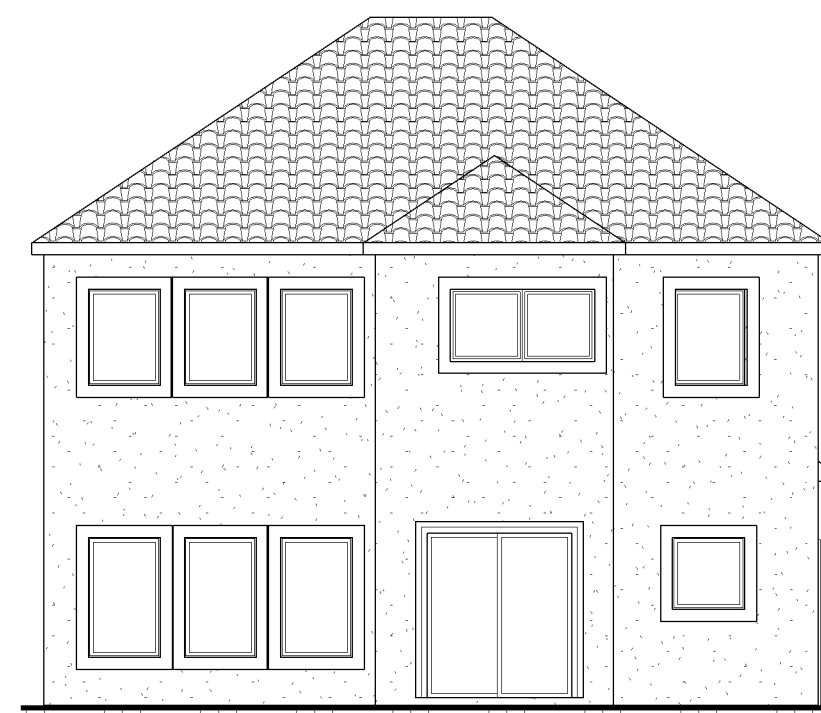
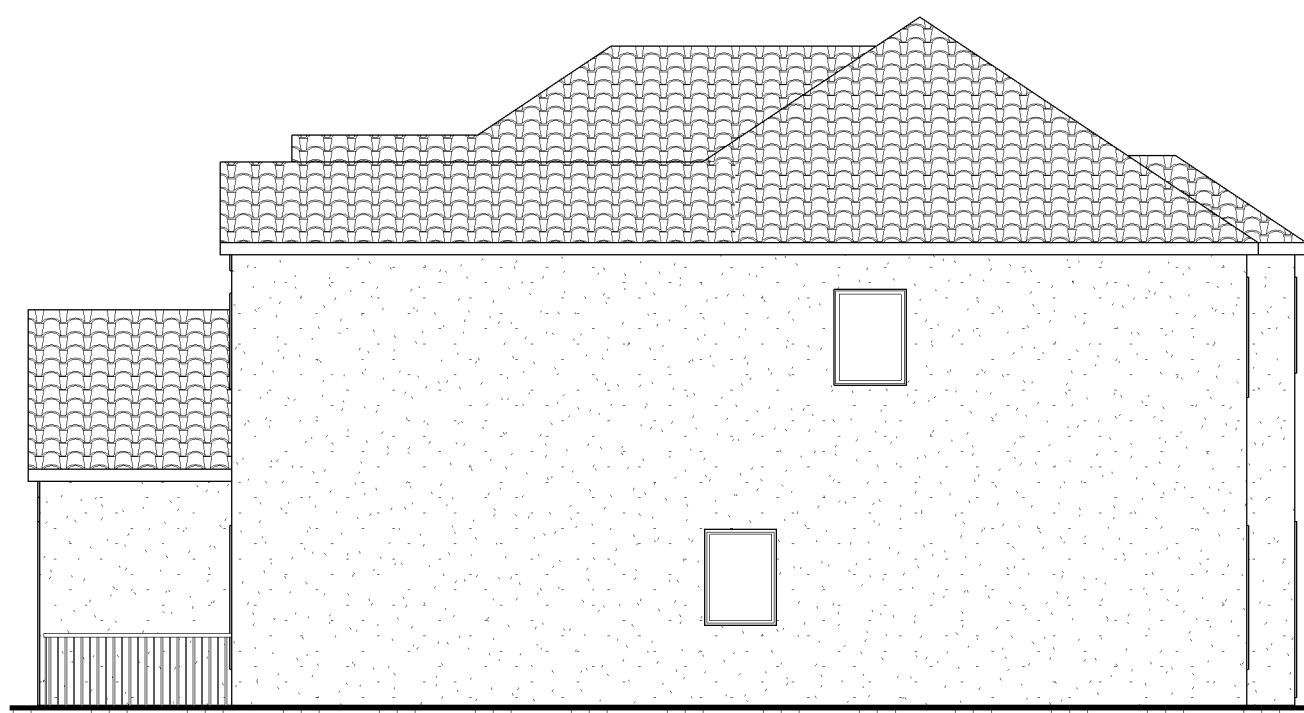
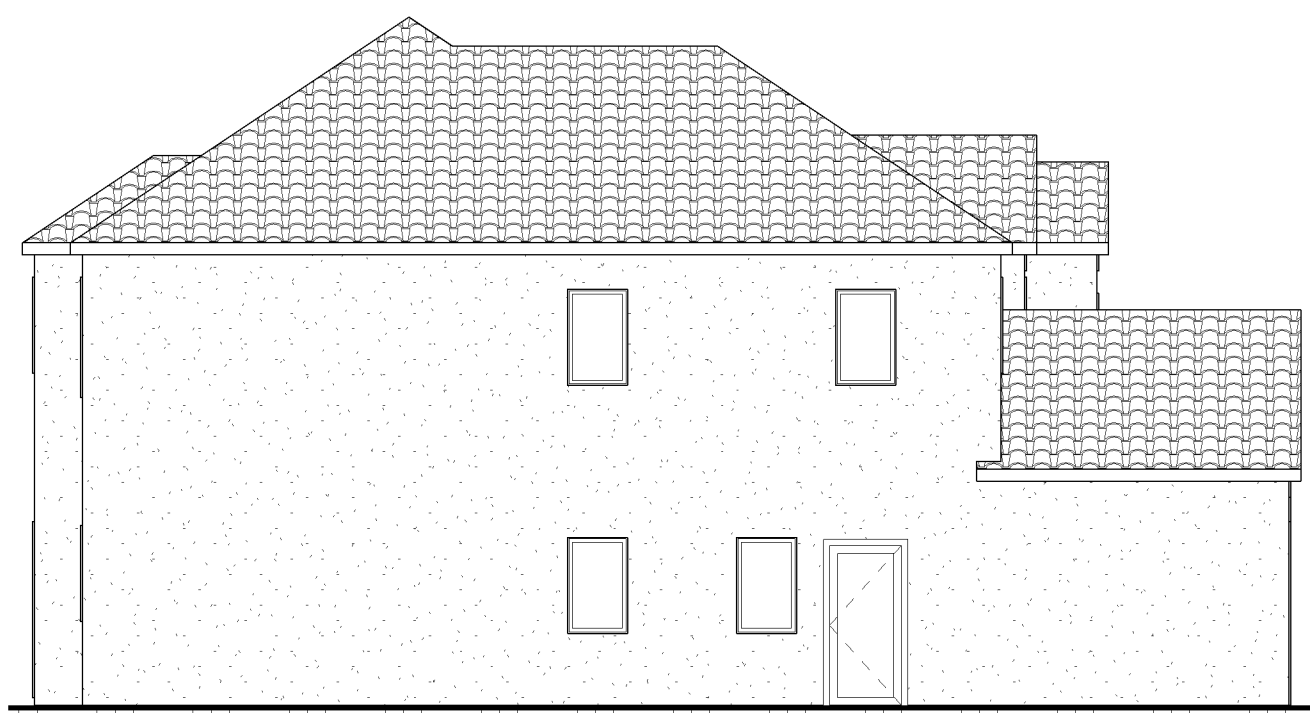
DESIGNS

530 NORTH 3RD ST.
SUITE 530
MINNEAPOLIS, MN. 55401
PHONE 612-332-8000 X25
FAX: 612-332-7504
CELL: 612-251-1041



5 PERSPECTIVE

1 FRONT ELEVATION
1/4" = 1'-0"



4 LEFT ELEVATION
1/8" = 1'-0"

3 RIGHT ELEVATION
1/8" = 1'-0"

2 REAR ELEVATION
1/8" = 1'-0"

Alison Typical Details

WILLIAM JAMES CONSTRUCTION, LLC
DBA HERITAGE BUILDERS

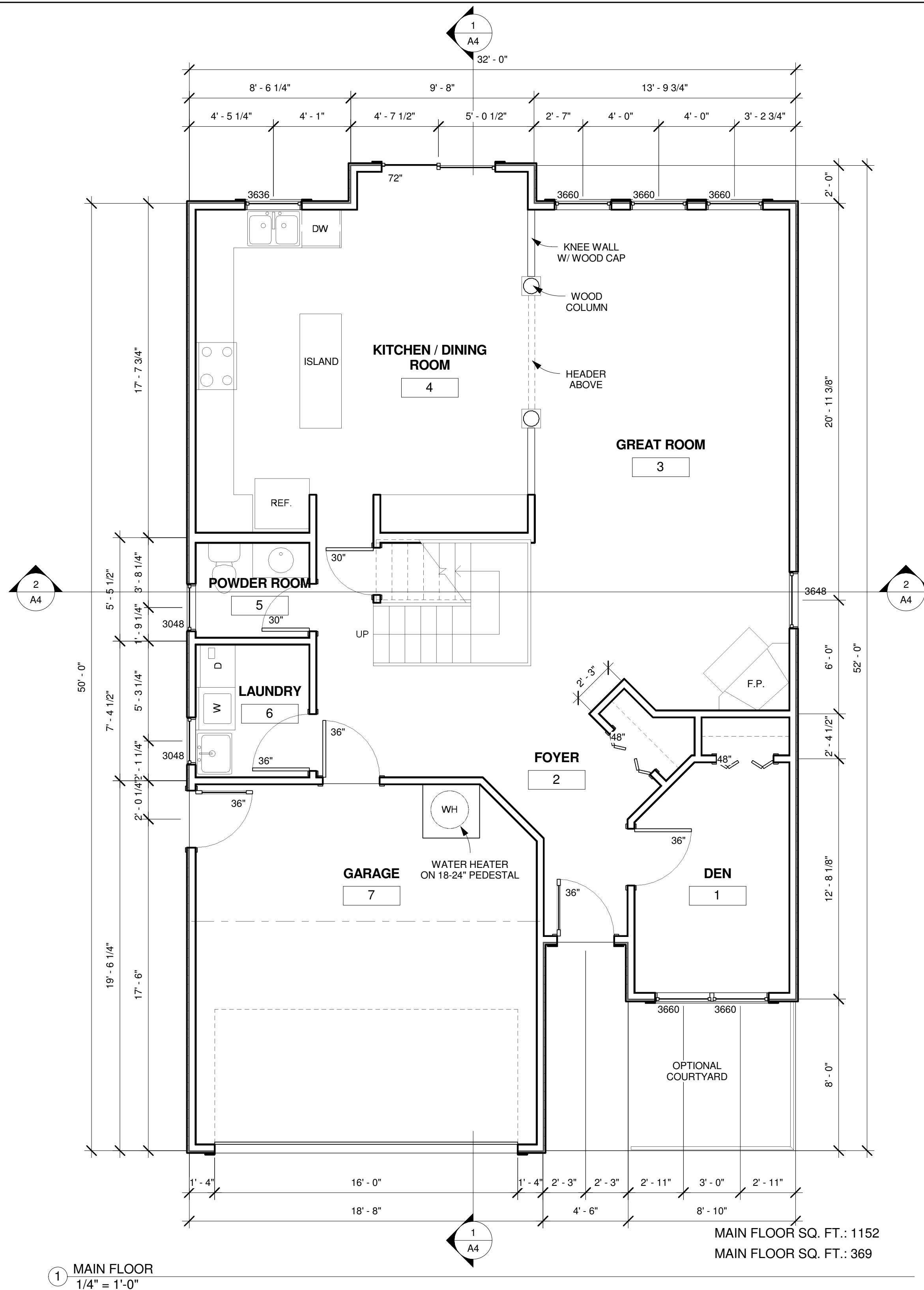
JOB NO: A-A

SHEET NO:

A1

ELEVATIONS

11/16/2008 11:36:23 AM



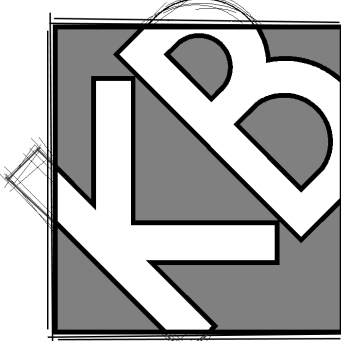
MAIN FLOOR SQ. FT.: 1152
MAIN FLOOR SQ. FT.: 369

1 MAIN FLOOR
1/4" = 1'-0"

DATE: 8/12/04

REVISIONS:

ISSUED 12-8-04



DESIGNS

530 NORTH 3RD ST.
SUITE 530
MINNEAPOLIS, MN. 55401
PHONE 612-332-8000 X25
FAX: 612-332-7504
CELL: 612-251-1041

Alison Typical Details

WILLIAM JAMES CONSTRUCTION, LLC
DBA HERITAGE BUILDERS

JOB NO: A-A

SHEET NO:

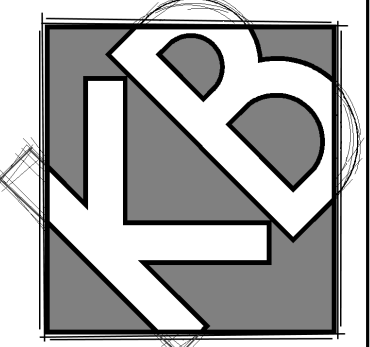
A2

MAIN PLAN

DATE: 8/12/04

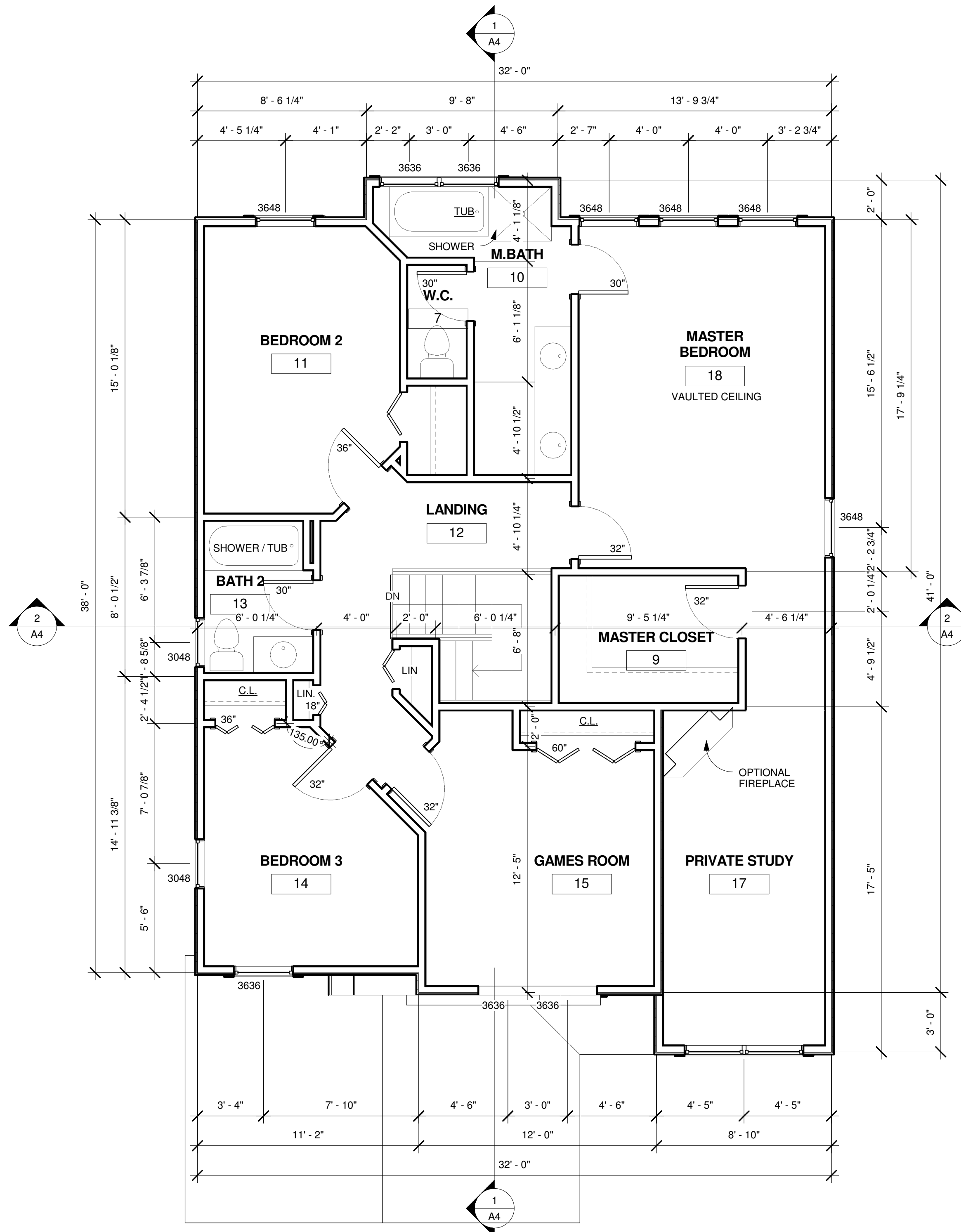
REVISIONS:

ISSUED 12-8-04



DESIGNS

530 NORTH 3RD ST.
SUITE 530
MINNEAPOLIS, MN. 55401
PHONE 612-332-8000 X25
FAX: 612-332-7504
CELL: 612-251-1041



UPPER FLOOR SQ.FT. 1302

1 UPPER FLOOR
1/4" = 1'-0"

11/16/2008 11:36:24 AM

Alison Typical Details

WILLIAM JAMES CONSTRUCTION,LLC
DBA HERITAGE BUILDERS

JOB NO: A-A

SHEET NO:

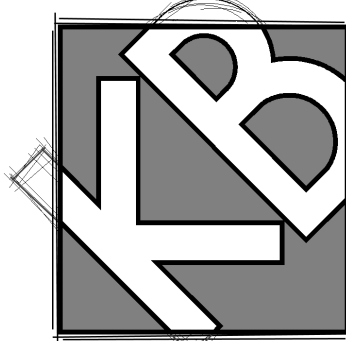
A3

UPPER PLAN

DATE: 8/12/04

REVISIONS:

ISSUED 12-8-04



DESIGNS

530 NORTH 3RD ST.
SUITE 530
MINNEAPOLIS, MN. 55401
PHONE 612-332-8000 X25
FAX: 612-332-7504
CELL: 612-251-1041

Alison Typical Details

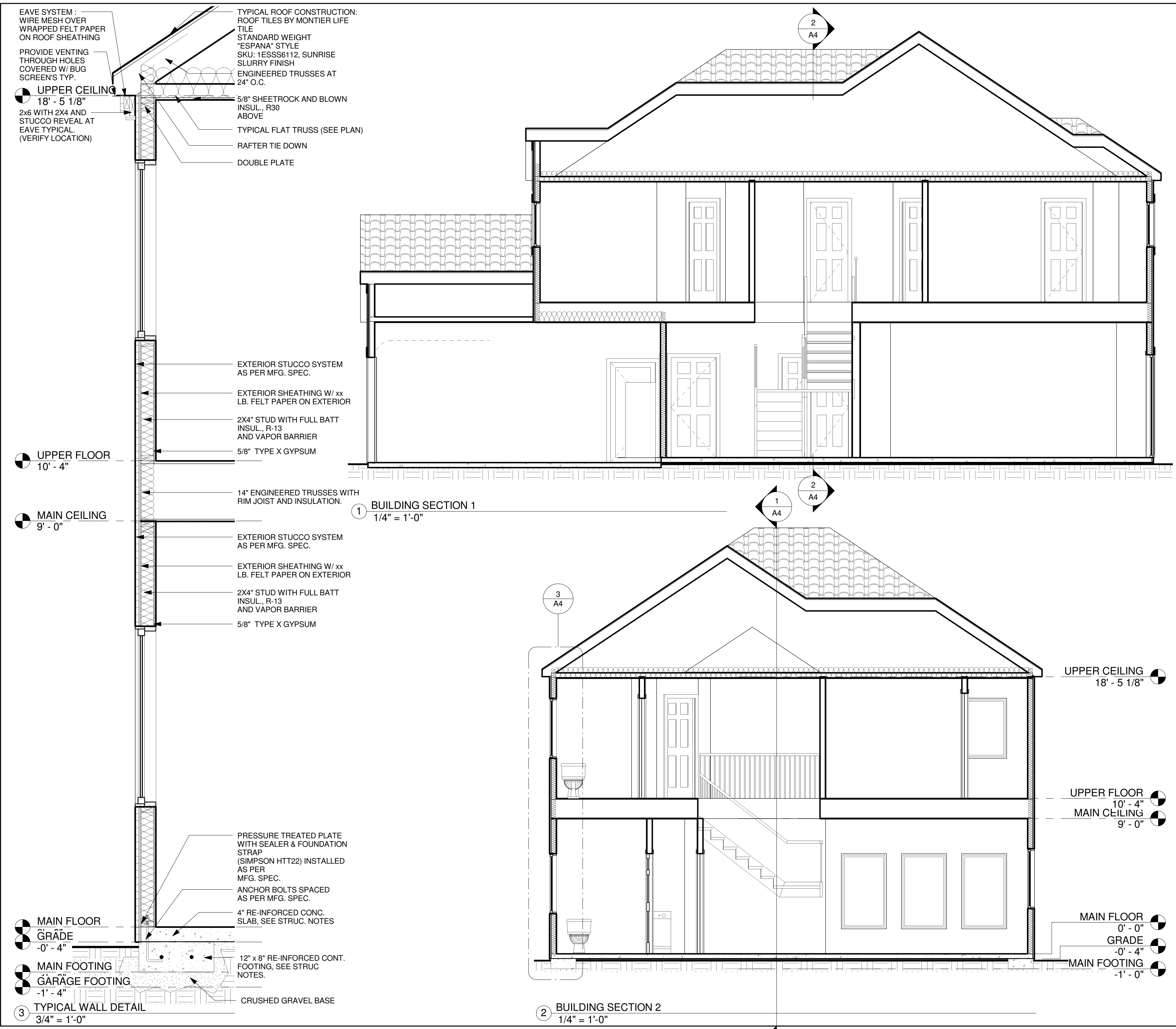
WILLIAM JAMES CONSTRUCTION, LLC
DBA HERITAGE BUILDERS

JOB NO: A-A

SHEET NO:

A4

BUILDING SECTION



11/16/2008 11:36:26 AM