

DESIGNS

9995 WEST 69TH ST.
SUITE 102
EDEN PRAIRIE, MN. 55334
PHONE: 952-826-2222
FAX: 952-941-6515

ELIZABETH STANDARD

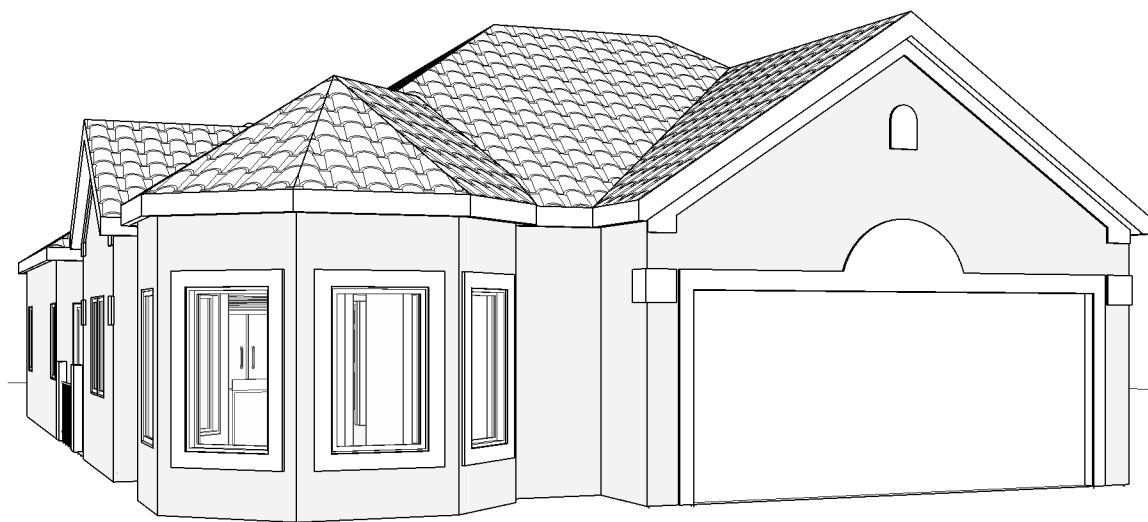
WILLIAM JAMES CONSTRUCTION, LLC.
DBA HERITAGE BUILDERS

JOB NO: 2004

SHEET NO:

A1

ELEVATIONS



5 PERSPECTIVE

TYPICAL EAVE AND TILE ROOF CONSTRUCTION.

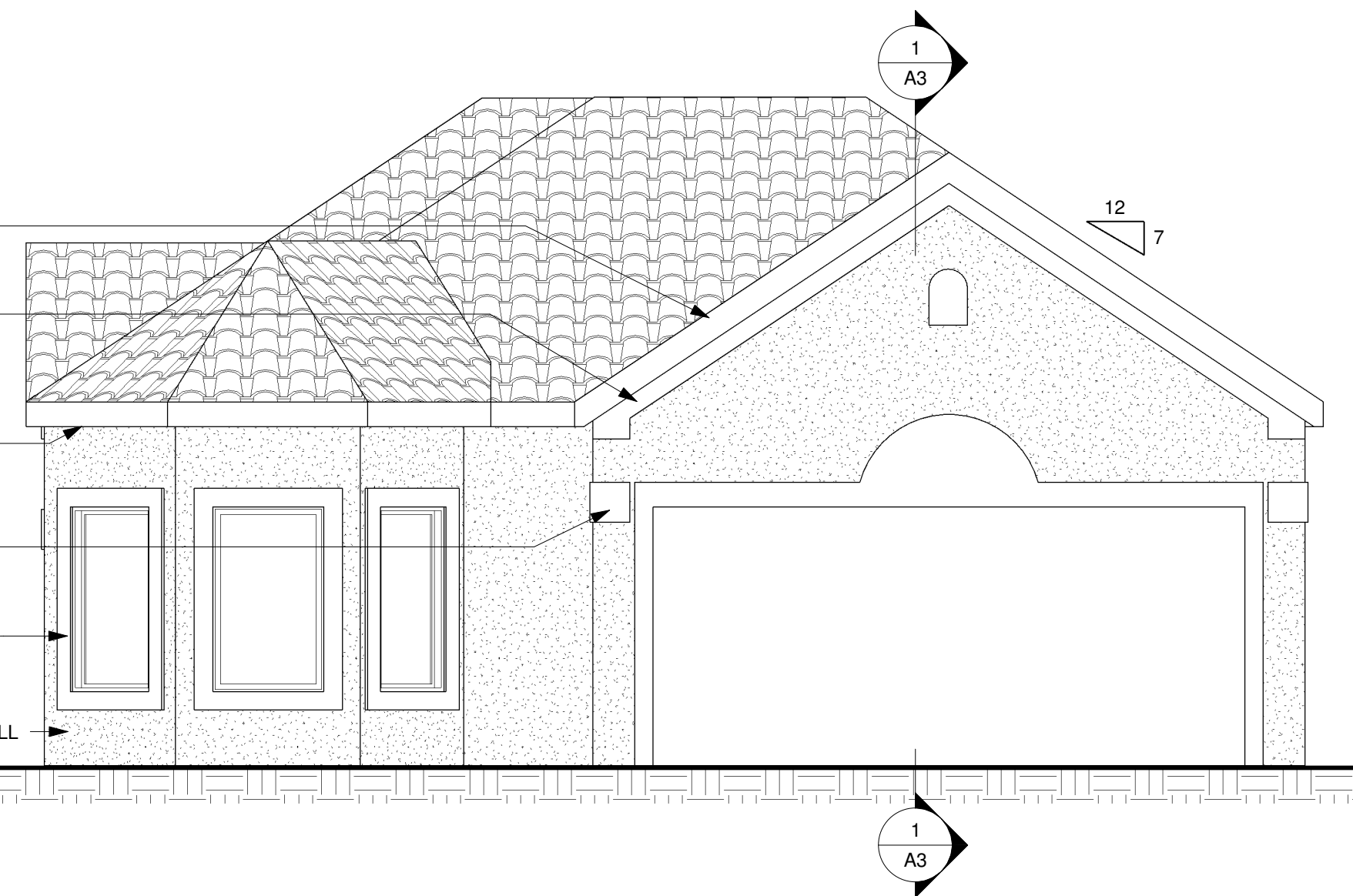
STUCCO RELIEF AT EAVE ON FRONT AND REAR (VERIFY)

TYPICAL EAVE AND VENTING PER LOCAL CODE.

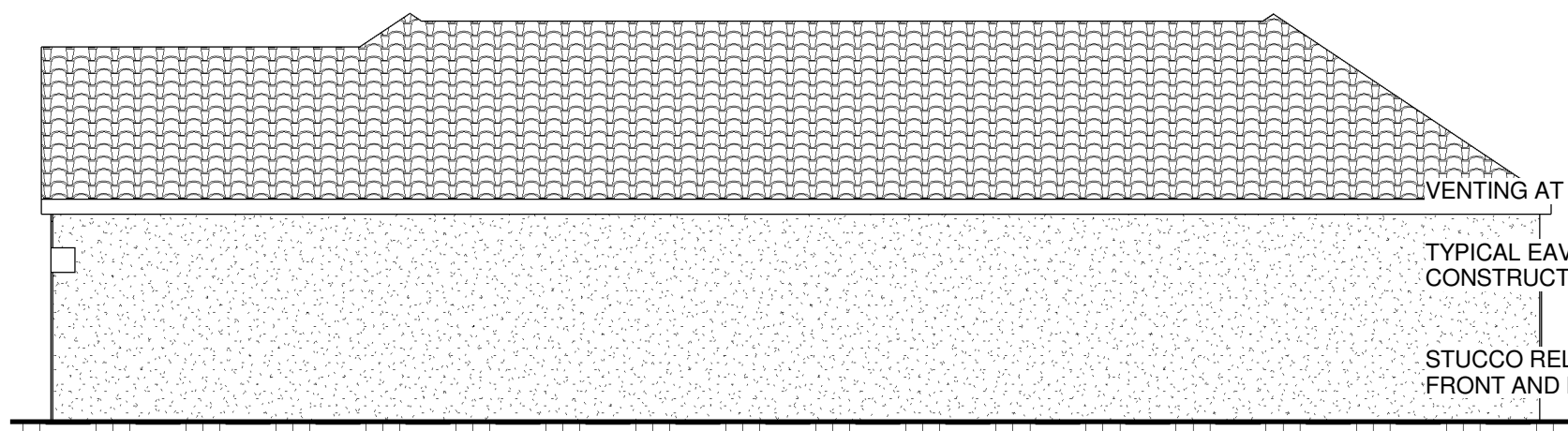
STUCCO KEY AT FRONT ELEV MATCH WINDOW DETAIL.

STUCCO BUMP OUT AT DOOR'S AND WINDOWS ON FRONT AND REAR ELEVATION - SEE DETAIL.

TYPICAL STUCCO EXTERIOR WALL CONSTRUCTION.



1 FRONT ELEVATION
1/4" = 1'-0"



4 RIGHT ELEVATION
1/8" = 1'-0"

VENTING AT PEAK, TYP..

TYPICAL EAVE AND TILE ROOF CONSTRUCTION.

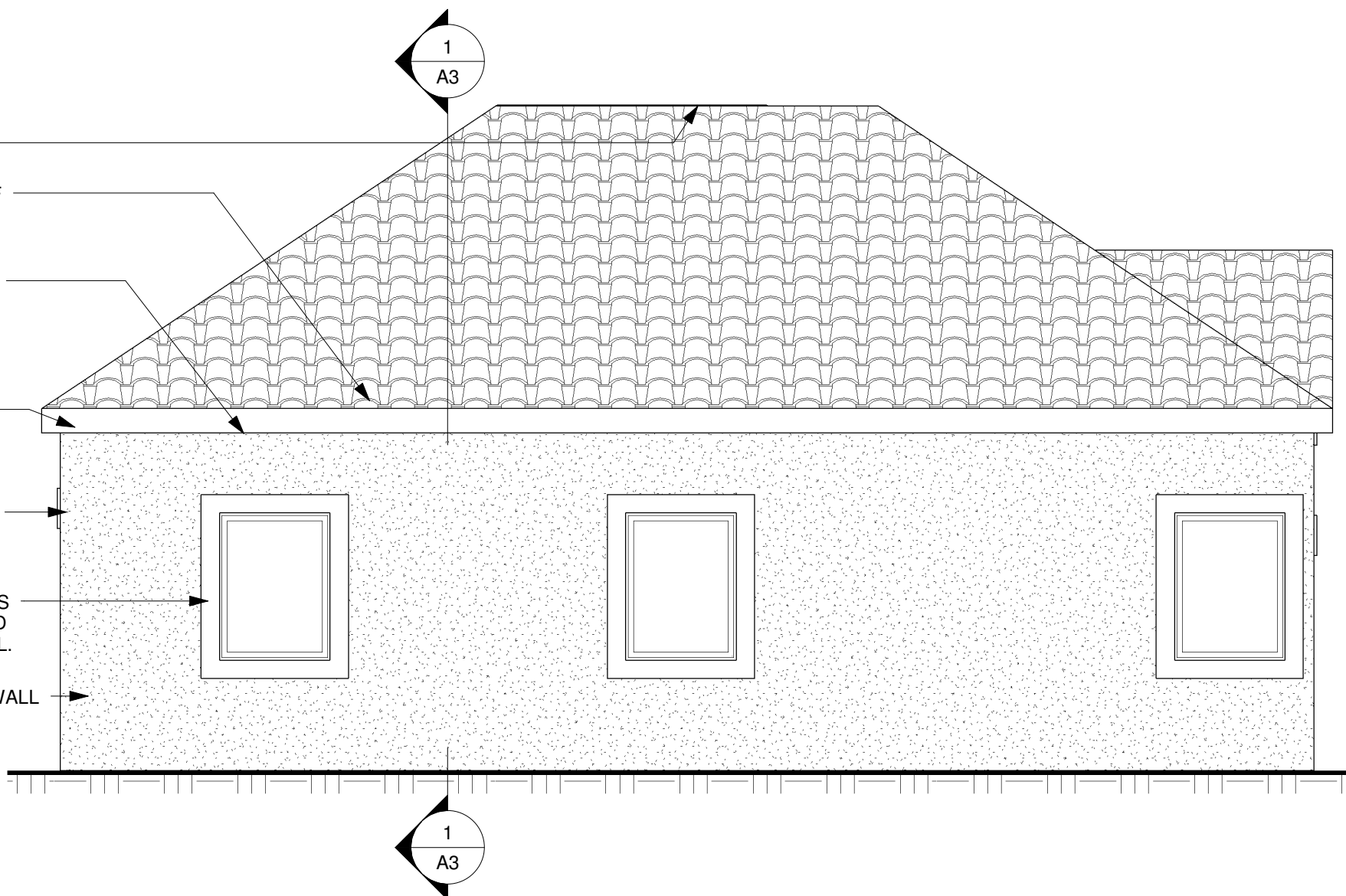
STUCCO RELIEF AT EAVE ON FRONT AND REAR (VERIFY)

TYPICAL EAVE AND VENTING PER LOCAL CODE.

STUCCO KEY AT FRONT ELEV MATCH WINDOW DETAIL.

STUCCO BUMP OUT AT DOOR'S AND WINDOWS ON FRONT AND REAR ELEVATION - SEE DETAIL.

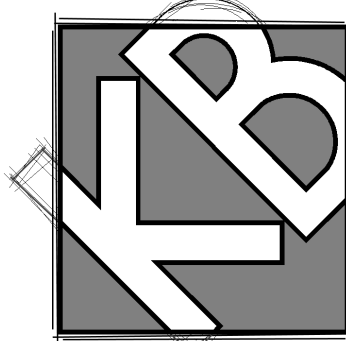
TYPICAL STUCCO EXTERIOR WALL CONSTRUCTION.



2 REAR ELEVATION
1/4" = 1'-0"



3 LEFT ELEVATION
1/8" = 1'-0"



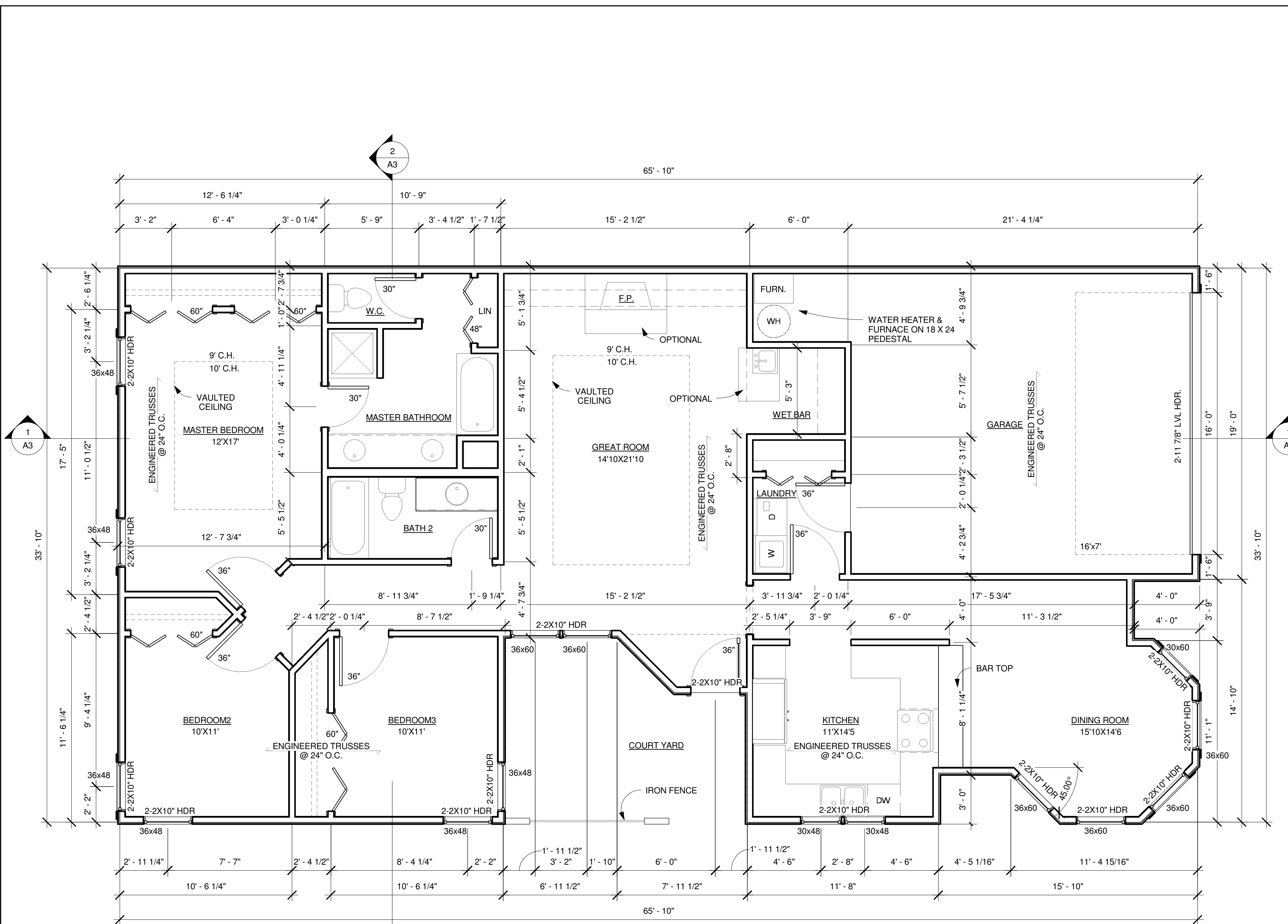
DESIGNS

9995 WEST 69TH ST.
SUITE 102
EDEN PRAIRIE, MN. 55334
PHONE: 952-826-2222
FAX: 952-941-6515

ELIZABETH STANDARD

WILLIAM JAMES CONSTRUCTION, LLC.
DBA HERITAGE BUILDERS

A2



MAIN FLOOR SQ.FT.: 1635

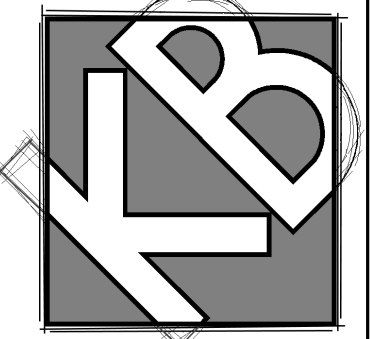
GARAGE SQ.FT.: 435

1 MAIN FLOOR
1/4" = 1'-0"

DATE: 7-19-04

REVISIONS:

ISSUED 12-8-04



DESIGNS

9995 WEST 69TH ST.
SUITE 102
EDEN PRAIRIE, MN. 55334
PHONE: 952-826-2222
FAX: 952-941-6515

ELIZABETH STANDARD

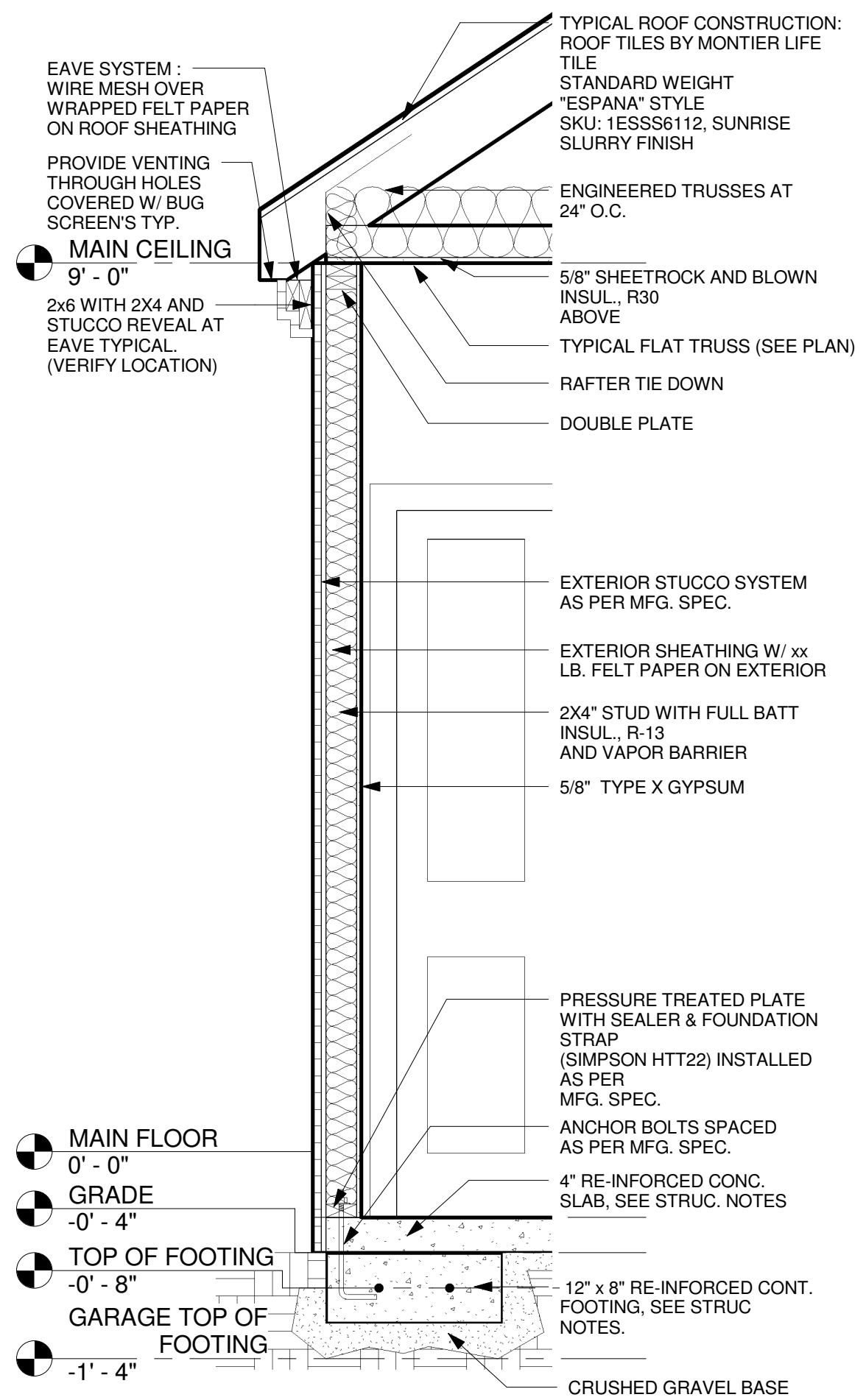
WILLIAM JAMES CONSTRUCTION, LLC.
DBA HERITAGE BUILDERS

JOB NO: 2004

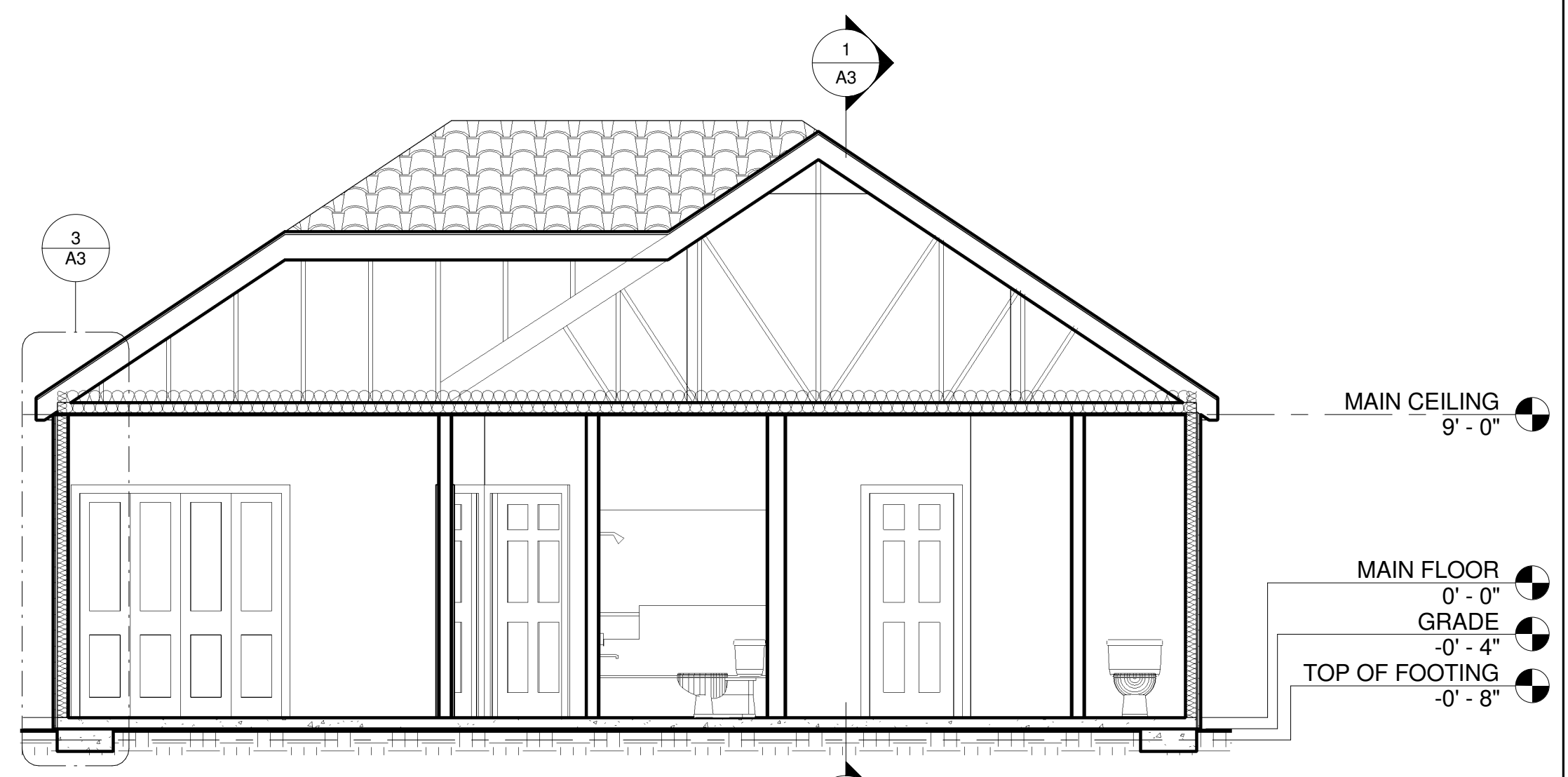
SHEET NO:

A3

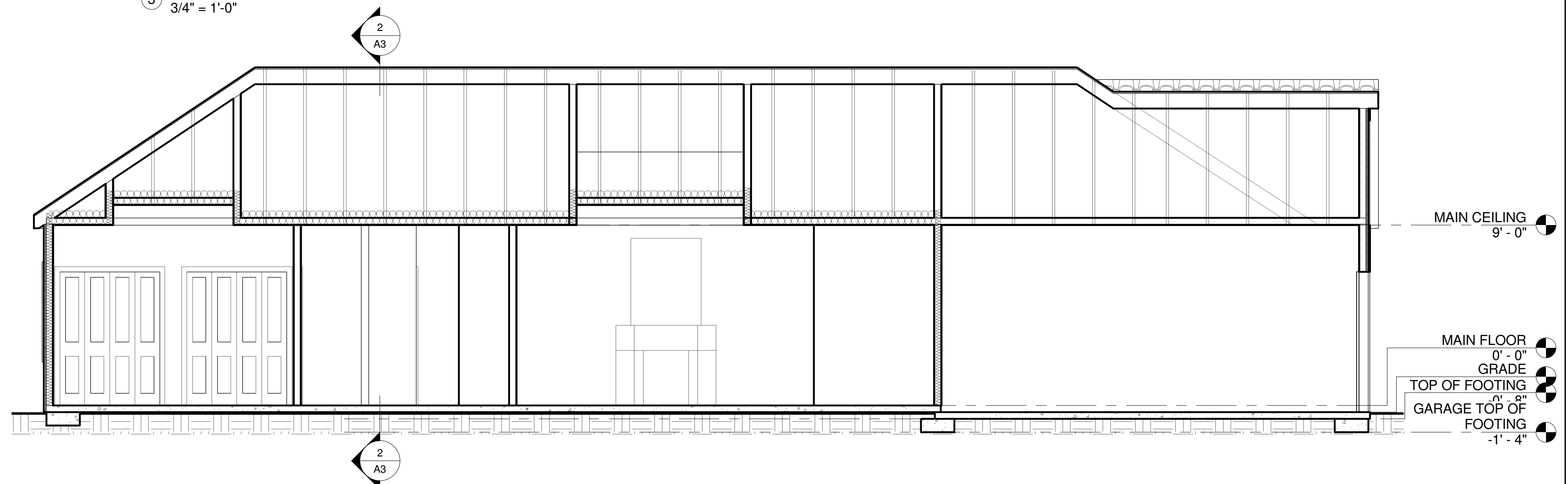
SECTIONS



3 TYPICAL WALL SECTION
3/4" = 1'-0"



2 BUILDING SECTION 2
1/4" = 1'-0"



1 BUILDING SECTION 1
1/4" = 1'-0"

11/16/2008 6:43:59 PM